



COMMUNITY HERITAGE COMMISSION

NOTICE OF OPEN MEETING

DATE: THURSDAY, 2017 SEPTEMBER 07

TIME: 6:00 PM

PLACE: Council Committee Room, Burnaby City Hall

A G E N D A

1.	<u>CALL TO ORDER</u>	<u>PAGE</u>
2.	<u>MINUTES</u>	
a)	Minutes of the Community Heritage Commission Open meeting held on 2017 June 08	1
3.	<u>PRESENTATION</u>	
a)	Demo on Accessing Council Records on Heritage Burnaby <u>Presenters:</u> Alix Nay and Edith Chan, Archives	
4.	<u>CORRESPONDENCE</u>	
a)	Memorandum from the City Archivist Re: City of Burnaby Archives - Update	6
5.	<u>REPORTS</u>	
a)	Report from the Director Planning and Building Re: Remembering Working People: "Plaques Around the Province" Project	7
b)	Report from the Director Planning and Building Re: "Burnaby Then and Now" Celebrating Burnaby 125 with Heritage Markers	13
c)	Report from the Director Planning and Building Re: New Kapoor Singh Siddoo "Stop of Interest" Sign	18

6. **NEW BUSINESS**
7. **INQUIRIES**
8. **ADJOURNMENT**



COMMUNITY HERITAGE COMMISSION

MINUTES

An Open meeting of the Community Heritage Commission was held in the Council Committee Room, City Hall, 4949 Canada Way, Burnaby, B.C. on Thursday, **2017 June 08** at 6:00 p.m.

1. CALL TO ORDER

PRESENT: Councillor Colleen Jordan, Chair
 Councillor Sav Dhaliwal, Vice Chair
 Ms. Ruby Johnson, Honorary Member Emeritus
 Ms. Les Lee Lowe, Burnaby Historical Society Representative
 Mr. Lance Matricardi, Parks, Recreation and Culture Commission Representative
 Ms. Diane Gillis, Citizen Representative
 Ms. Tammy Marchioni, Citizen Representative
 Ms. Coni O'Neill, Citizen Representative
 Mr. Harry Pride, Historian

ABSENT: Councillor Nick Volkow, Member *(due to illness)*
 Ms. Maurya Biswell, Citizen Representative *(resigned)*

STAFF: Mr. Jim Wolf, Senior Long Range Planner
 Ms. Helen Lee, Long Range Planner
 Ms. Deborah Tuytens, Museum Services Supervisor
 Ms. Blanka Zeinabova, Administrative Officer

The Chair called the Open meeting to order at 6:04 p.m.

2. MINUTES

a) Minutes of the Community Heritage Commission Open meeting held on 2017 April 06

MOVED BY COMMISSIONER O'NEILL
SECONDED BY COMMISSIONER GILLIS

THAT the minutes of the Community Heritage Commission Open meeting held on 2017 April 06 be adopted.

CARRIED UNANIMOUSLY

3. CORRESPONDENCE

MOVED BY COMMISSIONER LOWE
SECONDED BY COMMISSIONER PRIDE

THAT the correspondence be received.

CARRIED UNANIMOUSLY

a) Memorandum from the City Archivist
Re: City of Burnaby Archives - Update (2017 May)

A memorandum was received from Ms. Rebecca Pasch, City Archivist, providing an update on work at the City Archives. The update included the following:

- work began on Heritage Burnaby website update to include the 1892-1969 Council records;
- steps are being taken to preserve digital records in the Archives holdings through partnership with the Information Technology Department.

Councillor Jordan advised that together with the Deputy City Clerk and the City Archivist they visited the Richmond Archives, as well as North Vancouver and New Westminster Archives. It was noted that Burnaby is the only city that has all Council minutes available electronically.

4. NEW BUSINESS

a) Staff Verbal Updates & Presentations

Deborah Tuytens, Museum Services Supervisor

Ms. Tuytens provided a brief update on work at the Burnaby Village Museum:

- for Burnaby 125 celebrations, the Museum hired a researcher to work on plaques project (Chinese-Canadian and Japanese-Canadian history);
- great entertainment is planned for Canada Day celebrations and 10,000 visitors are expected to visit the Museum over the long weekend;
- summer programs include First Nations history and demonstrations;
- car rides and laundry days are popular programs;
- work continues on pharmacy research - so far 600 objects have been catalogued.

Helen Lee, Long Range Planner

Ms. Lee provided an update on the Japanese-Canadian Historic Places status, where there were 264 nominations, and 56 places were recognized by the

Province, including two places in Burnaby – Nikkei National Museum & Cultural Centre and Protected Area (160 miles of coast land). These two sites will be included on the BC Register of Historic Places as well as the Canadian Register, the interactive map, and plaques will be installed to bring awareness to these places.

The speaker provided further update on the Labour History program. Staff is finalizing text for the plaques, and will report to the Commission in September.

Staff submitted three nominations for the Stop of Interest program, and Kapoor Saw Mill was selected by the Province. Staff will report back in September, and a dedication ceremony will be held later in the fall.

Jim Wolf, Senior Long Range Planner

Mr. Wolf provided an update on the School Book History project noting that staff met with the Book Committee and will be receiving their submissions, organizing the documents, and a sample book chapter will be presented to the Commission for approval.

Mr. Pride advised that extra documentation, not included in the book, will be bonded and stored in the Library or the Archives.

Staff undertook to follow up with Mr. Pride regarding the bonding and storage in the Archives.

Presentation - Heritage Interpretive Plaque Program - 2017

Mr. Wolf provided a PowerPoint presentation on the Heritage Interpretive Plaque Program – 2017, Burnaby 125 – Burnaby Then & Now Project.

The speaker outlined the history of the plaque program from the initiation in 1988 to 2015.

The 2017 project was approved by Council to celebrate and mark Burnaby's 125th anniversary with a new and expanded Heritage Marker Program. Council approved \$60,000 and the BC/Canada 150 project provided an additional \$57,000. The project will be launched with a research program in partnership with the Burnaby Village Museum. It represents a new opportunity to renew and substantially add to the City's interpretive plaque program and history knowledge.

Two other projects related to heritage interpretation in 2017 are:

- Labour History Centre – plaques to mark the 1921 Strike at Barnet Mill and the 1909 Japanese Train disaster at Lost Creek at the Brunette River;

- Provincial Stop of Interest Program – Kapoor Singh Siddoo at Barnet Marine Park.

Council approved five key themes for the 2017 program:

1. Working People – the lives of Burnaby's citizens;
2. Taking a Stand – collective action and advancing human rights;
3. Protecting the Environment – waterways, green spaces and parks;
4. Celebrating Diversity – multi-cultural Burnaby;
5. Urban Development – building a modern city.

There will be 20 new interpretive plaques, including:

- Burnaby and The Great Depression
- Barnet Mill and Company Town
- Chinese-Canadian Farmers
- Eileen Dailly
- First Nations
- Willingdon Heights
- Dominion Bridge
- Alan Emmott
- Kingsway "Cool"
- Burnaby Lake
- Brunette River
- Ernie Winch and New Vista

In conclusion, Mr. Wolf noted that BC 150 funding will allow staff to augment the City's plaque program by new research and develop online video vignettes to accompany the markers in a new expanded interpretive program.

Presentation – From Abbey to Yule

Mr. Wolf provided a PowerPoint presentation on the ABC's of Burnaby's historic street names.

The speaker noted that Burnaby's first street name was selected in 1859 for North Road by the Royal Engineers. Today, over 1,074 street names exist in Burnaby, which provide a fascinating glimpse into a history.

Councillor Jordan

Councillor Jordan noted that Ms. Maurya Biswell submitted her resignation due to relocation to Vernon.

MOVED BY COUNCILLOR DHALIWAL
SECONDED BY COMMISSIONER MARCHIONI

THAT Ms. Biswell's resignation be received; and

THAT a letter be sent to Ms. Biswell thanking her for her service on the Commission.

CARRIED UNANIMOUSLY

Commissioner Les Lee Lowe

Commissioner Lowe noted that this year's Heritage Fair at the Burnaby Village Museum was very successful, and encouraged the Commission members to attend the Fair next year.

5. INQUIRIES

There were no inquiries brought before the Commission at this time.

6. ADJOURNMENT

MOVED BY COMMISSIONER MATRICARDI
SECONDED BY COMMISSIONER O'NEILL

THAT this Open Commission meeting do now adjourn.

CARRIED UNANIMOUSLY

The Open meeting adjourned at 7:22 p.m.

Blanka Zeinabova
ADMINISTRATIVE OFFICER

Councillor Colleen Jordan
CHAIR



Office of the City Clerk

D. Back, City Clerk
R. Pasch, City Archivist

INTER-OFFICE MEMORANDUM

TO: CHAIR AND MEMBERS
COMMUNITY HERITAGE COMMISSION

DATE: 30 August 2017

FROM: REBECCA PASCH
CITY ARCHIVIST

FILE: 2410-20
Reference: *Community Heritage
Commission*

SUBJECT: CITY OF BURNABY ARCHIVES – UPDATE

For the information of the Chair and Members of the Community Heritage Commission, the following report outlines the activities and initiatives undertaken by the City Archives since the last CHC meeting:

- We have completed the task of creating a current index of all Council minutes and reports, entirely searchable online. Full-text versions of more than 80% of the documents are available to view, with more being added each day.

Among these records are some of the oldest known surviving records created by the Corporation of Burnaby. Now that these records and all actions of Council since are available electronically, anyone with access to a computer can gain a unique window into the actions, decisions and events that transpired from Burnaby's earliest years and the workings of some of Burnaby's first Mayors and City Council members, through to present day Mayor and Council.

The City Archives has been working all year to provide direct access to all open Council Records through the Heritage Burnaby website and we are excited to see the progress made on this timesaving initiative.

Respectfully submitted,

Rebecca Pasch
City Archivist



Meeting 2017 Sep 07

COMMISSION REPORT

TO: CHAIR AND MEMBERS
COMMUNITY HERITAGE COMMISSION

DATE: 2017 August 28

FROM: DIRECTOR PLANNING AND BUILDING

FILE: 1650 01
Reference: Interpretive Plaques

SUBJECT: REMEMBERING WORKING PEOPLE: “PLAQUES AROUND THE PROVINCE” PROJECT.

PURPOSE: To seek Council approval for the installation of two commemorative plaques under the BC Labour Heritage Centre’s “Plaques Around the Province” project.

RECOMMENDATIONS:

1. **THAT** Council be requested to approve the installation of two commemorative plaques for the BC Labour Heritage Centre’s “Plaques Around the Province” project as outlined in Section 2.0 of this report.
2. **THAT** a copy of this report be sent to the Parks, Recreation and Culture Commission for their information.

REPORT**1.0 BACKGROUND**

On 21 November 2016, Council approved a Community Heritage Commission project initiative to nominate and fund two plaques under the BC Labour Heritage Centre’s Remembering Working People: “Plaques Around the Province” project. This project was initiated in 2015 to identify significant people, places or events that demonstrate the contributions of working people to the history of British Columbia. The BC Labour Heritage Centre expressed their support for both nominations in Burnaby put forth by the Community Heritage Commission earlier this year, and have worked with staff to produce the final plaque designs.

The plaque project would increase the public awareness of the history of working people in Burnaby by highlighting two often overlooked historic events that occurred in the City: the Barnet Lumber Company Mill Workers Strike in 1931 and the Japanese Workmen Railway Disaster near Lost Creek in 1909. This report provides an update on the status of the nominations as well as details of the plaque designs for the information of the Community Heritage Commission and Council.

To: Community Heritage Commission
 From: Director Planning and Building
 Re: Remembering Working People: Plaques Around the
 Province Project

2017 August 28..... Page 2

2.0 BURNABY COMMEMORATIVE PLAQUES

Burnaby's Community Heritage Commission supported the nomination to the "Plaques Around the Province" project to include two significant sites. This section outlines the design and proposed locations for these markers.

Plaque Design

The plaques measure 18" x 29" and are individually crafted and cast in bronze by a union foundry, Ornamental Bronze Limited. The layout and design of the two plaques (*Attachment 1*) are based on a standard template supplied by the BC Labour Heritage Centre with input from staff on the textual and graphic content. The Barnet Lumber Company Mill Workers Strike plaque will incorporate the logo of the Lumber Workers Industrial Union, who led the strike. For the plaque commemorating the Japanese Workmen Railway Disaster, staff reached out to the Nikkei National Museum and Cultural Centre for additional comments and community support for the project with a recommendation to incorporate Japanese characters or "kanji" on the plaque that translate to "Spirit of the Railway".

Location

Site visits were conducted to identify the most appropriate location for the plaques. The main criteria for these locations included good accessibility and exposure to the public, and connection and proximity to the event being commemorated.

The plaque commemorating the Barnet Lumber Company Mill Workers Strike will be located near the site of the original mill at the entrance to an unnamed trail/pathway which traverses Barnet Marine Park at the east end of the swimming beach. It will be mounted on a large natural stone and visible to park visitors walking west along the trail and near the concrete ruins of the former Barnet Lumber Company (*Attachment 2*).

The plaque for the Japanese Workmen Railway Disaster will be located along the Brunette-Fraser Greenway, and within the boundaries of the City's Brunette River Conservation Area to the immediate east of Lost Creek. It will be securely mounted on a metal stand where passersby can also catch a glimpse of the railway tracks above the embankment to the north (*Attachment 3*).

3.0 CONCLUSION

The Remembering Working People: "Plaques Around the Province" project is a unique collaboration between the BC Labour Heritage Centre and the Community Heritage Commission to acknowledge and raise awareness of two significant historic events in Burnaby involving working people. The two plaques will add considerable interest to two popular and well-used park trails in Barnet Marine Park and the Brunette River Conservation Area, and supplement the City's existing heritage interpretation plaque program.

To: Community Heritage Commission
From: Director Planning and Building
Re: Remembering Working People: "Plaques Around
the Province" Project
2017 August 28.....Page 3

With the concurrence of the Community Heritage Commission and Council, staff will work cooperatively with the BC Labour Heritage Centre to install the plaques at the approved locations.


Lou Pelletier, Director
PLANNING AND BUILDING

HL:sa
Attachments (3)

Copied to: City Manager
Director Engineering
Director Finance
Director, Parks, Recreation and Cultural Services
City Clerk

R:\Long Range Clerical\DOCS\HL\Reports\2017\Remembering Working People (2017.09.07).docx



Barnet Lumber Company Mill Workers Strike 1931

In September 1931, some 360 workers at Barnet Lumber Co., led by the Lumber Workers Industrial Union, went on strike to protest wage reductions. Four cuts in the previous two months, the last being 20 per cent, drove wages as low as 19 cents an hour. The action was sparked by a larger strike at Fraser Mills in Coquitlam, another instance of workers' resistance to the stark conditions of the depression years. In response to the walkout, the mill's U.S. owners locked the workers out and shut down operations. Picketing continued for several weeks amidst intervention by Provincial Police and infantry, but Barnet Lumber never re-opened and eventually fell into tax default. Formerly known as the North Pacific Lumber Company, the sawmill was originally one of the largest lumber producers in the British Empire, employing Japanese, Chinese and East Indian labourers. Many of the men affected by the 1931 lockout remained unemployed until World War 2.

BC LABOUR
HERITAGE
CENTRE

2017
Union Made



COMMUNITY HERITAGE COMMISSION

鐵道魂

Great Northern Railway Disaster, 1909

In the early hours of November 29, 1909, a Great Northern train transporting 43 railway labourers to carry out track repairs plunged into this ravine (Lost Creek). Twenty three men, mostly of Japanese descent, were killed in the crash, illuminating the dangerous conditions faced by early railway workers. Unlike the crew members, the Japanese workers had been crowded into a boxcar and could not jump to safety. Rescue efforts were hampered by darkness, the steep banks of the ravine and the torrent of water from Lost Creek. A coroner's inquest revealed that the accident was caused by the storm and unsafe track design, and recommended that a night track-walker be employed during severe rainstorms.

BC LABOUR
HERITAGE
CENTRE

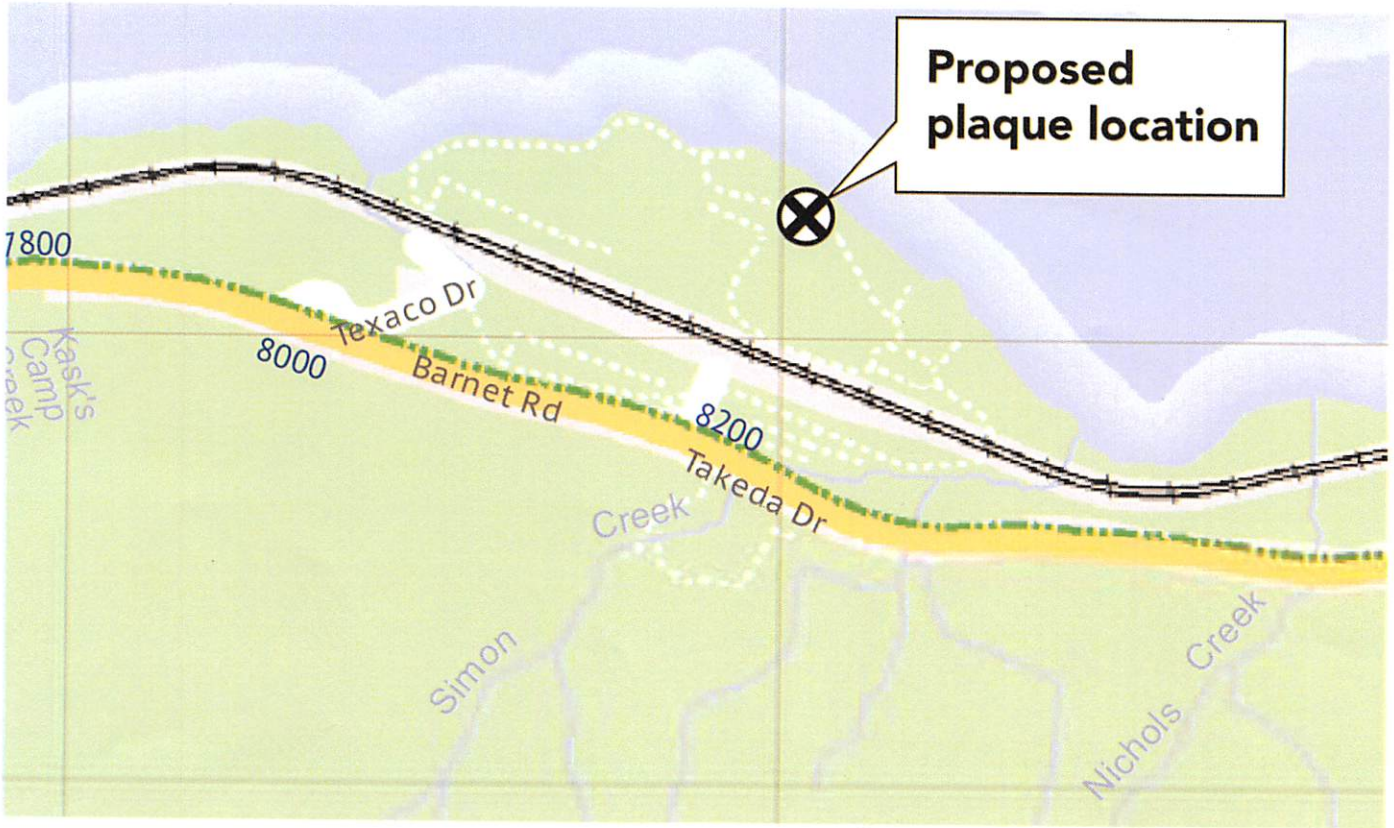
2017
Union Made



COMMUNITY HERITAGE COMMISSION

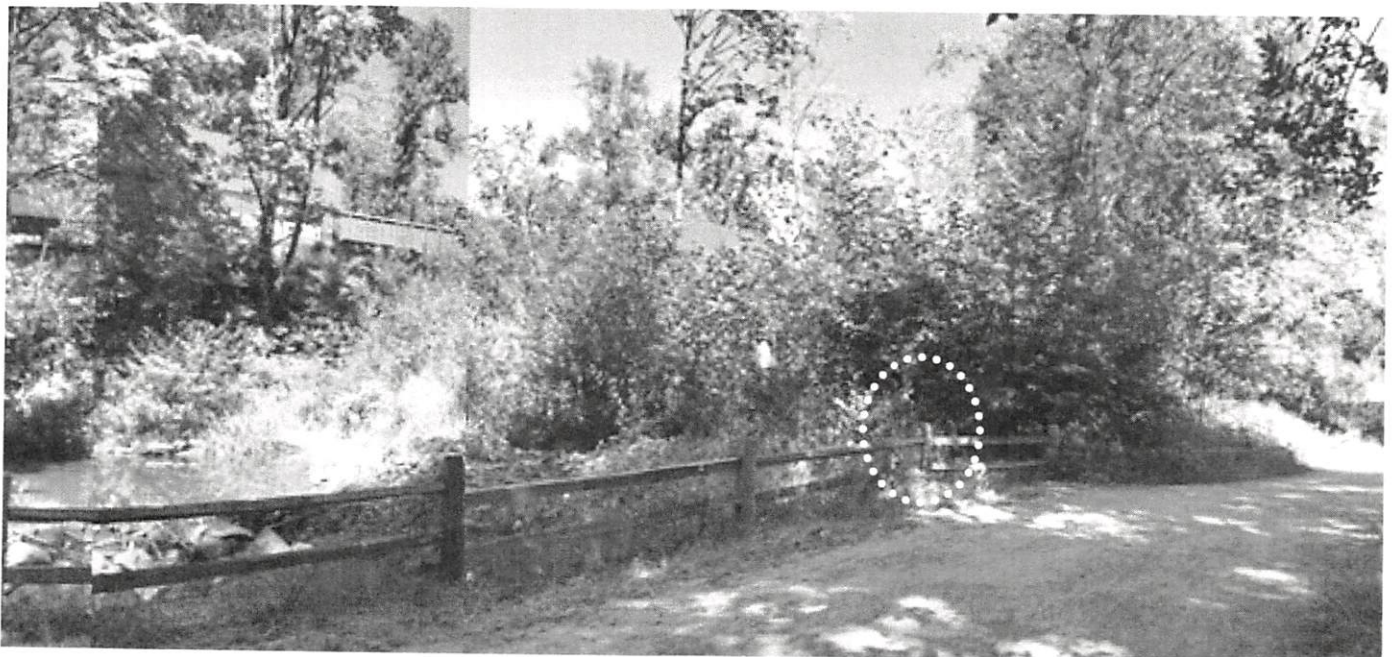
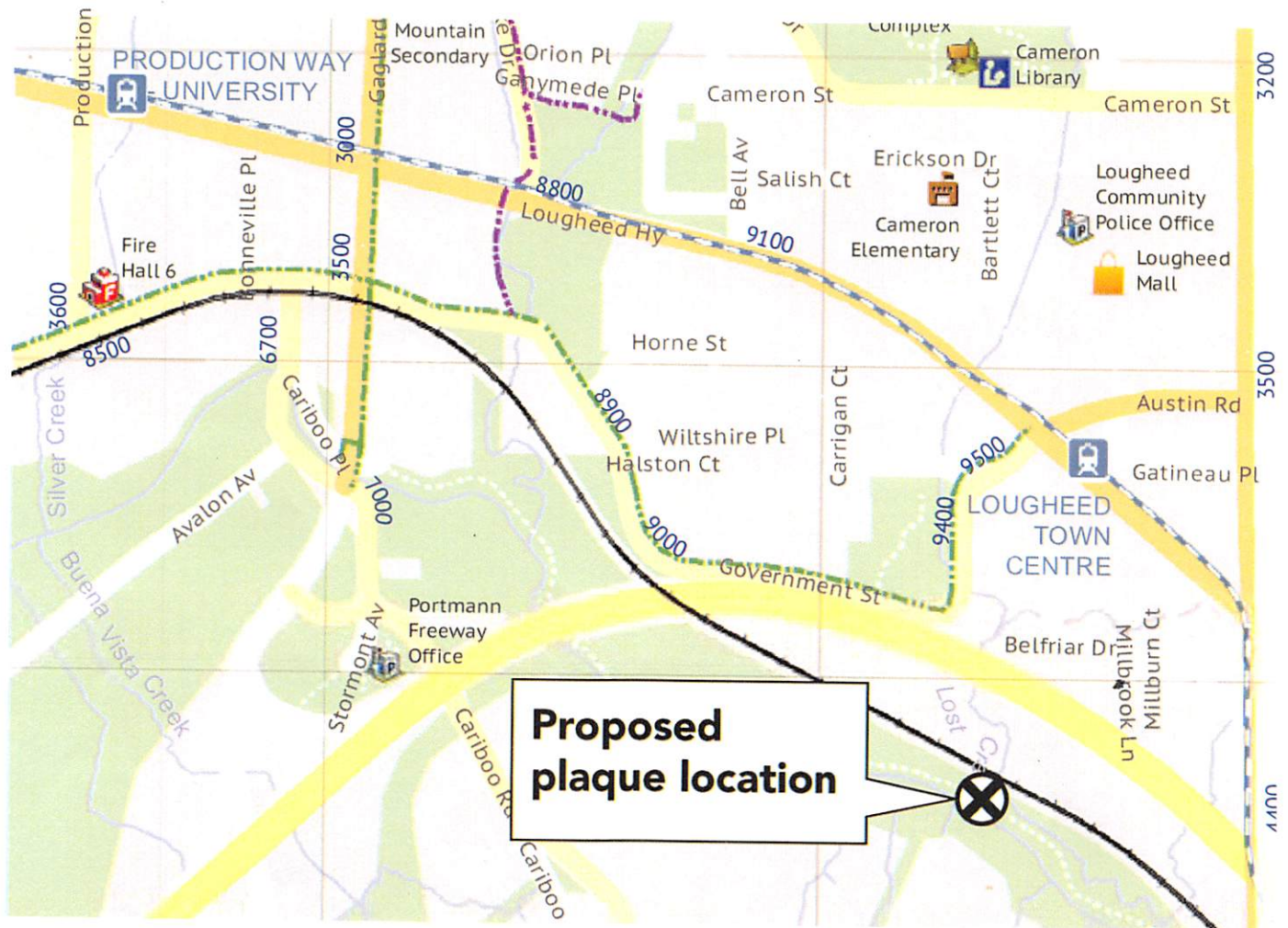
**Barnet Lumber Company Mill Workers' Strike, 1931
Proposed Plaque Location**

Attachment 2



Great Northern Railway Disaster, 1909 Proposed Plaque Location

Attachment 3





Meeting 2017 Sep 07

COMMISSION REPORT

TO: CHAIR AND MEMBERS
COMMUNITY HERITAGE COMMISSION

DATE: 2017 August 30

FROM: DIRECTOR PLANNING AND BUILDING

FILE: 1650-20
Reference: Burnaby 125

SUBJECT: "BURNABY THEN AND NOW"
CELEBRATING BURNABY 125 WITH HERITAGE MARKERS

PURPOSE: To present an overview of the design and location of the Burnaby 125 Heritage Markers project.

RECOMMENDATION:

1. **THAT** Council be requested to approve the final design and location for a series of plaques produced under the Burnaby 125 Heritage Markers project, as outlined in this report.

REPORT**1.0 BACKGROUND**

Earlier this year, Council approved an expenditure of \$60,000.00 from the City's Gaming Fund to implement the Burnaby 125 Heritage Marker project. An additional \$57,000.00 to expand the project was secured through the "British Columbia Canada 150: Celebrating B.C. Communities and Their Contributions to Canada" grant program. The Burnaby 125 Heritage Marker project is intended to create and install a series of heritage markers at key locations throughout the City and linked to additional interpretation on the Heritage Burnaby website to celebrate Burnaby's 125th anniversary and acknowledge its rich and diverse history. This report is intended to provide the Community Heritage Commission and Council with an update on the project and present the final design concept and proposed locations of 12 plaques.

2.0 BURNABY THEN AND NOW

The theme for Burnaby's 125 heritage markers is "Burnaby Then and Now" and celebrates Burnaby's unique stories provided by local residents based on the following five key themes: *Working People, Taking a Stand, Protecting the Environment, Celebrating Diversity and Urban Development.*

To: Community Heritage Commission
 From: Director Planning and Building
 Re: "Burnaby Then and Now" – Celebrating Burnaby
 125 with Heritage Markers

2017 August 30..... Page 2

Research and design for 12 heritage markers as listed below is complete. The plaque designs will be on display at City Hall's public foyer in September 2017. The distribution and location of these plaques are shown in **Attachment #1** and are distributed across each of the four quadrants of the City.

Map Ref.	General Topic	Location of Plaque
1	Burnaby's Response to the Great Depression	Tommy Douglas Library, 7311 Kingsway
2	Diversity of Workforce at Barnet Mill	8382 Burrard Inlet, Barnet Marine Park
3	Kapoor Singh Siddoo	8382 Burrard Inlet, Barnet Marine Park
4	Eileen Dailly	Confederation Park, 250 Willingdon Avenue
5	Chinese-Canadian Farmers of Big Bend	Willard Park, 6280 12 th Avenue
6	Kingsway in the Post-War Era	Public area along Kingsway fronting Station Square – Tower 1, 4650 Kingsway
7.	Alan Emmott and Post-War Burnaby	Alan Emmott Centre, 6650 Southoaks Crescent
8	Saving Burnaby Lake	Burnaby Lake Regional Park (Piper Avenue)
9	Preserving the Brunette River	Central Valley Greenway (near Gaglardi Way)
10	Willingdon Heights	Willingdon Heights Park, 1491 Carleton Avenue
11	Dominion Bridge to Bridge Studios	Jim Lorimer Park, 2338 Gilmore Avenue
12	New Vista and Ernie Winch	Cafferky Park, 7604 Holly Street

Each plaque utilizes a colourful palette and combines a variety of images and text with interesting graphic styles to draw viewer's attention to its' content. The majority of these plaques will be located outdoors in park and civic areas with easy access and viewing by the public and secured to existing civic structures or new sign stands to prevent theft and/or damage. A sample design is attached showing the overall graphic design concept (**Attachment #2**).

Prior to their final installation, staff will be organizing special exhibits to display the plaques at civic facilities such as libraries and community centres to further promote the project and highlight Burnaby's 125th anniversary celebration. An article featuring this project will be included in the Fall Edition 2017 of InfoBurnaby.

These first plaques under the program have been advanced to coincide with Burnaby's 125th anniversary on September 22, 2017. Existing funding may provide for additional heritage markers, which will be advanced for separate approval, as required.

The additional funds secured through the BC Canada 150 grant program will also be used to produce a companion series of video vignettes to be featured on the City's social media channels

To: Community Heritage Commission
 From: Director Planning and Building
 Re: "Burnaby Then and Now" – Celebrating Burnaby
 125 with Heritage Markers
 2017 August 30..... Page 3

and permanently retained and archived on the Heritage Burnaby website (www.heritageburnaby.ca).

3.0 NEXT STEPS

The Burnaby 125 Heritage Marker project celebrates the City's milestone anniversary by expanding public access to the City's historical information and photographs. The project will provide a more complete and inclusive picture of Burnaby's history that can be shared with the wider community. With the concurrence of the Commission and Council, staff will proceed to manufacture and install the heritage markers, as outlined in this report.

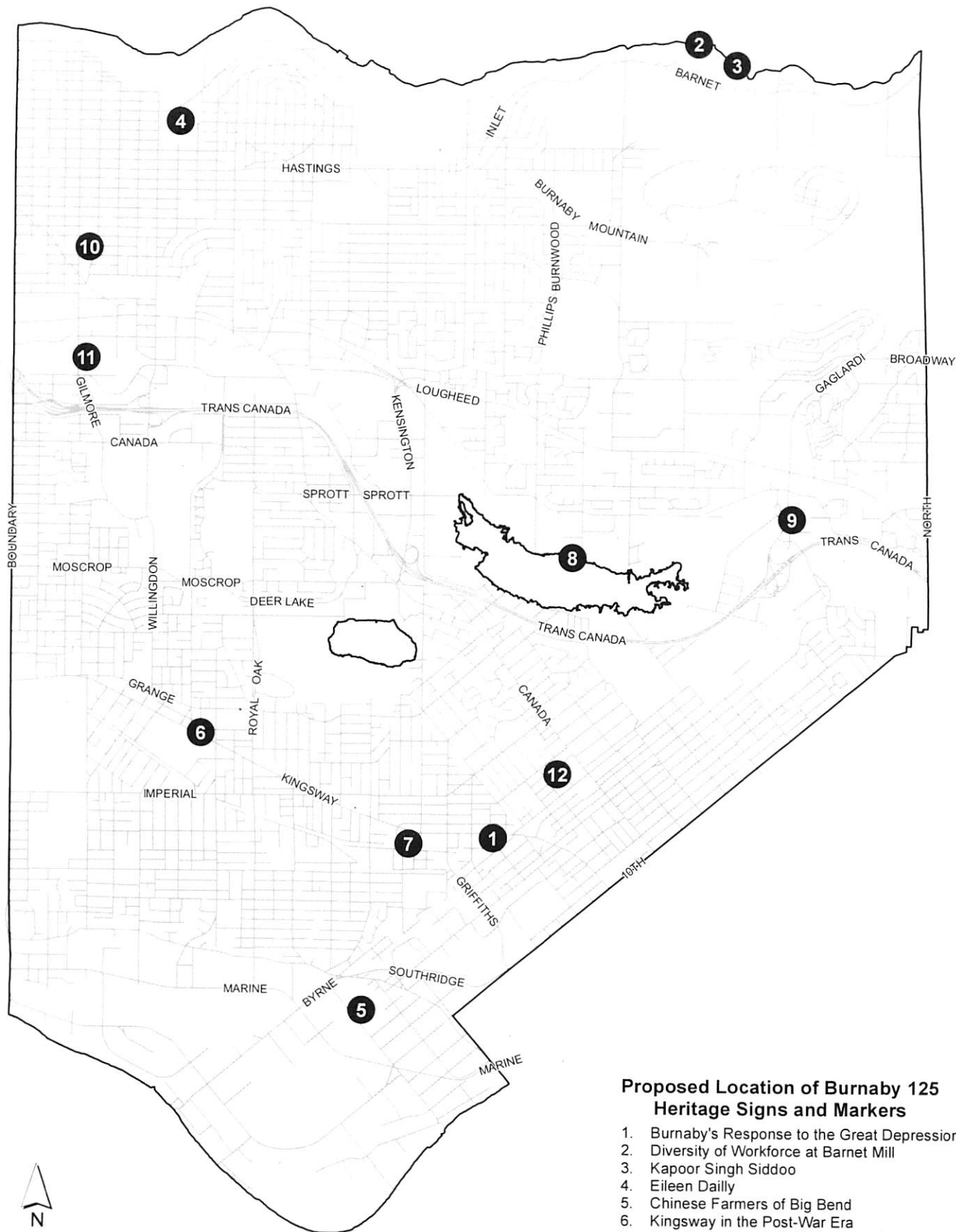

 Lou Pelletier, Director
 PLANNING AND BUILDING

HL:sa

Attachments(2)

Copied to: City Manager
 Deputy City Manager
 City Clerk
 Director Parks, Recreation and Cultural Services

R:\Long Range Clerical\DOCS\HL\Reports\2017\Burnaby Then and Now (2017.09.07).docx



Proposed Location of Burnaby 125 Heritage Signs and Markers

1. Burnaby's Response to the Great Depression
2. Diversity of Workforce at Barnet Mill
3. Kapoor Singh Siddoo
4. Eileen Dailly
5. Chinese Farmers of Big Bend
6. Kingsway in the Post-War Era
7. Alan Emmott and Post-War Burnaby
8. Saving Burnaby Lake
9. Preserving the Brunette River
10. Willingdon Heights
11. Dominion Bridge to Bridge Studios
12. New Vista and Ernie Winch



PROTECTING THE ENVIRONMENT

Saving Burnaby Lake

EARLY HISTORY

Burnaby Lake was used as a transportation route and harvesting site for thousands of years by First Nations people. The water levels of the shallow lake naturally varied from season to season, with the lake expanding in size during peak rainfall periods.

INDUSTRY AND INTERVENTION

By the early 1900s, logging operations had removed the old growth forest surrounding the lake. Seasonal variation in water levels increased without the forest to filter run-off and absorb rainwater. A dam built on the Burnaby River in 1915 to regulate water levels slowed the flow of water, and by the 1950s the lake was filling with silt and aquatic plants.

Human intervention has disrupted the natural processes of Burnaby Lake. Since the 1970s, activists have been working hard to undo the damage.

PRESERVATION AND ADVOCACY

By the late 1960s, the lake was heavily polluted and inaccessible to the public. A coalition of nature and education groups began working to improve the lake's health. The Burnaby Lake Advisory Association built a system of trails around the lake in the 1970s. Public support for the lake grew resulting in the creation of Burnaby Lake Regional Park in 1975.

KEEPING IT NATURAL

Burnaby Lake is slowly filling with peat and silt, which is a natural part of the lake's lifecycle. Today's challenge is to allow this natural process to take place, while preserving the lake as an important habitat for fish and wildlife.



1951: A dam was designed through this lake to increase power. Dam increases flow of water, but also traps silt and debris in the water flow.



1946: The lake was heavily polluted by silt and increasing amounts of waste. Much of the lake bed was then a mass of water covered in the summer months.



1973: A large rectangular riprap area was installed at the lake's mouth to help control erosion and prevent debris from entering the lake.



1970s: Cleanup events were held regularly beginning in the 1970s. The 1985 cleanup was the largest, with over 100 volunteers.

PEOPLE



Dorcas Lawson advocated for preservation of Burnaby Lake for over 20 years.



HERITAGE BURNABY

More info? heritageburnaby.ca



Meeting 2017 Sep 07

COMMISSION REPORT

TO: CHAIR AND MEMBERS
COMMUNITY HERITAGE COMMISSION

DATE: 2017 Aug 28

FROM: DIRECTOR PLANNING AND BUILDING

FILE: 3520 20
Reference: Interpretive Signs

SUBJECT: NEW KAPOOR SINGH SIDDOO "STOP OF INTEREST" SIGN

PURPOSE: To seek Council's concurrence with implementation of a new interpretive sign under the Provincial government's "Stop of Interest" signage program.

RECOMMENDATIONS:

1. **THAT** Council authorize staff to facilitate the installation of the proposed Provincial "Stop of Interest" sign for Kapoor Singh Siddoo in Barnet Marine Park, as outlined in Section 3.0 of this report.
2. **THAT** a copy of this report be sent to the Parks, Recreation and Culture Commission for their information.

REPORT**1.0 BACKGROUND**

At its meeting on 2016 November 03, the Community Heritage Commission received correspondence from the Ministry of Transportation and Infrastructure seeking nominations for new signs under its Stop of Interest signage program. The Commission requested staff to advance nominations to the program to recognize people and places in Burnaby that helped shape the history of British Columbia. When the nomination period closed at the end of January, over 500 nominations were received for 75 new signs. One of the new signs includes Burnaby's nomination of Mr. Kapoor Singh Siddoo, a pioneer Indo-Canadian Sikh who founded the Kapoor Sawmills Ltd. and was instrumental in increasing rights for the Southeast Asian community in British Columbia. This report outlines the new sign commemorating Mr. Siddoo and seeks Council's approval for the next steps of implementation of the project.

2.0 "STOP OF INTEREST" SIGNAGE PROGRAM

Between September 2016 and January 2017, the BC Ministry of Transportation & Infrastructure invited the public to submit nominations for 75 new signs as part of their Stop of Interest signage program. The program, originally introduced in 1958, displays signs along provincial routes to invite travellers to reflect on people, places and events that helped shape the history of British Columbia. Since then, more than 100 signs have been erected throughout the province.

To: Community Heritage Commission
 From: Director Planning and Building
 Re: Ministry of Transportation and Infrastructure - New
 "Stop of Interest" Signs

2017 August 28..... Page 2

The overall size and design of the "Stop of Interest" sign is based on a standard template developed by the Ministry of Transportation & Infrastructure, which measures approximately 3 feet by 3 feet in size, and will be manufactured and installed by the Ministry's contractors. The content for Mr. Siddoo's sign has been developed in conjunction with the Provincial government, Planning staff and the family of Mr. Siddoo who are still actively involved in Burnaby (see *Attachment 1*).

3.0 SIGN LOCATION

Installation of the sign is proposed for a location in Barnet Marine Park near the entrance to one of the trail junctions within the park (*Attachment 2*). Ongoing maintenance costs and replacement will be the responsibility of the Ministry of Transportation & Infrastructure in cooperation with City staff, who will help manage the sign under the City's existing heritage interpretive plaque program.

Augmenting the installation of this sign honouring Mr. Siddoo will be another set of interpretive plaques proposed for Barnet Marine Park as part of Burnaby's 125th anniversary. A separate report is included for consideration of the Commission and Council.

4.0 NEXT STEPS

The new "Stop of Interest" sign recognizing Mr. Kapoor Singh Siddoo provides a good opportunity to bring further awareness and recognition to both local and provincial heritage and history and build on the City's existing heritage interpretative plaque program.

With the concurrence of the Community Heritage Commission, staff will work with the Ministry of Transportation & Infrastructure to facilitate the manufacture and installation of the interpretive sign.


 Lou Pelletier, Director
 PLANNING AND BUILDING

HL:sa

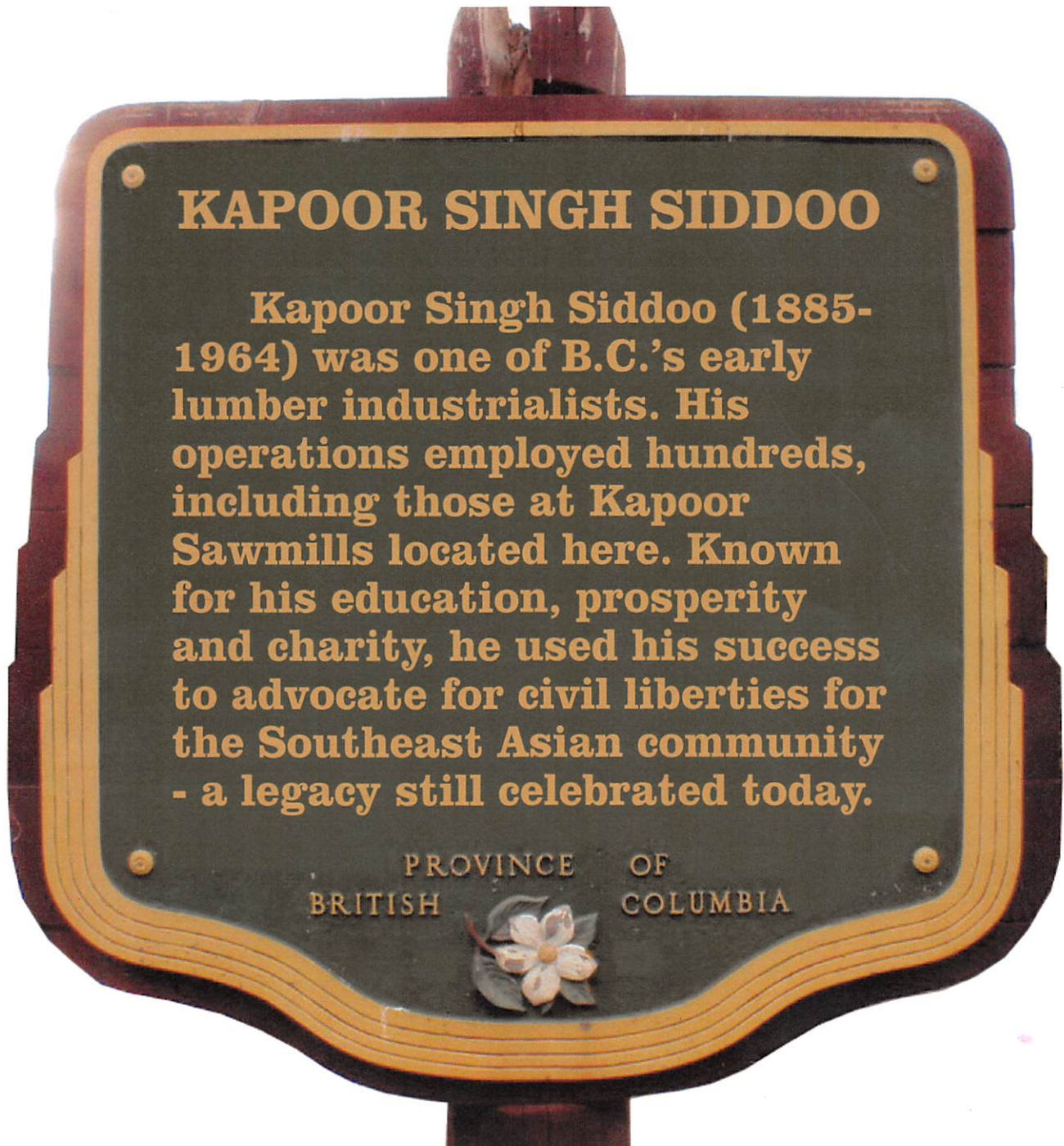
Attachments

Copied to: City Manager
 Director Engineering
 Director Parks, Recreation and Cultural Services
 City Clerks

R:\Long Range Clerical\DOCS\HL\Reports\2017\New Kapoor Singh Siddoo Stop of Interest (2017.09.07).docx

Mock-up of proposed "Stop of Interest"
sign for Mr. Kapoor Singh Siddoo

Attachment 1



Proposed Location of Sign at Barnet Marine Park

Attachment 2

