

RCMP



ROYAL CANADIAN MOUNTED POLICE

LOWER MAINLAND DISTRICT REGIONAL POLICE SERVICE - **CONNECTED TO OUR COMMUNITIES**

January/February 2015



Burnaby RCMP Community Police Report

“Partners for a Safe Community”



Royal Canadian Mounted Police
Gendarmerie royale du Canada

“Partners for a Safe Community”

www.burnaby.rcmp.ca

Canada

Message from the Chief



On behalf of the members, staff and volunteers of the Burnaby RCMP Detachment, I am very pleased to present our Community Police Report for January/February 2015. This report is a snapshot of the work undertaken by our Detachment team, in partnership with numerous stakeholders and the citizens of our community, to keep our city safe and secure.

We have continued to move forward with the implementation of our Annual Performance Plan with the approved 2014/2015 priorities: Property Crime; Mental Health; Youth; Violent Crime; Road Safety.

Over 2014, the Burnaby RCMP responded to 60,263 calls for service which represents an increase of 11 per cent in calls over 2013. Calls for service, include everything from assisting the public in a traffic accident to property-related crime. What it doesn't represent however is the impressive number of hours police officers, municipal staff and our volunteers contribute to the communities where they live and work.

Last year over 60 police officers, municipal employees and citizens of Burnaby were recognized for their outstanding work above and beyond the call of duty during my annual OIC's Awards Ceremony. In addition, our volunteers who are one of our most important partnerships, continues to selflessly give of their time to assist the Burnaby Detachment every year. For example, our Auxiliary Constables volunteered 2,932 hours in 2014 which included participation at many community events including the Remembrance Day Ceremonies and Hats Off Day to name a few.

In 2014, our volunteers at the Community Police Offices spent 131,560 hours conducting cell watch checks as part of our distracted driving campaign.

The crime statistics for the first two months of 2015, show a marked decrease when compared to the same time period last year. Specifically in robberies, personal robbery, break and enters to businesses, auto theft and theft from auto. It is gratifying to note that the latter two crime types, auto theft and theft from auto are going down as we enter into the New Year. In 2014, auto-related crime was up significantly throughout the Lower Mainland. However, the decrease is likely due in part to the arrest of some very prolific offenders with the most active among them, being held in custody. We still do have some areas of concern, specifically, break and enters to residences. We will continue to aggressively investigate these crimes and target individuals who are responsible.

Thank you for taking the time to review our report. We welcome your feedback. For information about our Annual Performance Plan, Crime Reduction Strategy, programs and services, current events and contact details, please visit our website at burnaby.rcmp.ca.

D.T. (Dave) Critchley, Chief Superintendent
Officer in Charge, Burnaby RCMP Detachment



Crime Reduction

Crime Reduction involves the commitment of the entire Detachment and our community partners to be effective. Our team meets bi-weekly during our Compstat (Comparative Statistics) sessions to identify crime trends in our community and identify “hotspots” of activity. On behalf of their members and staff, our team leaders make commitments to target this activity and identify those responsible. This is not solely a police response. We engage Block Watch and Community Programs to report suspicious activity in an effort to reduce crime in our community. Our analysts track every type of crime committed, however we focus on several “monitored crime types” which have a direct impact on the majority of our community. These are mostly crimes which deal with property offences.



In the first two months of 2015*, Burnaby is showing a decrease in a number of crime types with the most significant drop being seen in auto-related property crime.

Overall, auto theft was down by 24 per cent in the first two months while theft from auto showed a drop of 23 per cent. The drop may be due in part to the arrests of a number of prolific offenders, who also remain in custody. One of the most significant drops was in District 3 where there was a 57 per cent decrease in thefts from autos and a 32 per cent drop in auto theft. The drop in auto-related crime in the first two months is good news considering the significant increase in this crime was occurring all over the Lower Mainland for nearly all of 2014.

Robberies and break-ins at businesses are also showing an overall drop with robberies down by 9 per cent and break and enters to businesses dropping by 16 per cent. Highlights include a 48 per cent drop in break and enters to businesses in District 2 and a 25 per cent drop in robberies in District 4.

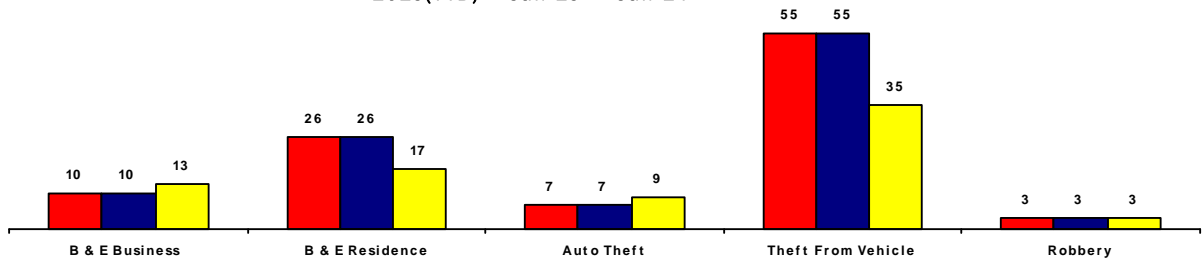
Unfortunately, all four districts are experiencing an increase in break-ins at residences. Some of these break-ins are happening when a garage door is left open or theft is occurring inside apartment common areas. We remain concerned about these break-ins and our Community Response Teams have identified some problem premises and individuals who may be the root cause the increase to residential break-ins.

** Note: February crime statistics are as of Feb. 23.*



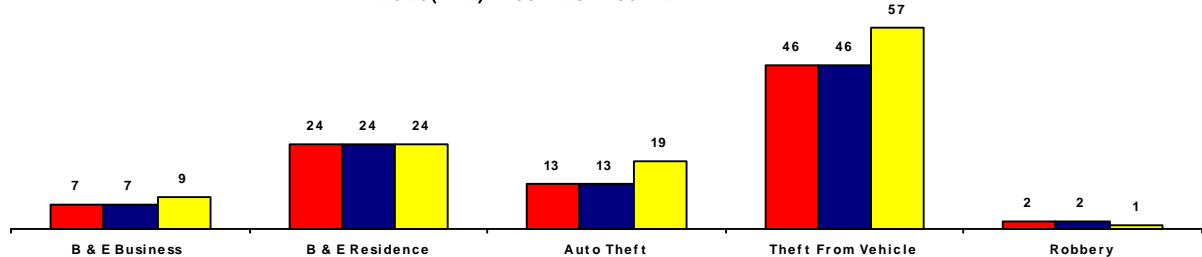
D1 Monitored Crime Types (Year to Date)

■ 2015(YTD) ■ Jan-15 ■ 'Jan-14



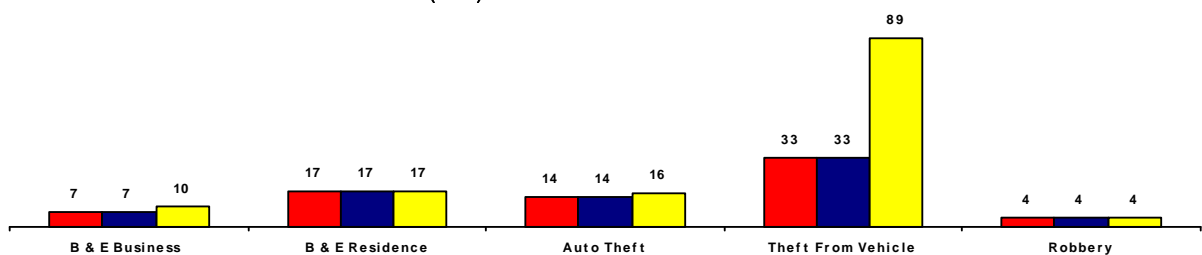
D2 Monitored Crime Types (Year to Date)

■ 2015(YTD) ■ Jan-15 ■ Jan-14



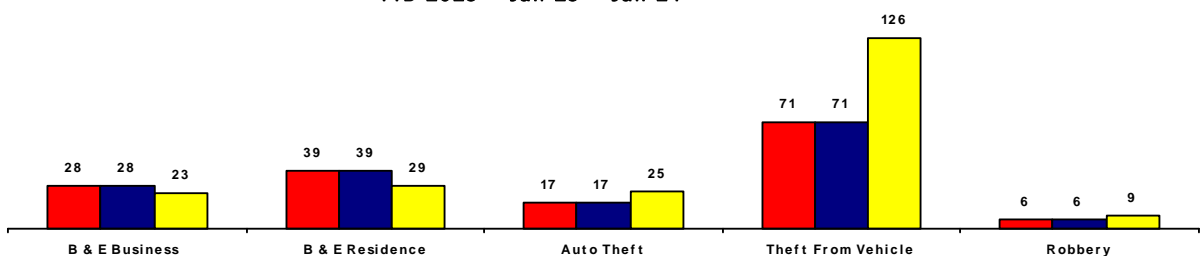
D3 Monitored Crime Types (Year to Date)

■ 2015(YTD) ■ Jan-15 ■ Jan-14



D4 Monitored Crime Types (Year to Date)

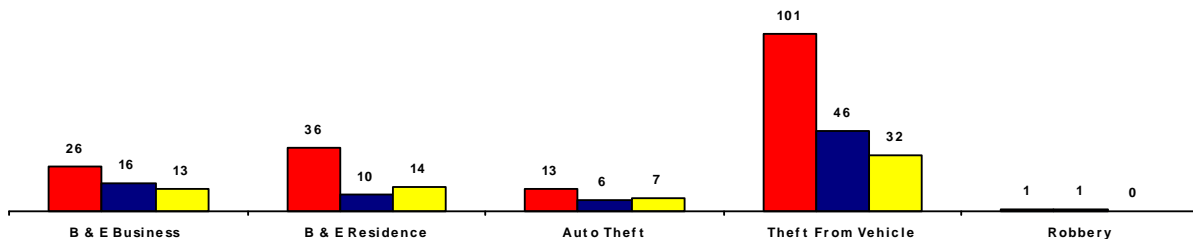
■ YTD 2015 ■ Jan-15 ■ Jan-14





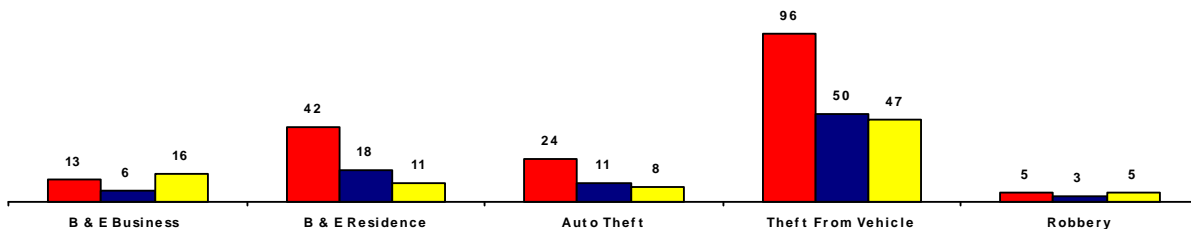
D1 Monitored Crime Types (Year to Date)

■ 2015(YTD) ■ Feb-15 ■ Feb-14



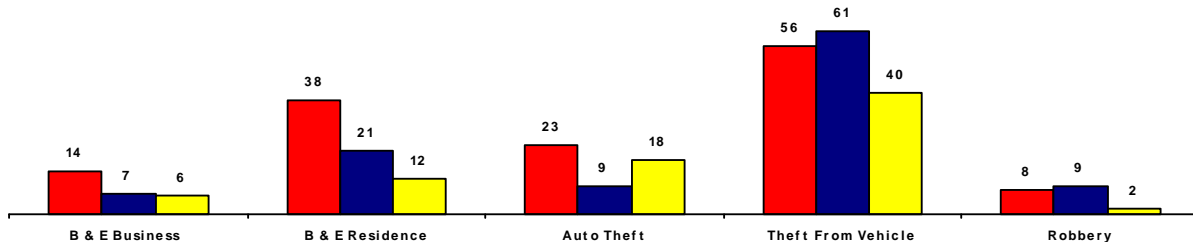
D2 Monitored Crime Types (Year to Date)

■ 2015(YTD) ■ Feb-15 ■ Feb-14



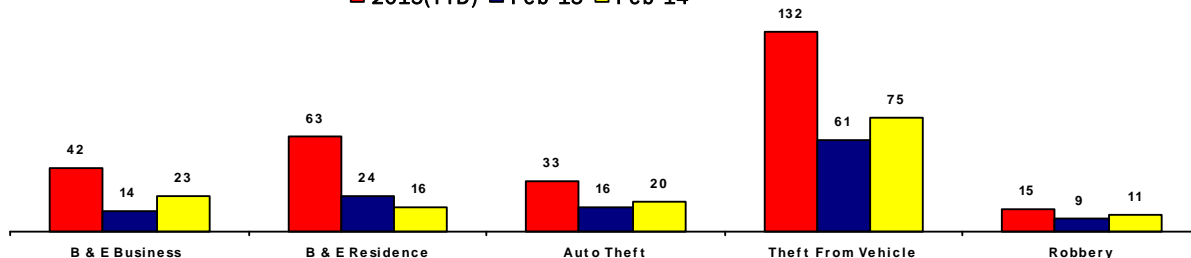
D3 Monitored Crime Types (Year to Date)

■ 2015(YTD) ■ Feb-15 ■ Feb-14



D4 Monitored Crime Types (Year to Date)

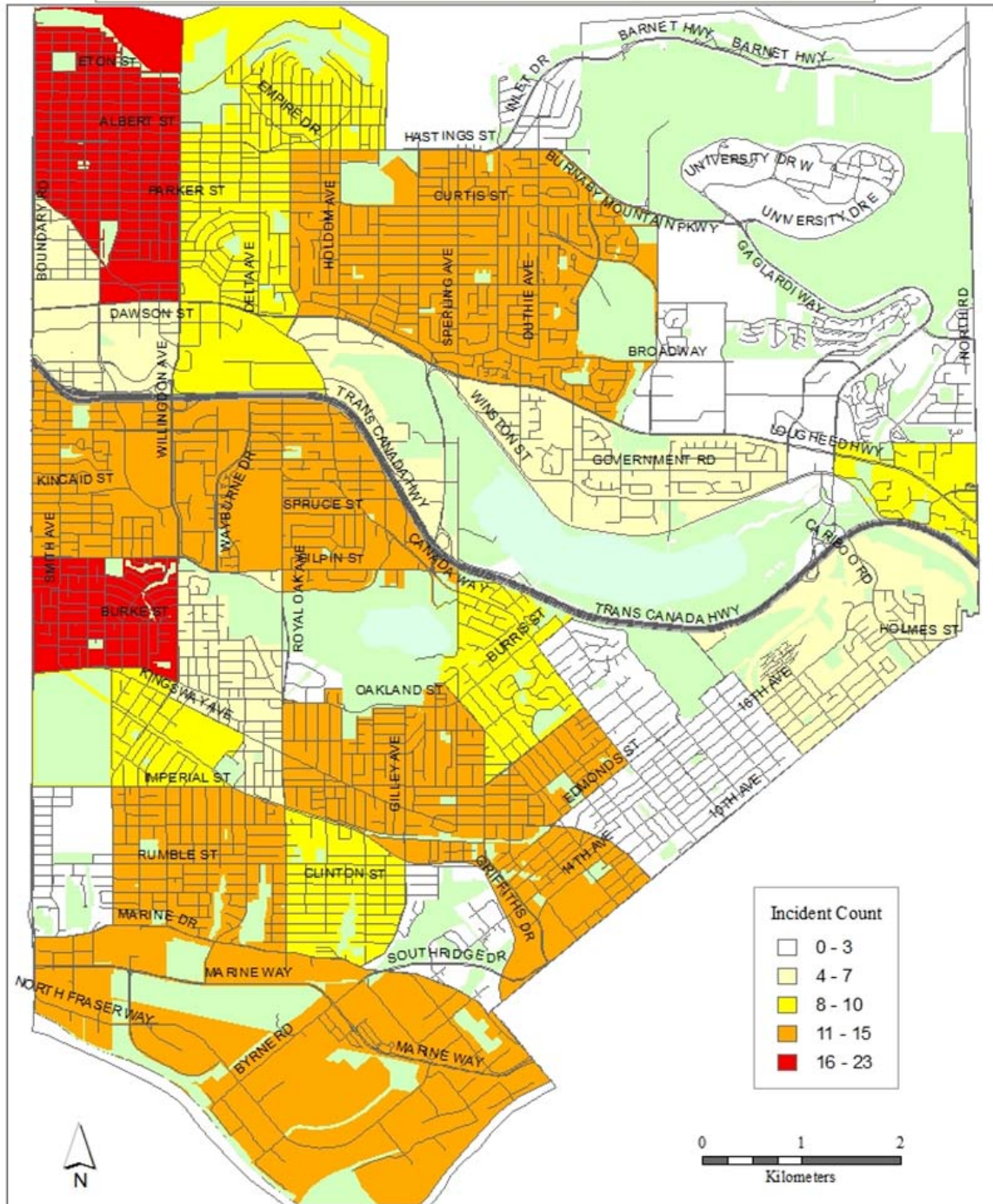
■ 2015(YTD) ■ Feb-15 ■ Feb-14





Crime Density Map

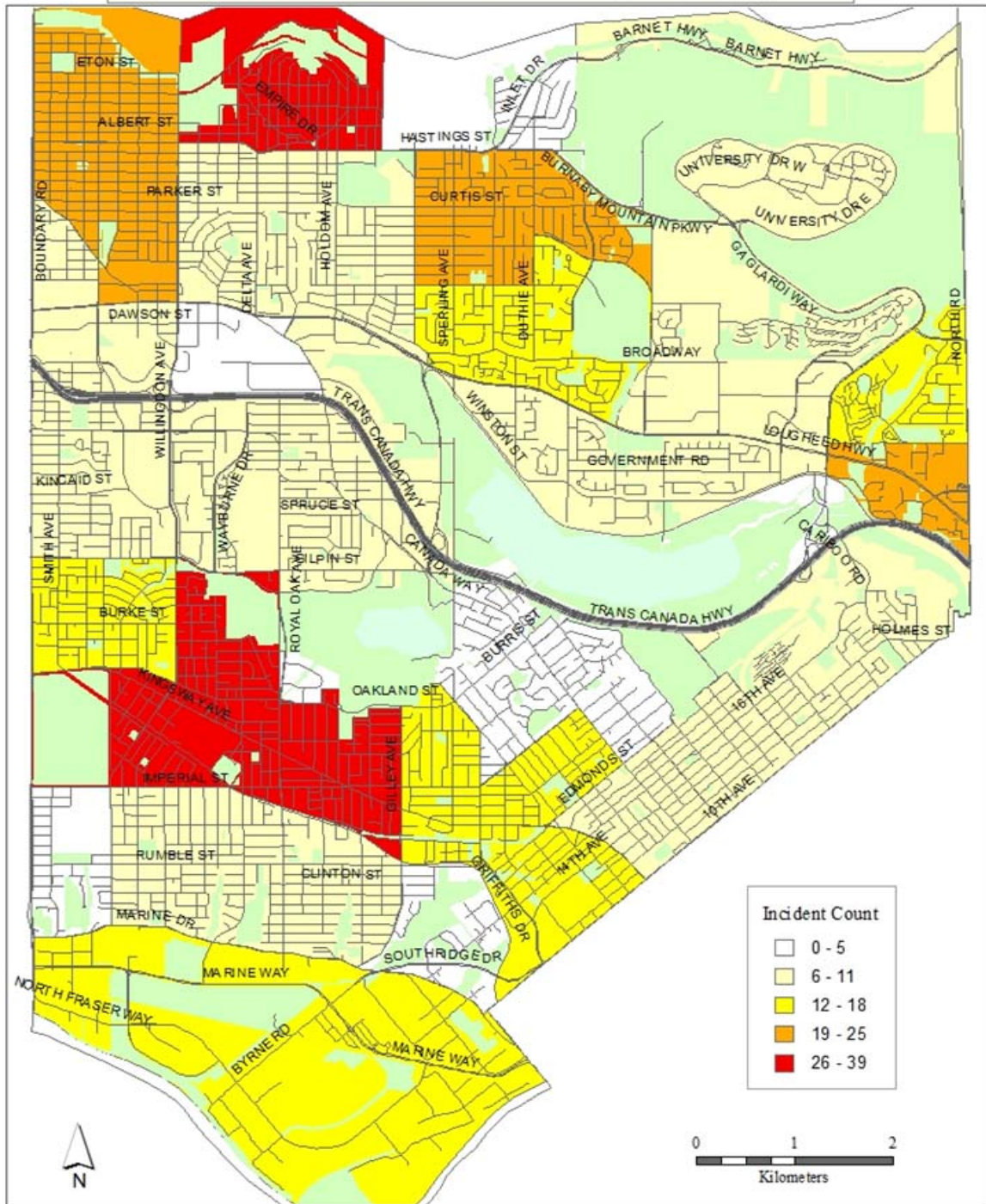
Break & Enter by Neighbourhood -- January & February 2015





Crime Density Map

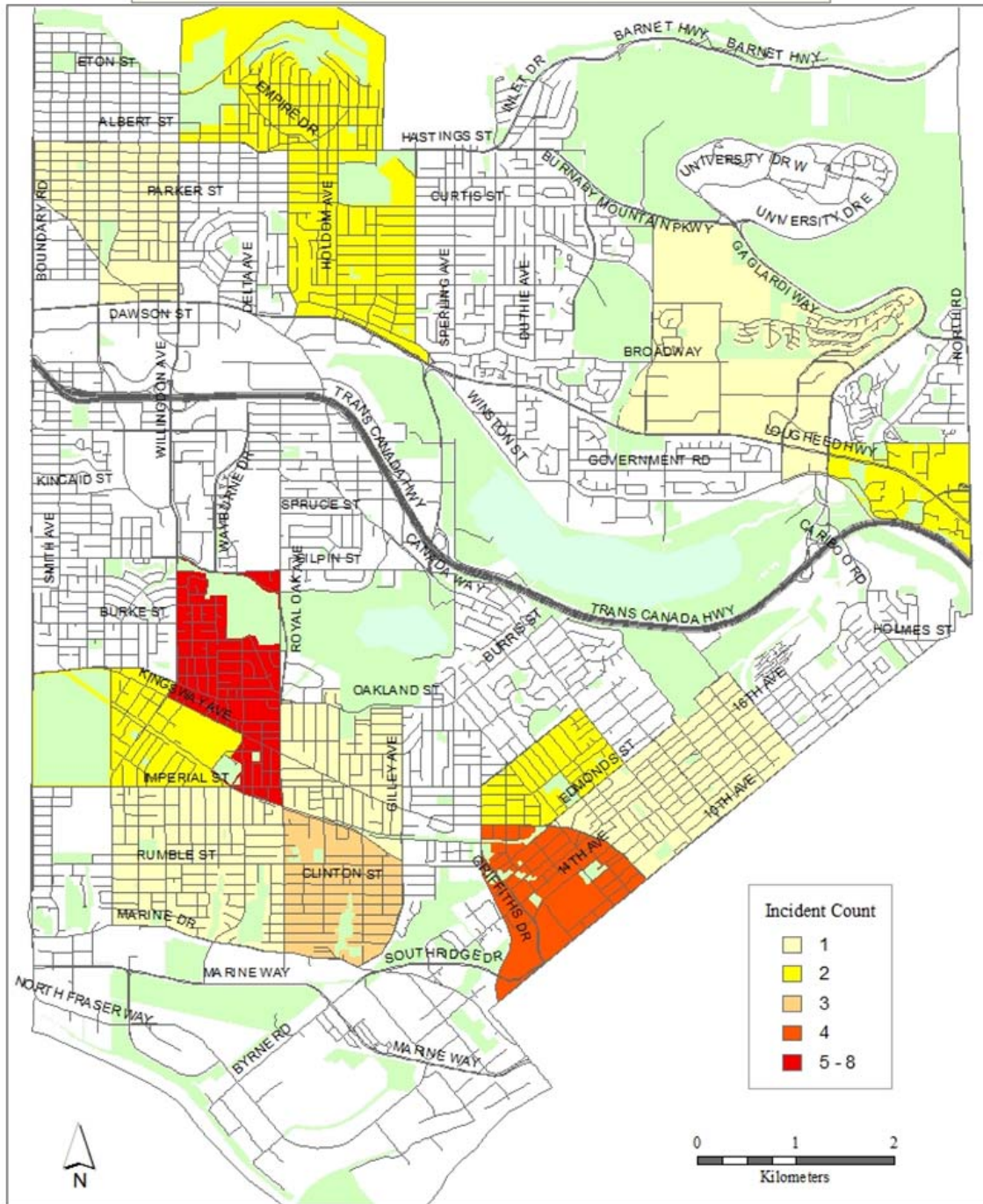
Auto Crimes by Neighbourhood -- January & February 2015





Crime Density Map

Robbery by Neighbourhood -- January & February 2015





Major Investigations

Burnaby Detachment members respond on average to over 170 calls for service per day. Many of these require extensive investigation over a long period of time. Major investigations often require detailed witness interviews, development of grounds for search warrants, undercover operations and lengthy court preparation. As such, major files are turned over to our plainclothes units, usually after first response by General Duty. The following major investigations are a snapshot of the work of these units.

UPDATE: The Burnaby Economic Crime Unit has been investigating a fraud where a BC Hydro employee had defrauded them of \$25,000, and attempted to obtain a further \$53,000. The suspect was hired using an alias, as a customer service representative. It was later learned that she had stolen a Nova Scotia victim's identity. The police were able to positively identify the suspect as she had been a suspect in a previous investigation where she had defrauded a large telephone company. The suspect had manipulated the system and posed as BC Hydro customers in order to have fraudulent rebate cheques issued to her associates. Charges were forwarded and a warrant has been issued for her arrest. The suspect's photograph and details have been posted on Solve Crime Vancouver as one of British Columbia's most wanted.

There are a number of major investigations that are current and have occurred over the past two months, but we are unable to discuss details until the completion of the investigations.



Community Operations

The Community Response Teams (CRT) are the face of Community Operations in Burnaby. The mandate of the CRT is to target specific neighborhood and community problems such as problem properties, repeat calls to service, social chronic offenders and crime hot spot problems in Burnaby with the goal of enhancing public safety and reducing calls for service.

The Community Response Team (CRT) has had some recent successes including a multi-jurisdictional investigation into a series of home invasion robberies. CRT members assisted another Lower Mainland detachment investigating a crime group that had committed a home invasion with a firearm. The suspects were known to live in Burnaby and CRT members provided surveillance and were credited with finding a crucial piece of evidence during a search of a local residence. This is a great example of RCMP detachments working together across jurisdictions to capture multi-jurisdictional criminals.

Recently, CRT members were conducting patrols in the area of the Royal Oak/Beresford SkyTrain Station when they observed two people acting in a manner consistent with drug trafficking. The CRT members stopped the vehicle and arrested a man and woman. Police seized drugs, multiple cell phones and cash. The suspects' vehicle was also seized as offence-related property. Charges against the couple are pending.

Recently, the Burnaby RCMP responded to the Grand Villa Casino to investigate a report of a stolen vehicle. The victim, a 44-year-old woman, parked her vehicle in the parking lot and proceeded to walk inside the casino. When the victim returned to the parking lot two hours later, her vehicle was missing.

Two days later, the Burnaby Prolific Offender Suppression Team (POST) took conduct of the investigation. POST members attended the Grand Villa Casino and liaised with Casino Security who provided security video surveillance that captured the theft of vehicle. The security videos showed a man taking the keys from the victim's purse as she played a slot machine. The man was then seen walking through the casino parking lots pressing the remote key device until he located the victim's vehicle. The male then proceeded to enter the vehicle and drive it out of the parking lot.

POST was able to identify a suspect and a report to Crown Counsel recommending charges of Theft of Vehicle and Possession of Stolen Property was submitted. Police are currently attempting to locate and arrest the suspect male.

The Burnaby RCMP would like to remind citizens to maintain physical control of their effects at all times while in public. Thieves who pick-pocket are active in our community.

Traffic Operations

Traffic Section is responsible for investigating major traffic related files such as pedestrian/vehicle collisions, serious collisions and fatalities. They are also the spearhead for the enforcement of the Motor Vehicle Act. As part of our Crime Reduction Strategy and in accordance with Burnaby's Annual Priorities, they are supported by every operational member of the Detachment in their efforts to make the streets of Burnaby as safe as they can be.

For the month of January, Traffic Services conducted 10 investigations that involved collisions between motorists and pedestrians/cyclists. This is comparable to the same time period last year but a slight increase in January 2015 over December 2014. Thankfully, none of the pedestrians' injuries were life threatening. The bad weather and poor visibility were contributing factors. A reminder that pedestrians and drivers share a dual responsibility for safety. It is imperative for drivers to remain vigilant and to drive reasonably. Conversely, pedestrians should not assume they are seen by drivers. Please don't take chances by crossing at non-designated locations.

On January 5, 2015 at 8:15 am, at the intersection of Willingdon and William Street, a 15-year old girl was crossing the street from west to east on Willingdon. It was raining lightly at the time and this pedestrian had her umbrella braced against the breeze. Unfortunately, she failed to notice the approach of a southbound Chevrolet Volt, operated by a 45-year old male driver. The Chevrolet had an in-car video system and the collision with the pedestrian was captured on video. A significant impact was obvious upon the windshield of the vehicle and the female pedestrian was transported to Children's Hospital for medical attention.

On February 17, 2015 at 12:36 pm, a serious collision occurred at the intersection of Canada Way and Gardner Court. According to witness accounts, an Infiniti was travelling along Canada Way. The occupants of the Infiniti included an 18-year old male novice class driver and two 18-year-old passengers.

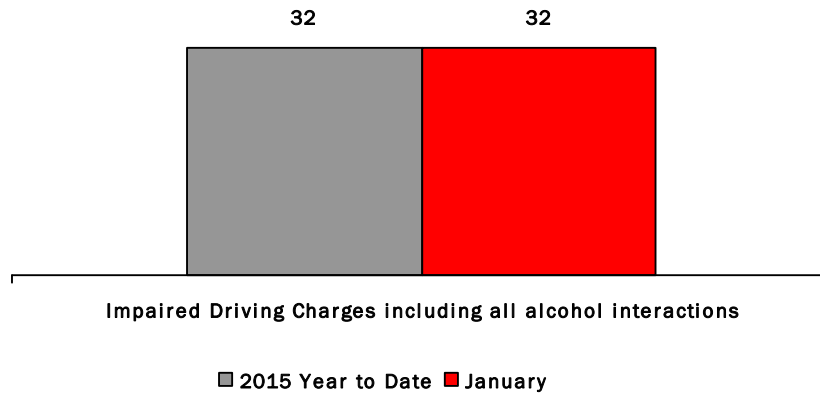
At the intersection, a Volkswagen emerged onto Canada Way and was completing a right turn onto Canada Way. A 58-year old female driver and her 20-year old son were occupants in the Volkswagen. A collision occurred between the Volkswagen and Infiniti which resulted in a subsequent collision with a bus shelter. The Infiniti lost control and continued onto the sidewalk and struck a 23-year female pedestrian. The female pedestrian sustained severe head injuries and was declared deceased at the hospital. All the vehicle occupants sustained non-life threatening injuries but were transported to local hospitals for treatment.

A reminder for the public that speed limits and responsible driving needs to be adhered to within the City of Burnaby.

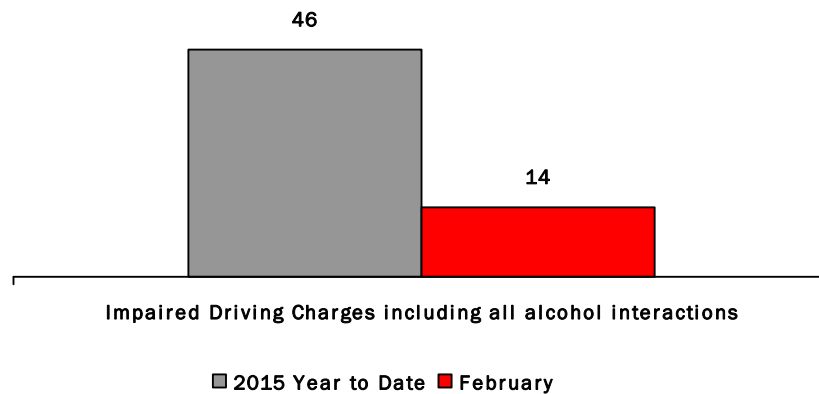


Impaired Driving Enforcement numbers

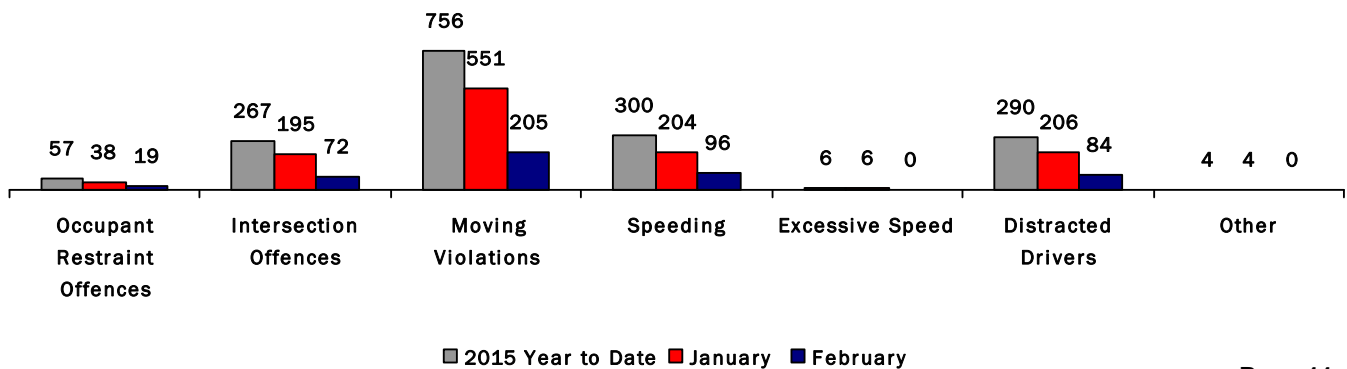
January



February



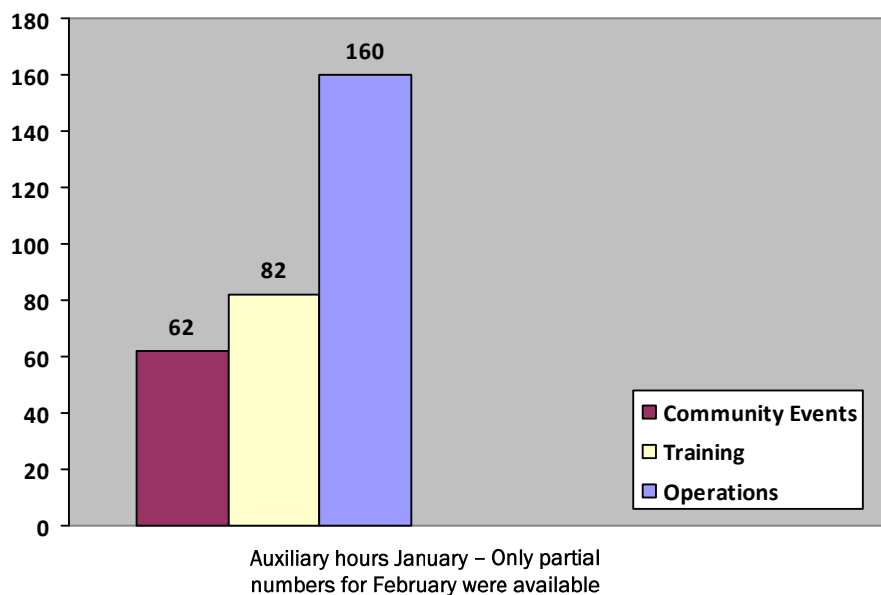
Moving Violation Enforcement numbers



Crime Prevention and Victim Services Auxiliary Constable Program

Crime Prevention and Victim Services provides support to members of our community through information sessions, the Auxiliary Constable Section, Block Watch, Crime Free Multi Housing and Youth Services. Their invaluable support relies on the efforts of volunteers and staff throughout the city. A full description of the services they provide can be found at www.burnaby.rcmp.ca

Auxiliary Constable Program:



Highlights - School Liaison

Members of the Burnaby School Liaison unit took part in several Literacy Week activities at a number of elementary schools in Burnaby during January. Our school liaison team were joined by the Officer-In-Charge of Burnaby Detachment, Chief Superintendent, Dave Critchley and Inspector Mike Labossiere at Kitchener Elementary school on Jan. 27 where they read to the kids. In supporting Literacy Week, each school liaison officer visits classrooms to read books to the elementary school children. It's also an opportunity to speak children about what it's like to be a police officer and how police officers are here to help people. The children enjoyed having a police officer in their classroom and the opportunity to ask questions about the policing profession. The Burnaby RCMP continues to forge strong bonds with the youth in our community and participating in events such as Literacy Week, helps to build a strong connection between school-aged kids and the police.

Crime Prevention Unit In partnership with members of the Drug Target Team, the CPU hosted their second Safe Community Series on February 18th at the Bonsor Recreation Complex. Members of the community learned how to recognize drug houses and grow operations, protect themselves and their neighbours and were given information on how to report drug related incidents.

Youth Services

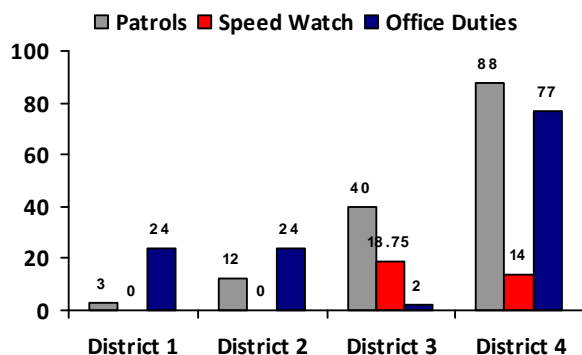
Highlights:

- A total of 7 youth have been referred during this reporting period, 5 to the Counselling Program and 1 to the Restorative Justice Program.
- The RFT Youth and Family Counsellor position posting has been put on hold due to possible restructuring of the job description.
- The Restorative Justice Coordinator continues to support Outlook Alternative school by facilitating restorative circles, where discussions on decision-making and future goals
- The 45th Retail Theft Circle was held this month, with youth, community members and RCMP attending.
- Sean Earle was recognized for his five-year contribution to the Restorative Justice Volunteer Program. Inspector Labossiere presented Sean with a certificate of appreciation in recognition of his dedication and contribution the Burnaby RCMP Restorative Justice program

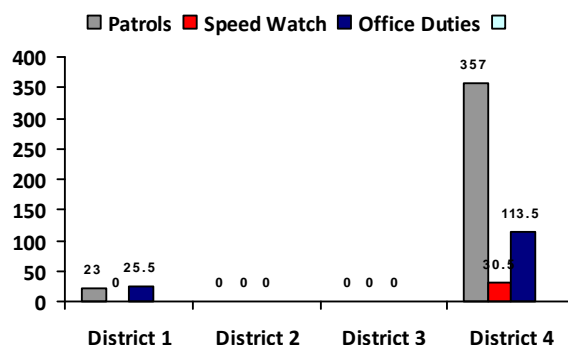
In February Victim Services held a meeting of our auxiliary caseworkers. Auxiliary caseworkers provide all after hours crisis intervention coverage, including holidays and weekday and weekend overnights. It is a challenge for our caseworkers to stay informed of the many changes in policy and personnel in the detachment, as well as keeping their crisis intervention skills sharp when they may only have a handful of shifts throughout the month, and may only be called out on some of those shifts. Our meetings and training events help keep them connected and able to provide this valuable service.

Volunteers are a fundamental component of our District Operations. They staff the front counter at each Community Police Office.

**Volunteer Hours by District
January 2015**



**Volunteer Hours by District
February 2015 Not Completed**



Detachment/Community
Events



Over 100 people attended the Burnaby Detachment's 2nd Annual Pink Shirt Day Barbeque which was held on Wednesday February 25th, 2015 to raise awareness against bullying.



C/Supt. Dave Critchley speaks on March 3, 2015 at the Vancouver Police Department about the conclusion of Project Tainted which was a joint RCMP/VPD investigation that successfully interdicted a large scale Fentanyl distribution ring. Firearms, drugs and money were seized as well as numerous people arrested.



Contact Us

Do you have questions or comments concerning this report?

Are you interested in volunteering or becoming more involved in your community's safety?

Contact us at any one of the Community Police Offices below, call our main line at (604) 294-7922 or explore our website at:

www.burnaby.rcmp.ca

Main Detachment

**Burnaby RCMP
6355 Deer Lake Avenue
Burnaby, BC V5G 2J2
(604) 294-7922**

