

**TRAFFIC SAFETY COMMITTEE**

*HIS WORSHIP, THE MAYOR  
AND COUNCILLORS*

**SUBJECT: 2016 LOCAL AREA SERVICE PROGRAM FOR SPEED HUMPS**

**RECOMMENDATIONS:**

1. THAT Council advance the requested speed humps, as discussed and recommended in this report, to the 2016 LASP process.
2. THAT Council send a copy of this report to the residents who requested speed humps as part of the 2016 LASP.

**REPORT**

The Traffic Safety Committee, at its meeting held on 2015 December 01, received and adopted the attached report reviewing applications for the 2016 speed hump program and recommending streets that should proceed to the Local Area Service Program (LASP) process.

Respectfully submitted,

Councillor P. McDonell  
Chair

Councillor P. Calendino  
Vice Chair

Councillor J. Wang  
Member

Copied to:	City Manager Deputy City Managers Director Engineering
------------	--

**TO:** CHAIR AND MEMBERS  
TRAFFIC SAFETY COMMITTEE

**DATE:** 2015 November 25

**FROM:** DIRECTOR ENGINEERING

**FILE:** 34500 01

**SUBJECT:** 2016 LOCAL AREA SERVICE PROGRAM FOR SPEED HUMPS

**PURPOSE:** To review applications for the 2016 speed hump program and recommend streets that should proceed to the Local Area Service Program (LASP) process.

---

**RECOMMENDATIONS:**

1. **THAT** The Committee recommend that Council advance the requested speed humps, as discussed and recommended in this report, to the 2016 LASP process.
2. **THAT** The Committee recommend that Council send a copy of this report to the residents who requested speed humps as part of the 2016 LASP.

**REPORT****1.0 BACKGROUND**

The Traffic Safety Committee annually reviews all requests for speed humps for inclusion in the Local Area Service Program (LASP). Over the course of 2015 City staff has responded to numerous inquiries from residents about the process for installing speed humps along their street. Of those, a total of 5 residents have expressed a desire to initiate the LASP process for installing speed humps in 2016.

**2.0 REVIEW OF REQUESTS**

A review of the 5 applications for the 2016 Speed Hump LASP was completed and most were found to meet the general guidelines of the program (local residential road, less than 8% grade, and requested by a registered property owner). Brief descriptions of the applications are provided below.

As part of the review, the Fire Department was consulted to ensure that the proposed speed humps would not adversely affect their emergency response time significantly. It should be noted that speed humps are only installed on local streets to limit the cumulative impact of speed humps on emergency response times. Local collectors and other higher order streets are not eligible for speed hump installations.

To: Traffic Safety Committee  
From: Director Engineering  
Re: 2016 LOCAL AREA SERVICE PROGRAM FOR  
SPEED HUMPS

2015 November 25..... Page 2

The Fire Department and Coast Mountain Bus Company have no objection to the 2016 program proposed.

## **2.1 18th Ave (2<sup>nd</sup> St - 4<sup>th</sup> St) (Exhibit 1)**

18th Ave between 2nd St and 4th St is fronted by single family homes on an 11m wide finished standard with concrete curb and gutter. This portion of 18th Ave is surrounded by other local streets with speed humps.

It is recommended that the requested LASP for speed humps proceed.

## **2.2 Parkcrest – Aubrey Neighbourhood (Exhibit 2)**

Requests for speed humps along the 2 following streets within the Parkcrest - Aubrey neighbourhood were received:

Union (Holdom – Howard)  
Springer (Union – Georgia)  
Springer (Georgia – Frances)

Union between Holdom and Howard is constructed to an 8.5m wide finished standard and is fronted by single family homes.

Springer (Union – Georgia) is constructed to an 11m wide finished standard and is fronted by single family homes.

It is recommended that the requested LASP for speed humps for the above two locations proceed.

Springer (Georgia – Frances) is a local residential street with a grade of about 10%. This exceeds the maximum 8% grade to be eligible for the speed hump program. Therefore, it is recommended that the requested LASP for speed humps for this block not proceed.

## **2.3 4300 Block Greta (Exhibit 3)**

The 4300 block of Greta St is fronted by single family homes and the road is constructed to an interim standard with 6m wide pavement and gravel shoulders. Installation of humps on this street may require the installation of concrete bull noses at the ends of the humps to prevent vehicles from driving around them.

It is recommended that the requested LASP for speed humps proceed.

To: Traffic Safety Committee  
From: Director Engineering  
Re: 2016 LOCAL AREA SERVICE PROGRAM FOR  
SPEED HUMPS

2015 November 25..... Page 3

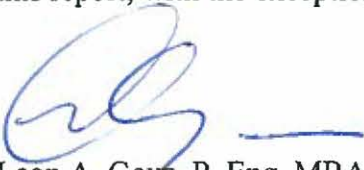
#### **2.4 Spruce (Boundary – Smith) (Exhibit 4)**

Spruce St between Boundary & Smith is fronted by single family homes and is constructed to an 8.5 m wide finished standard with concrete curb & gutter.

It is recommended that the requested LASP for speed humps proceed.

### **3.0 RECOMMENDATION**

Staff recommend that all of the above requested LASP for speed humps proceed as outlined in this report, with the exception of Springer Ave between Georgia St and Frances St.



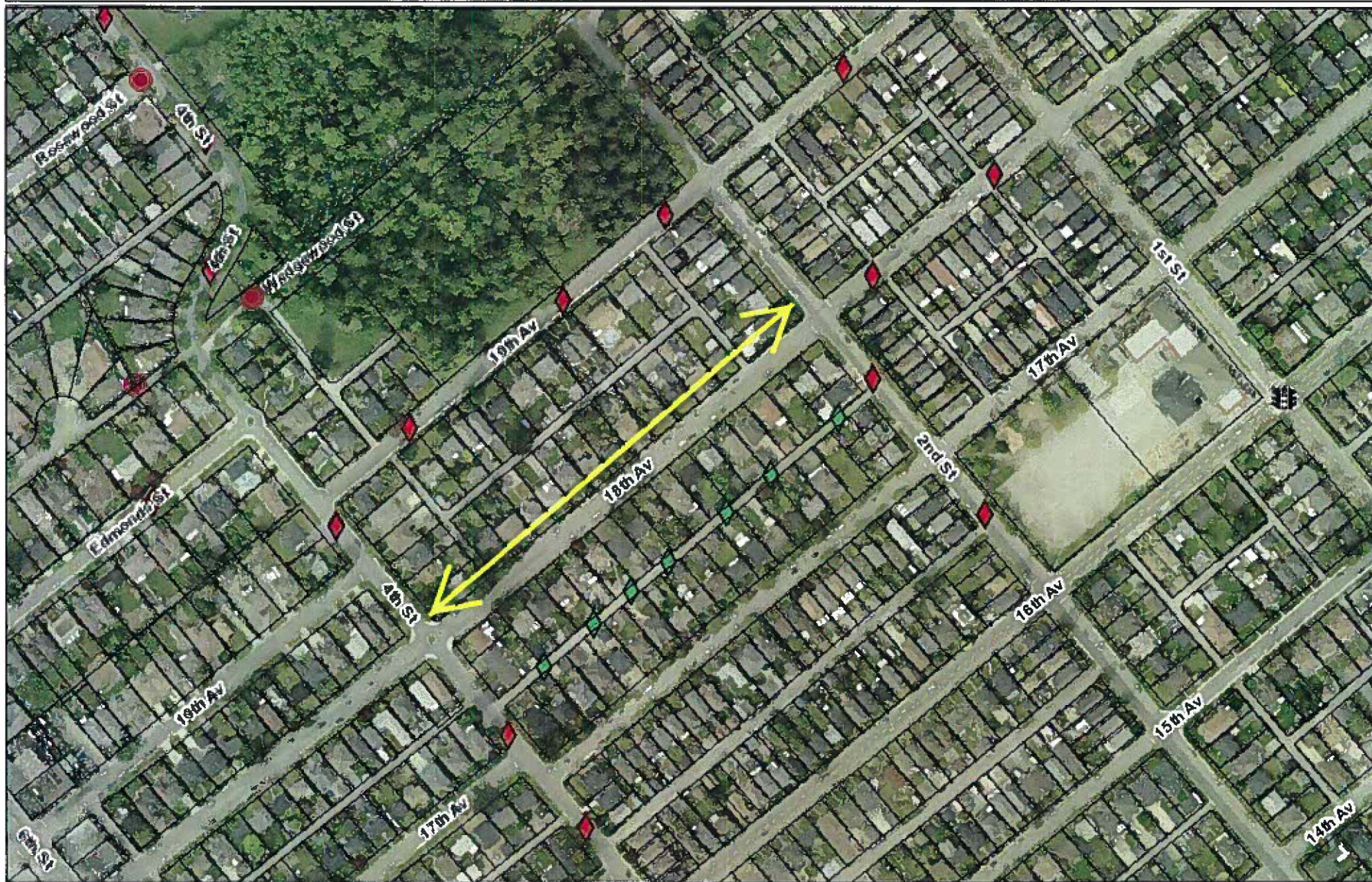
Leon A. Gous, P. Eng. MBA  
DIRECTOR ENGINEERING

SP/ac

Enclosures

Copied to: City Manager

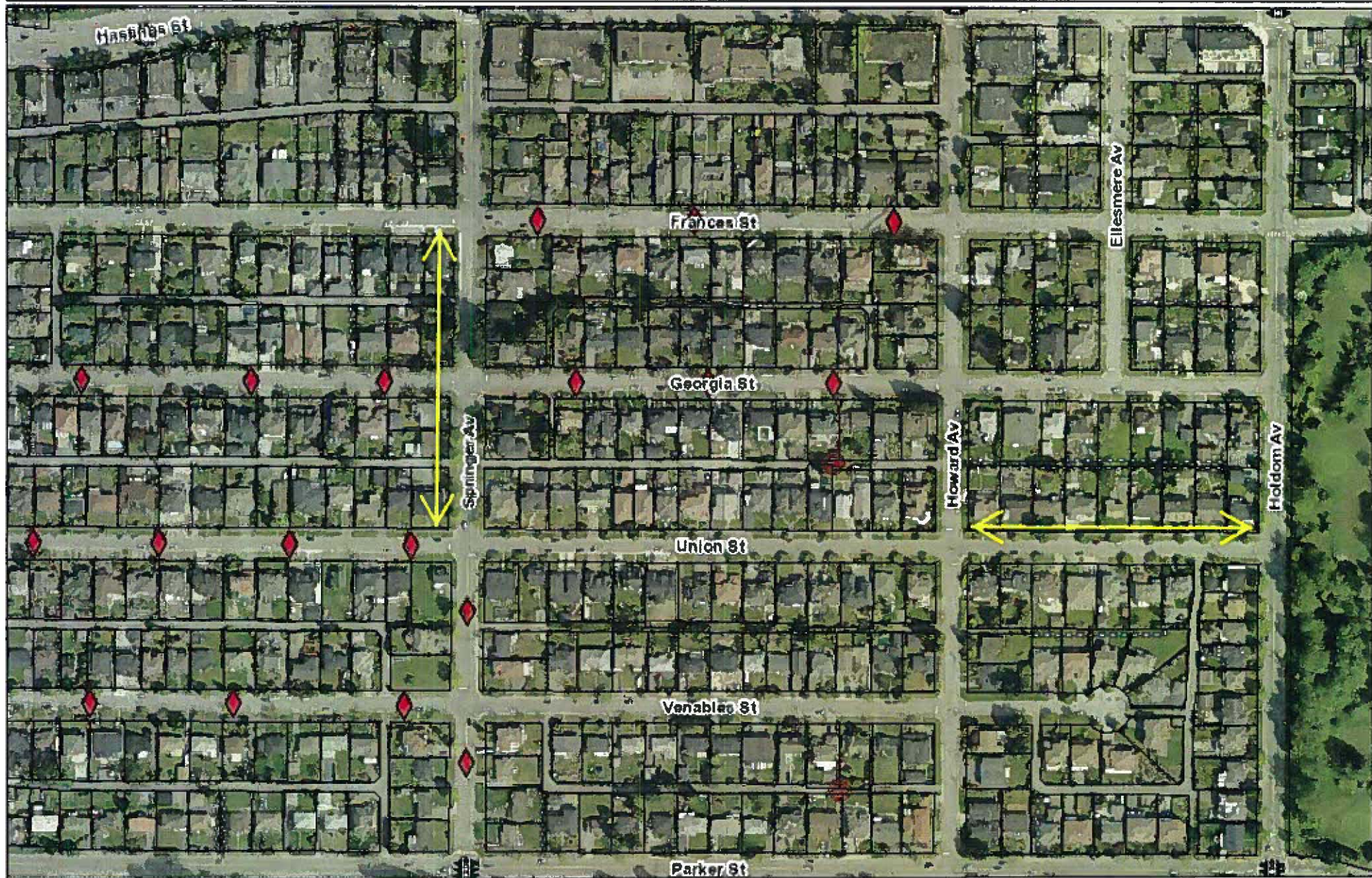




The information has been gathered and assembled on the City of Burnaby's computer systems. Data provided herein is derived from a number of sources with varying levels of accuracy. The City of Burnaby disclaims all responsibility for the accuracy or completeness of information contained herein.







The information has been gathered and assembled on the City of Burnaby's computer systems. Data provided herein is derived from a number of sources with varying levels of accuracy. The City of Burnaby disclaims all responsibility for the accuracy or completeness of information contained herein.



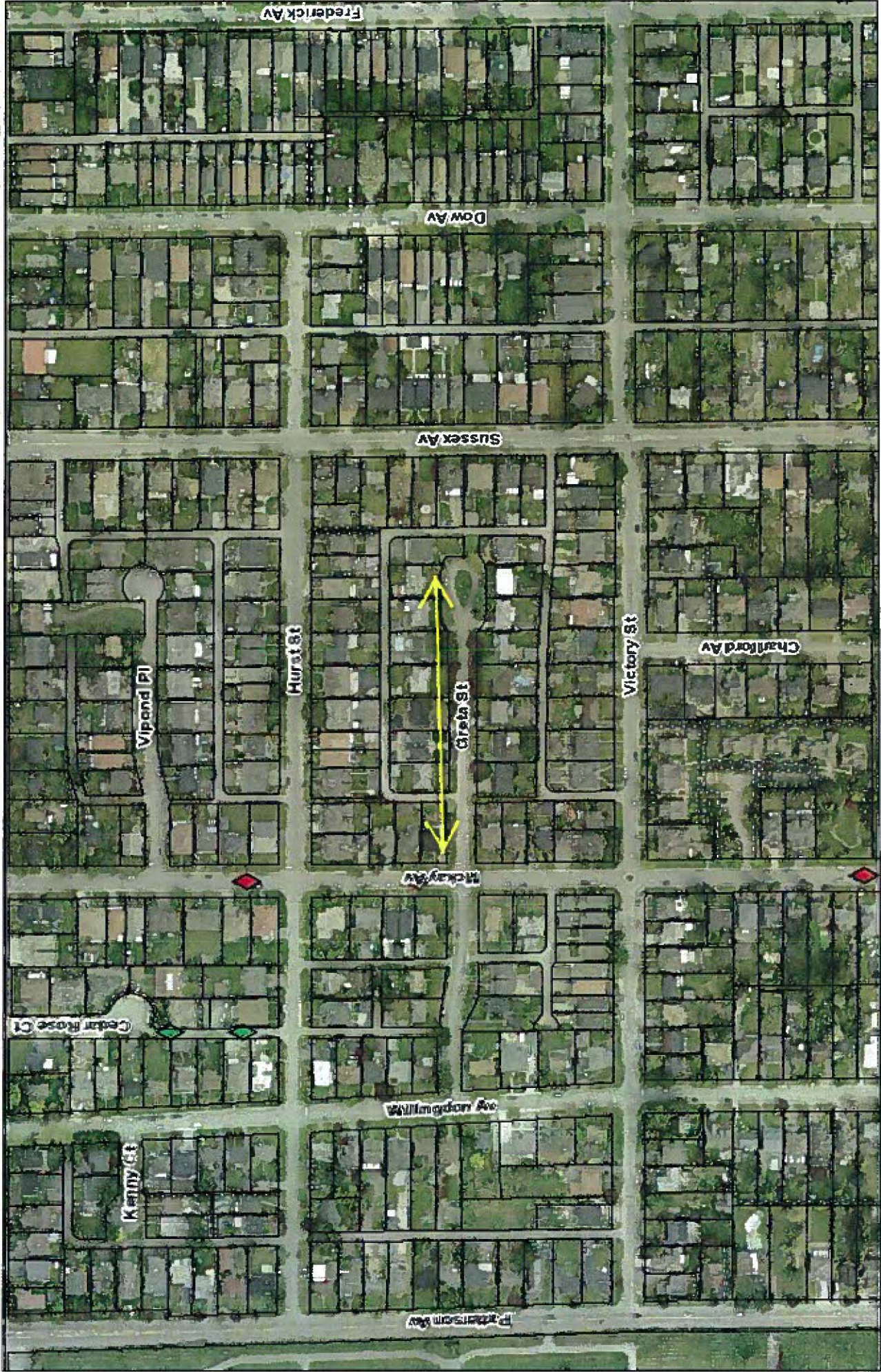




# Greta - 4300 Block

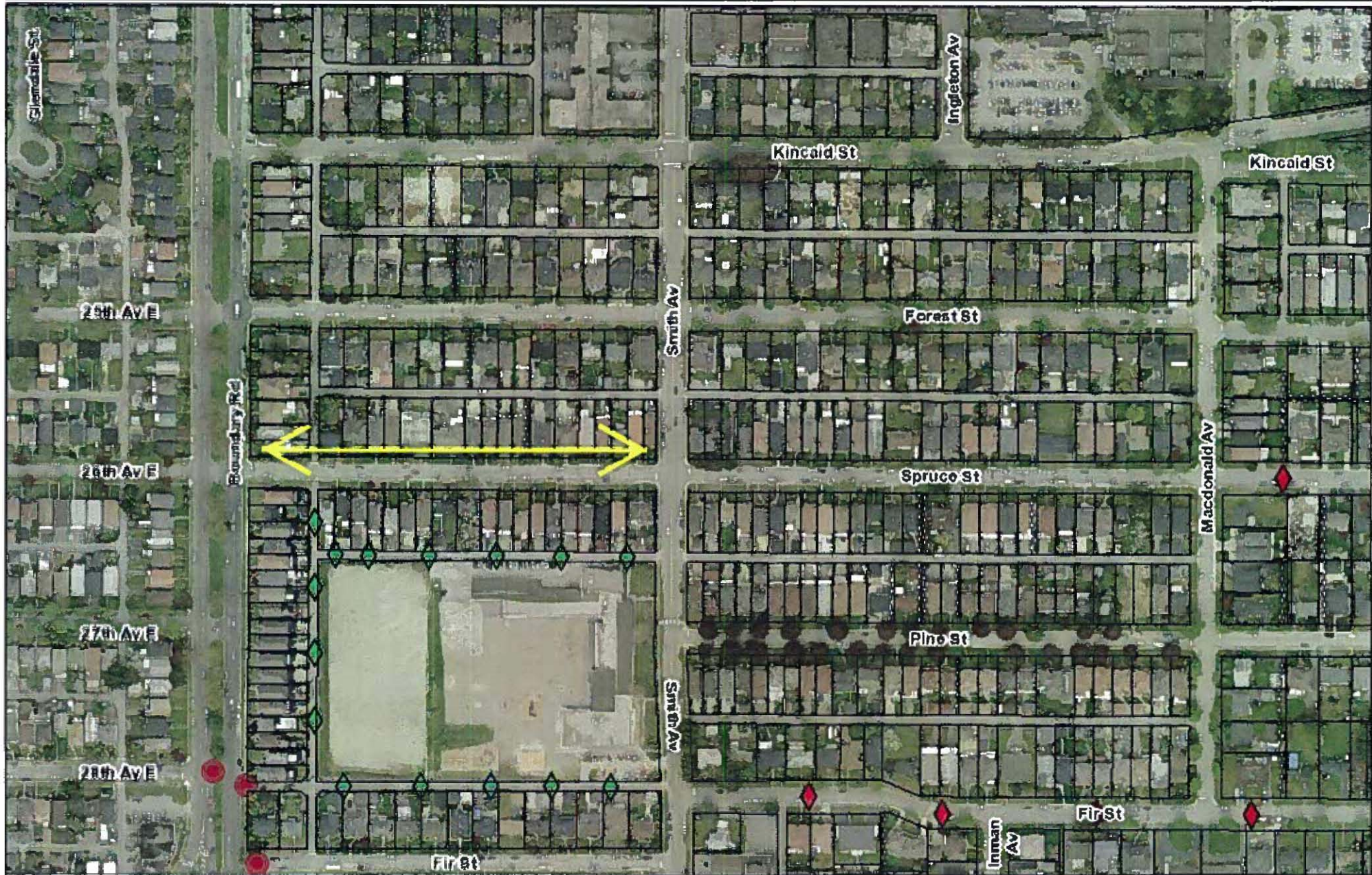
## EXHIBIT #3

1:3,221



The information has been gathered and assembled on the City of Burnaby's computer systems. Data provided herein is derived from a number of sources with varying levels of accuracy. The City of Burnaby disclaims all responsibility for the accuracy or completeness of information contained herein.





The information has been gathered and assembled on the City of Burnaby's computer systems. Data provided herein is derived from a number of sources with varying levels of accuracy. The City of Burnaby disclaims all responsibility for the accuracy or completeness of information contained herein.

