

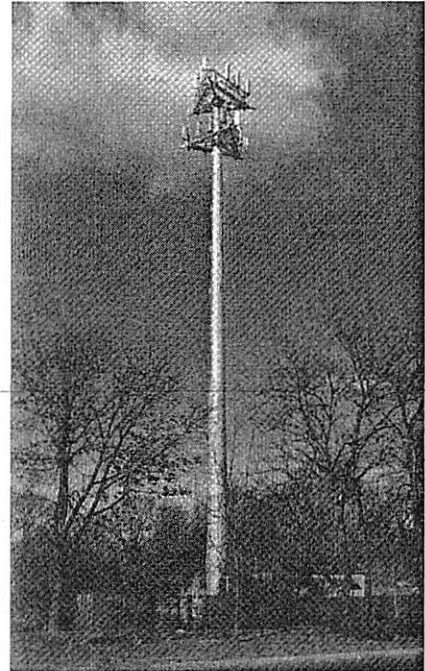
**The following item(s) of  
correspondence were received in  
opposition to Rezoning Reference #  
15-16.**

## RF Safety of Tower-Mounted Cellular Antennas

By Richard R. Strickland, RF Safety Solutions LLC

When the subject of installing a tower with cellular antennas or putting cellular antennas on existing structures such as water tanks or church steeples comes up, it often raises strong feelings. You just made a deal to lease space on your rooftop to a wireless company, and now you are having second thoughts as to what problems this might introduce. Somebody just noticed the antennas on the roof of the school—how dare they put children at risk!

Questions like this come up every day. With the information available on the Internet, everybody is quick to do some research. But putting it all together and making sense of it is far from easy. RF standards and regulations can be confusing. And applying this information to your particular situation is even more difficult.



### ***RF Safety Issues with Cellular Towers***

The major concern over exposure to RF energy is heating of the human body. Workers who climb cellular towers and get very close to cellular and other wireless services antennas must take care not to be exposed to excessive levels of RF energy, which is the reason that most companies require that workers who climb towers complete RF safety training. This is where I come in. When I explain the danger areas around such antennas to my students, I always use this rule of thumb:

"You are perfectly safe and can remain in any area providing that the bottom of the antenna is at least 2 feet above your head." When you consider how high up the antennas are on a cellular tower, it is easy to see why I can state categorically that there is nothing to worry about in terms of RF energy at ground level.

Cellular antennas have extremely little energy directed downward—that would simply be a waste of energy. Once the energy is just a few feet from the antenna, it begins to spread out in two dimensions, so the energy level drops off dramatically with distance. The energy level 100 feet from an antenna is only 1 percent of the energy level 10 feet from the antenna.

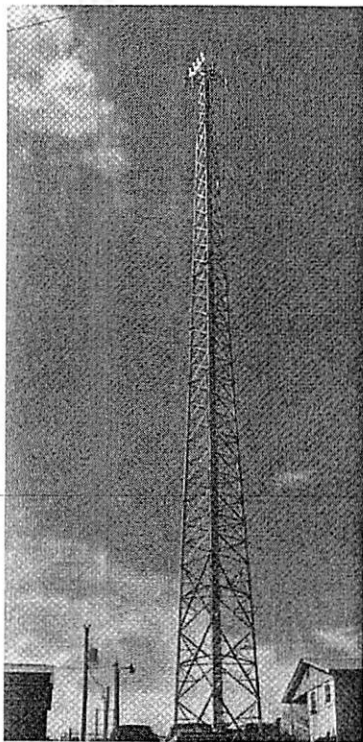
### ***RF Energy and the Human Body***

Much of the confusion and concern over exposure to RF energy comes from confusion over the two forms of radiation that people might encounter. I hear it in the classes that I teach and make a point to explain the difference in every class, even if the students are all professional engineers.

Think Hiroshima, Nagasaki, Chernobyl, Three Mile Island, X-rays, and Uranium, and everybody gets concerned. Radioactive materials and X-rays generate what is known as **ionizing radiation**, which can be very dangerous. *Ionizing radiation* kills or mutates human cells, its effects are cumulative and there is no practical minimum. So, continuous exposure to low levels of *ionizing radiation* can eventually lead to serious health problems. Just getting an X-ray kills or mutates millions of cells in your body. But your body will repair itself within two weeks, providing there is no additional exposure. However, the person giving you the X-ray has to be very careful to get behind the lead in the door so that they don't get exposed. Unlike you, their exposure would be repetitive and cause cumulative effects.

In contrast, radio frequency energy and the energy from most of the light frequencies are forms of **non-ionizing radiation**. This form of energy can heat tissue when it is concentrated enough and is the principle behind the common microwave oven. But exposure to very tiny amounts of RF energy has much less impact on you than if the temperature in the room you are in were to change by a small fraction of a degree. Problems occur with exposure to RF energy only when it is so concentrated that your body has a problem dealing with the excess heat. The effects are very similar to overexertion.

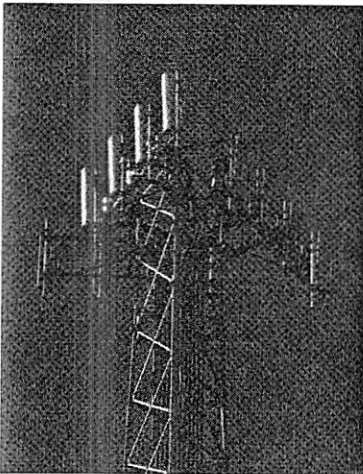
## ***RF Effects from Cellular Phones versus Tower Antennas***



People who do some reading on the subject come across concerns about exposure to cellular energy, and the tendency is to equate this as a concern over the antennas on the tower. The reality is that if there is any RF safety concern related to cellular phone systems, it is with using the phone itself, not with the energy from the antennas on the tower. The only exception is if you are a worker on the tower very close to one or more of the antennas.

Here are two statements that apply to every tower site with cellular antennas:

1. If you hold a cellular phone near your head, as opposed to texting, using a headset, or a hands-free device, you will absorb an absolute minimum of 100 times more RF energy than the maximum you could absorb from any tower-mounted cellular antennas, assuming you are on the ground.
2. If cellular reception is poor in your area, the installation of a cellular tower or cellular antennas on a water tank or in a church steeple will dramatically reduce the RF exposure of anyone that uses a cellular phone in a handheld mode.



Consider a typical case where it is proposed for a church to obtain some revenue by renting space in the church steeple to a cellular provider. But there is a school in the church, and many people get concerned about putting their children at risk. The fact is that by adding the additional antennas, the cell phones in the area will dramatically reduce their operating power level. Cell phones are programmed to use the minimum amount of power needed to make a good connection. So, when the signal is strong (lots of bars) the phone transmits at no more than 10 percent of the power that it uses when the signal is weak. And when the connection is poor, people tend to hold the phone tightly to their heads so that they can hear better, which further increases their exposure by another factor of 10. So, a person holding a phone tight to his or her head with a poor connection will absorb at least 100 times more RF energy than when the phone is held about an inch away and the signal is strong. Under these worst-case conditions, the amount of RF energy absorbed will be a minimum of 10,000 times higher than you could possibly get from the antennas high up on the tower or in the steeple.

The other point is that children tend to not use headsets. This is the reason that there are significant restrictions on the use of cellular phones by children in Great Britain. One study showed that children under 20 who use cellular phones are five times more likely to get brain cancer than children who do not use cellular phones.

So, when it is proposed to add a cellular tower near a school, consider the safety of your children and **vote to approve!**

### ***Qualifications and Background***

I have 40 years experience in the electronics industry, a BA in Physics, and an MBA. The last 16 years have been focused entirely on radio frequency (RF) radiation safety. I began work as an independent consultant about 10 years ago, working in many different industries, as well as with the government and the military. I have never worked for any of the companies that operate cellular phone services, but I have worked with many of the smaller companies that build and maintain these systems. My work with these companies is primarily related to providing training for the personnel who climb the towers and work in close proximity to the cellular and other wireless services antennas such as those used for fire, police, and emergency services. Sometimes I am asked to independently evaluate the RF energy levels on sites such as building roofs or on the ground near towers. More information on my background and the subject of RF radiation safety is available at [www.RFSafetySolutions.com](http://www.RFSafetySolutions.com).

## Objection Letter to Rezoning

City of Burnaby  
Planning Department

Wai Sum Yu  
2929 Coventry Place  
Burnaby, BC  
V5A 3P8  
April 20, 2016

APR 25 2016

Corresp. #.....711988

**RE: OPPOSITION TO ZONING CHANGE FOR BURNABY ZONING BYLAW 1965,  
AMENDMENT BYLAW NO. 13, 2016, BYLAW NO. 13589, REZONING REFERENCE  
#15-16**

Dear Burnaby City Council:

I am writing this letter in regards to the public hearing by your council on April 26 2016. Your council intends to pass a bylaw to amend Rezoning Reference #15-16. I would like to object strongly against such inappropriate alteration, because this change will lead negative impacts on health and safety, property values, and aesthetics to residents in our community.

**My principal objection reason is the zoning change will bring significant health and safety risks to our neighborhood**

As we all know, the radiation from telecom tower/ antenna causes long-term health impacts to human race. Numerous studies have revealed that if people live within a quarter mile of a cell phone tower, the cell phone tower or antenna could put your health at significant risk. According to the link below, the proportion of newly developed cancer cases was three times higher among those who had lived during the past ten years at a distance of up to 400m (about 1300 feet) from the cellular transmitter site, compared to those living further away. Looking at only the first 5 years, there was no significant increased risk of getting cancer in the inner area. But after 5 years, the odds ratio for getting cancer was 3.38 in the inner area compared to the outer area. Breast cancer topped the list, with an average age of 50.8 year compared with 69.9 years in the outer area, but cancers of the prostate, pancreas, bowel, skin melanoma, lung and blood cancer were all increased. However, based on the Section 3.4.3 of your council report subjected Rezoning Reference #15-16, the proposed telecom tower with antennas are planned to be located approximately 31m from the neighboring single family residential property to the south, and 23.4m from the neighboring single family residential property to the east. Such distances are much less than the above mentioned safe radius of 400m.

<http://www.freehelpforcancer.com/cancers/cell-phone-towers-how-far-is-safe>

As well, the proposed telecom tower/antenna will be 10.7m of height. It has only 3-4m offset from the skytrain rail track, once it collapses by wind or other forces not only may it cause serious injuries to employees working in the five restaurants and stores in the existing building and their customers, but also may result the shutdown of the skytrain as well as more serious tragedies.

**My second objection reason is the zoning change will reduce neighborhood property values.**

The proposed rezoning area is surrounded by residential R1 zone. It is common sense that the values of the houses with health and safety concerns are always lower than the market value for comparable properties not subject to the influence, and this impact will be significant. As mentioned above, the proposed rezoning will cause potential health and safety risks; as a result this will also cause negative impact on future sales price for surrounding residential properties.

Also, from the aesthetic point of view, the visual unattractiveness can result with the decline in value of the surrounding properties too, since no residential owners like a eyesore high tower (10.7m) standing in front of their windows (even with parapets).

**My third objection reason is the zoning change is such rezoning does not comply with the Burnaby Official Community Plan**

The Commercial Policy Framework of the Burnaby Official Community Plan (OCP) indicates that the intersection of Lougheed Highway and Bainbridge Avenue is intended for future Urban Village Centre development, which includes local commercial uses to accommodate convenient commercial facilities and services that meet the day to day shopping needs of the surrounding residential neighborhoods. However, this rezoning intends to introduce non-shopping purpose telecommunication equipments/ facilities into this area.

In a word, if it has to be relocated, please advise Telus to relocate the telecom tower to a safe place with minimum of 400m away from residential zones. Zoning requirements were put in place for a reason, and should not be tossed out for the benefit of a single entity over the objection of the human race and neighborhood residents. Please highly value the residency environment and provide a healthy and safe living condition for your tax payers, who do care and love the City of Burnaby.

Sincerely yours,

A handwritten signature in black ink, appearing to read 'Wai Sum Yu', written in a cursive style.

Wai Sum Yu

(The house-owner of 2929 Coventry Place, Burnaby, BC)

## Objection Letter to Rezoning

Name: *FRANK & Louise Muroccco*

Address: *2985 COVENTRY Pl. - Burnaby - BC V5A 3P8*

Date: *April 22 2016*

**RE: OPPOSITION TO ZONING CHANGE FOR BURNABY ZONING BYLAW 1965, AMENDMENT BYLAW NO. 13, 2016, BYLAW NO. 13589, REZONING REFERENCE #15-16**

Dear Burnaby City Council:

I am writing this letter in regards to the public hearing by your council on April 26 2016. Your council intends to pass a bylaw to amend Rezoning Reference #15-16. I would like to object strongly against such inappropriate alteration, because this change will lead negative impacts on health and safety, property values, and aesthetics to residents in our community.

### **My principal objection reason is the zoning change will bring significant health and safety risks to our neighborhood**

As we all know, the radiation from telecom tower/ antenna causes long-term health impacts to human race. Numerous studies have revealed that if people live within a quarter mile of a cell phone tower, the cell phone tower or antenna could put your health at significant risk. According to the link below, the proportion of newly developed cancer cases was three times higher among those who had lived during the past ten years at a distance of up to 400m (about 1300 feet) from the cellular transmitter site, compared to those living further away. Looking at only the first 5 years, there was no significant increased risk of getting cancer in the inner area. But after 5 years, the odds ratio for getting cancer was 3.38 in the inner area compared to the outer area. Breast cancer topped the list, with an average age of 50.8 year compared with 69.9 years in the outer area, but cancers of the prostate, pancreas, bowel, skin melanoma, lung and blood cancer were all increased. However, based on the Section 3.4.3 of your council report subjected Rezoning Reference #15-16, the proposed telecom tower with antennas are planned to be located approximately 31m from the neighboring single family residential property to the south, and 23.4m from the neighboring single family residential property to the east. Such distances are much less than the above mentioned safe radius of 400m.

<http://www.freehelpforcancer.com/cancers/cell-phone-towers-how-far-is-safe>

As well, the proposed telecom tower/antenna will be 10.7m of height. It has only 3-4m offset from the skytrain rail track, once it collapses by wind or other forces not only may it cause serious injuries to employees working in the five restaurants and stores in the existing building

(The house-owner of 2985 COVENTRY Pl. , Burnaby, BC)

## Objection Letter to Rezoning

Name: JEFF + DOREEN UNRAU  
Address: 2962 BAINBRIDGE AVENUE  
BURNABY, B.C.  
V5A-2S8  
Date: APRIL 21 /16

**RE: OPPOSITION TO ZONING CHANGE FOR BURNABY ZONING BYLAW 1965, AMENDMENT BYLAW NO. 13, 2016, BYLAW NO. 13589, REZONING REFERENCE #15-16**

Dear Burnaby City Council:

I am writing this letter in regards to the public hearing by your council on April 26 2016. Your council intends to pass a bylaw to amend Rezoning Reference #15-16. I would like to object strongly against such inappropriate alteration, because this change will lead negative impacts on health and safety, property values, and aesthetics to residents in our community.

### **My principal objection reason is the zoning change will bring significant health and safety risks to our neighborhood**

As we all know, the radiation from telecom tower/ antenna causes long-term health impacts to human race. Numerous studies have revealed that if people live within a quarter mile of a cell phone tower, the cell phone tower or antenna could put your health at significant risk. According to the link below, the proportion of newly developed cancer cases was three times higher among those who had lived during the past ten years at a distance of up to 400m (about 1300 feet) from the cellular transmitter site, compared to those living further away. Looking at only the first 5 years, there was no significant increased risk of getting cancer in the inner area. But after 5 years, the odds ratio for getting cancer was 3.38 in the inner area compared to the outer area. Breast cancer topped the list, with an average age of 50.8 year compared with 69.9 years in the outer area, but cancers of the prostate, pancreas, bowel, skin melanoma, lung and blood cancer were all increased. However, based on the Section 3.4.3 of your council report subjected Rezoning Reference #15-16, the proposed telecom tower with antennas are planned to be located approximately 31m from the neighboring single family residential property to the south, and 23.4m from the neighboring single family residential property to the east. Such distances are much less than the above mentioned safe radius of 400m.

<http://www.freehelpforcancer.com/cancers/cell-phone-towers-how-far-is-safe>

As well, the proposed telecom tower/antenna will be 10.7m of height. It has only 3-4m offset from the skytrain rail track, once it collapses by wind or other forces not only may it cause serious injuries to employees working in the five restaurants and stores in the existing building

and their customers, but also may result the shutdown of the skytrain as well as more serious tragedies.

**My second objection reason is the zoning change will reduce neighborhood property values.**

The proposed rezoning area is surrounded by residential R1 zone. It is common sense that the values of the houses with health and safety concerns are always lower than the market value for comparable properties not subject to the influence, and this impact will be significant. As mentioned above, the proposed rezoning will cause potential health and safety risks; as a result this will also cause negative impact on future sales price for surrounding residential properties.

Also, from the aesthetic point of view, the visual unattractiveness can result with the decline in value of the surrounding properties too, since no residential owners like a eyesore high tower (10.7m) standing in front of their windows (even with parapets).

**My third objection reason is the zoning change is such rezoning does not comply with the Burnaby Official Community Plan**

The Commercial Policy Framework of the Burnaby Official Community Plan (OCP) indicates that the intersection of Lougheed Highway and Bainbridge Avenue is intended for future Urban Village Centre development, which includes local commercial uses to accommodate convenient commercial facilities and services that meet the day to day shopping needs of the surrounding residential neighborhoods. However, this rezoning intends to introduce non-shopping purpose telecommunication equipments/ facilities into this area.

In a word, if it has to be relocated, please advise Telus to relocate the telecom tower to a safe place with minimum of 400m away from residential zones. Zoning requirements were put in place for a reason, and should not be tossed out for the benefit of a single entity over the objection of the human race and neighborhood residents. Please highly value the residency environment and provide a healthy and safe living condition for your tax payers, who do care and love the City of Burnaby.

Sincerely yours,

Name: JEFF + DORCEN UNRAU

(The house-owner of 2962 BAINBRIDGE AVE, Burnaby, BC)

Unrau

## Objection Letter to Rezoning

Name: Young Keun Lee  
Address: 2932 Bainbridge Ave  
Burnaby B.C  
V5A 2S8  
Date: April 21, 2016

**RE: OPPOSITION TO ZONING CHANGE FOR BURNABY ZONING BYLAW 1965, AMENDMENT BYLAW NO. 13, 2016, BYLAW NO. 13589, REZONING REFERENCE #15-16**

Dear Burnaby City Council:

I am writing this letter in regards to the public hearing by your council on April 26 2016. Your council intends to pass a bylaw to amend Rezoning Reference #15-16. I would like to object strongly against such inappropriate alteration, because this change will lead negative impacts on health and safety, property values, and aesthetics to residents in our community.

### **My principal objection reason is the zoning change will bring significant health and safety risks to our neighborhood**

As we all know, the radiation from telecom tower/ antenna causes long-term health impacts to human race. Numerous studies have revealed that if people live within a quarter mile of a cell phone tower, the cell phone tower or antenna could put your health at significant risk. According to the link below, the proportion of newly developed cancer cases was three times higher among those who had lived during the past ten years at a distance of up to 400m (about 1300 feet) from the cellular transmitter site, compared to those living further away. Looking at only the first 5 years, there was no significant increased risk of getting cancer in the inner area. But after 5 years, the odds ratio for getting cancer was 3.38 in the inner area compared to the outer area. Breast cancer topped the list, with an average age of 50.8 year compared with 69.9 years in the outer area, but cancers of the prostate, pancreas, bowel, skin melanoma, lung and blood cancer were all increased. However, based on the Section 3.4.3 of your council report subjected Rezoning Reference #15-16, the proposed telecom tower with antennas are planned to be located approximately 31m from the neighboring single family residential property to the south, and 23.4m from the neighboring single family residential property to the east. Such distances are much less than the above mentioned safe radius of 400m.

<http://www.freehelpforcancer.com/cancers/cell-phone-towers-how-far-is-safe>

As well, the proposed telecom tower/antenna will be 10.7m of height. It has only 3-4m offset from the skytrain rail track, once it collapses by wind or other forces not only may it cause serious injuries to employees working in the five restaurants and stores in the existing building

and their customers, but also may result the shutdown of the skytrain as well as more serious tragedies.

**My second objection reason is the zoning change will reduce neighborhood property values.**

The proposed rezoning area is surrounded by residential R1 zone. It is common sense that the values of the houses with health and safety concerns are always lower than the market value for comparable properties not subject to the influence, and this impact will be significant. As mentioned above, the proposed rezoning will cause potential health and safety risks; as a result this will also cause negative impact on future sales price for surrounding residential properties.


Also, from the aesthetic point of view, the visual unattractiveness can result with the decline in value of the surrounding properties too, since no residential owners like a eyesore high tower (10.7m) standing in front of their windows (even with parapets).

**My third objection reason is the zoning change is such rezoning does not comply with the Burnaby Official Community Plan**

The Commercial Policy Framework of the Burnaby Official Community Plan (OCP) indicates that the intersection of Lougheed Highway and Bainbridge Avenue is intended for future Urban Village Centre development, which includes local commercial uses to accommodate convenient commercial facilities and services that meet the day to day shopping needs of the surrounding residential neighborhoods. However, this rezoning intends to introduce non-shopping purpose telecommunication equipments/ facilities into this area.

In a word, if it has to be relocated, please advise Telus to relocate the telecom tower to a safe place with minimum of 400m away from residential zones. Zoning requirements were put in place for a reason, and should not be tossed out for the benefit of a single entity over the objection of the human race and neighborhood residents. Please highly value the residency environment and provide a healthy and safe living condition for your tax payers, who do care and love the City of Burnaby.

Sincerely yours,

Name: Young Kevin Lee  
(The house-owner of  Burnaby, BC)

## **Objection Letter to Rezoning**

Kai Ji  
2971 Coventry Place  
Burnaby, BC  
V5A 3P8  
April 20, 2016

**RE: OPPOSITION TO ZONING CHANGE FOR BURNABY ZONING BYLAW 1965, AMENDMENT BYLAW NO. 13, 2016, BYLAW NO. 13589, REZONING REFERENCE #15-16**

Dear Burnaby City Council:

I am writing this letter in regards to the public hearing by your council on April 26 2016. Your council intends to pass a bylaw to amend Rezoning Reference #15-16. I would like to object strongly against such inappropriate alteration, because this change will lead negative impacts on health and safety, property values, and aesthetics to residents in our community.

**My principal objection reason is the zoning change will bring significant health and safety risks to our neighborhood**

As we all know, the radiation from telecom tower/ antenna causes long-term health impacts to human race. Numerous studies have revealed that if people live within a quarter mile of a cell phone tower, the cell phone tower or antenna could put your health at significant risk. According to the link below, the proportion of newly developed cancer cases was three times higher among those who had lived during the past ten years at a distance of up to 400m (about 1300 feet) from the cellular transmitter site, compared to those living further away. Looking at only the first 5 years, there was no significant increased risk of getting cancer in the inner area. But after 5 years, the odds ratio for getting cancer was 3.38 in the inner area compared to the outer area. Breast cancer topped the list, with an average age of 50.8 year compared with 69.9 years in the outer area, but cancers of the prostate, pancreas, bowel, skin melanoma, lung and blood cancer were all increased. However, based on the Section 3.4.3 of your council report subjected Rezoning Reference #15-16, the proposed telecom tower with antennas are planned to be located approximately 31m from the neighboring single family residential property to the south, and 23.4m from the neighboring single family residential property to the east. Such distances are much less than the above mentioned safe radius of 400m.

<http://www.freehelpforcancer.com/cancers/cell-phone-towers-how-far-is-safe>

As well, the proposed telecom tower/antenna will be 10.7m of height. It has only 3-4m offset from the skytrain rail track, once it collapses by wind or other forces not only may it cause serious injuries to employees working in the five restaurants and stores in the existing building and their customers, but also may result the shutdown of the skytrain as well as more serious tragedies.

**My second objection reason is the zoning change will reduce neighborhood property values.**

The proposed rezoning area is surrounded by residential R1 zone. It is common sense that the values of the houses with health and safety concerns are always lower than the market value for comparable properties not subject to the influence, and this impact will be significant. As mentioned above, the proposed rezoning will cause potential health and safety risks; as a result this will also cause negative impact on future sales price for surrounding residential properties.

Also, from the aesthetic point of view, the visual unattractiveness can result with the decline in value of the surrounding properties too, since no residential owners like a eyesore high tower (10.7m) standing in front of their windows (even with parapets).

**My third objection reason is the zoning change is such rezoning does not comply with the Burnaby Official Community Plan**

The Commercial Policy Framework of the Burnaby Official Community Plan (OCP) indicates that the intersection of Lougheed Highway and Bainbridge Avenue is intended for future Urban Village Centre development, which includes local commercial uses to accommodate convenient commercial facilities and services that meet the day to day shopping needs of the surrounding residential neighborhoods. However, this rezoning intends to introduce non-shopping purpose telecommunication equipments/ facilities into this area.

In a word, if it has to be relocated, please advise Telus to relocate the telecom tower to a safe place with minimum of 400m away from residential zones. Zoning requirements were put in place for a reason, and should not be tossed out for the benefit of a single entity over the objection of the human race and neighborhood residents. Please highly value the residency environment and provide a healthy and safe living condition for your tax payers, who do care and love the City of Burnaby.

Sincerely yours,



Kai Ji

(The house-owner of 2971 Coventry Place, Burnaby, BC)

## Objection Letter to Rezoning

Name: LEWIS S.L. CHOI

Address: 2986 COVENTRY PLACE  
BURNABY, B.C. V5A 3P8

Date: 22 April 2016

**RE: OPPOSITION TO ZONING CHANGE FOR BURNABY ZONING BYLAW 1965, AMENDMENT BYLAW NO. 13, 2016, BYLAW NO. 13589, REZONING REFERENCE #15-16**

Dear Burnaby City Council:

I am writing this letter in regards to the public hearing by your council on April 26 2016. Your council intends to pass a bylaw to amend Rezoning Reference #15-16. I would like to object strongly against such inappropriate alteration, because this change will lead negative impacts on health and safety, property values, and aesthetics to residents in our community.

### **My principal objection reason is the zoning change will bring significant health and safety risks to our neighborhood**

As we all know, the radiation from telecom tower/ antenna causes long-term health impacts to human race. Numerous studies have revealed that if people live within a quarter mile of a cell phone tower, the cell phone tower or antenna could put your health at significant risk. According to the link below, the proportion of newly developed cancer cases was three times higher among those who had lived during the past ten years at a distance of up to 400m (about 1300 feet) from the cellular transmitter site, compared to those living further away. Looking at only the first 5 years, there was no significant increased risk of getting cancer in the inner area. But after 5 years, the odds ratio for getting cancer was 3.38 in the inner area compared to the outer area. Breast cancer topped the list, with an average age of 50.8 year compared with 69.9 years in the outer area, but cancers of the prostate, pancreas, bowel, skin melanoma, lung and blood cancer were all increased. However, based on the Section 3.4.3 of your council report subjected Rezoning Reference #15-16, the proposed telecom tower with antennas are planned to be located approximately 31m from the neighboring single family residential property to the south, and 23.4m from the neighboring single family residential property to the east. Such distances are much less than the above mentioned safe radius of 400m.

<http://www.freehelpforcancer.com/cancers/cell-phone-towers-how-far-is-safe>

As well, the proposed telecom tower/antenna will be 10.7m of height. It has only 3-4m offset from the skytrain rail track, once it collapses by wind or other forces not only may it cause serious injuries to employees working in the five restaurants and stores in the existing building

and their customers, but also may result the shutdown of the skytrain as well as more serious tragedies.

**My second objection reason is the zoning change will reduce neighborhood property values.**

The proposed rezoning area is surrounded by residential R1 zone. It is common sense that the values of the houses with health and safety concerns are always lower than the market value for comparable properties not subject to the influence, and this impact will be significant. As mentioned above, the proposed rezoning will cause potential health and safety risks; as a result this will also cause negative impact on future sales price for surrounding residential properties.

Also, from the aesthetic point of view, the visual unattractiveness can result with the decline in value of the surrounding properties too, since no residential owners like a eyesore high tower (10.7m) standing in front of their windows (even with parapets).

**My third objection reason is the zoning change is such rezoning does not comply with the Burnaby Official Community Plan**

The Commercial Policy Framework of the Burnaby Official Community Plan (OCP) indicates that the intersection of Lougheed Highway and Bainbridge Avenue is intended for future Urban Village Centre development, which includes local commercial uses to accommodate convenient commercial facilities and services that meet the day to day shopping needs of the surrounding residential neighborhoods. However, this rezoning intends to introduce non-shopping purpose telecommunication equipments/ facilities into this area.

In a word, if it has to be relocated, please advise Telus to relocate the telecom tower to a safe place with minimum of 400m away from residential zones. Zoning requirements were put in place for a reason, and should not be tossed out for the benefit of a single entity over the objection of the human race and neighborhood residents. Please highly value the residency environment and provide a healthy and safe living condition for your tax payers, who do care and love the City of Burnaby.

Sincerely yours,



Name: LEWIS S.L. CHOI

(The house-owner of 2986 COVENTRY PLACE , Burnaby, BC)

## Objection Letter to Rezoning

Name: UMBERTO DENTE  
Address: 2950 COVENTRY PLACE

Date: APRIL 22 2016

**RE: OPPOSITION TO ZONING CHANGE FOR BURNABY ZONING BYLAW 1965, AMENDMENT BYLAW NO. 13, 2016, BYLAW NO. 13589, REZONING REFERENCE #15-16**

Dear Burnaby City Council:

I am writing this letter in regards to the public hearing by your council on April 26 2016. Your council intends to pass a bylaw to amend Rezoning Reference #15-16. I would like to object strongly against such inappropriate alteration, because this change will lead negative impacts on health and safety, property values, and aesthetics to residents in our community.

**My principal objection reason is the zoning change will bring significant health and safety risks to our neighborhood**

As we all know, the radiation from telecom tower/ antenna causes long-term health impacts to human race. Numerous studies have revealed that if people live within a quarter mile of a cell phone tower, the cell phone tower or antenna could put your health at significant risk. According to the link below, the proportion of newly developed cancer cases was three times higher among those who had lived during the past ten years at a distance of up to 400m (about 1300 feet) from the cellular transmitter site, compared to those living further away. Looking at only the first 5 years, there was no significant increased risk of getting cancer in the inner area. But after 5 years, the odds ratio for getting cancer was 3.38 in the inner area compared to the outer area. Breast cancer topped the list, with an average age of 50.8 year compared with 69.9 years in the outer area, but cancers of the prostate, pancreas, bowel, skin melanoma, lung and blood cancer were all increased. However, based on the Section 3.4.3 of your council report subjected Rezoning Reference #15-16, the proposed telecom tower with antennas are planned to be located approximately 31m from the neighboring single family residential property to the south, and 23.4m from the neighboring single family residential property to the east. Such distances are much less than the above mentioned safe radius of 400m.

<http://www.freehelpforcancer.com/cancers/cell-phone-towers-how-far-is-safe>

As well, the proposed telecom tower/antenna will be 10.7m of height. It has only 3-4m offset from the skytrain rail track, once it collapses by wind or other forces not only may it cause serious injuries to employees working in the five restaurants and stores in the existing building

and their customers, but also may result the shutdown of the skytrain as well as more serious tragedies.

**My second objection reason is the zoning change will reduce neighborhood property values.**

The proposed rezoning area is surrounded by residential R1 zone. It is common sense that the values of the houses with health and safety concerns are always lower than the market value for comparable properties not subject to the influence, and this impact will be significant. As mentioned above, the proposed rezoning will cause potential health and safety risks; as a result this will also cause negative impact on future sales price for surrounding residential properties.

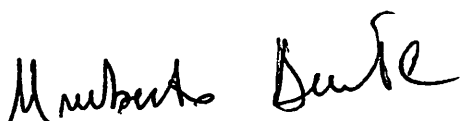
Also, from the aesthetic point of view, the visual unattractiveness can result with the decline in value of the surrounding properties too, since no residential owners like a eyesore high tower (10.7m) standing in front of their windows (even with parapets).

**My third objection reason is the zoning change is such rezoning does not comply with the Burnaby Official Community Plan**

The Commercial Policy Framework of the Burnaby Official Community Plan (OCP) indicates that the intersection of Lougheed Highway and Bainbridge Avenue is intended for future Urban Village Centre development, which includes local commercial uses to accommodate convenient commercial facilities and services that meet the day to day shopping needs of the surrounding residential neighborhoods. However, this rezoning intends to introduce non-shopping purpose telecommunication equipments/ facilities into this area.

In a word, if it has to be relocated, please advise Telus to relocate the telecom tower to a safe place with minimum of 400m away from residential zones. Zoning requirements were put in place for a reason, and should not be tossed out for the benefit of a single entity over the objection of the human race and neighborhood residents. Please highly value the residency environment and provide a healthy and safe living condition for your tax payers, who do care and love the City of Burnaby.

Sincerely yours,

Name: 

(The house-owner of 2950 COVENTRY PL., Burnaby, BC)

## Objection Letter to Rezoning

Name: KARL + ELLEN KURZ      STAN + MASAOKO FUKAWA

Address: 2962 COVENTRY PLACE  
BURNABY, BC V5A 3P8

Date: April 22, 2016

**RE: OPPOSITION TO ZONING CHANGE FOR BURNABY ZONING BYLAW 1965,  
AMENDMENT BYLAW NO. 13, 2016, BYLAW NO. 13589, REZONING REFERENCE  
#15-16**

Dear Burnaby City Council:

I am writing this letter in regards to the public hearing by your council on April 26 2016. Your council intends to pass a bylaw to amend Rezoning Reference #15-16. I would like to object strongly against such inappropriate alteration, because this change will lead negative impacts on health and safety, property values, and aesthetics to residents in our community.

### **My principal objection reason is the zoning change will bring significant health and safety risks to our neighborhood**

As we all know, the radiation from telecom tower/ antenna causes long-term health impacts to human race. Numerous studies have revealed that if people live within a quarter mile of a cell phone tower, the cell phone tower or antenna could put your health at significant risk. According to the link below, the proportion of newly developed cancer cases was three times higher among those who had lived during the past ten years at a distance of up to 400m (about 1300 feet) from the cellular transmitter site, compared to those living further away. Looking at only the first 5 years, there was no significant increased risk of getting cancer in the inner area. But after 5 years, the odds ratio for getting cancer was 3.38 in the inner area compared to the outer area. Breast cancer topped the list, with an average age of 50.8 year compared with 69.9 years in the outer area, but cancers of the prostate, pancreas, bowel, skin melanoma, lung and blood cancer were all increased. However, based on the Section 3.4.3 of your council report subjected Rezoning Reference #15-16, the proposed telecom tower with antennas are planned to be located approximately 31m from the neighboring single family residential property to the south, and 23.4m from the neighboring single family residential property to the east. Such distances are much less than the above mentioned safe radius of 400m.

<http://www.freehelpforcancer.com/cancers/cell-phone-towers-how-far-is-safe>

As well, the proposed telecom tower/antenna will be 10.7m of height. It has only 3-4m offset from the skytrain rail track, once it collapses by wind or other forces not only may it cause serious injuries to employees working in the five restaurants and stores in the existing building

and their customers, but also may result the shutdown of the skytrain as well as more serious tragedies.

**My second objection reason is the zoning change will reduce neighborhood property values.**

The proposed rezoning area is surrounded by residential R1 zone. It is common sense that the values of the houses with health and safety concerns are always lower than the market value for comparable properties not subject to the influence, and this impact will be significant. As mentioned above, the proposed rezoning will cause potential health and safety risks; as a result this will also cause negative impact on future sales price for surrounding residential properties.

Also, from the aesthetic point of view, the visual unattractiveness can result with the decline in value of the surrounding properties too, since no residential owners like a eyesore high tower (10.7m) standing in front of their windows (even with parapets).

**My third objection reason is the zoning change is such rezoning does not comply with the Burnaby Official Community Plan**

The Commercial Policy Framework of the Burnaby Official Community Plan (OCP) indicates that the intersection of Lougheed Highway and Bainbridge Avenue is intended for future Urban Village Centre development, which includes local commercial uses to accommodate convenient commercial facilities and services that meet the day to day shopping needs of the surrounding residential neighborhoods. However, this rezoning intends to introduce non-shopping purpose telecommunication equipments/ facilities into this area.

In a word, if it has to be relocated, please advise Telus to relocate the telecom tower to a safe place with minimum of 400m away from residential zones. Zoning requirements were put in place for a reason, and should not be tossed out for the benefit of a single entity over the objection of the human race and neighborhood residents. Please highly value the residency environment and provide a healthy and safe living condition for your tax payers, who do care and love the City of Burnaby.

Sincerely yours,

*Karl Kurz*

*Ellen Kurz*

*Masako Fukawa*

*Stanley J. Fukawa*

Name: *KARL KURZ* *Ellen Kurz* *MASAKO FUKAWA* *STAN FUKAWA*

(The house-owner of 2962 COVENTRY PLACE, Burnaby, BC)

## Objection Letter to Rezoning

Name: **Phuong Ho**

Address: **2988 RAINBRIDGE, BURNABY, BC**

Date: **APRIL 22 / 2016**

**RE: OPPOSITION TO ZONING CHANGE FOR BURNABY ZONING BYLAW 1965, AMENDMENT BYLAW NO. 13, 2016, BYLAW NO. 13589, REZONING REFERENCE #15-16**

Dear Burnaby City Council:

I am writing this letter in regards to the public hearing by your council on April 26 2016. Your council intends to pass a bylaw to amend Rezoning Reference #15-16. I would like to object strongly against such inappropriate alteration, because this change will lead negative impacts on health and safety, property values, and aesthetics to residents in our community.

### **My principal objection reason is the zoning change will bring significant health and safety risks to our neighborhood**

As we all know, the radiation from telecom tower/ antenna causes long-term health impacts to human race. Numerous studies have revealed that if people live within a quarter mile of a cell phone tower, the cell phone tower or antenna could put your health at significant risk. According to the link below, the proportion of newly developed cancer cases was three times higher among those who had lived during the past ten years at a distance of up to 400m (about 1300 feet) from the cellular transmitter site, compared to those living further away. Looking at only the first 5 years, there was no significant increased risk of getting cancer in the inner area. But after 5 years, the odds ratio for getting cancer was 3.38 in the inner area compared to the outer area. Breast cancer topped the list, with an average age of 50.8 year compared with 69.9 years in the outer area, but cancers of the prostate, pancreas, bowel, skin melanoma, lung and blood cancer were all increased. However, based on the Section 3.4.3 of your council report subjected Rezoning Reference #15-16, the proposed telecom tower with antennas are planned to be located approximately 31m from the neighboring single family residential property to the south, and 23.4m from the neighboring single family residential property to the east. Such distances are much less than the above mentioned safe radius of 400m.

<http://www.freehelpforcancer.com/cancers/cell-phone-towers-how-far-is-safe>

As well, the proposed telecom tower/antenna will be 10.7m of height. It has only 3-4m offset from the skytrain rail track, once it collapses by wind or other forces not only may it cause serious injuries to employees working in the five restaurants and stores in the existing building

and their customers, but also may result the shutdown of the skytrain as well as more serious tragedies.

**My second objection reason is the zoning change will reduce neighborhood property values.**

The proposed rezoning area is surrounded by residential R1 zone. It is common sense that the values of the houses with health and safety concerns are always lower than the market value for comparable properties not subject to the influence, and this impact will be significant. As mentioned above, the proposed rezoning will cause potential health and safety risks; as a result this will also cause negative impact on future sales price for surrounding residential properties.

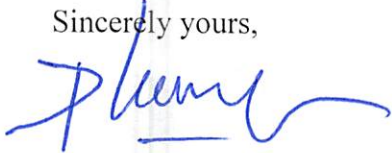
Also, from the aesthetic point of view, the visual unattractiveness can result with the decline in value of the surrounding properties too, since no residential owners like a eyesore high tower (10.7m) standing in front of their windows (even with parapets).

**My third objection reason is such rezoning does not comply with the Burnaby Official Community Plan**

The Commercial Policy Framework of the Burnaby Official Community Plan (OCP) indicates that the intersection of Lougheed Highway and Bainbridge Avenue is intended for future Urban Village Centre development, which includes local commercial uses to accommodate convenient commercial facilities and services that meet the day to day shopping needs of the surrounding residential neighborhoods. However, this rezoning intends to introduce non-shopping purpose telecommunication equipments/ facilities into this area.

In a word, if it has to be relocated, please advise Telus to relocate the telecom tower to a safe place with minimum of 400m away from residential zones. Zoning requirements were put in place for a reason, and should not be tossed out for the benefit of a single entity over the objection of the human race and neighborhood residents. Please highly value the residency environment and provide a healthy and safe living condition for your tax payers, who do care and love the City of Burnaby.

Sincerely yours,



Name:

PHUNG Ho

(The house-owner of

, Burnaby, BC)

## Objection Letter to Rezoning

Name: Sharon Petrollini

Address: 7125 Collister Drive  
Burnaby BC  
V5A 3P5

Date: Apr. 23, 2016

**RE: OPPOSITION TO ZONING CHANGE FOR BURNABY ZONING BYLAW 1965,  
AMENDMENT BYLAW NO. 13, 2016, BYLAW NO. 13589, REZONING REFERENCE  
#15-16**

Dear Burnaby City Council:

I am writing this letter in regards to the public hearing by your council on April 26 2016. Your council intends to pass a bylaw to amend Rezoning Reference #15-16. I would like to object strongly against such inappropriate alteration, because this change will lead negative impacts on health and safety, property values, and aesthetics to residents in our community.

**My principal objection reason is the zoning change will bring significant health and safety risks to our neighborhood !!!**

As we all know, the radiation from telecom tower/ antenna causes long-term health impacts to human race. Numerous studies have revealed that if people live within a quarter mile of a cell phone tower, the cell phone tower or antenna could put your health at significant risk. According to the link below, the proportion of newly developed cancer cases was three times higher among those who had lived during the past ten years at a distance of up to 400m (about 1300 feet) from the cellular transmitter site, compared to those living further away. Looking at only the first 5 years, there was no significant increased risk of getting cancer in the inner area. But after 5 years, the odds ratio for getting cancer was 3.38 in the inner area compared to the outer area. Breast cancer topped the list, with an average age of 50.8 year compared with 69.9 years in the outer area, but cancers of the prostate, pancreas, bowel, skin melanoma, lung and blood cancer were all increased. However, based on the Section 3.4.3 of your council report subjected Rezoning Reference #15-16, the proposed telecom tower with antennas are planned to be located approximately 31m from the neighboring single family residential property to the south, and 23.4m from the neighboring single family residential property to the east. Such distances are much less than the above mentioned safe radius of 400m.

<http://www.freehelpforcancer.com/cancers/cell-phone-towers-how-far-is-safe>

As well, the proposed telecom tower/antenna will be 10.7m of height. It has only 3-4m offset from the skytrain rail track, once it collapses by wind or other forces not only may it cause serious injuries to employees working in the five restaurants and stores in the existing building

and their customers, but also may result the shutdown of the skytrain as well as more serious tragedies.

**My second objection reason is the zoning change will reduce neighborhood property values.** | |

The proposed rezoning area is surrounded by residential R1 zone. It is common sense that the values of the houses with health and safety concerns are always lower than the market value for comparable properties not subject to the influence, and this impact will be significant. As mentioned above, the proposed rezoning will cause potential health and safety risks; as a result this will also cause negative impact on future sales price for surrounding residential properties.

Also, from the aesthetic point of view, the visual unattractiveness can result with the decline in value of the surrounding properties too, since no residential owners like a eyesore high tower (10.7m) standing in front of their windows (even with parapets).

**My third objection reason is the zoning change is such rezoning does not comply with the Burnaby Official Community Plan** | |

The Commercial Policy Framework of the Burnaby Official Community Plan (OCP) indicates that the intersection of Lougheed Highway and Bainbridge Avenue is intended for future Urban Village Centre development, which includes local commercial uses to accommodate convenient commercial facilities and services that meet the day to day shopping needs of the surrounding residential neighborhoods. However, this rezoning intends to introduce non-shopping purpose telecommunication equipments/ facilities into this area.

In a word, if it has to be relocated, please advise Telus to relocate the telecom tower to a safe place with minimum of 400m away from residential zones. Zoning requirements were put in place for a reason, and should not be tossed out for the benefit of a single entity over the objection of the human race and neighborhood residents. Please highly value the residency environment and provide a healthy and safe living condition for your tax payers, who do care and love the City of Burnaby.

Sincerely yours,



Name: Sharon Petrollini

(The house-owner of 7125 Collister DR, Burnaby, BC)

## Objection Letter to Rezoning

Name: NZISAN WOO

Address: 2976 COUNTRY PL. B1B7

Date: APRIL 23/16

**RE: OPPOSITION TO ZONING CHANGE FOR BURNABY ZONING BYLAW 1965, AMENDMENT BYLAW NO. 13, 2016, BYLAW NO. 13589, REZONING REFERENCE #15-16**

Dear Burnaby City Council:

I am writing this letter in regards to the public hearing by your council on April 26 2016. Your council intends to pass a bylaw to amend Rezoning Reference #15-16. I would like to object strongly against such inappropriate alteration, because this change will lead negative impacts on health and safety, property values, and aesthetics to residents in our community.

### **My principal objection reason is the zoning change will bring significant health and safety risks to our neighborhood**

As we all know, the radiation from telecom tower/ antenna causes long-term health impacts to human race. Numerous studies have revealed that if people live within a quarter mile of a cell phone tower, the cell phone tower or antenna could put your health at significant risk. According to the link below, the proportion of newly developed cancer cases was three times higher among those who had lived during the past ten years at a distance of up to 400m (about 1300 feet) from the cellular transmitter site, compared to those living further away. Looking at only the first 5 years, there was no significant increased risk of getting cancer in the inner area. But after 5 years, the odds ratio for getting cancer was 3.38 in the inner area compared to the outer area. Breast cancer topped the list, with an average age of 50.8 year compared with 69.9 years in the outer area, but cancers of the prostate, pancreas, bowel, skin melanoma, lung and blood cancer were all increased. However, based on the Section 3.4.3 of your council report subjected Rezoning Reference #15-16, the proposed telecom tower with antennas are planned to be located approximately 31m from the neighboring single family residential property to the south, and 23.4m from the neighboring single family residential property to the east. Such distances are much less than the above mentioned safe radius of 400m.

<http://www.freehelpforcancer.com/cancers/cell-phone-towers-how-far-is-safe>

As well, the proposed telecom tower/antenna will be 10.7m of height. It has only 3-4m offset from the skytrain rail track, once it collapses by wind or other forces not only may it cause serious injuries to employees working in the five restaurants and stores in the existing building

and their customers, but also may result the shutdown of the skytrain as well as more serious tragedies.

**My second objection reason is the zoning change will reduce neighborhood property values.**

The proposed rezoning area is surrounded by residential R1 zone. It is common sense that the values of the houses with health and safety concerns are always lower than the market value for comparable properties not subject to the influence, and this impact will be significant. As mentioned above, the proposed rezoning will cause potential health and safety risks; as a result this will also cause negative impact on future sales price for surrounding residential properties.

Also, from the aesthetic point of view, the visual unattractiveness can result with the decline in value of the surrounding properties too, since no residential owners like a eyesore high tower (10.7m) standing in front of their windows (even with parapets).

**My third objection reason is the zoning change is such rezoning does not comply with the Burnaby Official Community Plan**

The Commercial Policy Framework of the Burnaby Official Community Plan (OCP) indicates that the intersection of Lougheed Highway and Bainbridge Avenue is intended for future Urban Village Centre development, which includes local commercial uses to accommodate convenient commercial facilities and services that meet the day to day shopping needs of the surrounding residential neighborhoods. However, this rezoning intends to introduce non-shopping purpose telecommunication equipments/ facilities into this area.

In a word, if it has to be relocated, please advise Telus to relocate the telecom tower to a safe place with minimum of 400m away from residential zones. Zoning requirements were put in place for a reason, and should not be tossed out for the benefit of a single entity over the objection of the human race and neighborhood residents. Please highly value the residency environment and provide a healthy and safe living condition for your tax payers, who do care and love the City of Burnaby.

Sincerely yours,



Name: Nelson Wong

(The house-owner of 2976 Country Rd., Burnaby, BC)

## Objection Letter to Rezoning

Name: Mike Bao

Address: 102 - 2900 Bainbridge Ave

Date: Apr 23rd 2016

**RE: OPPOSITION TO ZONING CHANGE FOR BURNABY ZONING BYLAW 1965, AMENDMENT BYLAW NO. 13, 2016, BYLAW NO. 13589, REZONING REFERENCE #15-16**

Dear Burnaby City Council:

I am writing this letter in regards to the public hearing by your council on April 26 2016. Your council intends to pass a bylaw to amend Rezoning Reference #15-16. I would like to object strongly against such inappropriate alteration, because this change will lead negative impacts on health and safety, property values, and aesthetics to residents in our community.

### **My principal objection reason is the zoning change will bring significant health and safety risks to our neighborhood**

As we all know, the radiation from telecom tower/ antenna causes long-term health impacts to human race. Numerous studies have revealed that if people live within a quarter mile of a cell phone tower, the cell phone tower or antenna could put your health at significant risk. According to the link below, the proportion of newly developed cancer cases was three times higher among those who had lived during the past ten years at a distance of up to 400m (about 1300 feet) from the cellular transmitter site, compared to those living further away. Looking at only the first 5 years, there was no significant increased risk of getting cancer in the inner area. But after 5 years, the odds ratio for getting cancer was 3.38 in the inner area compared to the outer area. Breast cancer topped the list, with an average age of 50.8 year compared with 69.9 years in the outer area, but cancers of the prostate, pancreas, bowel, skin melanoma, lung and blood cancer were all increased. However, based on the Section 3.4.3 of your council report subjected Rezoning Reference #15-16, the proposed telecom tower with antennas are planned to be located approximately 31m from the neighboring single family residential property to the south, and 23.4m from the neighboring single family residential property to the east. Such distances are much less than the above mentioned safe radius of 400m.

<http://www.freehelpforcancer.com/cancers/cell-phone-towers-how-far-is-safe>

As well, the proposed telecom tower/antenna will be 10.7m of height. It has only 3-4m offset from the skytrain rail track, once it collapses by wind or other forces not only may it cause serious injuries to employees working in the five restaurants and stores in the existing building

and their customers, but also may result the shutdown of the skytrain as well as more serious tragedies.

**My second objection reason is the zoning change will reduce neighborhood property values.**

The proposed rezoning area is surrounded by residential R1 zone. It is common sense that the values of the houses with health and safety concerns are always lower than the market value for comparable properties not subject to the influence, and this impact will be significant. As mentioned above, the proposed rezoning will cause potential health and safety risks; as a result this will also cause negative impact on future sales price for surrounding residential properties.

Also, from the aesthetic point of view, the visual unattractiveness can result with the decline in value of the surrounding properties too, since no residential owners like a eyesore high tower (10.7m) standing in front of their windows (even with parapets).

**My third objection reason is such rezoning does not comply with the Burnaby Official Community Plan**

The Commercial Policy Framework of the Burnaby Official Community Plan (OCP) indicates that the intersection of Lougheed Highway and Bainbridge Avenue is intended for future Urban Village Centre development, which includes local commercial uses to accommodate convenient commercial facilities and services that meet the day to day shopping needs of the surrounding residential neighborhoods. However, this rezoning intends to introduce non-shopping purpose telecommunication equipments/ facilities into this area.

In a word, if it has to be relocated, please advise Telus to relocate the telecom tower to a safe place with minimum of 400m away from residential zones. Zoning requirements were put in place for a reason, and should not be tossed out for the benefit of a single entity over the objection of the human race and neighborhood residents. Please highly value the residency environment and provide a healthy and safe living condition for your tax payers, who do care and love the City of Burnaby.

Sincerely yours,

Name:



(The house-owner of

, Burnaby, BC)

## Objection Letter to Rezoning

Name: *Shuit Ching Chow*

Address: *7155 Callister dr. Bly. V5A-3Y7*

Date: *April 22, 2016*

**RE: OPPOSITION TO ZONING CHANGE FOR BURNABY ZONING BYLAW 1965, AMENDMENT BYLAW NO. 13, 2016, BYLAW NO. 13589, REZONING REFERENCE #15-16**

Dear Burnaby City Council:

I am writing this letter in regards to the public hearing by your council on April 26 2016. Your council intends to pass a bylaw to amend Rezoning Reference #15-16. I would like to object strongly against such inappropriate alteration, because this change will lead negative impacts on health and safety, property values, and aesthetics to residents in our community.

### **My principal objection reason is the zoning change will bring significant health and safety risks to our neighborhood**

As we all know, the radiation from telecom tower/ antenna causes long-term health impacts to human race. Numerous studies have revealed that if people live within a quarter mile of a cell phone tower, the cell phone tower or antenna could put your health at significant risk. According to the link below, the proportion of newly developed cancer cases was three times higher among those who had lived during the past ten years at a distance of up to 400m (about 1300 feet) from the cellular transmitter site, compared to those living further away. Looking at only the first 5 years, there was no significant increased risk of getting cancer in the inner area. But after 5 years, the odds ratio for getting cancer was 3.38 in the inner area compared to the outer area. Breast cancer topped the list, with an average age of 50.8 year compared with 69.9 years in the outer area, but cancers of the prostate, pancreas, bowel, skin melanoma, lung and blood cancer were all increased. However, based on the Section 3.4.3 of your council report subjected Rezoning Reference #15-16, the proposed telecom tower with antennas are planned to be located approximately 31m from the neighboring single family residential property to the south, and 23.4m from the neighboring single family residential property to the east. Such distances are much less than the above mentioned safe radius of 400m.

<http://www.freehelpforcancer.com/cancers/cell-phone-towers-how-far-is-safe>

As well, the proposed telecom tower/antenna will be 10.7m of height. It has only 3-4m offset from the skytrain rail track, once it collapses by wind or other forces not only may it cause serious injuries to employees working in the five restaurants and stores in the existing building

and their customers, but also may result the shutdown of the skytrain as well as more serious tragedies.

**My second objection reason is the zoning change will reduce neighborhood property values.**

The proposed rezoning area is surrounded by residential R1 zone. It is common sense that the values of the houses with health and safety concerns are always lower than the market value for comparable properties not subject to the influence, and this impact will be significant. As mentioned above, the proposed rezoning will cause potential health and safety risks; as a result this will also cause negative impact on future sales price for surrounding residential properties.

Also, from the aesthetic point of view, the visual unattractiveness can result with the decline in value of the surrounding properties too, since no residential owners like a eyesore high tower (10.7m) standing in front of their windows (even with parapets).

**My third objection reason is the zoning change is such rezoning does not comply with the Burnaby Official Community Plan**

The Commercial Policy Framework of the Burnaby Official Community Plan (OCP) indicates that the intersection of Lougheed Highway and Bainbridge Avenue is intended for future Urban Village Centre development, which includes local commercial uses to accommodate convenient commercial facilities and services that meet the day to day shopping needs of the surrounding residential neighborhoods. However, this rezoning intends to introduce non-shopping purpose telecommunication equipments/ facilities into this area.

In a word, if it has to be relocated, please advise Telus to relocate the telecom tower to a safe place with minimum of 400m away from residential zones. Zoning requirements were put in place for a reason, and should not be tossed out for the benefit of a single entity over the objection of the human race and neighborhood residents. Please highly value the residency environment and provide a healthy and safe living condition for your tax payers, who do care and love the City of Burnaby.

Sincerely yours,

Name: *Shut Ching Chow*

(The house-owner of

, Burnaby, BC)