

COMMUNITY HERITAGE COMMISSION

*HIS WORSHIP, THE MAYOR
AND COUNCILLORS*

**SUBJECT: “BURNABY THEN AND NOW”
CELEBRATING BURNABY 125 WITH HERITAGE MARKERS**

RECOMMENDATION:

1. THAT Council approve the final design and location for a series of plaques produced under the Burnaby 125 Heritage Markers project, as outlined in this report.

REPORT

The Community Heritage Commission, at its meeting held on 2017 September 07, received and adopted the attached report providing an update on the Burnaby 125 Heritage Markers project, and presenting the final design concept and proposed locations of 12 plaques.

Respectfully submitted,

Councillor C. Jordan
Chair

Councillor S. Dhaliwal
Vice Chair

Copied to:	City Manager Deputy City Manager Director Planning & Building Director Parks, Rec. & Cult. Services
------------	--

TO: CHAIR AND MEMBERS
COMMUNITY HERITAGE COMMISSION

DATE: 2017 August 30

FROM: DIRECTOR PLANNING AND BUILDING

FILE: 1650-20
Reference: Burnaby 125

SUBJECT: "BURNABY THEN AND NOW"
CELEBRATING BURNABY 125 WITH HERITAGE MARKERS

PURPOSE: To present an overview of the design and location of the Burnaby 125 Heritage Markers project.

RECOMMENDATION:

1. **THAT** Council be requested to approve the final design and location for a series of plaques produced under the Burnaby 125 Heritage Markers project, as outlined in this report.

REPORT**1.0 BACKGROUND**

Earlier this year, Council approved an expenditure of \$60,000.00 from the City's Gaming Fund to implement the Burnaby 125 Heritage Marker project. An additional \$57,000.00 to expand the project was secured through the "British Columbia Canada 150: Celebrating B.C. Communities and Their Contributions to Canada" grant program. The Burnaby 125 Heritage Marker project is intended to create and install a series of heritage markers at key locations throughout the City and linked to additional interpretation on the Heritage Burnaby website to celebrate Burnaby's 125th anniversary and acknowledge its rich and diverse history. This report is intended to provide the Community Heritage Commission and Council with an update on the project and present the final design concept and proposed locations of 12 plaques.

2.0 BURNABY THEN AND NOW

The theme for Burnaby's 125 heritage markers is "Burnaby Then and Now" and celebrates Burnaby's unique stories provided by local residents based on the following five key themes: *Working People, Taking a Stand, Protecting the Environment, Celebrating Diversity and Urban Development.*

To: Community Heritage Commission
From: Director Planning and Building
Re: "Burnaby Then and Now" – Celebrating Burnaby
125 with Heritage Markers

2017 August 30..... Page 2

Research and design for 12 heritage markers as listed below is complete. The plaque designs will be on display at City Hall's public foyer in September 2017. The distribution and location of these plaques are shown in **Attachment #1** and are distributed across each of the four quadrants of the City.

Map Ref.	General Topic	Location of Plaque
1	Burnaby's Response to the Great Depression	Tommy Douglas Library, 7311 Kingsway
2	Diversity of Workforce at Barnet Mill	8382 Burrard Inlet, Barnet Marine Park
3	Kapoor Singh Siddoo	8382 Burrard Inlet, Barnet Marine Park
4	Eileen Dailly	Confederation Park, 250 Willingdon Avenue
5	Chinese-Canadian Farmers of Big Bend	Riverway Golf Course, 9001 Bill Fox Way
6	Kingsway in the Post-War Era	Public area along Kingsway fronting Station Square – Tower 1, 4650 Kingsway
7.	Alan Emmott and Post-War Burnaby	Alan Emmott Centre, 6650 Southoaks Crescent
8	Saving Burnaby Lake	Burnaby Lake Regional Park (Piper Avenue)
9	Preserving the Brunette River	Central Valley Greenway (near Gaglardi Way)
10	Willingdon Heights	Willingdon Heights Park, 1491 Carleton Avenue
11	Dominion Bridge to Bridge Studios	Jim Lorimer Park, 2338 Gilmore Avenue
12	New Vista and Ernie Winch	Cafferky Park, 7604 Holly Street

Each plaque utilizes a colourful palette and combines a variety of images and text with interesting graphic styles to draw viewer's attention to its' content. The majority of these plaques will be located outdoors in park and civic areas with easy access and viewing by the public and secured to existing civic structures or new sign stands to prevent theft and/or damage. A sample design is attached showing the overall graphic design concept (**Attachment #2**).

Prior to their final installation, staff will be organizing special exhibits to display the plaques at civic facilities such as libraries and community centres to further promote the project and highlight Burnaby's 125th anniversary celebration. An article featuring this project will be included in the Fall Edition 2017 of InfoBurnaby.

These first plaques under the program have been advanced to coincide with Burnaby's 125th anniversary on September 22, 2017. Existing funding may provide for additional heritage markers, which will be advanced for separate approval, as required.

The additional funds secured through the BC Canada 150 grant program will also be used to produce a companion series of video vignettes to be featured on the City's social media channels

To: Community Heritage Commission
From: Director Planning and Building
Re: "Burnaby Then and Now" – Celebrating Burnaby
125 with Heritage Markers
2017 August 30..... Page 3

and permanently retained and archived on the Heritage Burnaby website (www.heritageburnaby.ca).

3.0 NEXT STEPS

The Burnaby 125 Heritage Marker project celebrates the City's milestone anniversary by expanding public access to the City's historical information and photographs. The project will provide a more complete and inclusive picture of Burnaby's history that can be shared with the wider community. With the concurrence of the Commission and Council, staff will proceed to manufacture and install the heritage markers, as outlined in this report.

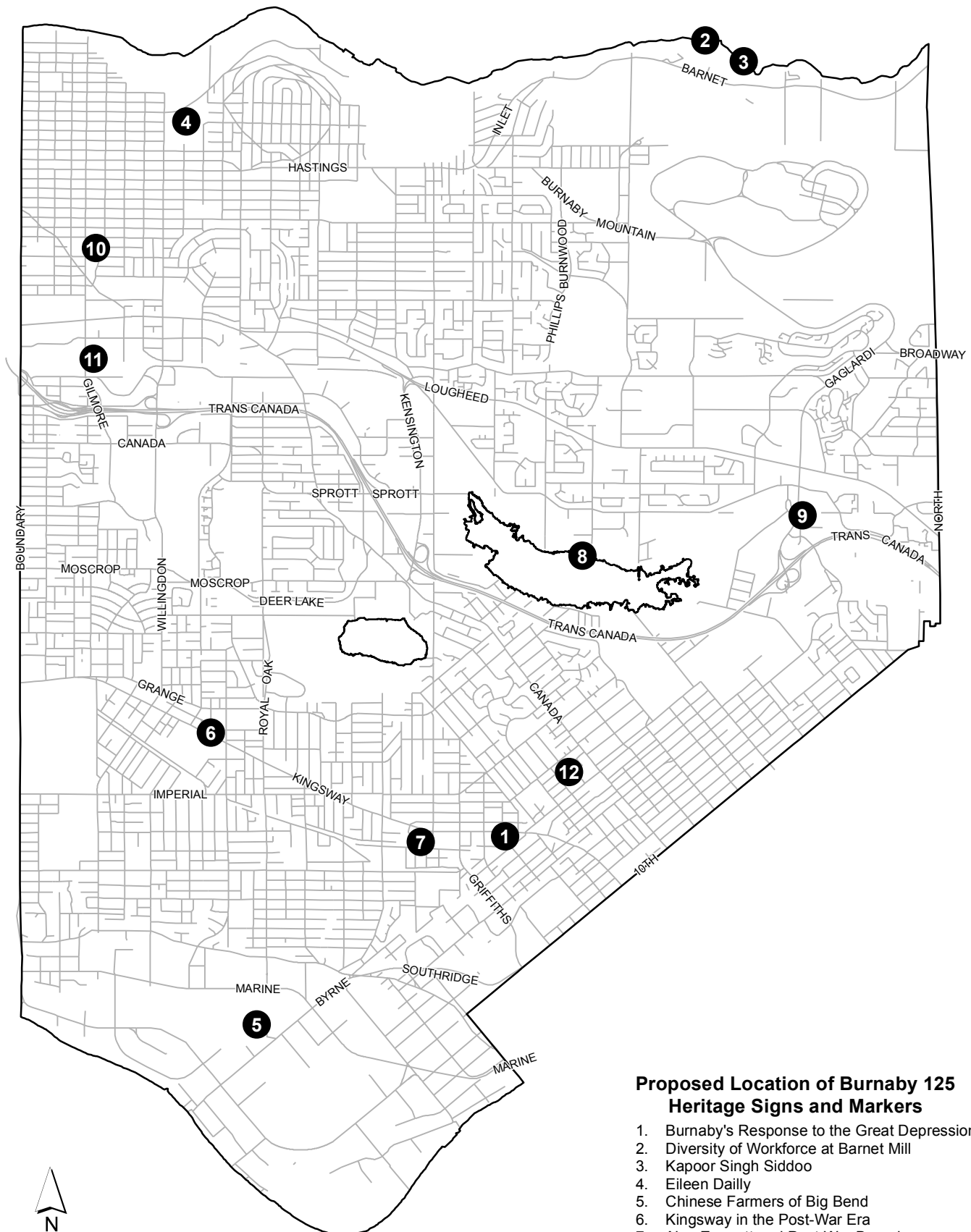

Lou Pelletier, Director
PLANNING AND BUILDING

HL:sa

Attachments(2)

Copied to: City Manager
Deputy City Manager
City Clerk
Director Parks, Recreation and Cultural Services

R:\Long Range Clerical\DOCS\HL\Reports\2017\Burnaby Then and Now (2017.09.07).docx



Proposed Location of Burnaby 125 Heritage Signs and Markers

1. Burnaby's Response to the Great Depression
2. Diversity of Workforce at Barnet Mill
3. Kapoor Singh Siddoo
4. Eileen Dailly
5. Chinese Farmers of Big Bend
6. Kingsway in the Post-War Era
7. Alan Emmott and Post-War Burnaby
8. Saving Burnaby Lake
9. Preserving the Brunette River
10. Willingdon Heights
11. Dominion Bridge to Bridge Studios
12. New Vista and Ernie Winch



PROTECTING THE ENVIRONMENT

Saving Burnaby Lake

EARLY HISTORY

Burnaby Lake was used as a transportation route and harvesting site for thousands of years by First Nations people. The water levels of the shallow lake naturally varied from season to season, with the lake expanding in size during peak rainfall periods.

INDUSTRY AND INTERVENTION

By the early 1900s, logging operations had removed the old growth forest surrounding the lake. Seasonal variation in water levels increased without the forest to filter run-off and absorb rainwater. A dam built on the Brunette River in 1915 to regulate water levels slowed the flow of water, and by the 1950s the lake was filling with silt and aquatic plants.

Human intervention has disrupted the natural processes of Burnaby Lake. Since the 1970s, activists have been working hard to undo the damage.

PRESERVATION AND ADVOCACY

By the late 1960s, the lake was heavily polluted and inaccessible to the public. A coalition of naturalists and educators began working to improve the lake's health. The Burnaby Lake Advisory Association built a system of trails around the lake in the 1970s. Public support for the lake grew resulting in the creation of Burnaby Lake Regional Park in 1979.

KEEPING IT NATURAL

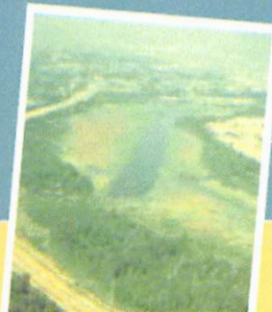
Burnaby Lake is slowly filling with peat and shrinking, which is a natural part of the lake's lifecycle. Today's challenge is to allow this natural process to take place, while preserving the lake as an important habitat for fish and wildlife.



1951: A channel was dredged through the lake to increase water flow between Oak Creek, Deer Lake Brook, and the Brunette River.



1966: The lake was being choked by silt and an invasive growth of water lilies. Much of the lake had less than 2 ft. deep of water cover in the summer months.



1973: A large rectangular channel was dredged in the lake. Some of the dredged material was deposited in the shoreline area of the lake, creating problems later.



1970s: Cleanup events were held regularly. Beginning in the 1970s, the 1988 cleanup event attracted 12 community groups and over 100 volunteers.

PEOPLE



Doreen Lawson advocated for preservation of Burnaby Lake for over 20 years.



HERITAGE BURNABY More info? heritageburnaby.ca