



Financial Management Committee
c/o Office of the City Clerk

K. O'Connell, City Clerk
B. Zeinabova, Deputy City Clerk

INTER-OFFICE MEMORANDUM

TO: CHAIR AND MEMBERS
PUBLIC SAFETY COMMITTEE

DATE: 2018 MAY 08

FROM: ADMINISTRATIVE OFFICER

FILE: 2410-20

SUBJECT: SAFETY & SECURITY ENHANCEMENTS IN PARKS & PUBLIC PLACES
(ITEM 5(B), FMC REPORT, COUNCIL 2018 MAY 07)

Burnaby City Council, at the Open Council meeting held on 2018 May 07, received the above noted report and adopted the following recommendations contained therein:

1. THAT Council receive this report for information.
2. THAT a copy of the report be sent to the Public Safety Committee and the Parks, Recreation and Culture Commission for information.

As directed, a copy of the report is attached for your information.


Monica Macdonald
Administrative Officer

FINANCIAL MANAGEMENT COMMITTEE

*HIS WORSHIP, THE MAYOR
AND COUNCILLORS*

SUBJECT: SAFETY & SECURITY ENHANCEMENTS IN PARKS AND PUBLIC PLACES

RECOMMENDATIONS:

1. THAT Council receive this report for information.
2. THAT a copy of the report be sent to the Public Safety Committee and the Parks, Recreation and Culture Commission for information.

REPORT

The Financial Management Committee, at its meeting held on 2018 April 17, received and adopted the attached report providing information regarding safety and security enhancements in parks and public places.

Respectfully submitted,

Councillor D. Johnston
Chair

Councillor C. Jordan
Vice Chair

Copied to:	City Manager Director Parks, Recreation & Cultural Services Director Finance Director Public Safety & Community Services City Solicitor
------------	---

TO: CHAIR AND MEMBERS
FINANCIAL MANAGEMENT COMMITTEE

DATE: 2018 April 17

FROM: DIRECTOR PARKS, RECREATION &
CULTURAL SERVICES

FILE: 62000-00

**SUBJECT: SAFETY & SECURITY ENHANCEMENTS IN PARKS AND PUBLIC
PLACES**

PURPOSE: To request the use of Gaming Reserves to finance the project included in the Capital Plan.

RECOMMENDATIONS:

1. **THAT** the Financial Management Committee authorize the use of Gaming Reserves in the amount of \$950,000 to finance the project included in the Capital Plan, as outlined in this report.
2. **THAT** a copy of the report be sent to the Public Safety Committee and the Parks, Recreation and Culture Commission for information.

REPORT

INTRODUCTION

Patron safety in parks has been an ongoing concern for park designers and operations personnel throughout the decades. Current park planning procedures follow Crime Prevention through Environmental Design principles (CPTED), ensuring safety and security measures are implemented incrementally as part of redevelopment plans.

The following report provides a description and timeline of new initiatives outlined in the 2017 October 03 report to Council on Safety and Security in Parks and Open Spaces. The first segment of the program, the Bike Patrol initiative organized by the City will begin operation in 2018. This report outlines additional Parks initiatives that will proceed in 2018/2019 and measures that will be added pending review and approval by appropriate authorities.

POLICY SECTION

The proposed projects align with the City of Burnaby's Corporate Strategic Plan, by supporting the following goals and sub-goals of the Plan.

- A Safe Community
 - Crime prevention and reduction.
 - Emergency preparedness.
 - Emergency services.
 - Transportation Safety
 - Community amenity safety.
- A Connected Community
 - Geographic connection.

PROPOSED ACTION ITEMS

Trail Lighting

Park lighting has been installed in select locations for a variety of purposes. In Central Park, the most recent installations have been along Boundary Road in conjunction with the first phase of the perimeter trail. Ongoing installations will happen in conjunction with planned trail development and park upgrades. Lighting is intended to serve the following needs:

- Illuminating areas that can be monitored by surrounding residents.

In Central Park, this will be achieved through the installation of pedestrian lighting along the perimeter trail, to accomplish the end result of a lit pedestrian trail that circumnavigates the Park. The trail lighting program will be implemented as follows:

- Boundary Road Section (Imperial to 45th Avenue) – installed in 2017.
 - Patterson Section (Imperial to Beresford Street) 2018/2019.
 - Imperial Section (from Boundary to Patterson) 2019/2020
 - Boundary Extension (45th to Kingsway) *future*.
 - Patterson Extension (Beresford Street to Kingsway) *future*.
- Lighting specific destination zones and pathways that connect to them.

Throughout the parks system where activity is expected at dusk or dawn, such as dog off leash areas, lighting will be added for safety and security both at the destination and along the trail connections to the proximate parking area. In

To: Financial Management Committee
From: Director Parks, Recreation & Cultural Services
Re: SAFETY & SECURITY ENHANCEMENTS IN
PARKS AND PUBLIC PLACES
2018 Apr 17.....Page 3

Central Park the lighting between the parking lot and the outdoor pool, and, BC Parkway and Variety Playground will be upgraded. This work will begin in 2018 and continue as funds permit.

- Illuminating trail heads.

There are multiple primary and secondary trail heads and juncture points within Central Park. Some will be lit through the proposed lighting additions; however, other locations will require identification and site truthing before being put forward for lighting consideration. The plan going forward in 2018 will unfold as follows:

- Hierarchical rating of existing trail heads and junctures based on use patterns.
- Location of new light fixtures and definition of types.
- Design and cost estimating of site works.
- Installation.

Signage

Sign kiosks exist in 5 locations within Central Park. Each of these will continue to be updated with directional and information signage.

Secondary and tertiary points along pedestrian trails where they split into different directions will be identified in anticipation of the addition of directional signage to facilitate movement in the park. This work will be undertaken in 2018 with installation continuing into 2019. The work will include:

- Identification of locations for additional signage.
- Design of signs that will include GPS site reference for security reporting.
- Order and installation of signs and related support systems.

Security Cameras

Staff are proposing to install security cameras at select points in Central Park. The camera operation will comply with Freedom of Information and Privacy Act (FIPPA) regulations. Recorded footage of these cameras will be used to gather potential evidence in the event that illegal activities take place within the park.

The criteria for site selection were identified as high use zones that can provide visual information on people entering and leaving the park. In Central Park, the pedestrian high use entry zones coincide with the five information kiosks situated on the edges of the park as illustrated in Attachment #1.

To: Financial Management Committee
From: Director Parks, Recreation & Cultural Services
Re: SAFETY & SECURITY ENHANCEMENTS IN
PARKS AND PUBLIC PLACES
2018 Apr 17.....Page 4

Following installation of the cameras, the information flow systems will be operationalized using the same processes and protocols that currently are in use at other parks and recreation facilities.

An evaluation of the program outcomes and operational impacts will be used to inform the timing and need for expansion into other park entry zones on the perimeter of the parks and in parking areas.

Call Boxes

The purpose of the call box program is to connect people instantly with first responders, (which means, direct contact to 911 dispatch). The stated objectives were to establish locations that could be powered efficiently, and that would create a 'Help Zone' which is lit, with signage indicating video monitoring is in effect. The equipment would include an auto locator and would be FIPPA compliant.

The first step is to install a prototype call box to gauge their effectiveness and usefulness. Concerns related to false calls and mischief calls can be monitored and reviewed in relation to location. Potential action plans will be set in place to mediate unwarranted use.

The current design and technology for call boxes offer systems that combine the call box with a top-mounted security camera so in select locations the callbox and a security camera will function as one unit within the proposed Help Zone. The approach for installation of call boxes will begin with a pilot program that would have help zones and call boxes at 2 locations in Central Park (Attachment #1). The location and usefulness of the boxes will be reviewed in 2019/2021 with feedback from RCMP and the public. The expansion of location and frequency of future call box locations throughout the park will be brought forward to the Parks, Recreation and Culture Commission and Council for consideration at that time.

FUNDING

Initiatives beginning in 2018 will expand and continue as the safety and security program unfolds. For 2018/2019 the estimated budget allocation will be as follows:

Kiosk signage, trail directional signage Including posts, signs	\$70,000
Lighting (poles and power sources) Central Park Pool to the parking lot BC Parkway to Variety Playground Perimeter Trail - Imperial Section Perimeter Trail - Boundary Extension around the Stadium Perimeter Trail - Patterson Extension - Beresford to Kingsway	\$610,000

To: Financial Management Committee
From: Director Parks, Recreation & Cultural Services
Re: SAFETY & SECURITY ENHANCEMENTS IN
PARKS AND PUBLIC PLACES
2018 Apr 17 Page 5

Security cameras (5 locations)	\$180,000
Assessment review	
Cameras	
Installation	
Storage systems	
Labour to operate	
Help Zone blue box systems (2 locations)	\$90,000
Hardware	
power source hook-up	
installation	

Gaming Funds will be required to fund the program that will unfold over the next few years. While this report requests funding based on the best cost information available at this time, the actual costs will be linked to ground conditions that will vary, specifically for lighting and security cameras where power will be required. These costs are targeted for improvements largely in Central Park but will also include the zones in various parks in the future. Staff will evaluate on a yearly basis the additional safety and security measures required in Central Park and other locations. The information will be brought back to Council for consideration.

These expenditures are included in the 2018–2022 Provisional Plan and sufficient Gaming reserve are available to finance the projects outlined in this report.

RECOMMENDATION

It is recommended that Financial Management Committee authorize the use of gaming reserves in the amount of \$950,000 to begin the design and construction of the security measures and associated studies as outlined in this report.



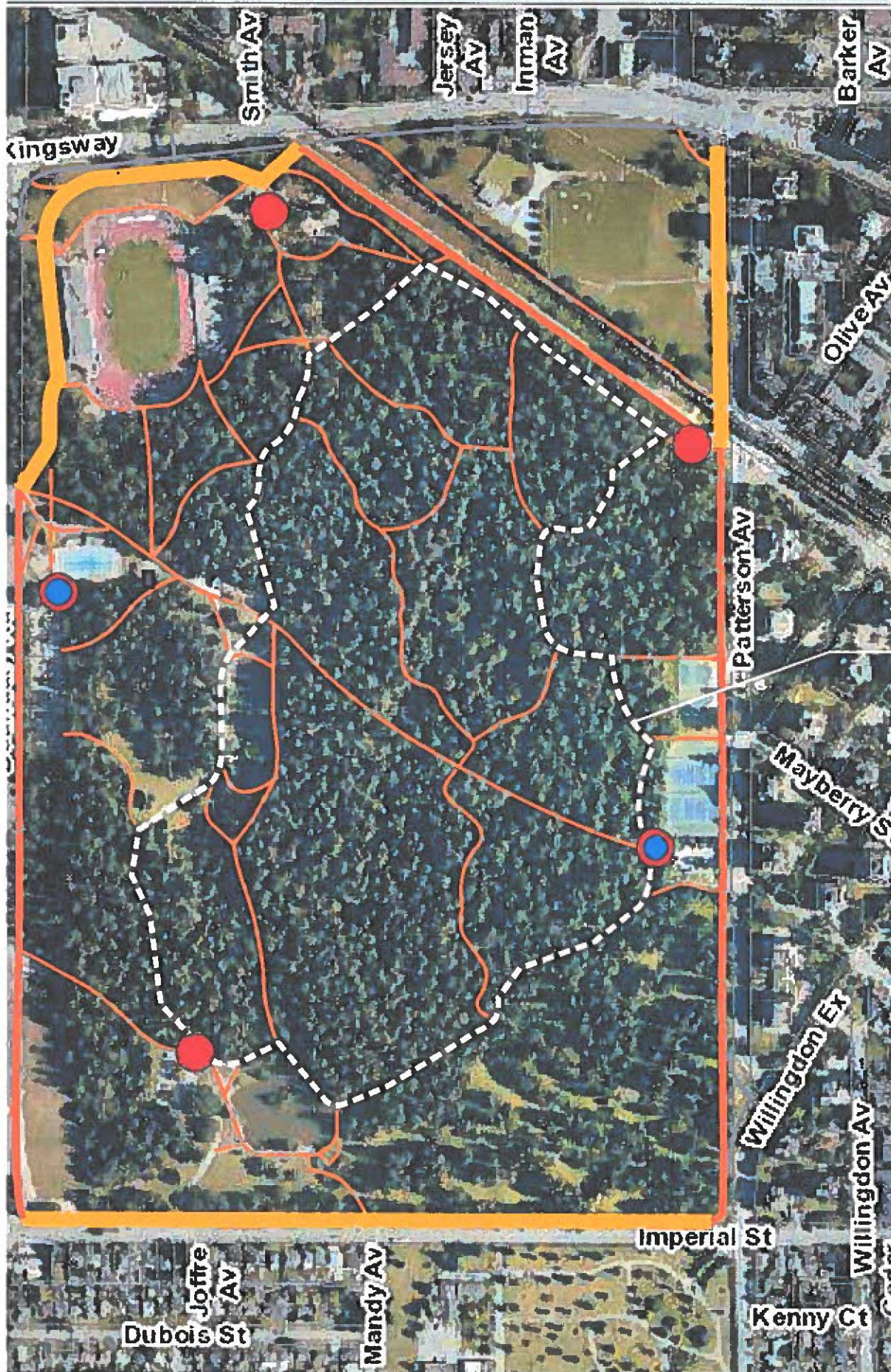
Dave Ellenwood
DIRECTOR PARKS, RECREATION & CULTURAL SERVICES

HE:tc

Attachment

p:\admin\tc\he\reports\Safety & Security Enhancements in Parks and Public Places 2

Copied to: Director Finance
City Solicitor



TRAIL OF HOPE

- Information & way finding kiosk (5
- Help Zone & call box
- Future perimeter trail with lighting



CENTRAL PARK: Safety Initiative Site Plan