
TO: CITY MANAGER **DATE:** 2018 June 12

FROM: DIRECTOR ENGINEERING **FILE:** 38000-40

SUBJECT: 1ST ANNUAL BURNABY PRIDE EVENT

PURPOSE: To seek Council approval for a road closure.

RECOMMENDATIONS:

1. **THAT** Council approve the road closure as discussed in this report.
2. **THAT** the coordinator of the event, Antonia Beck, Executive Director, Burnaby Neighbourhood House, 4460 Beresford Street, Burnaby, BC V5H 0B8, be sent a copy of this report.

REPORT

A request to use City streets for the 1st Annual Burnaby Pride Event on Saturday, 2018 August 11 between 12noon and 4:00 pm has been received from Antonia Beck, Executive Director of the South Burnaby Neighbourhood House. Council approval is required by the Street & Traffic Bylaw.

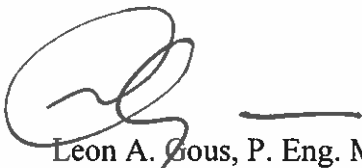
South Burnaby Neighbourhood House is a not-for-profit organization that offers a wide range of programs and services to people of all ages and diverse cultures living in Burnaby. They are working with a number of partners to make this event a success and they include the Burnaby Library, Parks and Recreation Youth Services, Purpose Society, Transcare BC and other groups. This event is a public event that further promotes their work in building welcoming and inclusive neighbourhoods. Over 700 people are expected to attend this year's event. In addition to a barbecue by the Burnaby Firefighters, the event will have a variety of interactive booths hosted by community partners and local businesses, resource and program information and referral, display booths, music and children and family activities such as games, face painting and crafts.

The Neighbourhood House is requesting the closure of Jubilee Avenue from Nelson Avenue to Imperial Street (see *attached* map) from 10:00 am to 6:00 pm which includes set up and take down. The Neighbourhood House has consulted with all of the businesses on Jubilee Avenue and they are all supportive of this request. Parking will be removed on Jubilee for the event.

To: City Manager
From: Director Engineering
Re: 1ST ANNUAL BURNABY PRIDE EVENT
2018 June 12 Page 2

The organizers are aware that approval is subject to the following conditions:

1. That the road closure be conducted under the supervision of one person as organizer.
2. That all participants be instructed to respect the rights and property of the individuals encountered enroute.
3. That the organizers are responsible for arranging barricade volunteers for all barricade locations.
4. That all emergency and transit services are advised of the event.
5. That the road closure be covered with liability insurance in the minimum amount of \$2 million with the City of Burnaby named as co-insured, and that the insurance policy include a 30 day cancellation notice and a cross liability clause.
6. That a signed copy of the "City of Burnaby Permit For Short Term Use and Occupancy Of City Lands" be received no later than one week prior to the event.



Leon A. Gous, P. Eng. MBA
Director Engineering

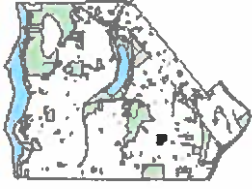
SP/ac

Attachment

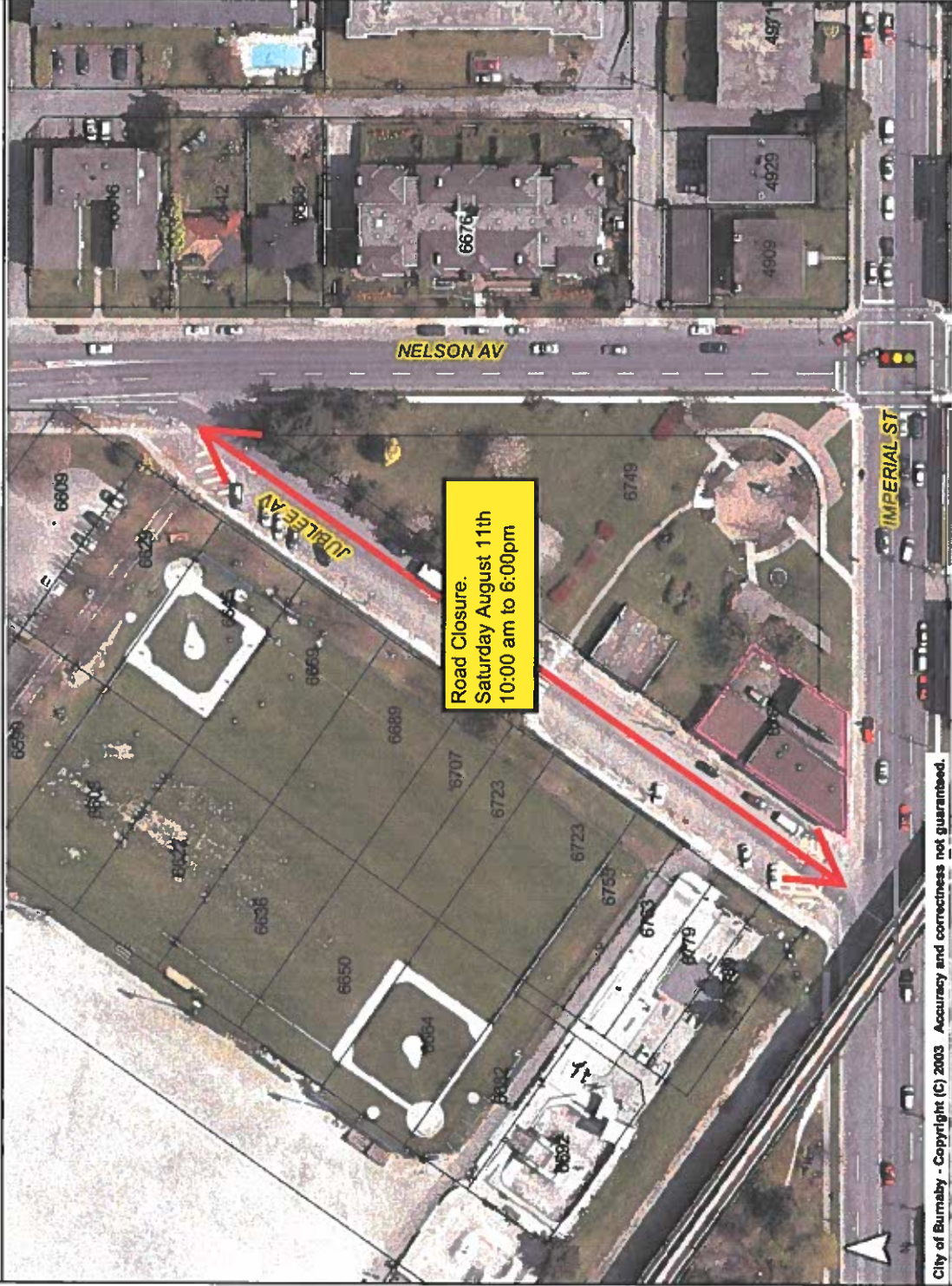
Copied to: Director, Public Safety & Community Services
RCMP – OIC Burnaby Detachment Chief Supt. Deanne Burleigh
Fire Chief – Joe Robertson
BC Ambulance Special Operator via email at EMSO@bcehs.ca
Emergency Program Coordinator – Charmaine Pflugrath
Supervisor, Sports & Outdoor Recreation – Jill Porter



1st Annual Burnaby Pride Event
Saturday August 11, 2018



- Selected Features ☐ Boundary
- Strata Units
 - Air Space
 - Addresses
 - Strata Addresses
 - Addresses
 - Air Space
 - Lot
 - Street Intersections
 - Traffic Signal
 - Speed Humps
 - Speed Humps
 - Roads
 - Private
 - Residential
 - Collector
 - Aerial
 - Freeway
 - Colour 2008
 - Hydrology



Road Closure.
Saturday August 11th
10:00 am to 6:00pm

City of Burnaby - Copyright (C) 2003 Accuracy and correctness not guaranteed.

This information has been gathered and assembled on the City of Burnaby's computer systems. Data provided herein is derived from a number of sources with varying levels of accuracy. The City of Burnaby disclaims all responsibility for the accuracy or completeness of information contained herein.

Map Scale
1 : 1250