

PUBLIC SAFETY COMMITTEE

*HIS WORSHIP, THE MAYOR
AND COUNCILLORS*

SUBJECT: TRAFFIC CONCERNS AT KITCHENER ELEMENTARY SCHOOL

RECOMMENDATIONS:

1. THAT Council receive this report for information purposes.
2. THAT a copy of this report be sent to the Kitchener Elementary School PAC and others copied on the letter from the PAC to the Public Safety Committee.

REPORT

The Public Safety Committee, at its meeting held on 2018 September 18, received and adopted the attached report to respond to traffic concerns along Gilmore Avenue in front of Kitchener Elementary School.

Respectfully submitted,

Councillor P. Calendino
Chair

Councillor S. Dhaliwal
Vice Chair

Copied to:	City Manager Director Engineering Director Public Safety and Community Services
------------	---

TO: CHAIR AND MEMBERS
PUBLIC SAFETY COMMITTEE

DATE: 2018 Sep 12

FROM: DIRECTOR ENGINEERING

FILE: 38000-20

SUBJECT: TRAFFIC CONCERNS AT KITCHENER ELEMENTARY SCHOOL

PURPOSE: To respond to traffic concerns along Gilmore Ave in front of Kitchener Elementary School

RECOMMENDATIONS:

1. **THAT** the Committee receive this report for information.
2. **THAT** a copy of this report be sent to the Kitchener Elementary School PAC and others copied on the letter from the PAC to the Public Safety Committee.

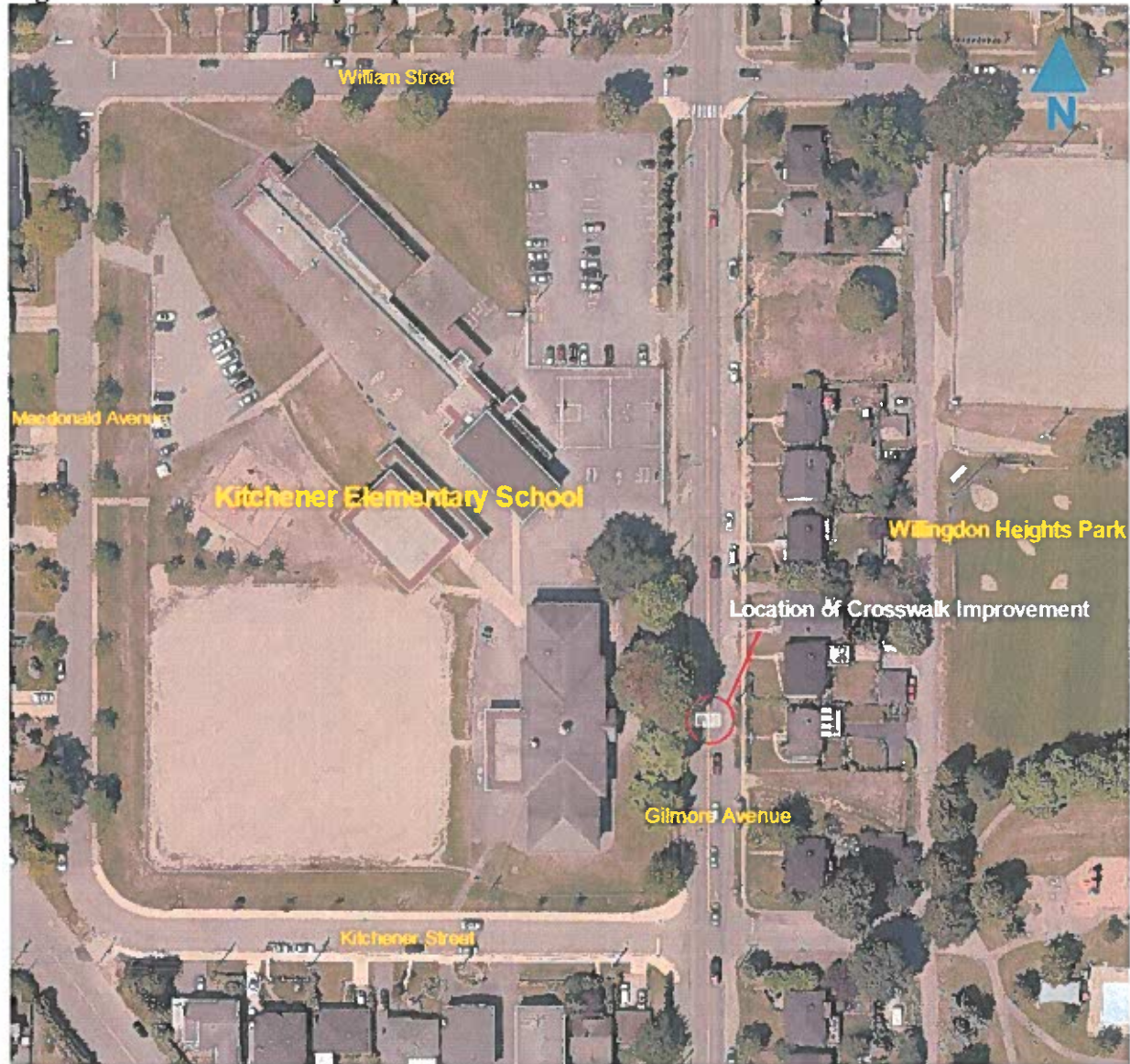
REPORT**INTRODUCTION**

On 2018 May 15 the Public Safety Committee received a letter and delegation from the Kitchener Elementary School PAC expressing ongoing concerns about traffic safety along Gilmore Ave in front of Kitchener Elementary School. Specific concerns include vehicle speeds, close calls, and vehicles not stopping for pedestrians at the existing marked crosswalk. A request was made for a reassessment of the traffic conditions and several suggestions were made for the installation of addition traffic control measures. The Committee referred the delegation to staff for review and report back.

Figure 1 shows the location of the Kitchener Elementary School and the existing marked pedestrian crosswalk.

To: Public Safety Committee
From: Director Engineering
Re: Traffic Concerns at Kitchener Elementary School
2018 Sep 18..... Page 2

Figure 1: Crosswalk Safety Improvement - Kitchener Elementary School



POLICY SECTION

Goal

- A Safe Community
 - Transportation safety –
Make City streets, pathways, trails and sidewalks safer

To: Public Safety Committee
From: Director Engineering
Re: Traffic Concerns at Kitchener Elementary
School

2018 Sep 18..... Page 3

DISCUSSION

Gilmore Ave in front of Kitchener Elementary School has been reviewed on several occasions in the past and a number of traffic measures have been implemented to enhance traffic safety over the past several years. The physical changes made include curb bulges at the intersection of Gilmore Ave and William St to facilitate pedestrian crossings, adjustments to the location of school zone signs to enhance visibility, permanent installation of the oversized school zone information board, installation of concrete barriers on the west side of Gilmore to reinforce the No Stopping zone, pedestrian curb ramps on the west side of the intersection of Gilmore Ave and Kitchener St, and reflective markers along the posts supporting the pedestrian crosswalk signs to highlight the signs.

Reviews completed in the past indicate that a pedestrian signal is not warranted at the existing midblock pedestrian crosswalk in front of the school. However, since last year the City has installed Rectangular Rapid Flashing Beacons (RRFB) at several locations throughout Burnaby. These have proven to be an effective and economical upgrade to existing marked crosswalks where a pedestrian signal is not warranted. The roadside mounted flashing beacons, when activated, alert motorists to pedestrians waiting to cross. As previously reported to the Committee on 2018 May 15, the RRFB is suitable and recommended for installation at the crosswalk in front Kitchener Elementary School. Plans are now being made to have these installed prior to the end of this year within the existing 2018 Capital Budget

Additional concrete barriers on the east side of Gilmore Ave just north of the crosswalk will also be installed to reinforce the No Stopping zone on that side of the street. The barriers will visually reduce the roadway width and should help to keep vehicle speeds low.

RECOMMENDATION

It is recommended that the Committee receive this report for information.



Leon A. Gous, P.Eng. MBA
DIRECTOR ENGINEERING

DL:jb

Copied to: City Manager
Director Public Safety and Community Services