

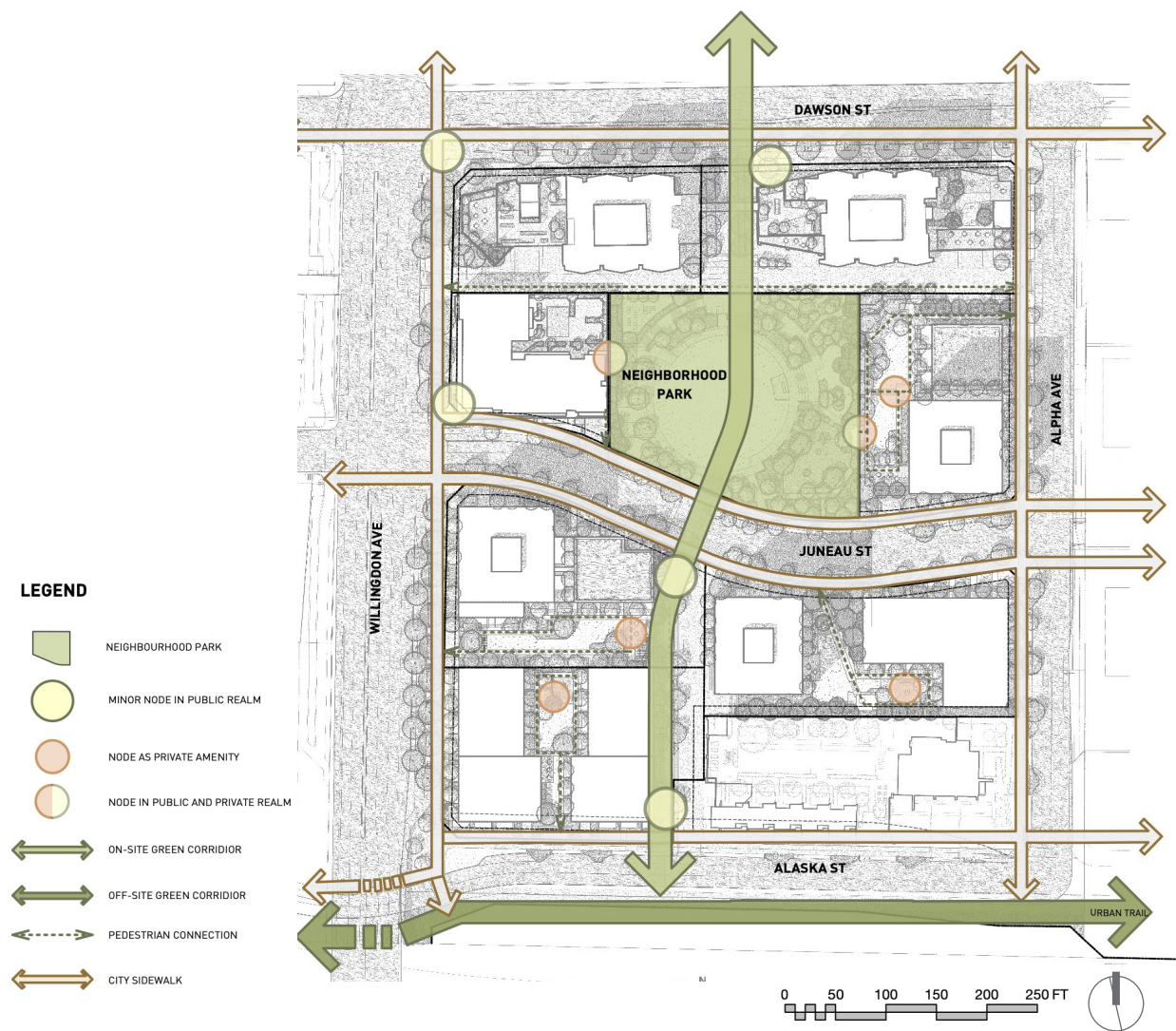
## Design Moves - Circulation & Nodes

The permeability and accessibility allows for pedestrian circulation throughout the site. A significant green corridor acts as the spine of the site, transects the neighbourhood park, and connects the development to off-site green corridors. In addition, pedestrian activity within the parcels and along the sidewalk establish multiple nodes within the public and private realm.

The introduction of a Juneau Street in the centre of the development enhances vehicular circulation, while private lanes with pedestrian friendly loading/drop off zones assists in maintaining a pedestrian friendly environment.

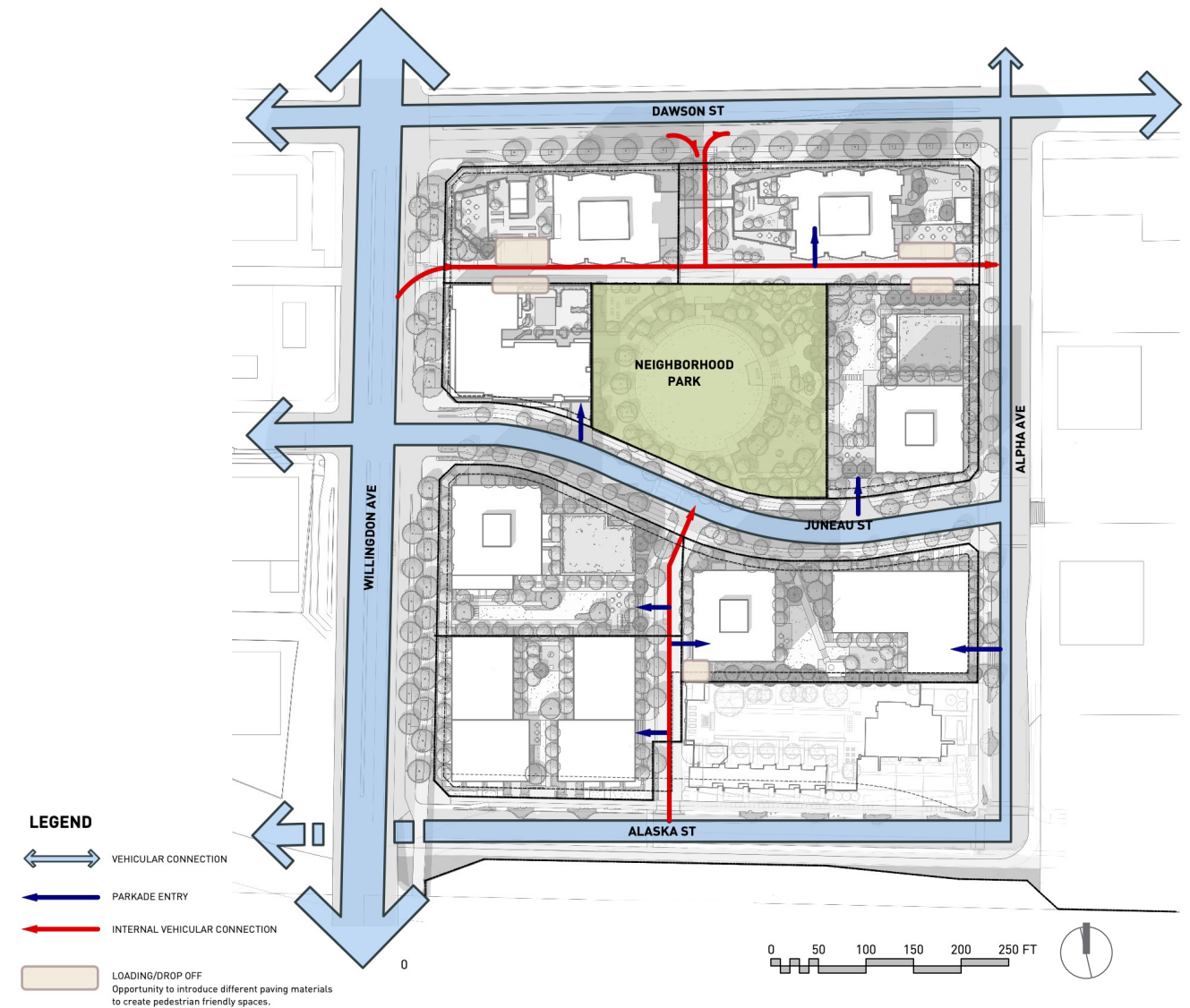
### Pedestrian Circulation & Nodes

Pedestrian Circulation & Nodes Diagram



### Vehicular Circulation

Vehicular Circulation Diagram





## Design Moves - Open Space Network & Stormwater Management

The aforementioned design moves directly influence the open space network and storm water management on site. The accessibility and circulation interweaves a series of open spaces throughout the site. These spaces are further connected to adjacent development parcels within the site and to the greater open space network in the area through pathways and lane linkages. These open spaces, when combined with the topography, dictates the directionality of stormwater movement on site and informs the location of the rain gardens.

These design moves are vital towards creating a connected, accessible, and sustainable development for the local residents and the surrounding neighbourhood.

### Open Space Network

Green Space Network Diagram



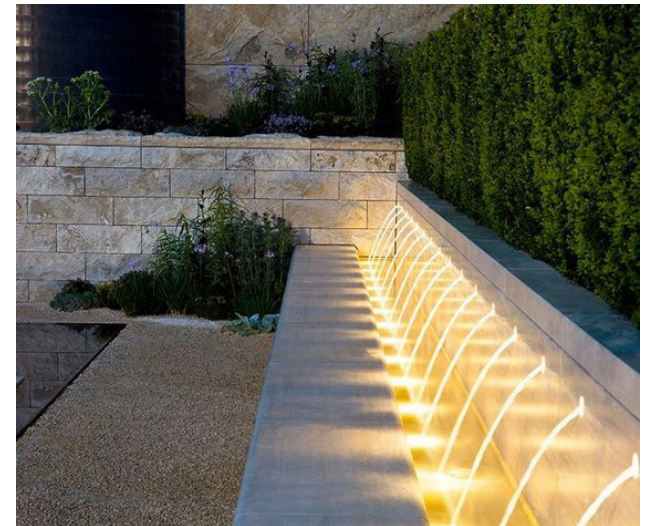
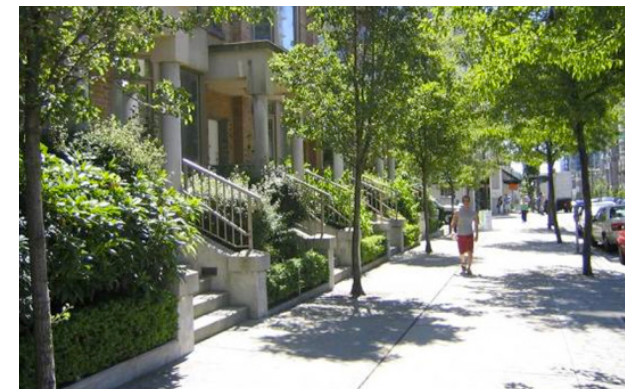
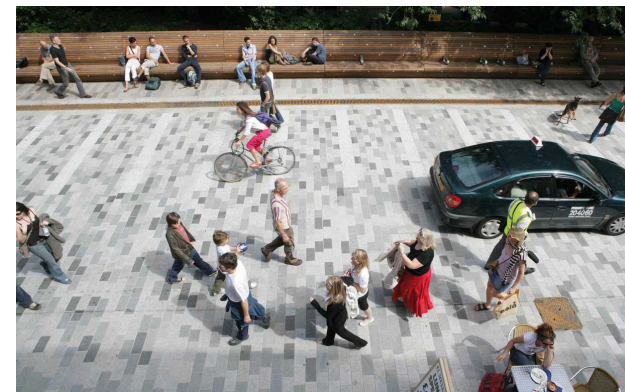
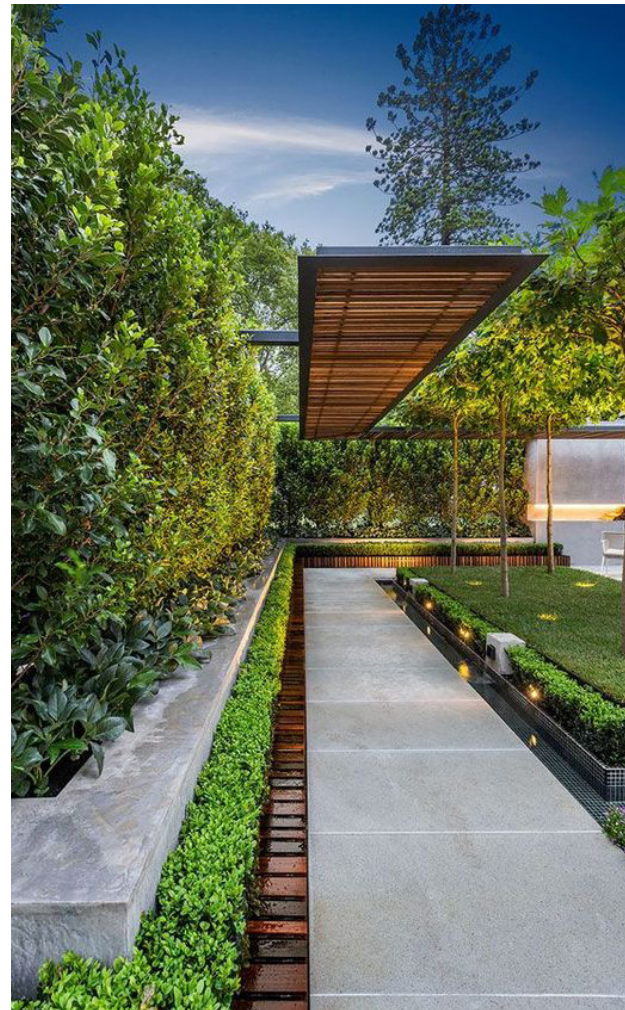
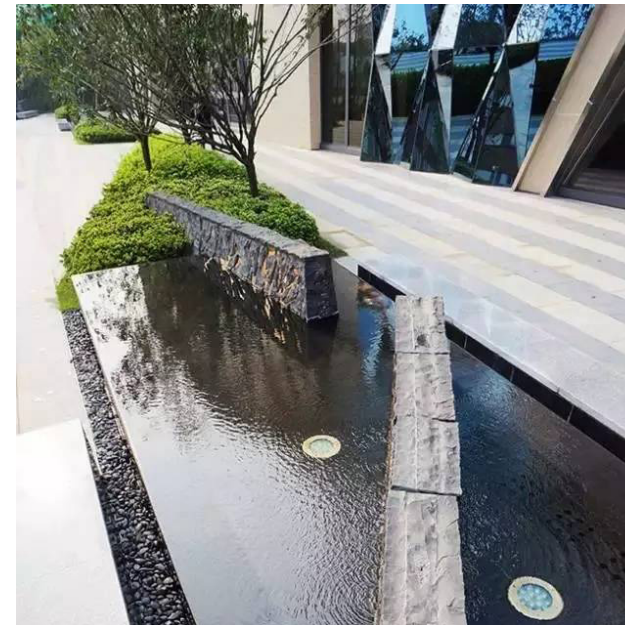
### Stormwater Management

Stormwater Management Diagram





# Inspirational Images





## Overall Public Realm Landscape Plan

The overall landscape plan correspond to the design rationale and combine them to create a connected, accessible, environmentally sustainable development.

A central City park area anchors the site and connects to a east west and north south axis to achieve accessibility throughout the site. Laneways within the site promotes further accessibility and connect to the proposed urban trail south of Alaska Street to provide connectivity to the larger neighbourhood context.

The private and public open space within the site forms an open space network.

Overall Landscape Plan



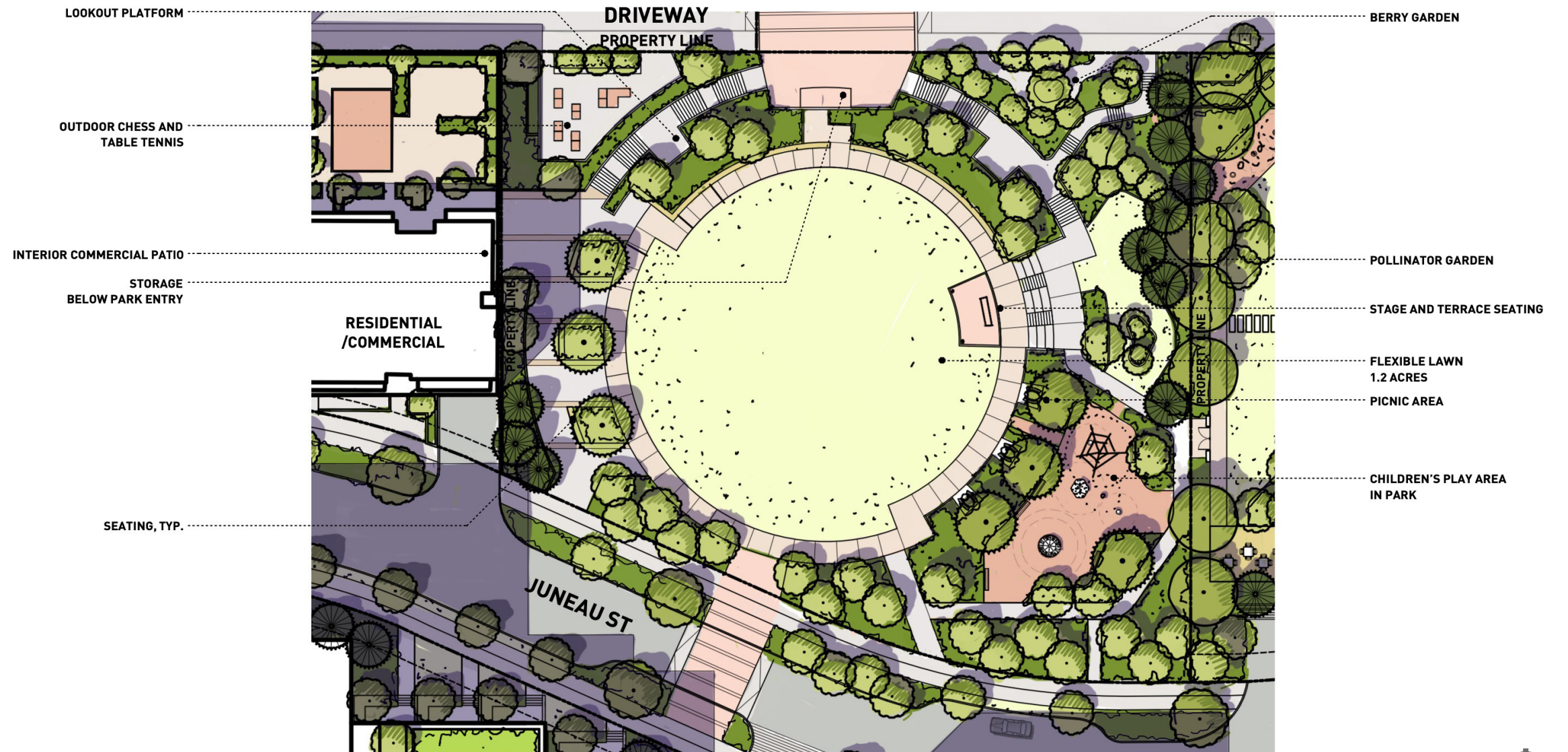


## Park

The defining feature of the development is the new City Park at its centre. The 1.14 acre park is a central gathering space for the community, with a large flexible lawn to accommodate different community events and needs. In addition, there are a number of other amenities within the park, including theme gardens, play areas, and picnic areas. The park will be a focal point for local residents and will likely be intensely used. The park also serves the important function of mitigating the significant grade change throughout the site, with a lookout, potential storage platforms, and stairs circulation.

The new City Park will be constructed and delivered to the City in Phase 2. At this time, appropriate program elements will be confirmed and an Operations Plan developed in collaboration with the City.

Illustrative Park Plan



Key Plan



NTS

NTS



## Park Circulation & Programming

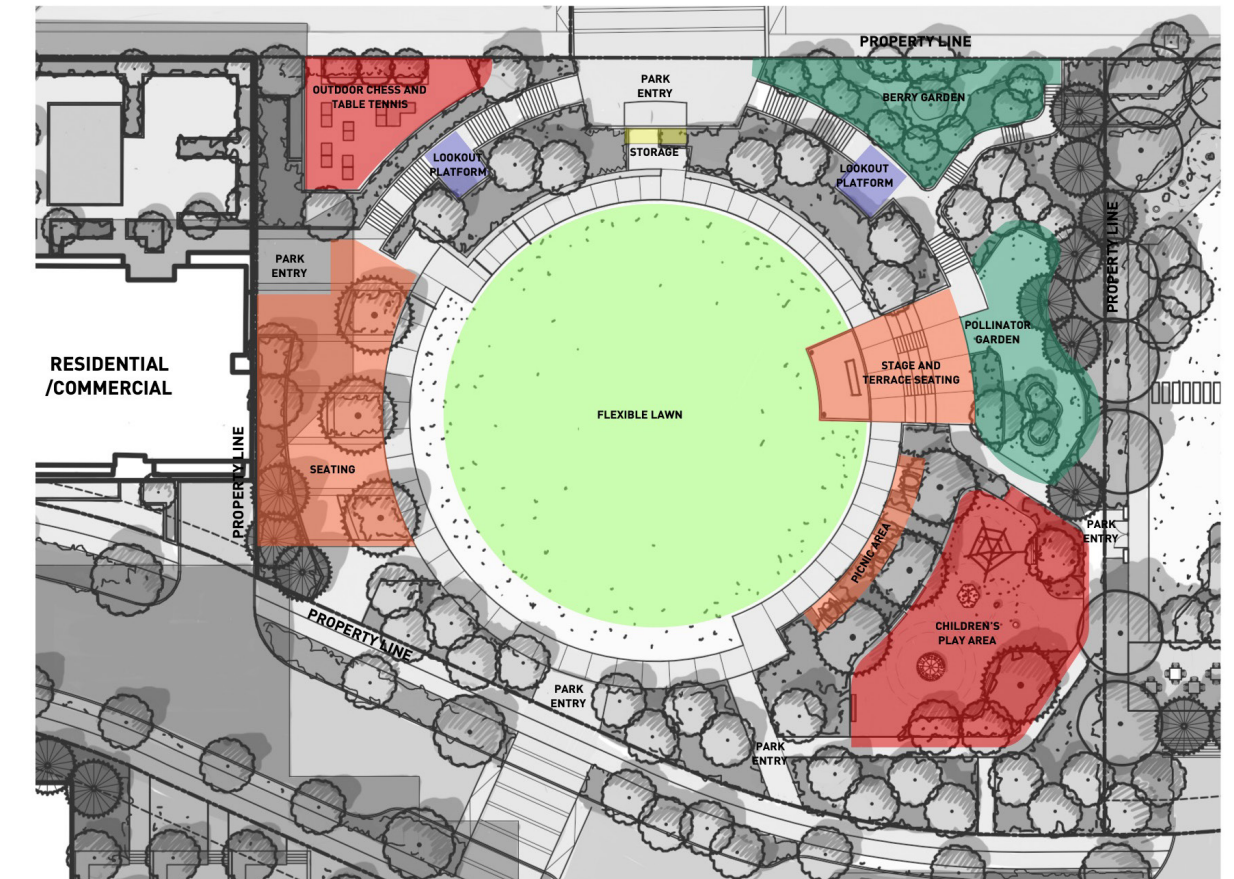
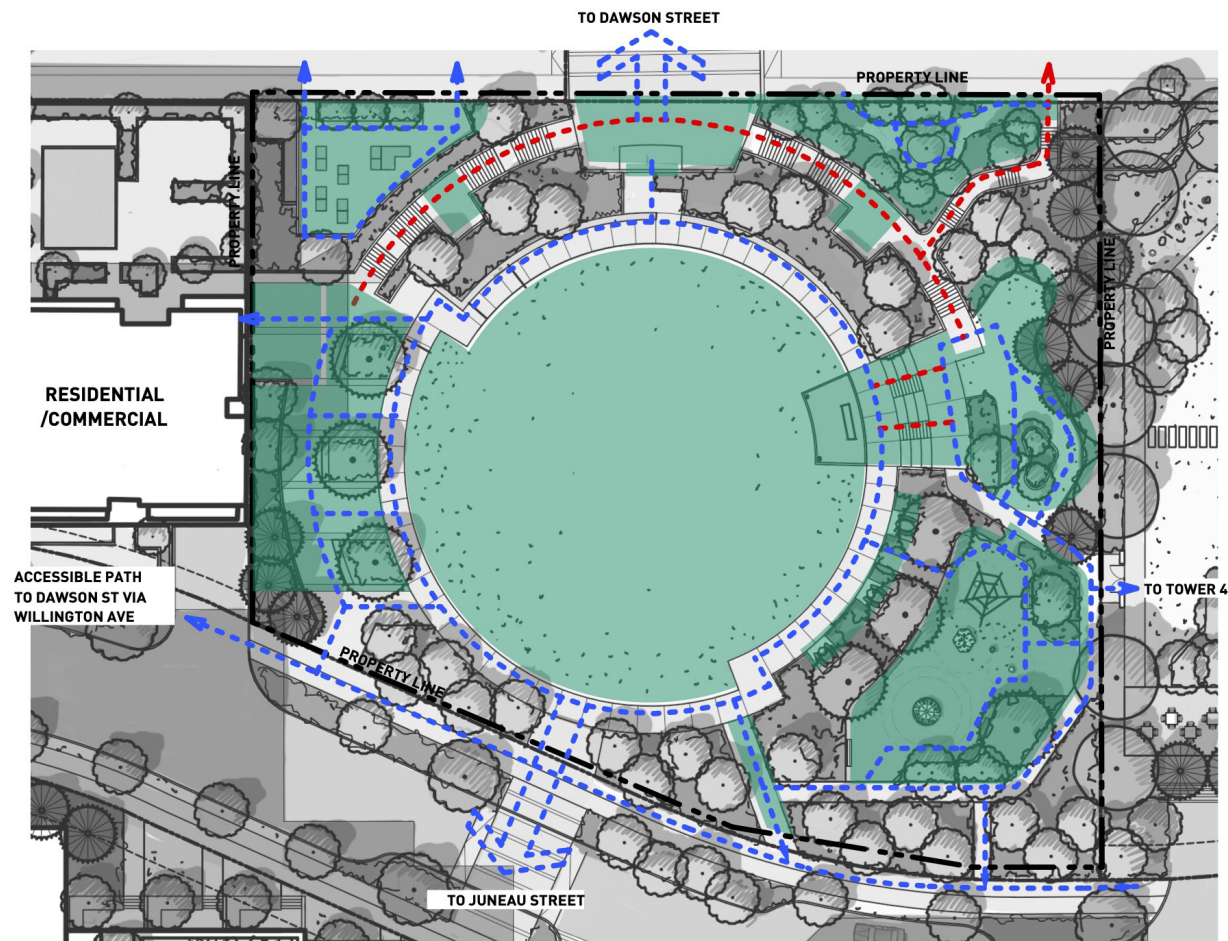
The site's varied topography has been incorporated into the design of the new City park in order to maximize pedestrian permeability through the site.

The design of the City park creates different zones with different park programming options. Most of the proposed uses are passive due to the number of nearby parks that feature active uses.

While the development and park interface are completely permeable, there are some measures taken to ensure the distinction between private and public property is clear. To the east, visual barriers such as planting edges, change in pavement, and decorated gates indicate the change in ownership. To the west, the edge is indicated by seating, changes in pavements, with potential for ramps and steps as a way to mitigate the private/public interface.

Park Circulation Diagram

Park Programming Diagram



- LEGEND**
- PARK PROGRAMING
  - ↔ PARK ENTRY
  - ↔ ACCESSIBLE PEDESTRIAN CONNECTION
  - ↔ NON-ACCESSIBLE PEDESTRIAN CONNECTION

- LEGEND**
- FLEXIBLE LAWN
  - BARRY GARDEN AND POLLINATOR GARDEN
  - LOOKOUT PLATFORM
  - STORAGE
  - SEATING AND PICNIC AREA
  - CHILDREN'S PLAY AND GAME AREA

