

Date	Issue / Revisions
18-1-30	Re-Issued for Suitable Plan of Development
18-2-9	Re-Issued for Suitable Plan of Development
18-6-22	Re-Issued for Suitable Plan of Development
18-11-18	Issued for 3rd Reading
18-11-18	Issued for 3rd Reading
19-1-14	Re-Issued for 3rd Reading
19-07-31	Issued for Suitable Plan of Development
19-08-29	Issued for Suitable Plan of Development V2



Seal



201-134 Abbott St
Vancouver BC
Canada V6B 2K4
T 604.669.1926
F 604.683.2241
info@nsda.bc.ca
www.nsda.bc.ca

Copyright Reserved. This plan and design is and at all times remains the exclusive property of NSDA Architects and cannot be used without the architects written consent.

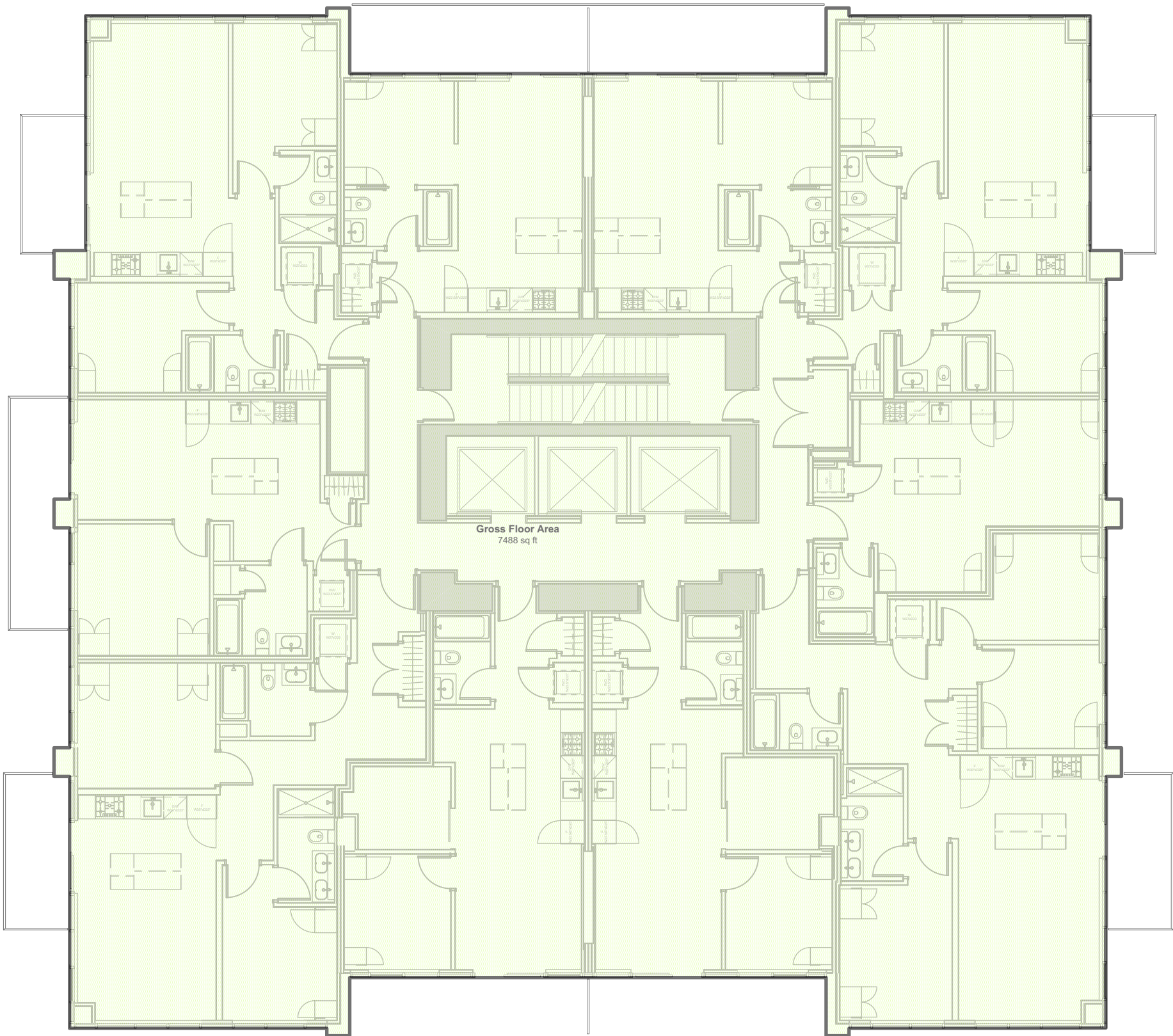
Design Consultant
RICHARD HENRY ARCHITECT INC.

Project
Telford Ave. Multi-Residential
6525 Telford Ave.
Burnaby, BC

Sheet Title
Level 05-06 Areas

Project Number
16046
Scale
3/32" = 1'-0"
Sheet Number

PPA 15.4R1



Date	Issue / Revisions
18-1-30	Re-Issued for Suitable Plan of Development
18-2-9	Re-Issued for Suitable Plan of Development
18-6-22	Re-Issued for Suitable Plan of Development
18-11-18	Issued for 3rd Reading
18-11-18	Issued for 3rd Reading
19-1-14	Re-Issued for 3rd Reading
19-07-31	Issued for Suitable Plan of Development
19-08-29	Issued for Suitable Plan of Development V2



Seal



201-134 Abbott St
Vancouver BC
Canada V6B 2K4
T 604.669.1926
F 604.683.2241
info@nsda.bc.ca
www.nsda.bc.ca

Copyright Reserved. This plan and design is and at all times remains the exclusive property of NSDA Architects and cannot be used without the architects written consent.

Design Consultant
RICHARD HENRY ARCHITECT INC.

Project
Telford Ave. Multi-Residential
6525 Telford Ave.
Burnaby, BC

Sheet Title
Level 07 Areas

Project Number
16046

Scale
3/32" = 1'-0"

Sheet Number

PPA 15.5R1

Date	Issue / Revisions
18-1-30	Re-Issued for Suitable Plan of Development
18-2-9	Re-Issued for Suitable Plan of Development
18-6-22	Re-Issued for Suitable Plan of Development
18-11-18	Issued for 3rd Reading
18-11-18	Issued for 3rd Reading
19-1-14	Re-Issued for 3rd Reading
19-07-31	Issued for Suitable Plan of Development
19-08-29	Issued for Suitable Plan of Development V2



Seal



201-134 Abbott St
Vancouver BC
Canada V6B 2K4
T 604.669.1926
F 604.683.2241
info@nsda.bc.ca
www.nsda.bc.ca

Copyright Reserved. This plan and design is and at all times remains the exclusive property of NSDA Architects and cannot be used without the architects written consent.

Design Consultant
RICHARD HENRY ARCHITECT INC.

Project
Telford Ave. Multi-Residential
6525 Telford Ave.
Burnaby, BC

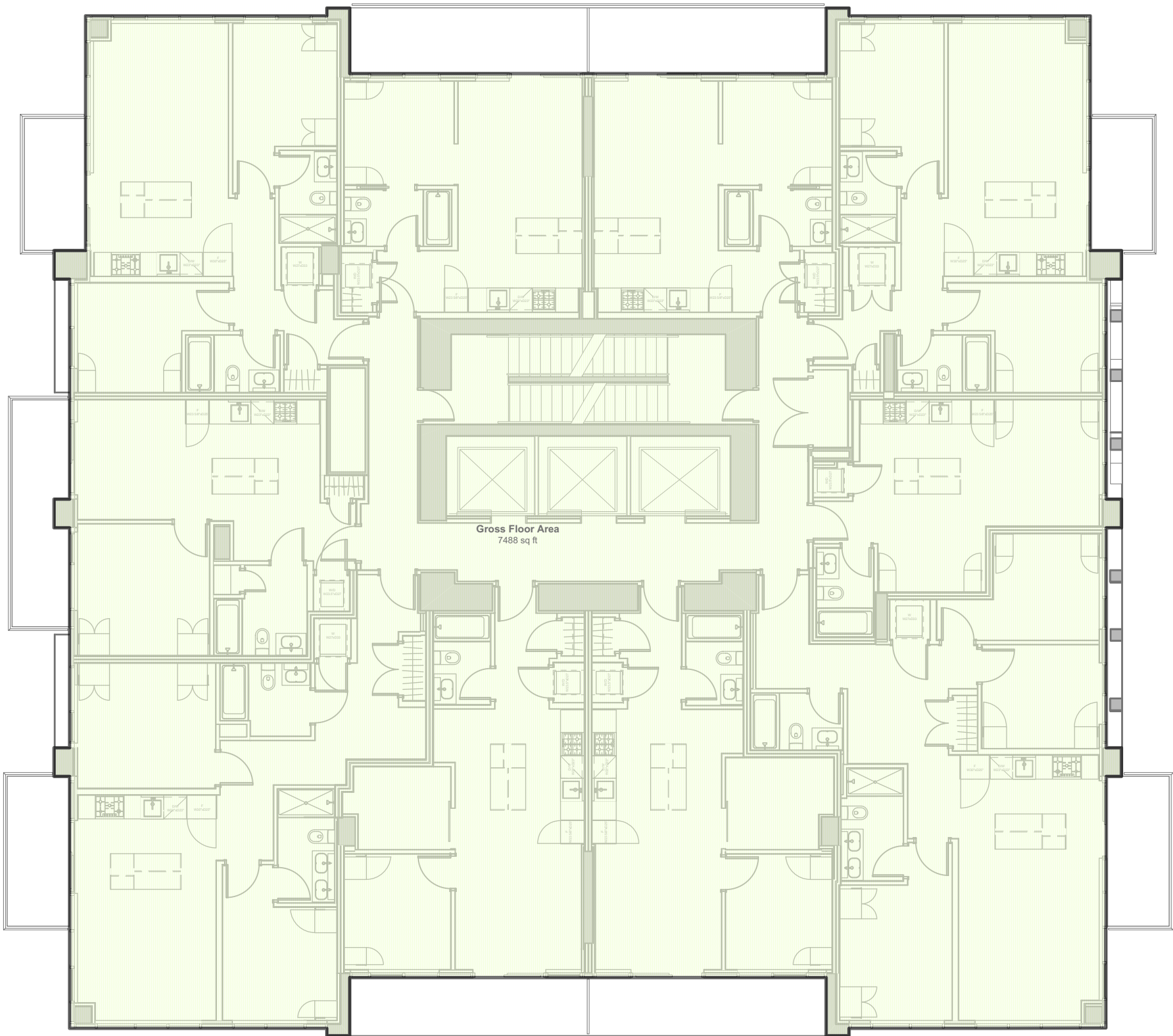
Sheet Title
Levels 08-20, 29-30 Areas

Project Number
16046

Scale
3/32" = 1'-0"

Sheet Number

PPA 15.6



Plan 26877

Date	Issue / Revisions
18-1-30	Re-Issued for Suitable Plan of Development
18-2-9	Re-Issued for Suitable Plan of Development
18-6-22	Re-Issued for Suitable Plan of Development
18-11-18	Issued for 3rd Reading
18-11-18	Issued for 3rd Reading
19-1-14	Re-Issued for 3rd Reading
19-07-31	Issued for Suitable Plan of Development
19-08-29	Issued for Suitable Plan of Development V2



Seal



201-134 Abbott St
Vancouver BC
Canada V6B 2K4
T 604.669.1926
F 604.683.2241
info@nsda.bc.ca
www.nsda.bc.ca

Copyright Reserved. This plan and design is and at all times remains the exclusive property of NSDA Architects and cannot be used without the architects written consent.

Design Consultant
RICHARD HENRY ARCHITECT INC.

Project
Telford Ave. Multi-Residential
6525 Telford Ave.
Burnaby, BC

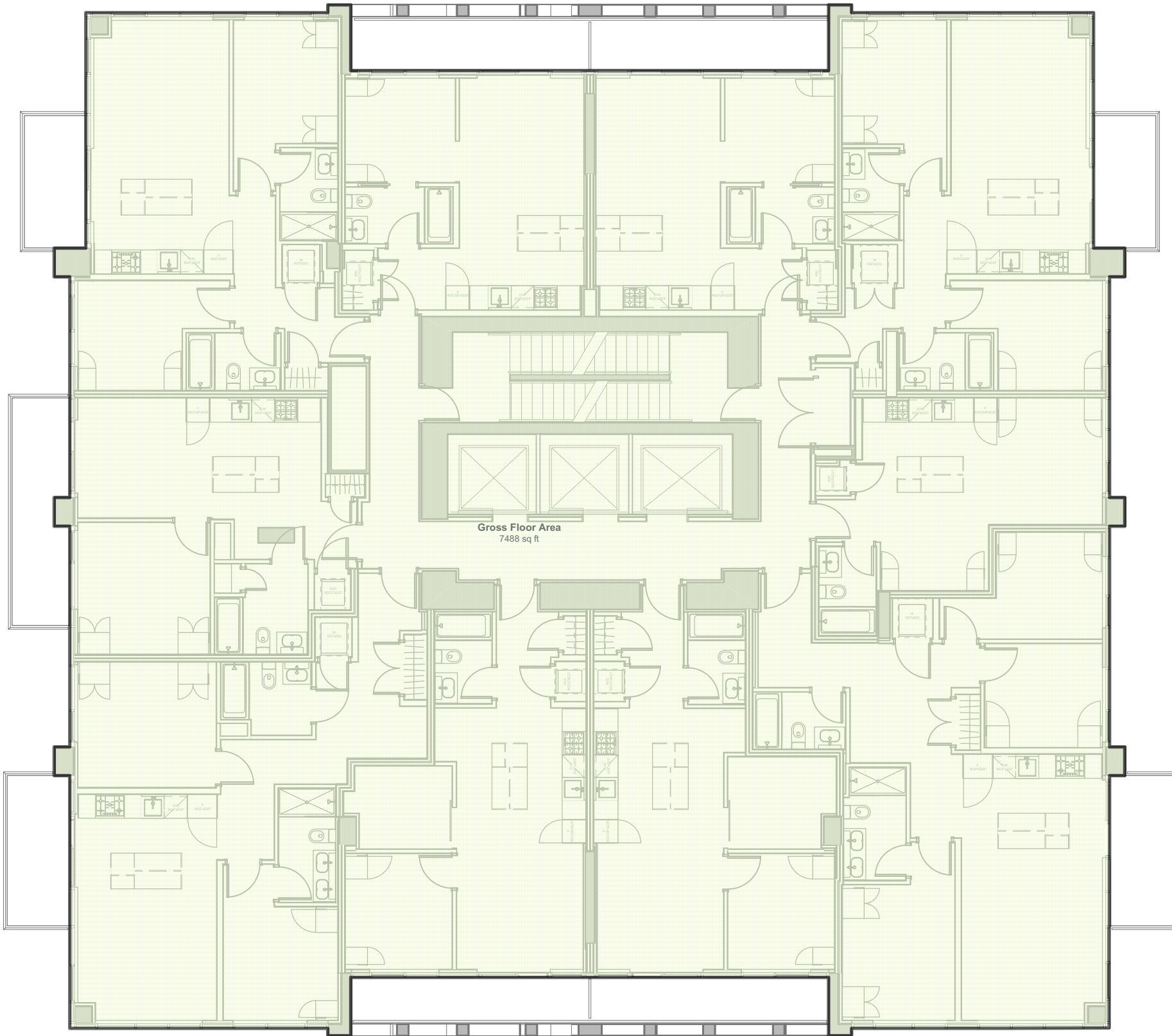
Sheet Title
Levels 21-28 Areas

Project Number
16046

Scale
3/32" = 1'-0"

Sheet Number

PPA 15.7



Date	Issue / Revisions
18-1-30	Re-Issued for Suitable Plan of Development
18-2-9	Re-Issued for Suitable Plan of Development
18-6-22	Re-Issued for Suitable Plan of Development
18-11-18	Issued for 3rd Reading
18-11-18	Issued for 3rd Reading
19-1-14	Re-Issued for 3rd Reading
19-07-31	Issued for Suitable Plan of Development
19-08-29	Issued for Suitable Plan of Development V2



Seal

NSDA
ARCHITECTS

201-134 Abbott St
Vancouver BC
Canada V6B 2K4
T 604.669.1926
F 604.683.2241
info@nsda.bc.ca
www.nsda.bc.ca

Copyright Reserved. This plan and design is and at all times remains the exclusive property of NSDA Architects and cannot be used without the architects written consent.

Design Consultant
RICHARD HENRY ARCHITECT INC.

Project
Telford Ave. Multi-Residential
6525 Telford Ave.
Burnaby, BC

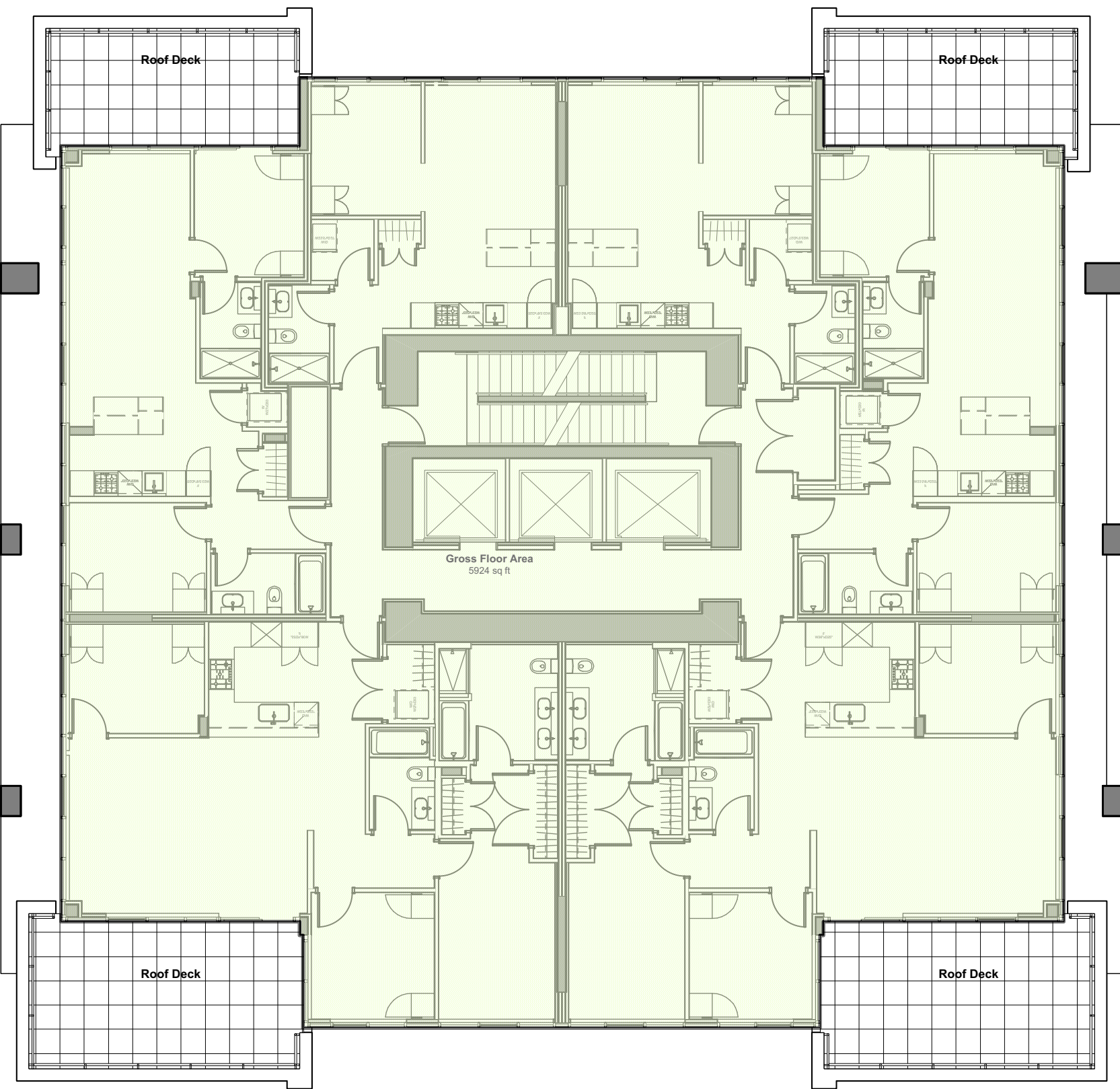
Sheet Title
Level 31 Areas

Project Number
16046

Scale
3/32" = 1'-0"

Sheet Number

PPA 15.8



Date	Issue / Revisions
19-07-31	Issued for Suitable Plan of Development
19-08-29	Issued for Suitable Plan of Development V2



Seal



201-134 Abbott St
Vancouver BC
Canada V6B 2K4
T 604.669.1926
F 604.683.2241
info@nsda.bc.ca
www.nsda.bc.ca

Copyright Reserved. This plan and design is and at all times remains the exclusive property of NSDA Architects and cannot be used without the architects written consent.

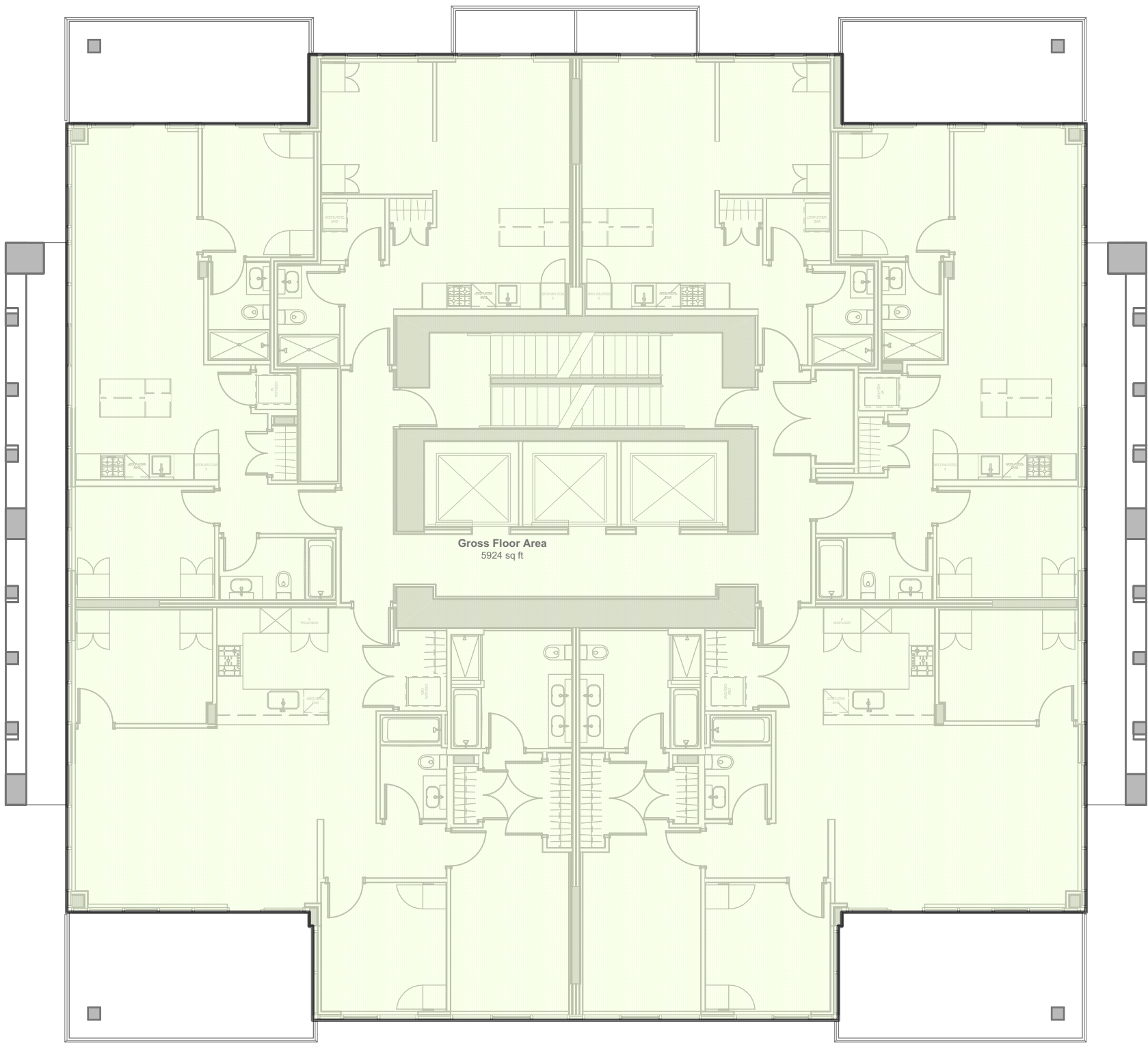
Design Consultant
RICHARD HENRY ARCHITECT INC.

Project
Telford Ave. Multi-Residential
6525 Telford Ave.
Burnaby, BC

Sheet Title
Levels 32-37 Areas

Project Number
16046
Scale
3/32" = 1'-0"
Sheet Number

PPA 15.9



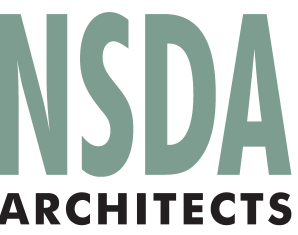
Plan 26877

Date	Issue / Revisions
19-07-31	Issued for Suitable Plan of Development
19-08-29	Issued for Suitable Plan of Development V2

- Floor Area, Gross
- Floor Area Exclusion



Seal



201-134 Abbott St
Vancouver BC
Canada V6B 2K4
T 604.669.1926
F 604.683.2241
info@nsda.bc.ca
www.nsda.bc.ca

Copyright Reserved. This plan and design is and at all times remains the exclusive property of NSDA Architects and cannot be used without the architects written consent.

Design Consultant
RICHARD HENRY ARCHITECT INC.

Project
Telford Ave. Multi-Residential
6525 Telford Ave.
Burnaby, BC

Sheet Title
Roof Level Areas

Project Number
16046

Scale
3/32" = 1'-0"

Sheet Number

PPA 15.10

Elevator Overrun

CONNECT LANDSCAPE ARCHITECTURE INC.
DOES NOT GUARANTEE THE EXISTENCE,
LOCATION, AND ELEVATION OF UTILITIES AND /
OR CONCEALED STRUCTURES AT THE PROJECT
SITE.

THE CONTRACTOR IS RESPONSIBLE FOR
DETERMINING THE EXISTENCE, LOCATION, AND
ELEVATION OF ALL UTILITIES AND / OR
CONCEALED STRUCTURES, AND IS
RESPONSIBLE FOR NOTIFYING THE
APPROPRIATE COMPANY, DEPARTMENT OR
PERSON(S) OF ITS INTENTION TO CARRY OUT ITS
OPERATIONS.

TELFORD RZ #17-26

LANDSCAPE SET: ISSUED FOR SUITABLE PLAN OF DEVELOPMENT V2

AUGUST 29, 2019

LANDSCAPE DRAWING INDEX

SHEET No.	SHEET NAME
L 0.0	COVER SHEET AND DRAWING LIST
L1.0	LANDSCAPE LAYOUT PLAN
L1.1	LANDSCAPE ENLARGEMENTS - AMENITY
L2.0	PLANT MATERIALS
L3.0	LANDSCAPE LIGHTING CONCEPT
L4.0	LANDSCAPE SECTIONS - LOW RISE
L4.1	LANDSCAPE SECTIONS - TOWER
L5.0	DETAILS - SOFTSCAPE
L5.1	DETAILS - HARDSCAPE
L5.2	DETAILS - FURNISHINGS

GENERAL NOTES

ALL LANDSCAPE ARCHITECTURAL DRAWINGS IN THIS PACKAGE SHALL BE READ
IN CONJUNCTION WITH ALL OTHER LANDSCAPE ARCHITECTURAL DRAWINGS,
DETAILS, SPECIFICATIONS, AND OTHER CORRESPONDANCE THAT MAY BE
ISSUED DURING THE COURSE OF THE CONTRACT.

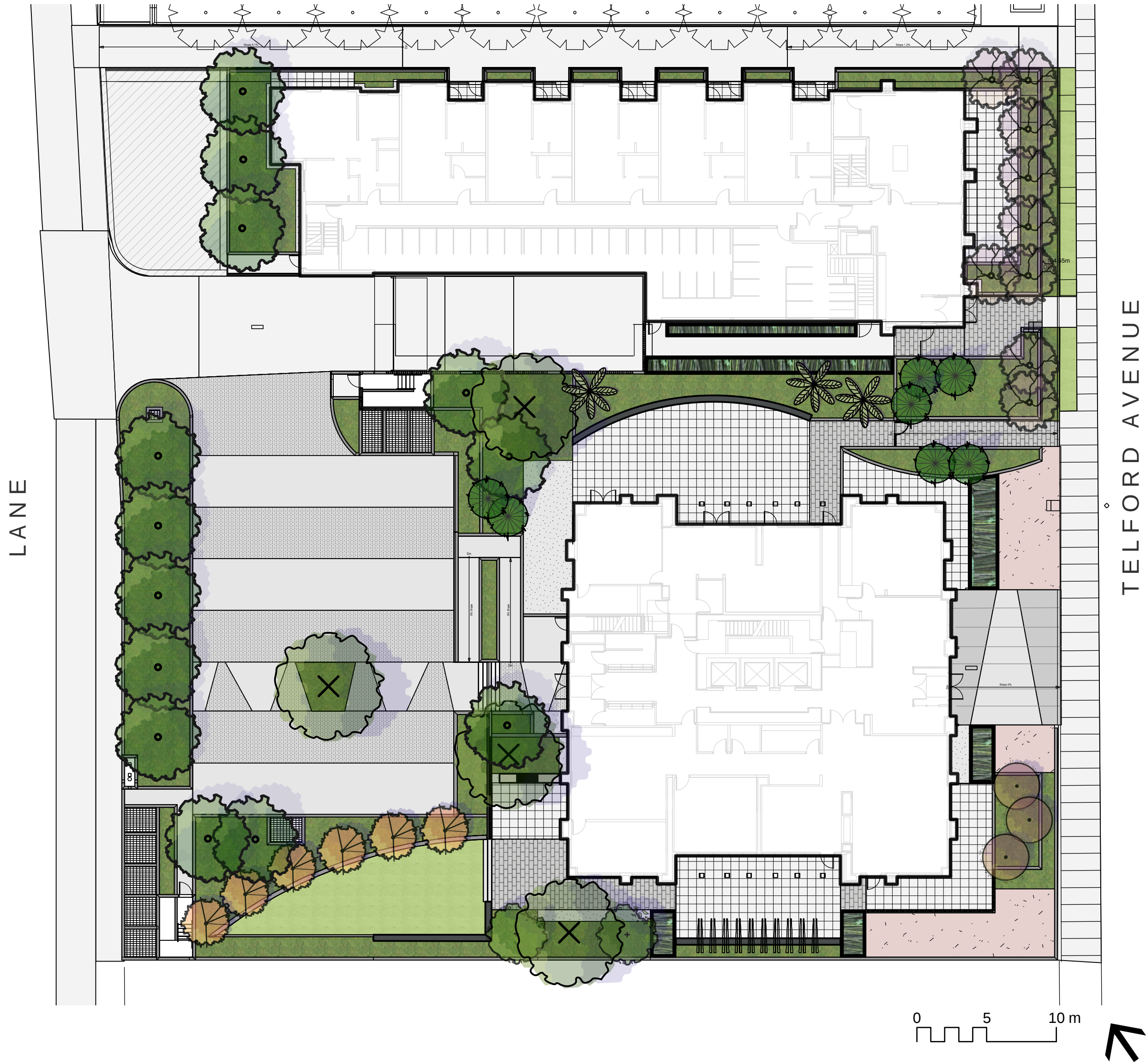
IF A DISCREPANCY OCCURS BETWEEN THE DRAWINGS AND THE SPECIFICATIONS
OR ANY OTHER DOCUMENT ASSOCIATED WITH THE PROJECT, THE CONFLICT
SHALL BE REPORTED IN WRITING TO THE LANDSCAPE ARCHITECT TO OBTAIN
CLARIFICATION AND APPROVAL BEFORE PROCEEDING WITH WORKS.

ALL EXISTING INFORMATION IS BASED ON AVAILABLE RECORDS AND SHALL NOT
BE CONSTRUED TO BE COMPLETE OR ACCURATE.

ALL PLANTING SHALL BE IN ACCORDANCE WITH BC LANDSCAPE STANDARD,
LATEST EDITION.

CONNECT LANDSCAPE ARCHITECTURE INC. DOES NOT GUARANTEE THE
EXISTENCE, LOCATION, AND ELEVATION OF UTILITIES OR CONCEALED
STRUCTURES AT THE PROJECT SITE.

FINAL SELECTION AND APPROVAL OF ALL STREET TREES TO BE DONE BY THE
CITY OF BURNABY.



5	ISSUED FOR SUITABLE PLAN OF DEVELOPMENT V2	19-08-29
5	ISSUED FOR SUITABLE PLAN OF DEVELOPMENT	19-07-31
4	RE-ISSUED FOR THIRD READING	19-01-14
3	ISSUED FOR THIRD READING	18-11-19
2	RE-ISSUED FOR SUITABLE PLAN OF DEVELOPMENT	18-03-28
1	RE-ISSUED FOR SUITABLE PLAN OF DEVELOPMENT	18-02-08

REVISIONS

Telford



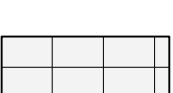




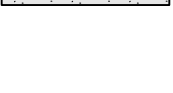
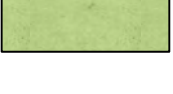





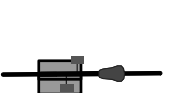

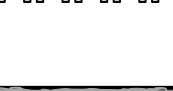


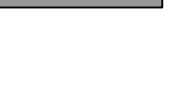
6525 Telford Avenue
Burnaby, British Columbia

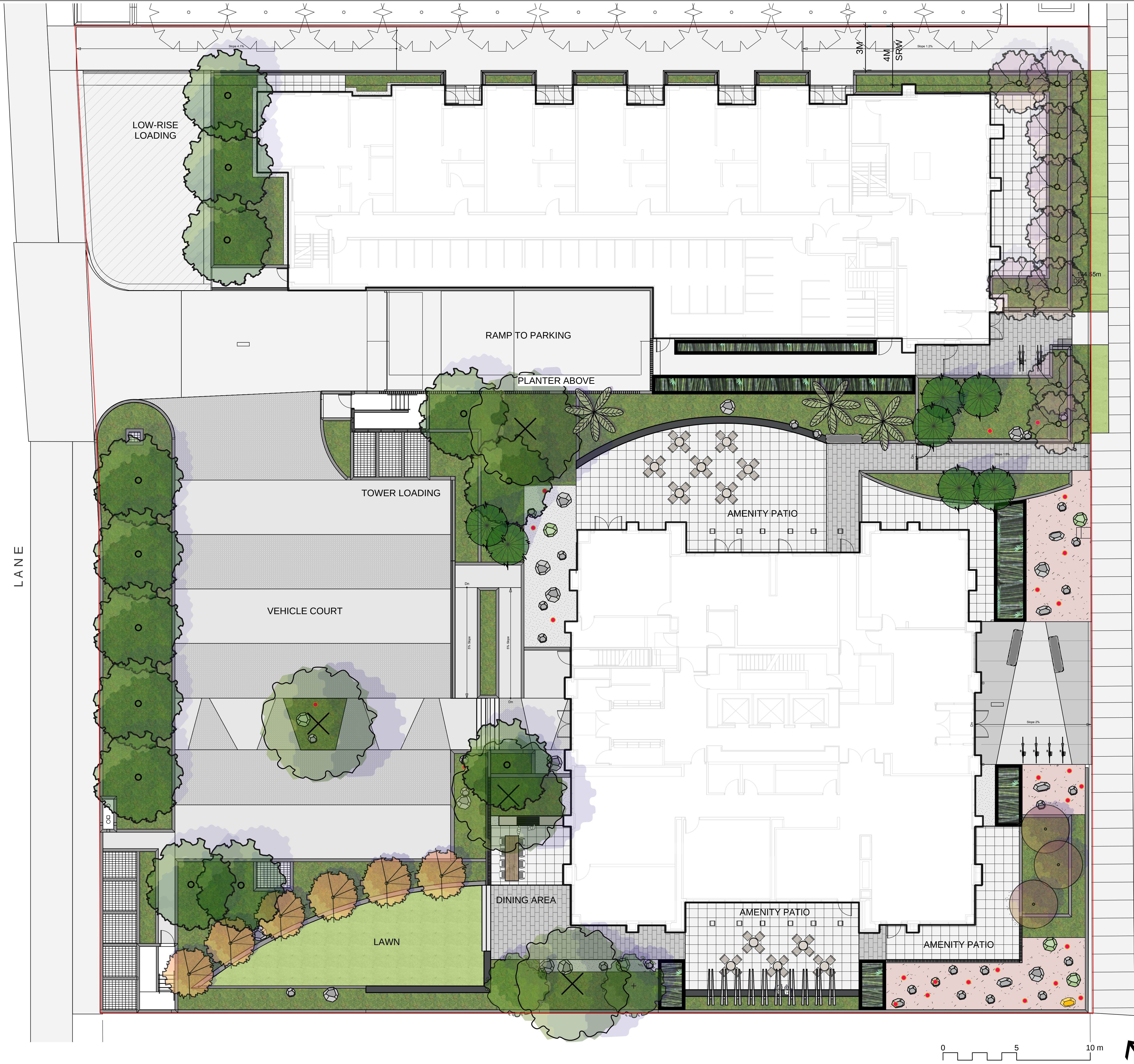
Scale:	1:250
Drawn:	KD
Reviewed:	DS
Project No.	06-536

LANDSCAPE
COVER SHEET
& DRAWING LIST

L0.0

MATERIALS LEGEND

CIP CONCRETE BROOM FINISH	
SEEDED CONCRETE PER PLANS AND DETAILS	
PATIO PAVERS 18" X 18" PAVERS	
PEDESTRIAN PAVERS PER PLANS AND DETAILS	
WOOD DECK PER PLANS AND DETAILS	
PROPOSED PUBLIC ART AREA TBD BY OTHERS	
GRAVEL EDGE PER PLANS AND DETAILS	
SOD LAWN PER PLANS AND DETAILS	
PLANTED AREA PER PLANS AND DETAILS	
RAISED CIP PLANTER PER PLANS AND DETAILS	
BAMBOO CIP PLANTER PER PLANS AND DETAILS	
PROPOSED TREE PER PLANS AND DETAILS	
SEATING BY LANDSCAPE FORMS	
BIKE RACK BY LANDSCAPE FORMS	
METAL TRELLIS PER PLANS AND DETAILS	
CUSTOM BASALT BENCH PER PLANS AND DETAILS	
BASALT BOULDER PER PLANS AND DETAILS	
CIP CONCRETE WALL PER ARCHITECTURE	
CIP CONCRET SEAT WALL PER PLANS AND DETAILS	
BBQ COUNTER PER PLANS AND DETAILS FINAL CONFIGURATION TBD BY INTRACORP	



CONNECT LANDSCAPE ARCHITECTURE INC.
DOES NOT GUARANTEE THE EXISTENCE,
LOCATION, AND ELEVATION OF UTILITIES AND /
OR CONCEALED STRUCTURES AT THE PROJECT
SITE.

THE CONTRACTOR IS RESPONSIBLE FOR
DETERMINING THE EXISTENCE, LOCATION, AND
ELEVATION OF ALL UTILITIES AND / OR
CONCEALED STRUCTURES, AND IS
RESPONSIBLE FOR NOTIFYING THE
APPROPRIATE COMPANY, DEPARTMENT OR
PERSON(S) OF ITS INTENTION TO CARRY OUT ITS
OPERATIONS.

5	ISSUED FOR SUITABLE PLAN OF DEVELOPMENT V2	19-08-29
5	ISSUED FOR SUITABLE PLAN OF DEVELOPMENT	19-07-31
4	RE-ISSUED FOR THIRD READING	19-01-14
3	ISSUED FOR THIRD READING	18-11-19
2	RE-ISSUED FOR SUITABLE PLAN OF DEVELOPMENT	18-03-28
1	RE-ISSUED FOR SUITABLE PLAN OF DEVELOPMENT	18-02-08
REVISIONS		

Telford

6525 Telford Avenue
Burnaby, British Columbia

Scale:	1:125
Drawn:	KD
Reviewed:	DS
Project No.	06-536

LANDSCAPE LAYOUT PLAN



CURVED SEATINGEDGE



MULTI-USE LAWN



BASALT PUBLIC ART ACCENTS



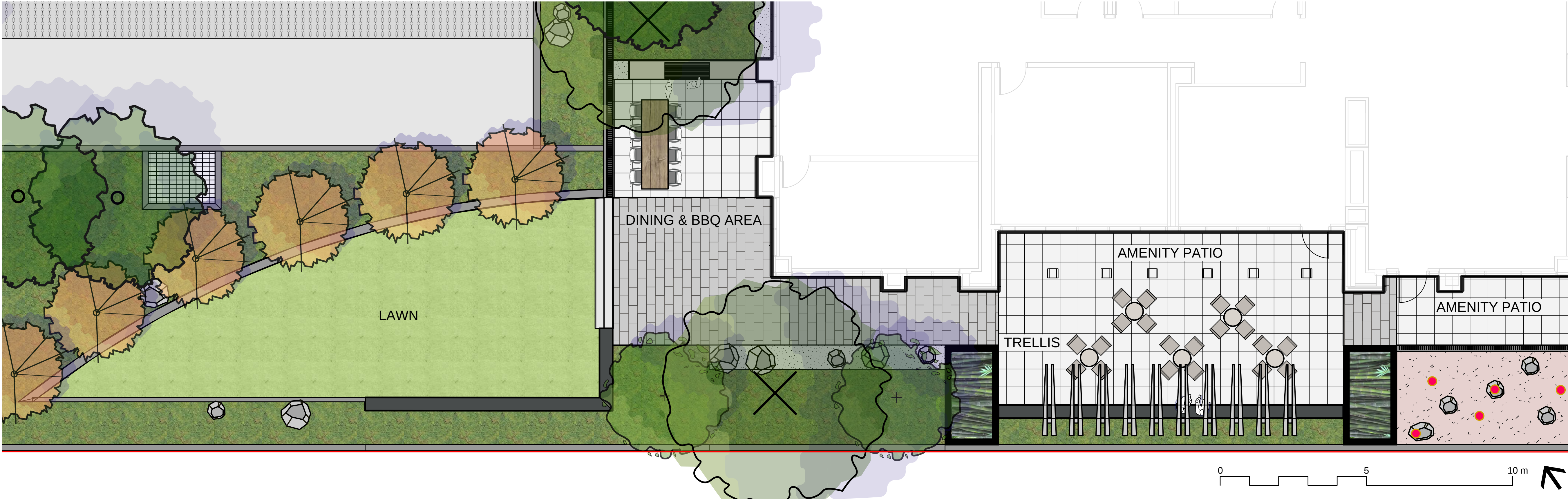
DINING AREA



BAMBOO SCREENING



OUTDOOR ROOMS



CONNECT LANDSCAPE ARCHITECTURE INC.
DOES NOT GUARANTEE THE EXISTENCE,
LOCATION, AND ELEVATION OF UTILITIES AND /
OR CONCEALED STRUCTURES AT THE PROJECT
SITE.

THE CONTRACTOR IS RESPONSIBLE FOR
DETERMINING THE EXISTENCE, LOCATION, AND
ELEVATION OF ALL UTILITIES AND / OR
CONCEALED STRUCTURES, AND IS
RESPONSIBLE FOR NOTIFYING THE
APPROPRIATE COMPANY, DEPARTMENT OR
PERSON(S) OF ITS INTENTION TO CARRY OUT ITS
OPERATIONS.

5	ISSUED FOR SUITABLE PLAN OF DEVELOPMENT V2	19-08-29
5	ISSUED FOR SUITABLE PLAN OF DEVELOPMENT	19-07-31
4	RE-ISSUED FOR THIRD READING	19-01-14
3	ISSUED FOR THIRD READING	18-11-19
2	RE-ISSUED FOR SUITABLE PLAN OF DEVELOPMENT	18-03-28
1	RE-ISSUED FOR SUITABLE PLAN OF DEVELOPMENT	18-02-08
REVISIONS		

Telford

6525 Telford Avenue
Burnaby, British Columbia

Scale:	1:75
Drawn:	KD
Reviewed:	DS
Project No.	06-536

LANDSCAPE
ENLARGEMENT - AMENITY