



St Helens Elementary School and Community Playground Grant Proposal:

Goal:

To accommodate and enhance the physical, mental and emotional growth of all children by creating a play environment inclusive to all children and all ages.

Objective:

- Reduce playground injuries
- Connect school and community by creating a safe place to meet and play
- Inspire our children to make physical activity a part of their daily life
- Encourage cognitive development and imagination
- Increase emotional confidence and foster social interaction and cooperation.
- Promote moderate-vigorous levels of physical activity that lead to strength, endurance, flexibility, balance and cardiovascular fitness.
- Increase the ability of our school to meet the provincial physical activity standards.

Play Environment Current Situation (See attached photos below):

- The expired play environment was dismantled, recycled and disposed of accordingly.
- The current play environment was assembled professionally and ready to use.
- The current play environment is accessible to the school students and the Burnaby heights community at large.
- Through donations and a variety of fundraising efforts, the budget for the playground environment was sought after and reached.
- The school community, staff, The Catholic Independent Schools of Vancouver and Parent Education Board of St. Helens have been informed and approve of the playground environment project.

Thank you for your time and consideration regarding the grant and playground environment.
Please feel free to contact us at any time regarding the project.

Sincerely,

Waldemar Sambor

St Helens School
Principal

Item #1 (i) of the Director's Report refers to this correspondence

CHAIRPERSON'S SIGNATURE



#14 – 7228 Progress Way
Delta, BC Canada
V4G 1H2
BC Toll-Free: 1-800-867-8141
Phone: 604-940-0087
Fax: 604-940-0162
Email: admin@rectecindustries.com

COST SPECIFICATION

QUOTATION NUMBER	
5312	
SALESPERSON	PAGE
Kathleen Trites	Page 1 of 2

Project	St. Helen's School Option 3C
---------	------------------------------

Customer
St Helen's School
3894 Triumph Street
Burnaby BC V5C 1Y7

Attention
Paul Mobilio
604-818-7716
pmobilio@telus.net

Cost Specification is valid for 30 days. VISA/Mastercard payments may incur a 3% surcharge. 2% per month interest on overdue accounts. Limits of liability: \$5 million

QUOTE DATE	PREPARED BY	F.O.B.	LEAD TIME	TERMS	LA
11/22/2019	DANIELLE	CZ Republic / Germany	12 - 14 Weeks	50% Deposit Required	
QTY	PRODUCT NUMBER	DESCRIPTION	UNIT PRICE	TOTAL	
1	COR10494	Kompan Corocord DRAGON DRAGONITE	46,102.00	46,102.00	
1	ELE400065	Kompan Elements TIPI CAROUSEL w/TOP BRACE	6,020.00	6,020.00	
1	GXY8014	Kompan Galaxy SPICA 1	2,618.00	2,618.00	
1	GXY8016	Kompan Galaxy SPICA 3	2,618.00	2,618.00	
1	ELE400024	Kompan Elements SPINNER BOWL	1,666.00	1,666.00	
-1	DISCOUNT	Manufacturer's Discount	5,902.00	-5,902.00	
1	PLAYFALL 1.75"	PlayFALL Tiles, 1.75" Green, Black, or Terra Cotta To cover an area 1555 sq. ft. 1.75" thickness and a 2" Playpad rated to an 8' fall height Includes adhesive Landscape fabric not included, but recommended COLOR: BLUE	17,736.00	17,736.00	
1	INST2	Supervised Installation Scope of work: - Supervision of new play equipment installation - No tools or excavation/lifting equipment included NOTE: Does not include supervision of Playfall tile installation. Supervised install is to take place on a weekend and is a maximum of 2 days.	4,080.00	4,080.00	
1	DEL1	Delivery: From Out Of Province	3,010.00	3,010.00	
1	DEL2	Delivery: In Province *PST Exempt	515.00	515.00	

Continued on page 2...



#14 - 7228 Progress Way
Delta, BC Canada
V4G 1H2

BC Toll-Free: 1-800-667-8141
Phone: 604-940-0067
Fax: 604-940-0162
Email: admin@rectecindustries.com

COST SPECIFICATION

QUOTATION NUMBER	
5312	
SALESPERSON	PAGE
Kathleen Trites	Page 1 of 2

Project	St. Helen's School Option 3C
---------	------------------------------

Customer
St Helen's School
3894 Triumph Street
Burnaby BC V5C 1Y7

Attention
Paul Mobilio
604-818-7716
pmobilio@telus.net

Cost Specification is valid for 30 days. VISA/Mastercard payments may incur a 3% surcharge. 2% per month interest on overdue accounts. Limits of liability: \$5 million

QUOTE DATE 11/22/2019	PREPARED BY DANIELLE	F.O.B. CZ Republic / Germany	LEAD TIME 12 - 14 Weeks	TERMS 50% Deposit Required	LA	
QTY	PRODUCT NUMBER	DESCRIPTION			UNIT PRICE	TOTAL

Important Notes: Please read secondary page(s) for important conditions and/or agreements that will require additional signatures. We require signatures on all Cut Sheets. To ensure safe and efficient projects there are often several factors to consider: installation by a certified installer, compliant equipment layout, resilient ground cover under all playground equipment, site preparation requirements, site access, ground conditions, local codes, and supplier specifications. Should you wish to proceed with this order, please sign where indicated and return by fax or email and advise your purchase order number. Thank you for this opportunity!

SUB-TOTAL	\$78,463.00
5% GST	\$3,923.15
7% PST	\$5,170.76
TOTAL QUOTE	\$87,556.91

Signature to be used as Purchase Order and
Acceptance of Install Conditions

Date



RECTEC INDUSTRIES

#14 - 7228 Progress Way
Delta, BC Canada
V4G 1H2

BC Toll-Free: 1-800-667-8141
Phone: 604-940-0067
Fax: 604-940-0162
Email: admin@rectecindustries.com

Purchase Agreement for Supervised Playground Installation

November 22, 2019
St. Helen's School, Burnaby

Thank you for selecting Kompan as your playground manufacturer of choice. RecTec is committed to providing our highest level of customer service to ensure your project runs smoothly. Please acknowledge the following by signing your initials in each box and adding your signature to the bottom of this form.

This project will be a "# of days" commitment from your volunteers. A minimum of 10 - 12 people will be required, along with an experienced Bobcat operator. All volunteers will work only on the playground installation and not on anything else. Work days run from 8:00 - 4:00.

☐

All tools on the attached checklist will be available on site for the duration of the project. Failure to notify RecTec of any tool shortages could lead to delays and extra charges.

☐

The playground equipment will arrive on site between Monday and Friday and will arrive on a large truck. RecTec is not responsible for receiving or unloading the shipment.

☐

The Supervisor's word on site will be taken as final. Any damage due to inattentive workmanship is not covered by warranty and could lead to delays and extra charges to complete the installation.

☐

Volunteers are not covered by WorkSafe through RecTec Industries Inc. or the Supervisor. Regarding on-site insurance and liability, our Supervisor is acting solely as the Product Assembly & Quality Control Overseer and not as the project's general contractor. Liability and insurance are the responsibility of the school, school PAC and school district.

☐

All digging requires clearance by BC One Call (1-800-474-6886) no more than two weeks before work begins. Clearance documents must be present on site.

☐

Depending on when your safety surfacing is delivered & installed and when the playground is inspected, caution tape and/or fencing will be required to keep the children out.

☐

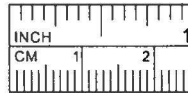
Signature

Date

Printed Name & Title

Company Name

St. Helen's School Option 3C



**FOR QUOTING ONLY
NOT FOR CONSTRUCTION**

Client: St. Helen's School
Date: November 22, 2019

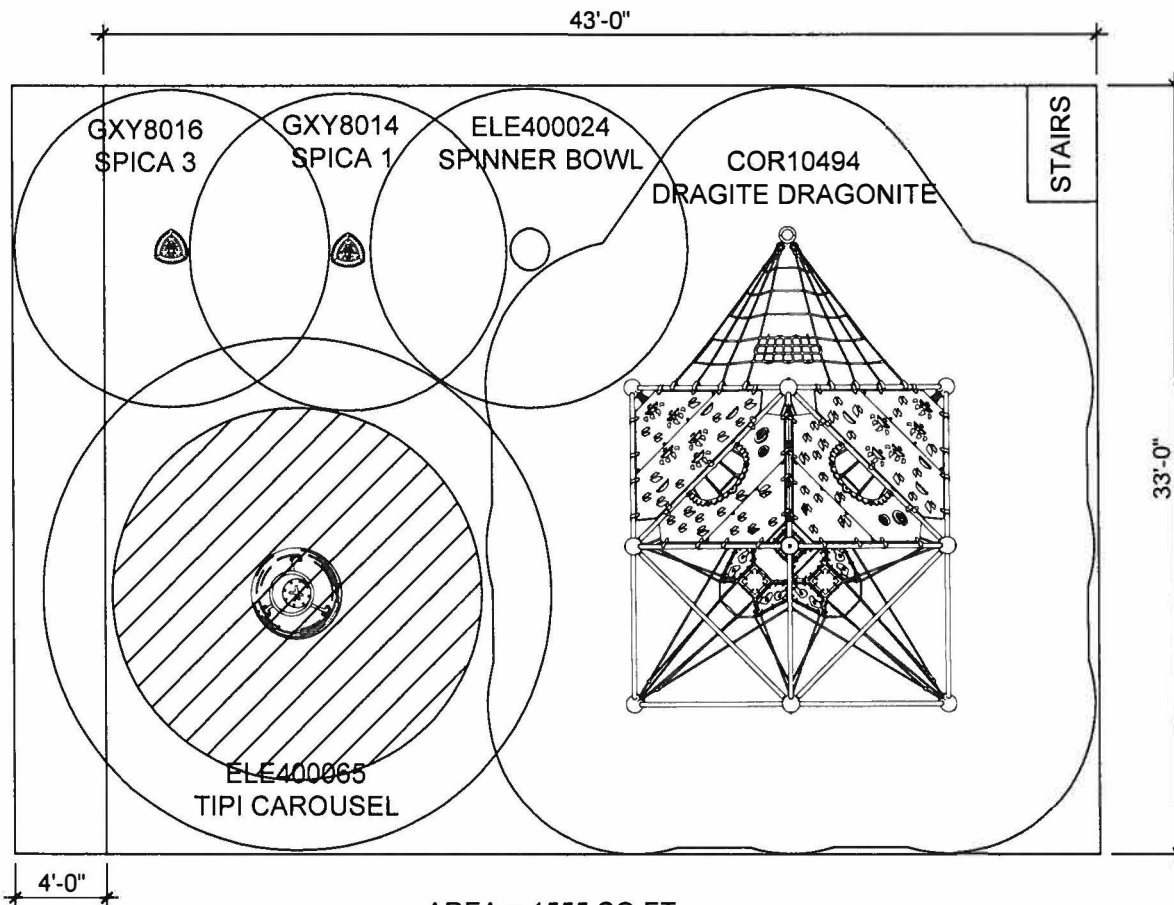
Scale: 1/8"=1'-0"

Site layout is in accordance with CSA Z614-14

Please contact RecTec for any assembly and construction questions

DESIGNERS

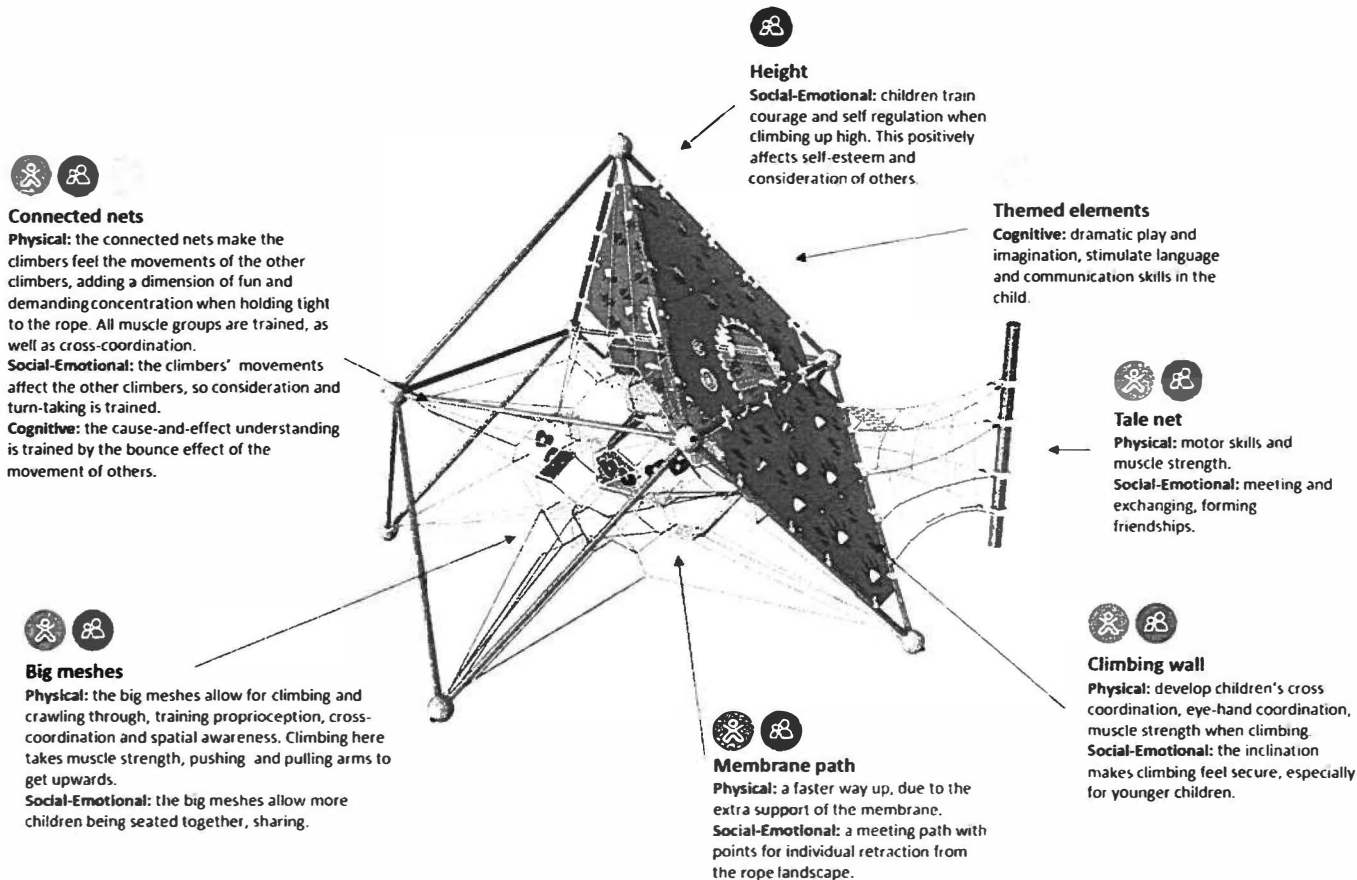
Drawn By: DC
Checked By: KT
Issued By: KT



DRAGITE DRAGONITE

COR10494

KOMPAN
Let's play



Item no. COR104941-0401

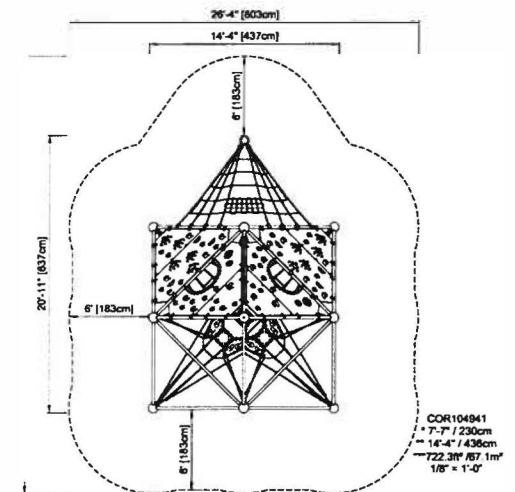
General Product Information

Dimensions LxWxH 14'4" x 20'11" x 14'4"

Age Group 5-12

Play Capacity 35 children

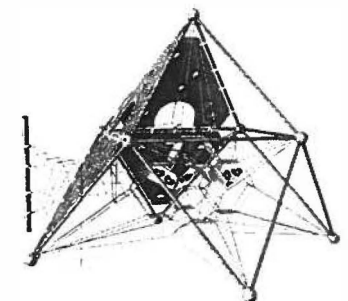
Color Options



The impressive Dragite Dragonite attracts attention with its vibrant colors and whimsical details. The richness in play variation invites children play for a long time. The graded challenges in climbing enhances the play experience and play outcomes. The Dragite in short makes children want to come back again and again. The bouncy interconnected nets and

membranes make everything move when children climb. This supports concentration and muscles as children hold tight when climbing up high. The height also strengthens spatial awareness. The climbing walls add variation to climbing. They create a front and back of the structure and facilitate rules play, e.g. hide and seek. The net tail makes a fine retreat point for

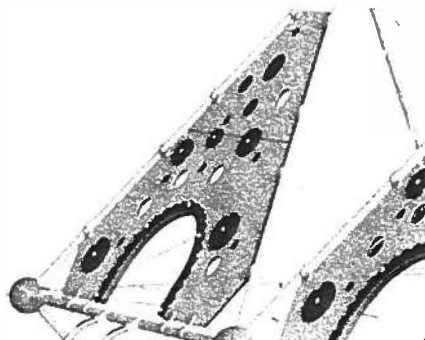
quieter exchanges with friends. The play benefit of the Dragite is thrill – a collective climbing experience that trains the proprioception, which is an important tool of the body!



Data is subject to change without prior notice.

DRAGITE DRAGONITE

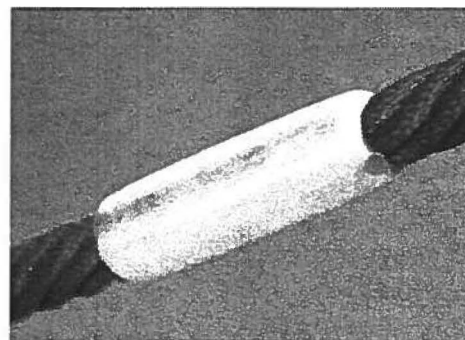
COR10494



Climbing panel of 0.7" EcoCore™ HDPE. EcoCore™ is a highly durable, ecofriendly material, which is not only recyclable after use, but is also built around a core produced from 100% recycled material.



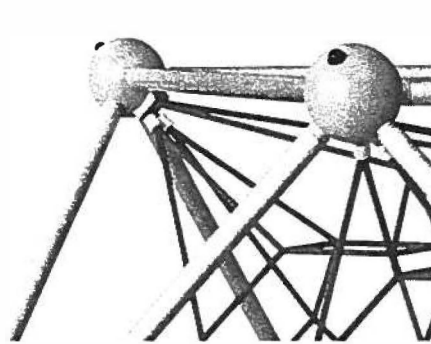
Corocord 'S' clamps are used as universal connections in Corocord products. They are of stainless steel with a diameter of 0.3". The ends are rounded-off, and the whole clamp is pressed around the rope, using a special hydraulic press. Therefore, they cannot be removed using conventional tools.



The aluminum swages of the net are double conical with rounded ends and are as small as safety allows use. The construction of the net ensures, so that these metal parts, are kept to a minimum size and number in the rope structure in order to provide best possible rope climbing experience.



Corocord membranes consist of friction-proof rubberized material of conveyor belt quality with excellent UV resistance. Tested and compliant with strict PAH requirements. Embedded is a four-layered armoring made of woven polyester. The armoring and the two surface layers result in a total thickness of 0.3".



The steel structure is hot dip galvanized inside and outside with lead free zinc.



LUNA



MARS



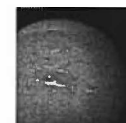
SOLARIS



VENUS



TERRA



NEPTUNE

The COROCORD Frame Nets are available in 6 galactic color themes. The themes draw on bright colors that appeals to children of all ages. Can be changed in the configurator.

Item no. COR104941-0401

Installation Information

Max. fall height	7'7"
Safety surfacing area	722,3ft²
Numbers of Installers (persons)	2
Total installation time	46
Excavation volume	4,38 yd³
Concrete volume	2,6 yd³
Footing Depth (Standard)	3' 7"
Shipment Weight	2748 lbs
Anchoring options	Surface ✓

Warranty information

Climbing Panels	Lifetime
Corocord rope	10 Years
Galvanized steel parts	10 Years
Membranes	2 Years
Spare parts guaranteed	10 Years

Elevated Activities 0	Accessible Elevated Activities	Accessible Ground Level Activities	Accessible Ground Level Play Types
Present	0	1	1
Required	0	1	1

KOMPAN Product Info

TIPI CAROUSEL W/ TOP BRACE - ELE400065



Best User Age: **5-12 years***

Footings: In-ground posts
Surface installation also available

ADA ANALYSIS	Elevated Activities 0	Accessible Elevated Activities	Accessible Ground Level Activities	Accessible Ground Level Play Types
Present	0	1	1	
Required	0	1	1	



SPINNING

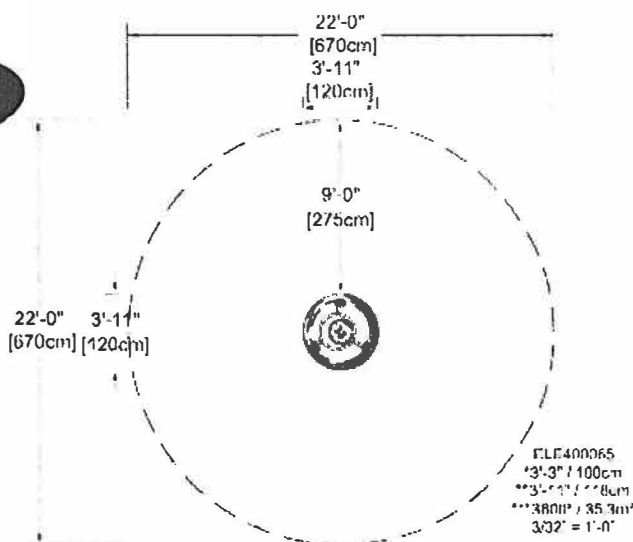


EXPERIMENTING



The Tipi Carousel with top brace is a fun and thrilling play starter for social and physical play. Tipi is an all ability, inclusive piece for children 4 and up. The Tipi is a spacious, inclusive spinner, which welcomes all to whirl while lying, sitting or standing, with great support from the top brace. The Tipi invites and encourages social play, children helping each other on and off the carousel, pushing and pulling it to add speed to the play.

Product Line	Traditional Play
Category	Supernova, carousels & spinners
Age from	4-15
Max. fall height (CM)	100
Total height (CM)	118



To verify product certification, visit www.ipema.org

- * = Highest designated play surface.
- ** = Total height of product.
- *** = Total area of safety zone.

Highest designated play surface, space required and total area of safety zone are according to CSA Z614.

Equipment must be installed over resilient surfacing appropriate to the safety guidelines in your area.

Product development is an ongoing process. We reserve the right to make modifications on all our products. This product may not be mirrored, scaled or altered in any way. Safety zones must be retained for proper placement of equipment. If any changes are required, please contact your KOMPAN representative at 1.800.426.9788.

KOMPAN Product Info

SPICA 1 - GXY8014



GALAXY

Best User Age: 5-12 years

Footings: In-ground installation
Surface installation also available

Technical information available at kompan.com

ADA ANALYSIS

Present
Accessible
Required

Elevated Activities

0
0
0

Ground Level Activities

1
1
1

Ground Level Play Types

1
1
1

The Spica is a uniquely designed piece of rotating play equipment. A lot of experimentation is needed to master the Spica and control its speed. First, a child steps onto the triangular plate and pushes off with their foot. Then they discover that as they use their arms to pull their body toward the support handle, they spin faster! As they move their center of gravity away from the handle, they slow down. It doesn't take up a lot of space, and more than one child may play on it simultaneously.



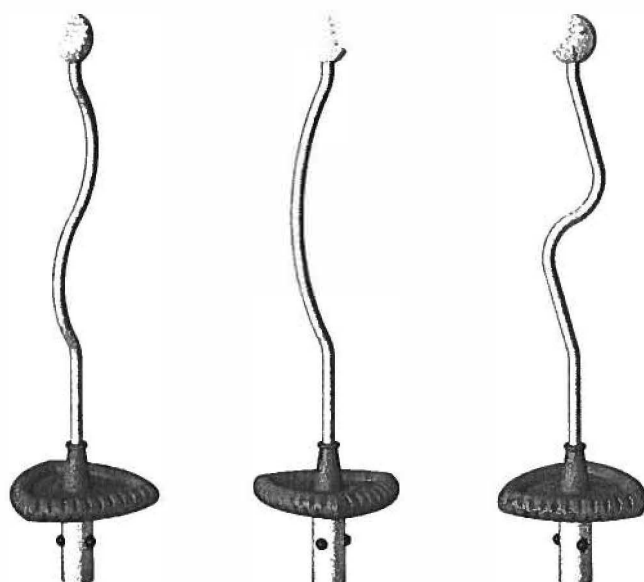
SPINNING



GATHERING



EXPERIMENTING



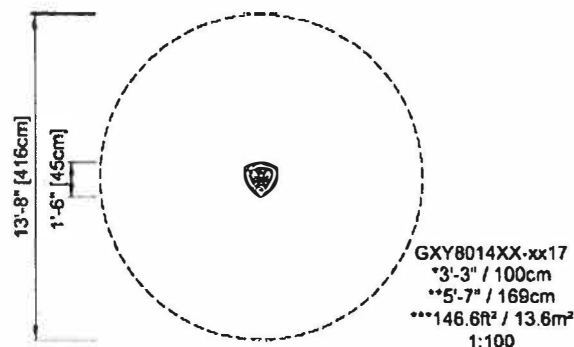
GXY8014

GXY8015

GXY8016



Product Line	Traditional play
Category	Supernova, carousels & spinners
Age from	5-12
Max. fall height (CM)	100
Total height (CM)	169



To verify product certification, visit www.ipema.org

* = Highest designated play surface.
** = Total height of product.
*** = Total area of safety zone.

Highest designated play surface, space required and total area of safety zone are according to CSA Z614.

Equipment must be installed over resilient surfacing appropriate to the safety guidelines in your area.

Product development is an ongoing process. We reserve the right to make modifications on all our products. This product may not be mirrored, scaled or altered in any way. Safety zones must be retained for proper placement of equipment. If any changes are required, please contact your KOMPAN representative at 1.800.426.9788.

KOMPAN Product Info

SPINNER BOWL - ELE400024



Best User Age: **4-12 years**

Footings: In-ground installation
Surface installation also available

Technical information available at kompan.com

ADA ANALYSIS

Present
Accessible
Required

Elevated Activities

0
0
0

Ground Level Activities

1
1
1

Ground Level Play Types

1
1
1



The Spinner Bowl is a load of fun for all ages! Originally designed for the purpose of experimental sand play, children love to climb inside for a spin of their own. A thrilling ride that also provides the physical benefits of vestibular stimulation and excellent balance training, the Spinner Bowl can be enjoyed by all.



SPINNING EXPERIMENTING

General Product Information

Dimensions LxWxH

Age Group

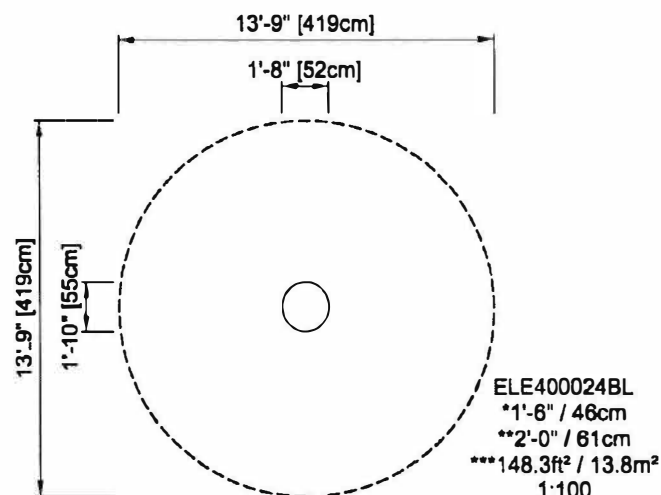
Play Capacity

Color Options

1'11" x 1'8" x 2"

5+

1 child



* = Highest designated play surface.
** = Total height of product.
*** = Total area of safety zone.

Highest designated play surface, space required and total area of safety zone are according to CSA Z614.

Equipment must be installed over resilient surfacing appropriate to the safety guidelines in your area.

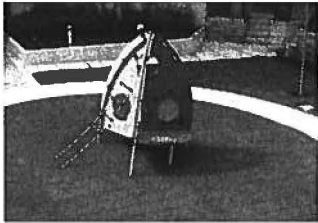
Product development is an ongoing process. We reserve the right to make modifications on all our products. This product may not be mirrored, scaled or altered in any way. Safety zones must be retained for proper placement of equipment. If any changes are required, please contact your KOMPAN representative at 1.800.426.9788.

To verify product certification, visit www.ipema.org



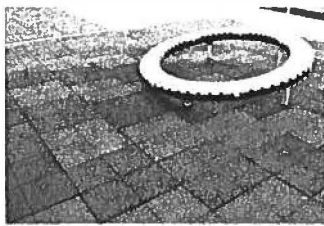
playfall[®]
Safety Surfacing System

Technical Data Sheet: PlayFall[®]



When kids play, they also fall, and that's where PlayFall[®] comes to the rescue. PlayFall[®] is designed to meet stringent ASTM requirements for playground fall protection and is available in a variety of thicknesses to match the fall heights of most play equipment and events.

Don't play on anything less!



PlayFall[®] Tile Details

- Tiles are 2' x 2' and feature a 1' x 1' cross-hatch surface pattern
- Available in 1.75" thickness with PlayPad underlayments
- Slip resistant
- Minimal maintenance
- Porous for effective drainage
- Quick interlocking installation with plastic pins and minimal adhesive
- Made from 100% recycled SBR truck tire rubber buffings and granules in a non-toxic polyurethane binder

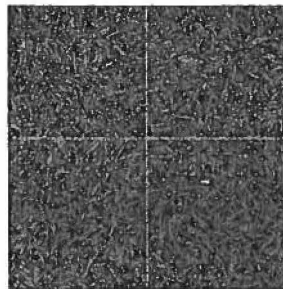
PlayPad Details

- Pads are 4' x 5'
- Thickness options: 1" or 2"
- PlayPad products are made from 100% recycled materials
- 100% nonwoven Geotextile
- Non-toxic and environmentally friendly
- Superior drainage rate
- Long lifespan and stability
- Impact protection and energy absorption

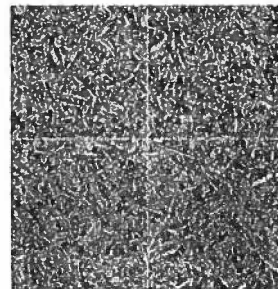
Drop Height Configurations

- Tested to ASTM F1292-18 Impact Attenuation Requirements -

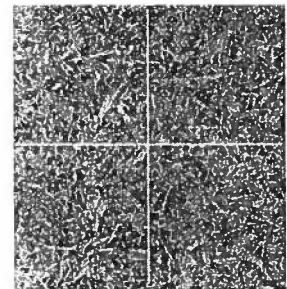
Fall Height	Configuration Required
4'	1.75" PlayFall [®] Tile
6'	1.75" PlayFall [®] Tile + 1.0" PlayPad
8'	1.75" PlayFall [®] Tile + 2.0" PlayPad
10'	1.75" PlayFall [®] Tile + 1.0" PlayPad + 2.0" PlayPad



Black



Green



Terra Cotta