

CITY OF BURNABY

BYLAW NO. 14303

A BYLAW to close and remove the dedication of
a certain portion of highway

WHEREAS pursuant to section 40 of the *Community Charter* and section 120 of the *Land Title Act*, Council may by bylaw close part of a highway to traffic and remove the dedication of that part of the highway;

AND WHEREAS Council, before adopting this Bylaw, has caused the required statutory public notice of its intention to be given by advertisement;

AND WHEREAS Council deems it expedient and in the public interest to stop up and close to traffic and remove the dedication of that portion of highway more particularly hereinafter described,

NOW THEREFORE the Council of the City of Burnaby ENACTS as follows:

1. This Bylaw may be cited as **BURNABY HIGHWAY CLOSURE BYLAW NO. 1, 2021.**
2. ALL AND SINGULAR those certain parcels or tracts of land, situate, lying and being in the City of Burnaby, in the Province of British Columbia, more particularly known and described as those portions of road dedicated in District Lot 151, Group 1, New Westminster District:
 - a) by Plan EPP26598 identified as “Parcel A” and containing 209.8m²;
 - b) by Plan 1895 identified as “Parcel B” and containing 417.8m²;
 - c) by Bylaw Plan 45446 identified as “Parcel C” and containing 184.8m²; and
 - d) by Plan 1895 identified as “Parcel D” and containing 564.9m²

all as shown outlined in bold on Reference Plan EPP10958 (hereinafter collectively called “the closed portion of road”), prepared by Jesse Morin, B.C.L.S., a copy of which is hereunto annexed, is hereby closed to all types of traffic.

3. The dedication of the closed portion of road as highway is removed.

Read a first time this	day of	, 2021
Read a second time this	day of	, 2021
Read a third time this	day of	, 2021
Reconsidered and adopted this	day of	, 2021

MAYOR

CLERK

BCGS 92G.026



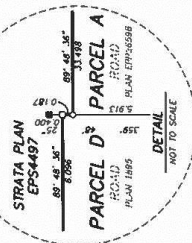
THE INTENDED PLOT SCALE OF THIS PLAN IS 560 mm IN WIDTH BY 432 mm IN HEIGHT (C SIZE) WHEN PLOTTED AT A SCALE OF 1:400.

INTEGRATED SURVEY AREA No. 25, BURNABY
NA08Y(CSRS) 4.0.8C.1.M/RD

GRID BEARINGS ARE DERIVED FROM OBSERVATIONS BETWEEN GEODEIC CONTROL MONUMENTS 512 AND 6145714 AND ARE REFERRED TO CENTRAL MERIDIAN OF UTM ZONE 10.

THE UTM COORDINATES AND ESTIMATED ABSOLUTE ACCURACY ACHIEVED ARE DERIVED FROM THE MASCOIT PUBLISHED COORDINATES FOR GEODEIC CONTROL MONUMENTS

THIS PLAN SHOWS HORIZONTAL GROUND-LEVEL DISTANCES, UNLESS OTHERWISE SPECIFIED TO COMPUTE GRID DISTANCES. MULTIPLY GROUND-LEVEL DISTANCES BY THE AVERAGE CORRECTION FACTOR OF 0.9995851 WHICH HAS BEEN DERIVED FROM GEODETIC CONTROL MONUMENTS 512 AND 6346214.



UNESQ

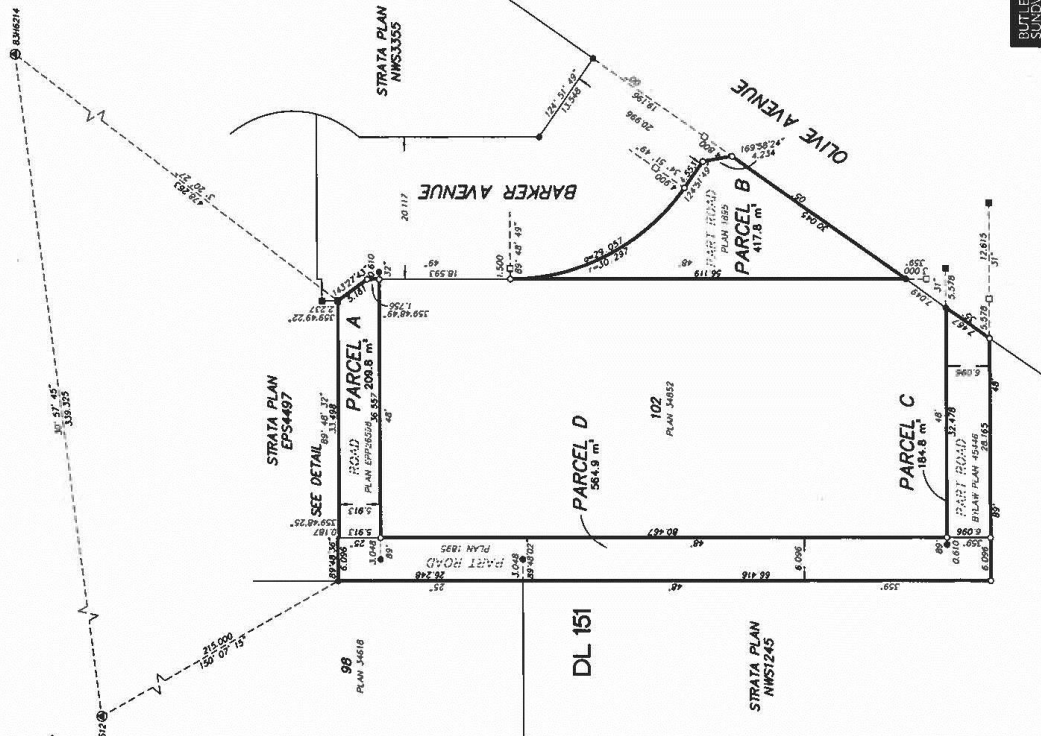
- SOUND PLACED
 DENOTES CONTROL MONUMENT
 DENOTES LEAD PLUG
 DENOTES STANDARD IRON POST
 DENOTES SQUARE METRES

BOOK OF REFERENCE		
DESCRIPTION	DESIGNATION	AREA
PART ROAD DEDICATED BY PLAN EPC/05598	PARCEL A	209.8 m ²
PART ROAD DEDICATED BY PLAN 1895	PARCEL B	417.8 m ²
PART ROAD DEDICATED BY 87146 PLAN 44446	PARCEL C	184.8 m ²
PART ROAD DEDICATED BY PLAN 1895	PARCEL D	364.9 m ²
TOTAL		1172.5 m ²

TABLET MARKING	NORTHING	EASTING	ABSOLUTE ACCURACY
512	545334.3 890 m	499018.321 m	0.01 m
8346214	5453634.714 m	499192.806 m	0.01 m

THE FIELD SURVEY REPRESENTED BY THIS PLAN WAS COMPLETED ON THE 2ND DAY OF MARCH, 2021
JESSE MORIN, BCLS (6080)

THIS PLAN LIES WITHIN THE METRO VANCOUVER REGIONAL DISTRICT



**BUTLER
SUNDVICK**

4 - 19089 94th Ave
Surrey, BC V4N 3J4
www.buttersundvick.ca
Tel. 604-513-9611

File: 5036
Dwg: 5036-RC1