

**CITY OF BURNABY**

**BYLAW NO. 13729**

A BYLAW to amend Bylaw No. 4742, being Burnaby Zoning

Bylaw 1965, as amended by Bylaw No. 13387, being Burnaby  
Zoning Bylaw 1965, Amendment Bylaw No. 31, 2014

WHEREAS application for rezoning has been made to the Council;

AND WHEREAS the Council has held a public hearing thereon after duly giving notice of the time and place of such hearing as prescribed by Sections 466 and 467 of the *Local Government Act*, R.S.B.C. 2015;

NOW THEREFORE the Council of the City of Burnaby ENACTS as follows:

1. This Bylaw may be cited as **BURNABY ZONING BYLAW 1965, AMENDMENT BYLAW NO. 10, 2017.**

2. Bylaw No. 4742, as amended by Bylaw No. 13387, is further amended as follows:

(a) The Map (hereinafter called "Map 'A'"), attached to and forming an integral part of Bylaw No. 4742, being "Burnaby Zoning Bylaw 1965", and designated as the Official Zoning Map of the City of Burnaby, is hereby amended according to the Map (hereinafter called "Map 'B'"), marginally numbered R.Z. 4090, annexed to this Bylaw, and in accordance with the explanatory legend, notations, references and boundaries designated, described, delimited and specified in particularity shown upon said Map 'B'; and the various boundaries and districts shown upon said Map 'B' respectively are an amendment of and in addition to the respective districts, designated and marked on said Map 'A' insofar as the same are changed, modified or varied thereby, and the said

Map 'A' shall be deemed to be and is hereby declared to be amended accordingly and the said Map 'B' is hereby declared to be and shall form an integral part of said Map 'A', as if originally incorporated therein and shall be interpreted accordingly.

(b) The Comprehensive Development Plan more particularly described in Bylaw No. 13387, is amended in accordance with the adopted Development Plan entitled "ICON" prepared by IBI GROUP and PWL PARTNERSHIP LANDSCAPE ARCHITECTS INC. and on file in the office of the Director Planning and Building; and any development on the lands rezoned by this Bylaw shall be in conformity with the said Comprehensive Development Plan as amended.

Read a first time this	day of	2017
Read a second time this	day of	2017
Read a third time	day of	2017
Reconsidered and adopted this	day of	2017

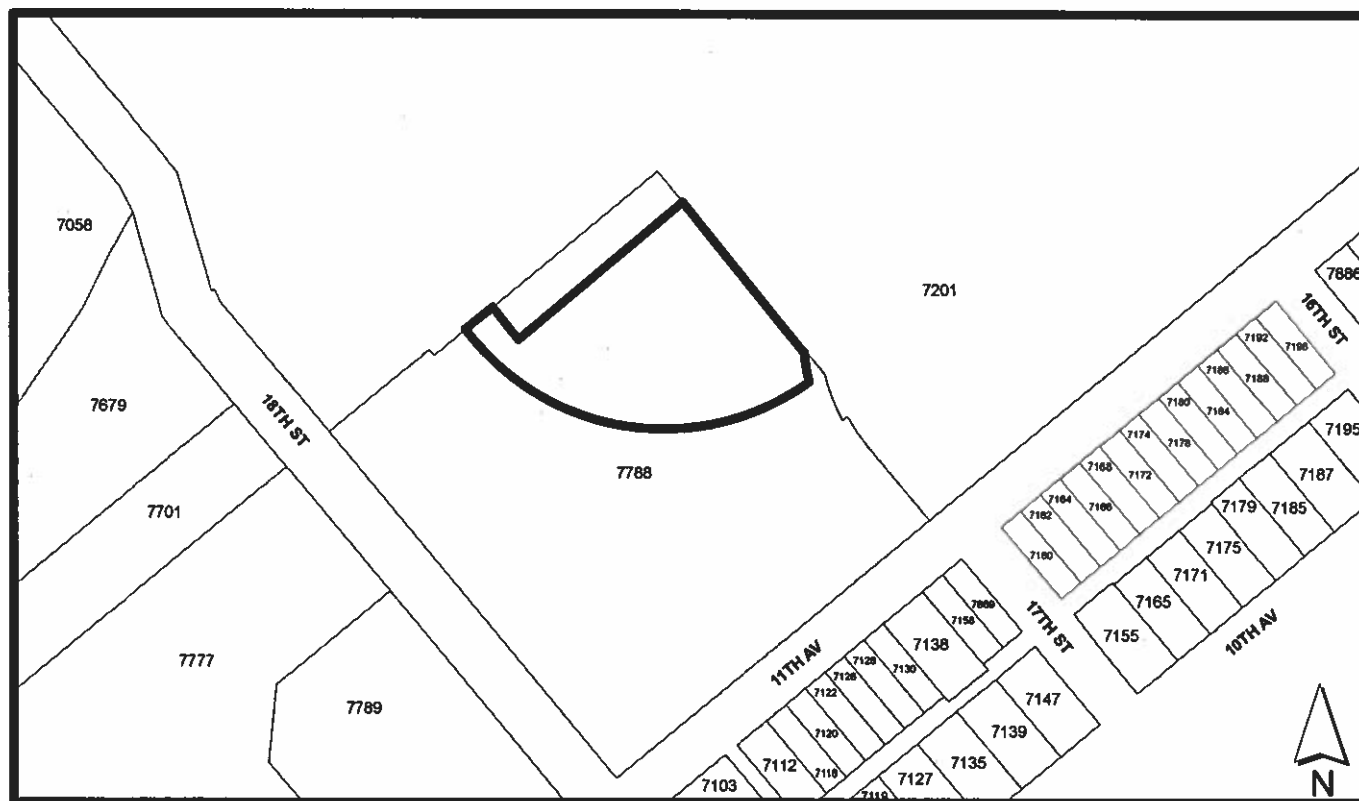
MAYOR

CLERK

**BYLAW NUMBER 13729 BEING A BYLAW TO AMEND BYLAW  
NUMBER 4742 BEING BURNABY ZONING BYLAW 1965**

**REZ.16-08**


**LEGAL: Portion of Lot 1, DL 53, Group 1, NWD Plan EPP61185**



THE AREA(S) SHOWN ABOVE OUTLINED IN BLACK ( ——— ) IS (ARE) REZONED

**FROM: CD Comprehensive Development District (based on RM5, RM1 Multiple Family Residential Districts and C2 Community Commercial District)**

**TO: Amended CD Comprehensive Development District (based on RM5 and RM1 Multiple Family Residential Districts, C2 Community Commercial District, Southgate Neighbourhood Master Plan and Edmonds Town Centre Plan guidelines and in accordance with the development plan entitled "Icon" prepared by IBI Group and PWL Partnership Landscape Architects Inc.)**

 <b>City of Burnaby</b>	<b>PLANNING AND BUILDING DEPARTMENT</b>	
<b>Date: MAR 06 2017</b>	<div data-bbox="418 1927 906 1974" data-label="Section-Header"> <p><b>OFFICIAL ZONING MAP</b></p> </div> <div data-bbox="1214 1927 1442 1990" data-label="Text"> <p><b>Map "B" 4090 No. REZ.</b></p> </div>	
<b>scale: 1:3,000</b>		
<b>Drawn By: AY</b>		