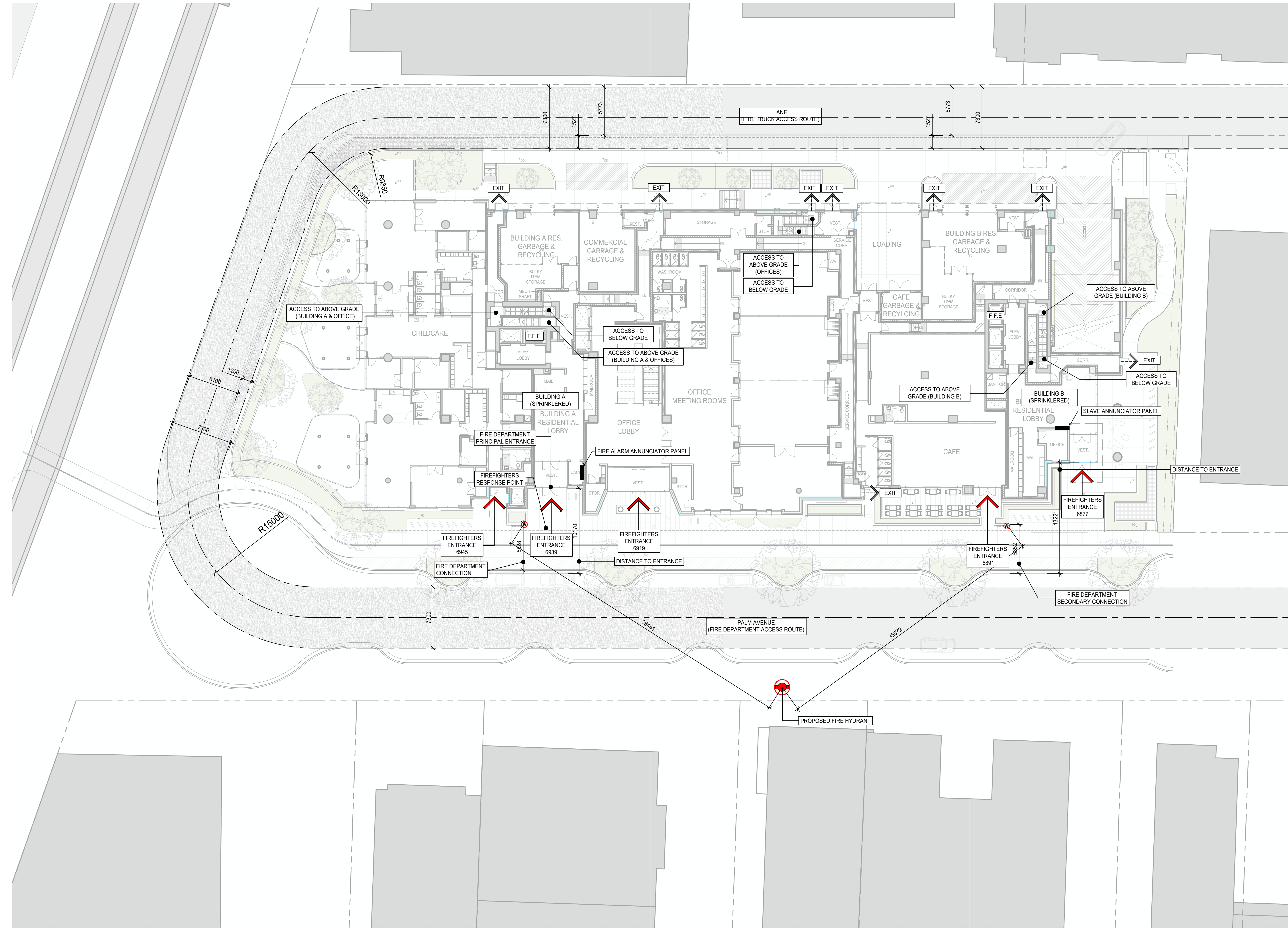
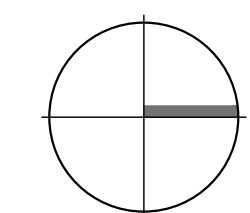


KEY PLAN



No.	Description	Date	Dr.
-	AMENDED DEVELOPMENT PLAN	JUL 28 2023	
-	AMENDED DEVELOPMENT PLAN	JUL 7 2023	
-	ISSUED FOR SPOD REVIEW	JUN 12 2023	
-	ISSUED FOR SPOD REVIEW	FEB 11 2022	
-	ISSUED FOR SPOD REVIEW	FEB 03 2022	
-	ISSUED FOR SPOD REVIEW	JAN 31 2022	
-	ISSUED FOR SPOD REVIEW	JAN 21 2022	
-	ISSUED FOR SPOD REVIEW	DEC 08 2021	
-	ISSUED FOR SPOD REVIEW	NOV 22 2021	
-	ISSUED FOR SPOD REVIEW	JUN 14 2021	

Revisions: Read Up



DA
DA Architects + Planners
200 - 1014 Homer Street, Vancouver
British Columbia, Canada V6B 2W9
T 604 685 6312
F 604 685 0988
www.da-architects.ca

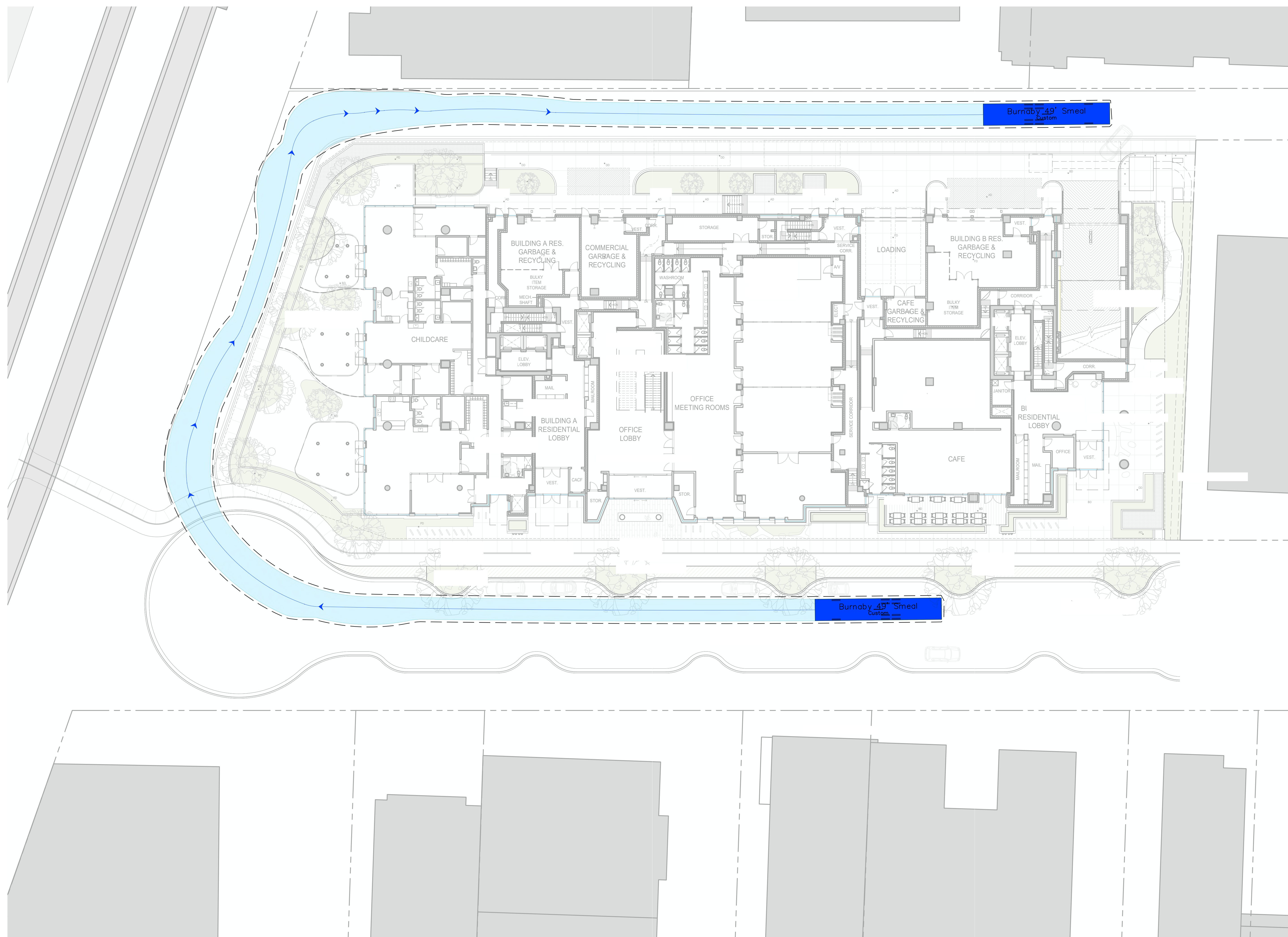
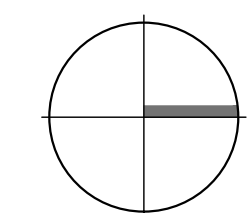
AMENDED DEVELOPMENT PLAN - REZ20-27
6877, 6891, 6913, 6939, 6945 PALM AVENUE BURNABY, BC

Copyright Reserved. This plan and design are, and at all times remain the exclusive property of DA Architects + Planners, and cannot be used or reproduced without the Architect's written consent.

Sheet Title
FIRE ACCESS PLAN - LEVEL 1

Job No.	20-08-000	Sheet No.	
Scale	1:200		
Drawn			A-202a
Checked			
Approved			
Date	2022.12.23	Revision	-

KEY PLAN



No.	Description	Date	Dr.
-	AMENDED DEVELOPMENT PLAN	JUL 28 2023	
-	AMENDED DEVELOPMENT PLAN	JUL 7 2023	
-	ISSUED FOR SPOD REVIEW	JUN 12 2023	
-	ISSUED FOR SPOD REVIEW	FEB 11 2022	
-	ISSUED FOR SPOD REVIEW	FEB 03 2022	
-	ISSUED FOR SPOD REVIEW	JAN 31 2022	
-	ISSUED FOR SPOD REVIEW	JAN 21 2022	
-	ISSUED FOR SPOD REVIEW	DEC 08 2021	
-	ISSUED FOR SPOD REVIEW	NOV 22 2021	
-	ISSUED FOR SPOD REVIEW	JUN 14 2021	

Revisions: Read Up



DA
DA Architects + Planners
200 - 1014 Homer Street, Vancouver
British Columbia, Canada V6B 2W9
T 604 685 6312
F 604 685 0988
www.da-architects.ca

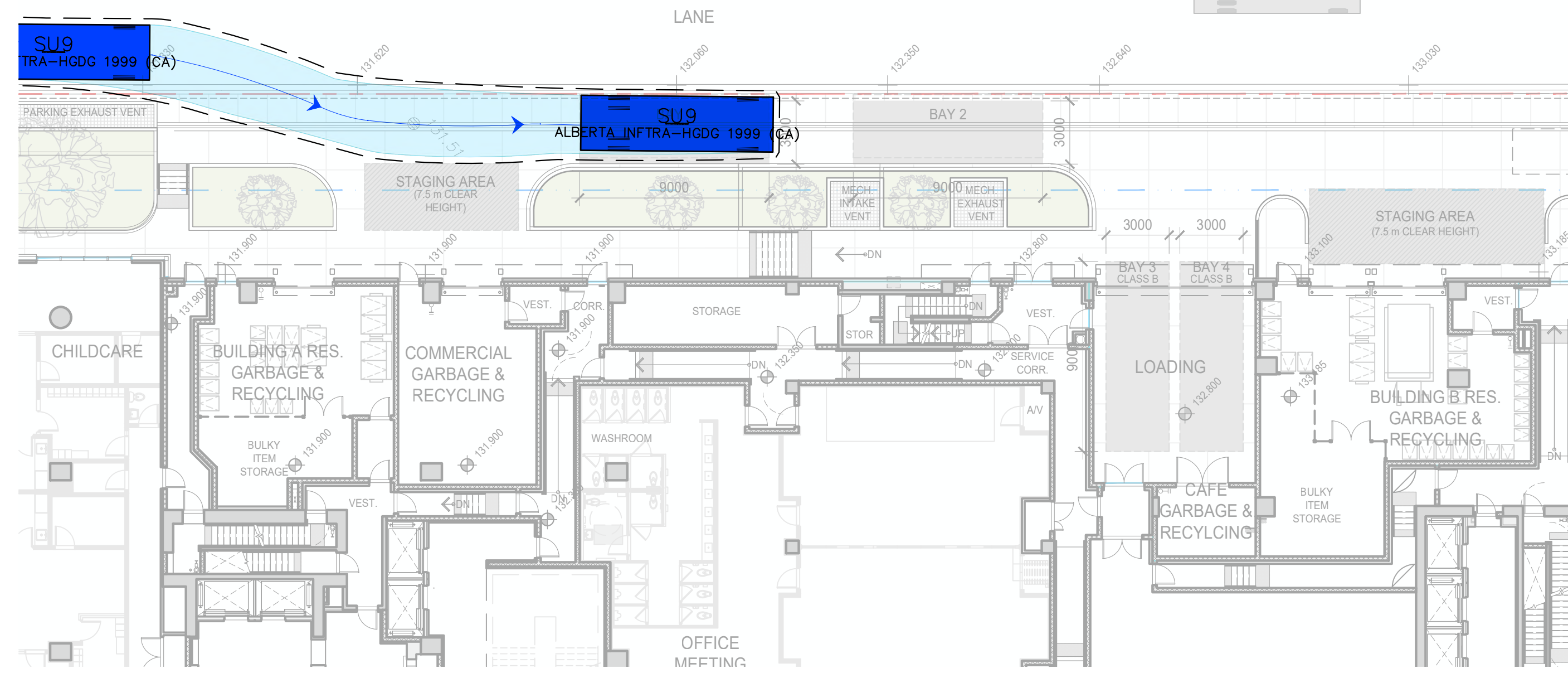
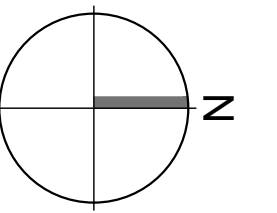
AMENDED DEVELOPMENT
PLAN - REZ20-27
6877, 6891, 6913, 6939, 6945 PALM AVENUE
BURNABY, BC

Copyright Reserved. This plan and design are, and at all times remain the exclusive property of DA Architects + Planners, and cannot be used or reproduced without the Architect's written consent.

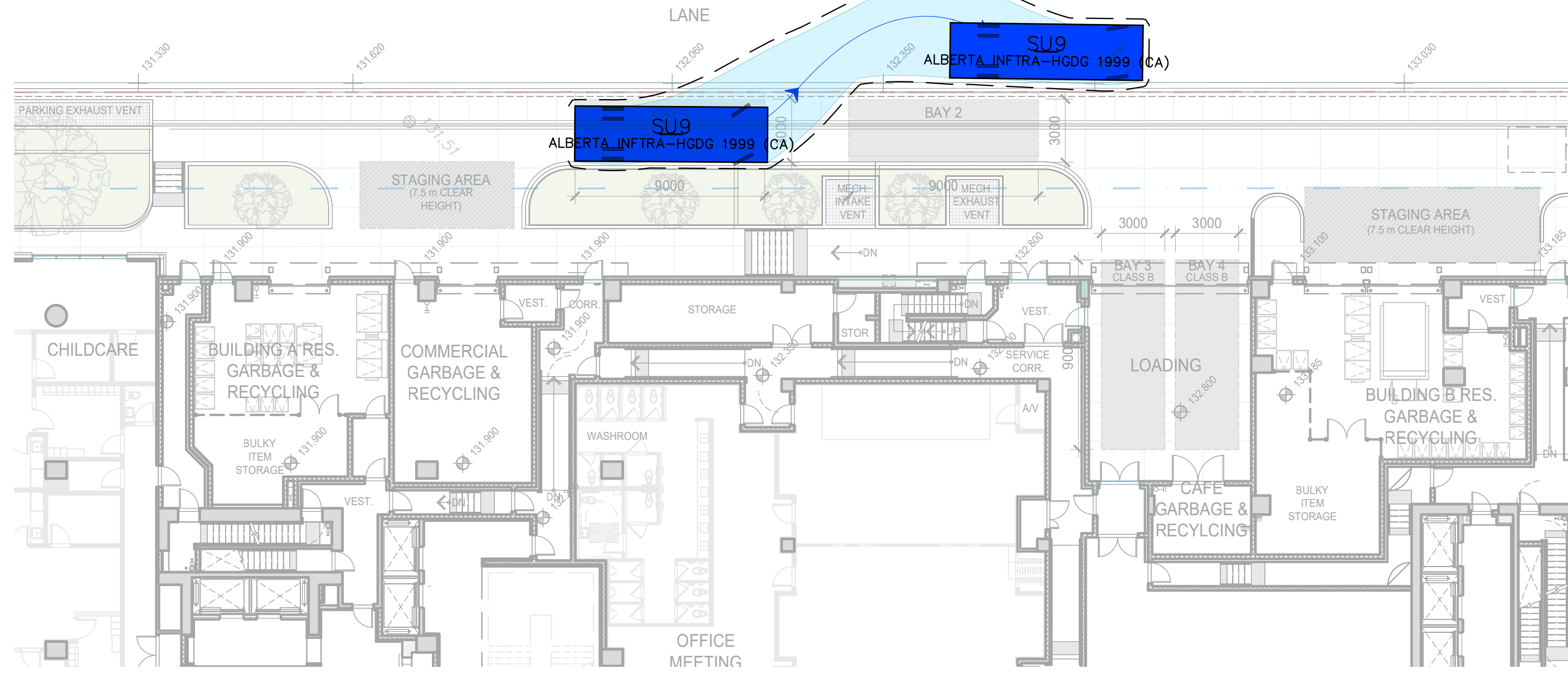
Sheet Title
FIRE ACCESS PLAN -
VEHICULAR MANEUVERING

Job No.	20-08-000	Sheet No.	A-202b
Scale	1:200		
Drawn			
Checked			
Approved			
Date	2022.12.23	Revision	-

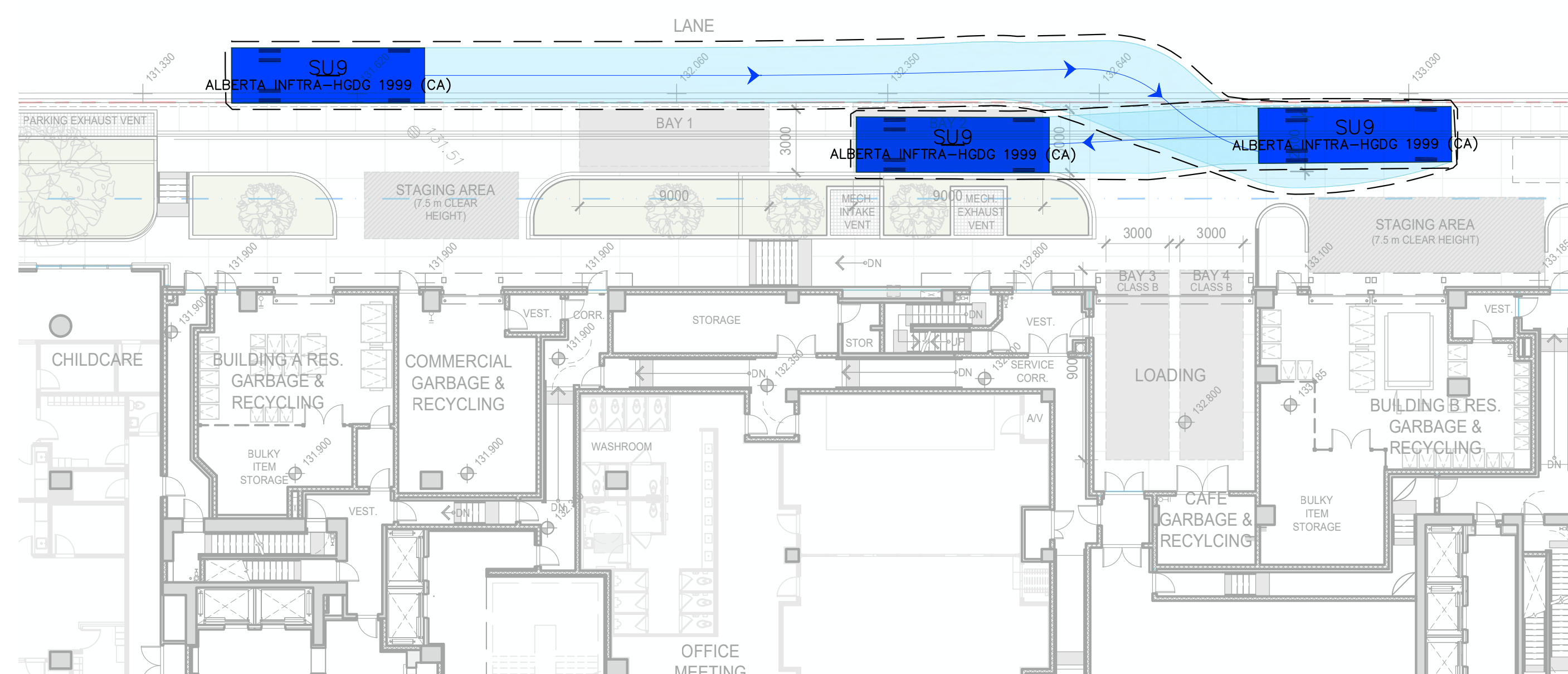
KEY PLAN



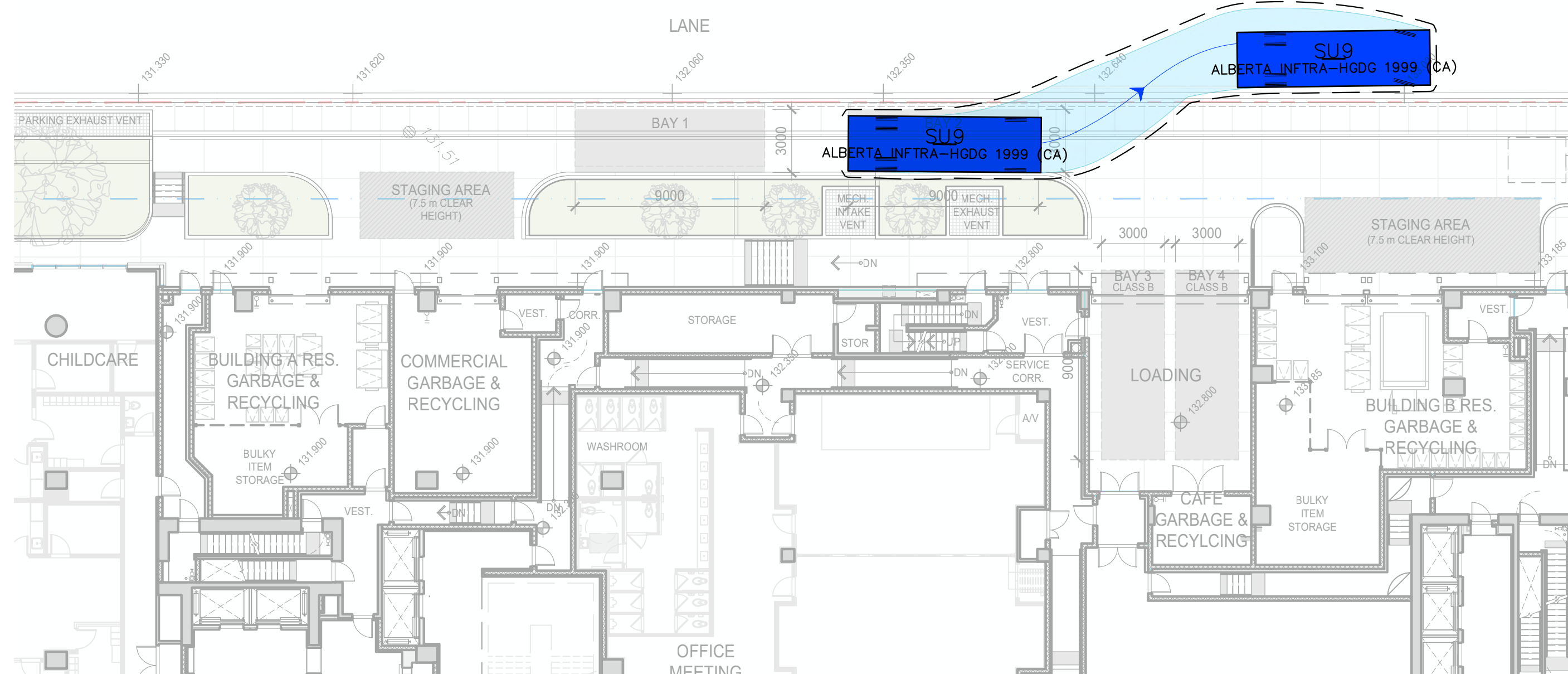
1 LOADING BAY 1 - VEHICLE PARKING MANEUVER
1:200



2 LOADING BAY 1 - VEHICLE EXITING MANEUVER
1:200



3 LOADING BAY 2 - VEHICLE PARKING MANEUVER
1:200



4 LOADING BAY 2 - VEHICLE EXITING MANEUVER
1:200

DRIVEWAY / STAGING AREA NOTE:
DRIVEWAY / STAGING AREA WILL BE DESIGNED
TO ACCOMMODATE A 36,000 KG VEHICLE BOTH
STRUCTURALLY AND SURFACE TREATMENT
WISE

No.	Description	Date	Dr.
-	AMENDED DEVELOPMENT PLAN	JUL 28 2023	
-	AMENDED DEVELOPMENT PLAN	JUL 7 2023	
-	ISSUED FOR SPOD REVIEW	JUN 12 2023	
-	ISSUED FOR SPOD REVIEW	FEB 11 2022	
-	ISSUED FOR SPOD REVIEW	FEB 03 2022	
-	ISSUED FOR SPOD REVIEW	JAN 31 2022	
-	ISSUED FOR SPOD REVIEW	JAN 21 2022	
-	ISSUED FOR SPOD REVIEW	DEC 08 2021	
-	ISSUED FOR SPOD REVIEW	NOV 22 2021	
-	ISSUED FOR SPOD REVIEW	JUN 14 2021	

Revisions: Read Up



DA
DA Architects + Planners
200 - 1014 Homer Street, Vancouver
British Columbia, Canada V6B 2W9
T 604 685 6312
F 604 685 0988
www.da-architects.ca

AMENDED DEVELOPMENT
PLAN - REZ20-27
6877, 6891, 6913, 6939, 6945 PALM AVENUE
BURNABY, BC

Copyright Reserved. This plan and design are, and at all times remain
the exclusive property of DA Architects + Planners, and cannot be used
or reproduced without the Architect's written consent.

Sheet Title
LOADING ACCESS PLAN -
BAYS 1 & 2

Job No.	20-08-000	Sheet No.	
Scale	1:200		
Drawn			A-203a
Checked			
Approved			
Date	2022.12.23	Revision	-