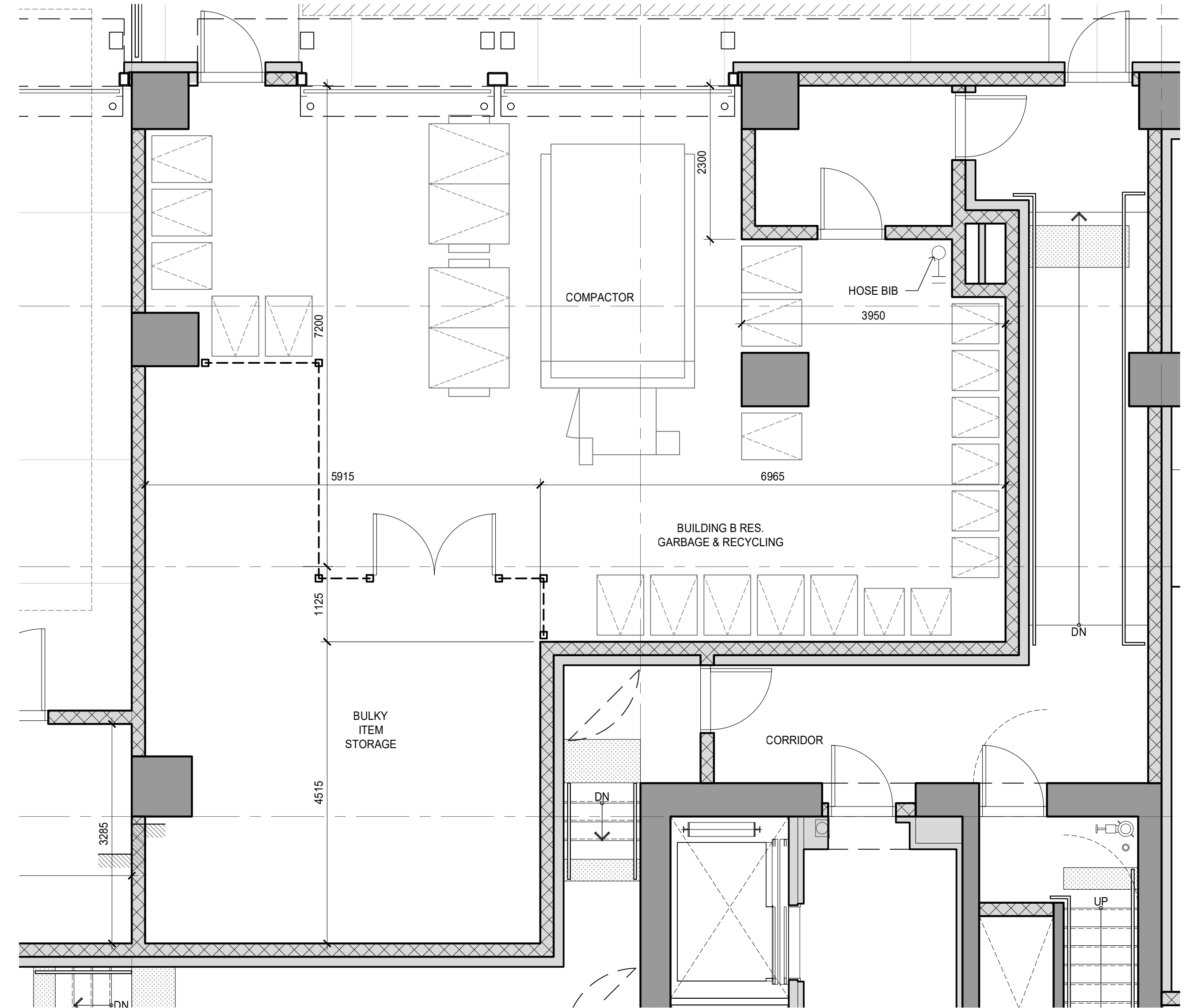
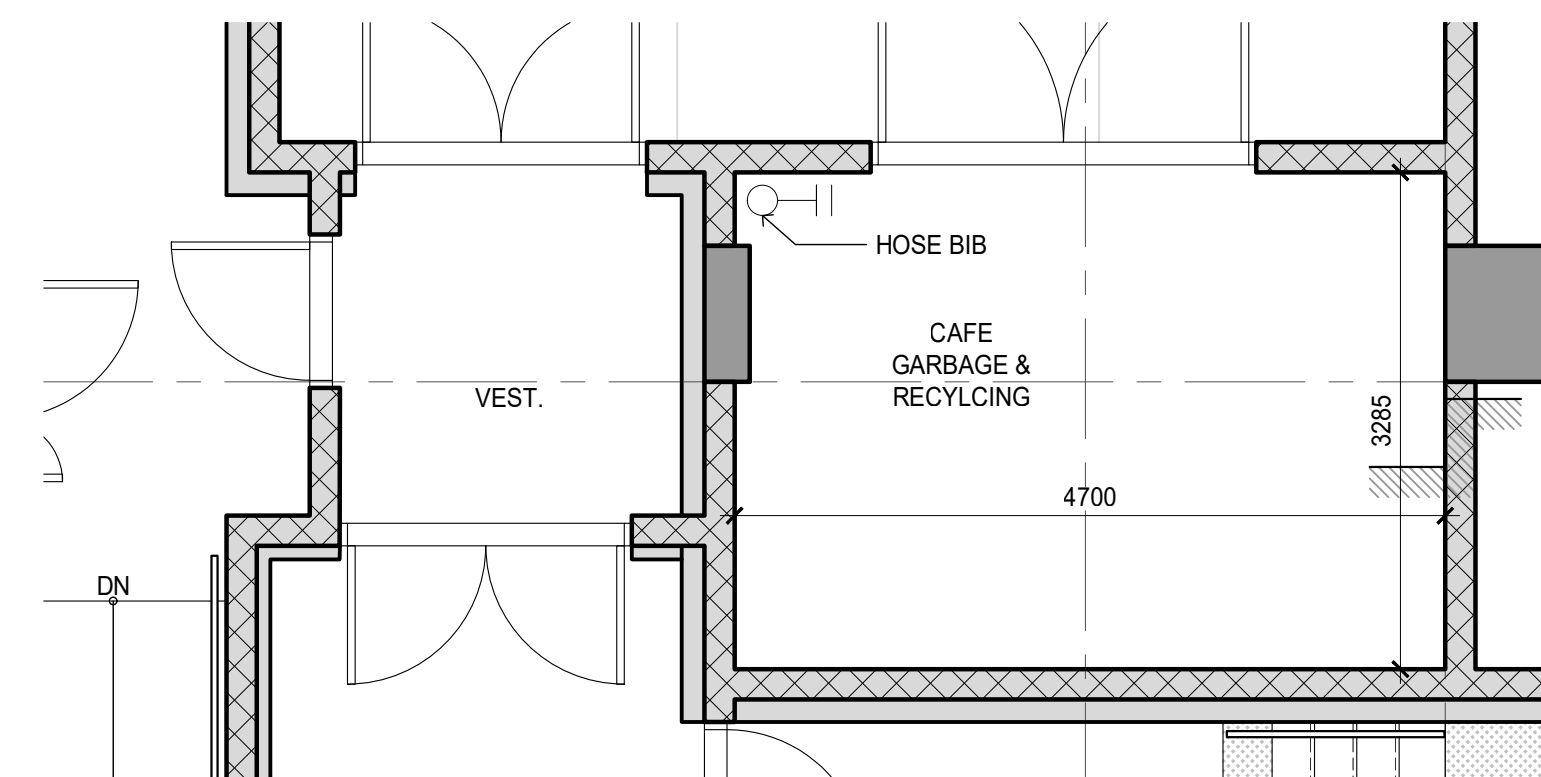


1 BUILDING A GARBAGE / RECYCLING PLAN
1:50



2 BUILDING B GARBAGE / RECYCLING PLAN
1:50



3 CAFE GARBAGE / RECYCLING PLAN
1:50

T. Solid Waste and Recycling

| Use | Requirement | Units | GFA | Storage(m2) | Staging(m2) |
|-------------------------|------------------|-------|---------|---------------|-------------|
| Res. Bldg A Waste: | 0.44 sm / unit | 112 | N/A | 49.28 | 22.18 |
| Res. Bldg A Bulky: | 0.22 sm / unit | 112 | N/A | 24.64 | N/A |
| Res. Bldg B Waste: | 0.44 sm / unit | 180 | N/A | 79.20 | 35.64 |
| Res. Bldg B Bulky: | 0.22 sm / unit | 180 | N/A | 39.60 | N/A |
| Office: | 0.008 sm / 1 sm | N/A | 4608.16 | 36.87 | |
| Office (Meeting Rooms): | 0.008 sm / 1 sm | N/A | 805.74 | 6.45 | |
| Café: | 0.025 sm / 1 sm | N/A | 373.51 | 9.34 | |
| Childcare: | 0.0163 sm / 1 sm | N/A | 611.55 | 9.97 | |
| Total: | | | | 245.37 | |

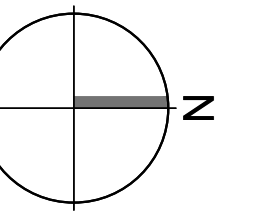
GARBAGE & RECYCLING & BULKY ITEM STORAGE DESIGN REQUIREMENTS:

| | | | |
|---------------|---|--------------|---|
| CONCRETE PAD: | - MINIMUM 15.25cm THICK REINFORCED CONCRETE PADS | HOSE BIB: | - AT LEAST (1) HOSE BIB FOR CLEANING THE FACILITY AND CONTAINER FOR NEEDED |
| DRAINAGE: | - MUST DRAIN TO SANITY SEWER - GREASE INTERCEPTOR REQUIRED | VENTILATION: | - SUITABLE VENTILATION TO THE EXTERIOR OF THE BUILDING TO RELEASE ODOUR/STALE AIR IN COMPLIANCE WITH APPLICABLE BUILDING CODE REQUIREMENTS |
| DOOR: | - VEHICLE CLEARANCE OF 2200mm MINIMUM - CAN BE PROPPED OR LOCKED WITH A BUMPER GUARD | CLOSED ROOF: | - FACILITY MUST BE DESIGNED SUCH THAT THE FACILITY'S SANITARY DRAIN WILL NOT RECEIVE THE RAIN WATER. - ROOF AND/OR OTHER PROVIDED RAIN WATER DIVERSION FEATURES WILL BE IN COMPLIANCE WITH APPLICABLE BUILDING CODE REQUIREMENTS |
| ELECTRICITY: | - POWER SHALL BE PROVIDED FOR EQUIPMENT INSIDE THE FACILITY | SECURITY: | - BE SUFFICIENTLY SECURE TO MINIMIZE PEST AND WILDLIFE ACCESS - BE PROTECTED FROM UNLAWFUL ENTRY THROUGH THE USE OF STRIKE-PLATES, LOCKS AND ASTRAGALS TO CLOSE CLEARANCE GAPS BETWEEN DOORS AND FRAMES |
| LIGHT: | - LIGHT SHALL BE PROVIDE INSIDE AND AROUND FACILITY | | |

| BUILDING A - CALCULATION OF AREA REQUIREMENT: | REQUIRED | PROVIDED | REFERENCE |
|---|-------------|-------------|--|
| GARBAGE & RECYCLING STORAGE ROOM: | 49.28 sq.m. | 55.93 sq.m. | 112 UNITS @ 0.44 sq.m. / UNIT |
| STAGING AREA: | 22.18 sq.m. | 23.07 sq.m. | 45% OF STORAGE |
| BULKY ITEM STORAGE: | 24.64 sq.m. | 24.75 sq.m. | 112 UNITS @ 0.22 sq.m. / UNIT |
| BUILDING B - CALCULATION OF AREA REQUIREMENT: | REQUIRED | PROVIDED | REFERENCE |
| GARBAGE & RECYCLING ROOM: | 79.2 sq.m. | 82.89 sq.m. | 180 UNITS @ 0.44 sq.m. / UNIT |
| STAGING AREA: | 35.64 sq.m. | 39.44 sq.m. | 45% OF STORAGE |
| BULKY ITEM STORAGE: | 39.6 sq.m. | 40.25 sq.m. | 180 UNITS @ 0.22 sq.m. / UNIT (max.50 sq.m.) |

* based on City of Burnaby - Solid Waste and Recycling Land Development Requirements

KEY PLAN



| No. | Description | Date | Dr. |
|-----|--------------------------|-------------|-----|
| - | AMENDED DEVELOPMENT PLAN | JUL 28 2023 | |
| - | AMENDED DEVELOPMENT PLAN | JUL 7 2023 | |
| - | ISSUED FOR SPOD REVIEW | JUN 12 2023 | |
| - | ISSUED FOR SPOD REVIEW | FEB 11 2022 | |
| - | ISSUED FOR SPOD REVIEW | FEB 03 2022 | |
| - | ISSUED FOR SPOD REVIEW | JAN 31 2022 | |
| - | ISSUED FOR SPOD REVIEW | JAN 21 2022 | |
| - | ISSUED FOR SPOD REVIEW | DEC 08 2021 | |
| - | ISSUED FOR SPOD REVIEW | NOV 22 2021 | |
| - | ISSUED FOR SPOD REVIEW | JUN 14 2021 | |
| No. | Description | Date | Dr. |

Revisions: Read Up



DA Architects + Planners
 >> 200 - 1014 Homer Street, Vancouver
 British Columbia, Canada V6B 2W9
 T 604 685 6312
 F 604 685 0988
 www.da-architects.ca

AMENDED DEVELOPMENT PLAN - REZ20-27

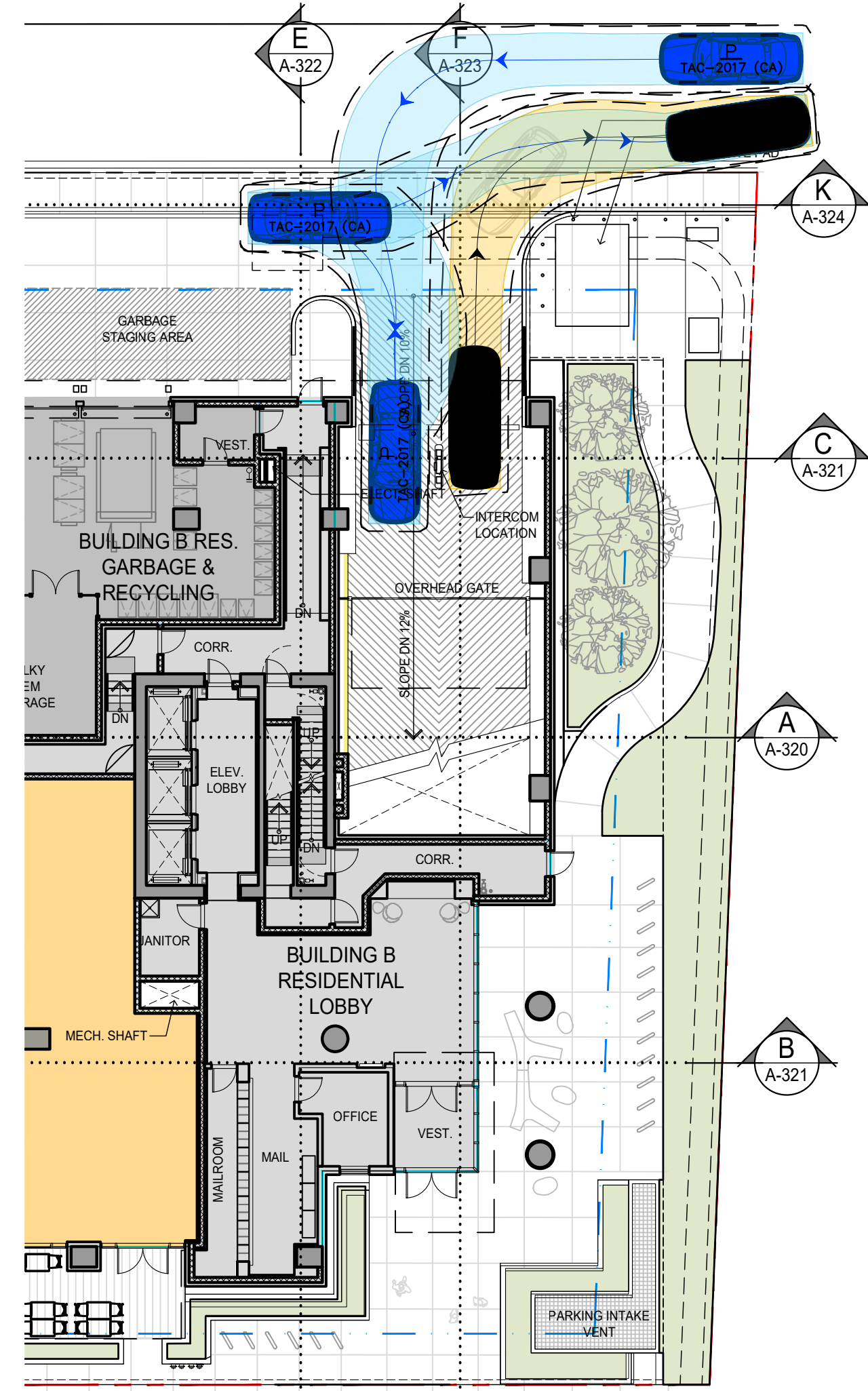
6877, 6891, 6913, 6939, 6945 PALM AVENUE
 BURNABY, BC

Copyright Reserved. This plan and design are, and at all times remain the exclusive property of DA Architects + Planners, and cannot be used or reproduced without the Architect's written consent.

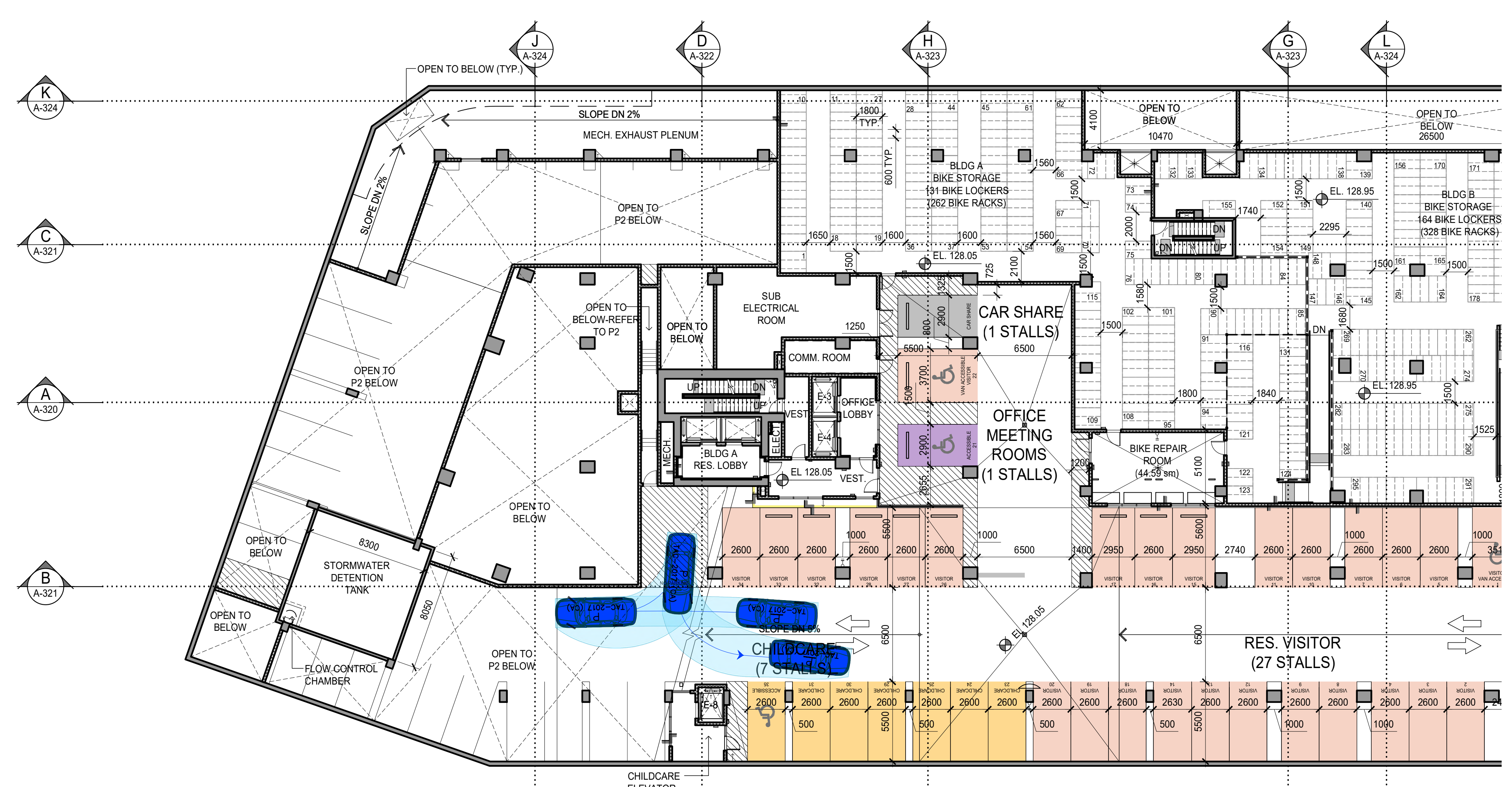
Sheet Title
GARBAGE & RECYCLING ROOMS LAYOUT

| | | | |
|----------|------------|-----------|---|
| Job No. | 20-08-000 | Sheet No. | |
| Scale | 1:50 | | |
| Drawn | | | |
| Checked | | | |
| Approved | | | |
| Date | 2022.12.23 | Revision | - |

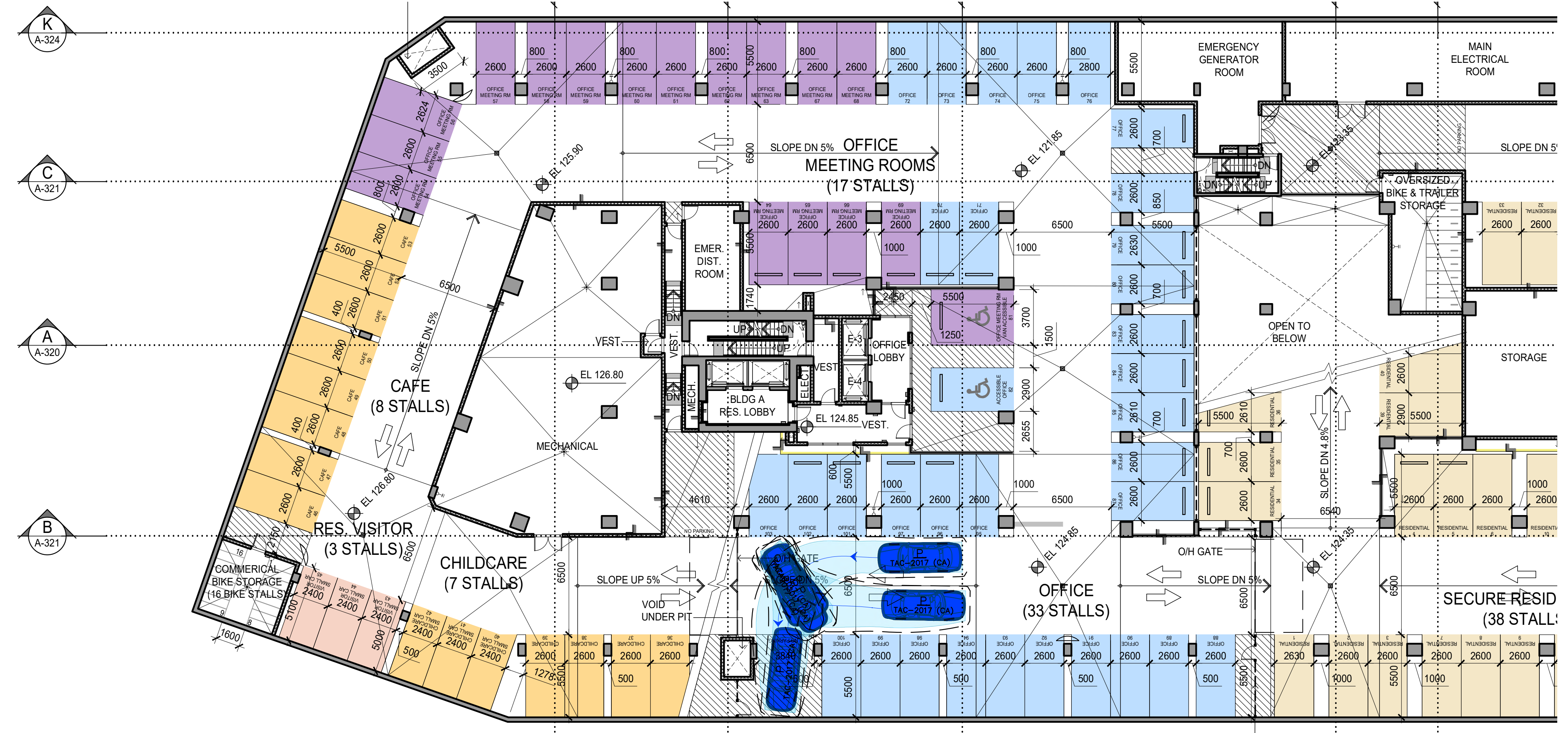
A-205



1 PARKADE ACCESS - LEVEL 1 PLAN
1:200

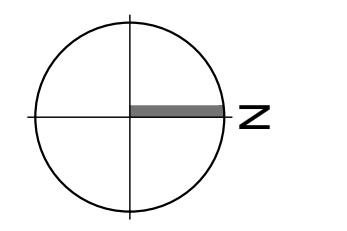


2 CHILDCARE TURNAROUND - P1 PARKING PLAN
1:200



3 COMMERCIAL TURNAROUND - P2 PARKING PLAN
1:200

KEY PLAN



| No. | Description | Date | Dr. |
|-----|--------------------------|-------------|-----|
| - | AMENDED DEVELOPMENT PLAN | JUL 28 2023 | |
| - | AMENDED DEVELOPMENT PLAN | JUL 7 2023 | |
| - | ISSUED FOR SPOD REVIEW | JUN 12 2023 | |
| - | ISSUED FOR SPOD REVIEW | FEB 11 2022 | |
| - | ISSUED FOR SPOD REVIEW | FEB 03 2022 | |
| - | ISSUED FOR SPOD REVIEW | JAN 31 2022 | |
| - | ISSUED FOR SPOD REVIEW | JAN 21 2022 | |
| - | ISSUED FOR SPOD REVIEW | DEC 08 2021 | |
| - | ISSUED FOR SPOD REVIEW | NOV 22 2021 | |
| - | ISSUED FOR SPOD REVIEW | JUN 14 2021 | |

Revisions: Read Up



DA
DA Architects + Planners
200 - 1014 Homer Street, Vancouver
British Columbia, Canada V6B 2W9
T 604 685 6312
F 604 685 0988
www.da-architects.ca

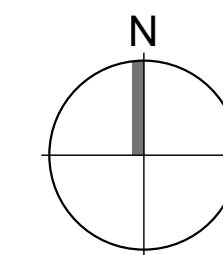
AMENDED DEVELOPMENT PLAN - REZ20-27
6877, 6891, 6913, 6939, 6945 PALM AVENUE BURNABY, BC

Copyright Reserved. This plan and design are, and at all times remain the exclusive property of DA Architects + Planners, and cannot be used or reproduced without the Architect's written consent.

Sheet Title
VISITOR VEHICLE ACCESS

| | | | |
|----------|------------|-----------|-------|
| Job No. | 20-08-000 | Sheet No. | |
| Scale | 1:200 | | |
| Drawn | | | A-206 |
| Checked | | | |
| Approved | | | |
| Date | 2022.12.23 | Revision | - |

KEY PLAN



| No. | Description | Date | Dr. |
|-----|--------------------------|-------------|-----|
| - | AMENDED DEVELOPMENT PLAN | JUL 28 2023 | |
| - | AMENDED DEVELOPMENT PLAN | JUL 7 2023 | |
| - | ISSUED FOR SPOD REVIEW | JUN 12 2023 | |
| - | ISSUED FOR SPOD REVIEW | FEB 11 2022 | |
| - | ISSUED FOR SPOD REVIEW | FEB 03 2022 | |
| - | ISSUED FOR SPOD REVIEW | JAN 31 2022 | |
| - | ISSUED FOR SPOD REVIEW | JAN 21 2022 | |
| - | ISSUED FOR SPOD REVIEW | DEC 08 2021 | |
| - | ISSUED FOR SPOD REVIEW | NOV 22 2021 | |
| - | ISSUED FOR SPOD REVIEW | JUN 14 2021 | |

Revisions: Read Up



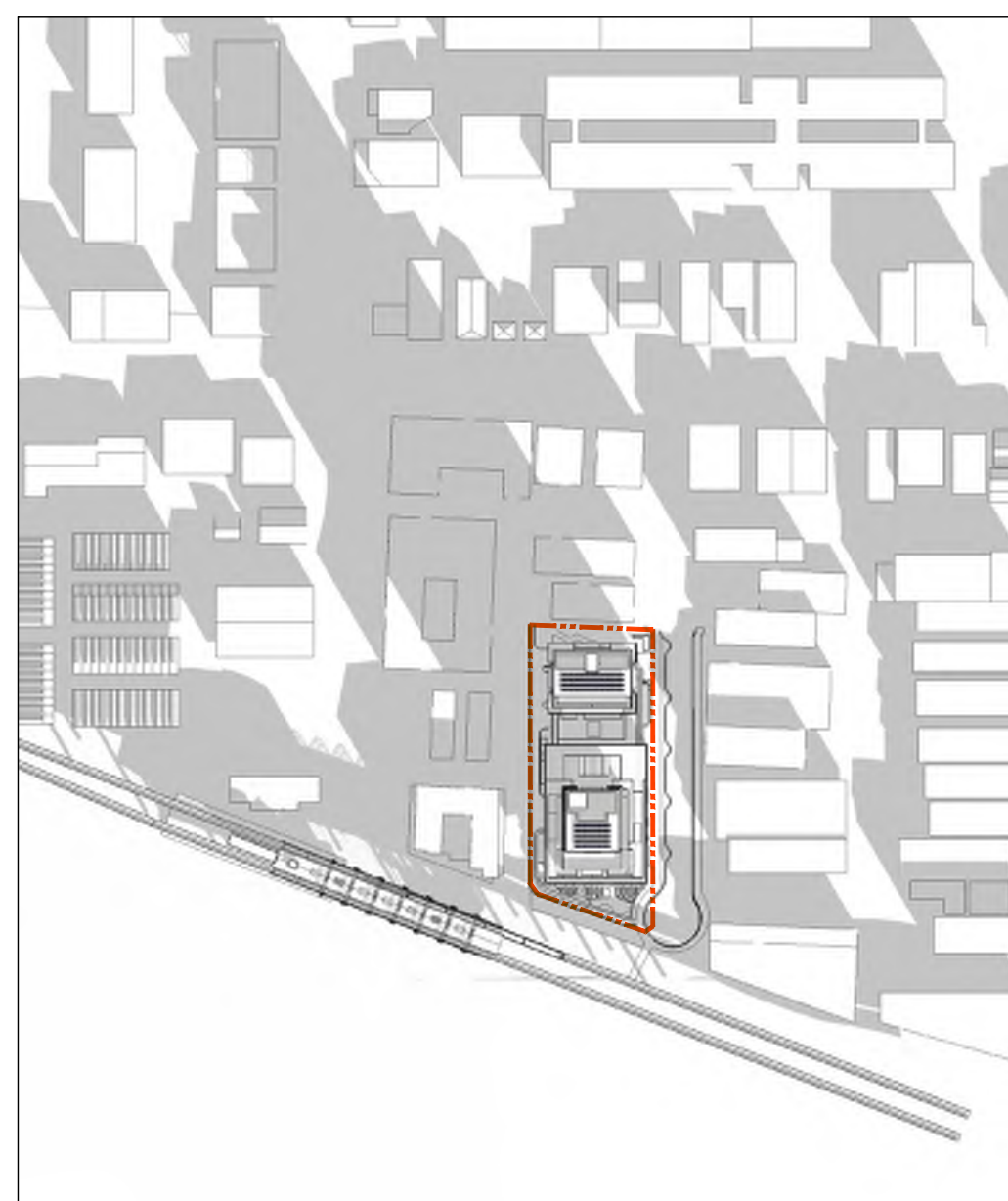
DA
DA Architects + Planners
>> 200 - 1014 Homer Street, Vancouver
British Columbia, Canada V6B 2W9
T 604 685 6312
F 604 685 0988
www.da-architects.ca

AMENDED DEVELOPMENT
PLAN - REZ20-27
6877, 6891, 6913, 6939, 6945 PALM AVENUE
BURNABY, BC

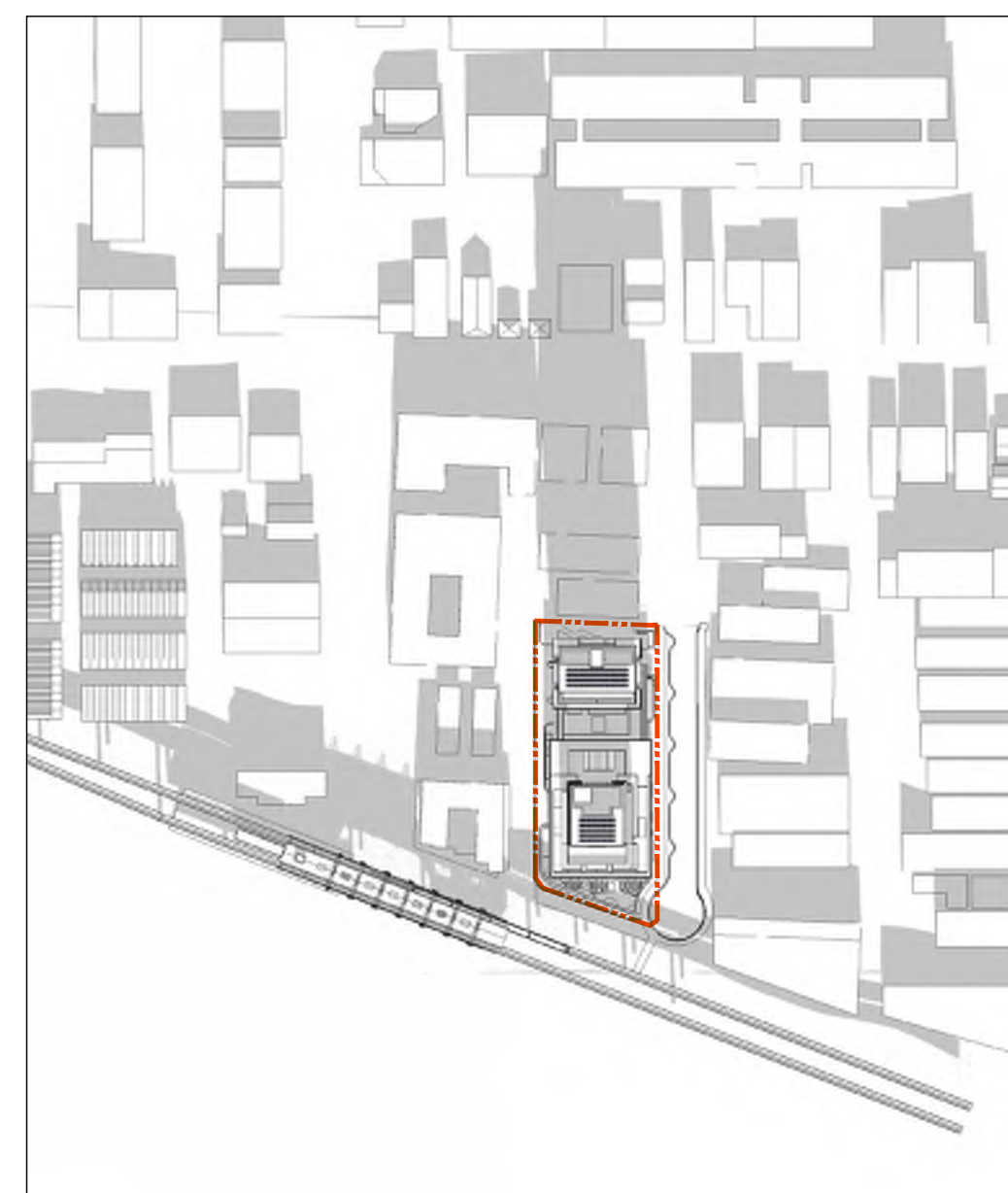
Copyright Reserved. This plan and design are, and at all times remain the exclusive property of DA Architects + Planners, and cannot be used or reproduced without the Architect's written consent.

Sheet Title
SHADOW STUDY

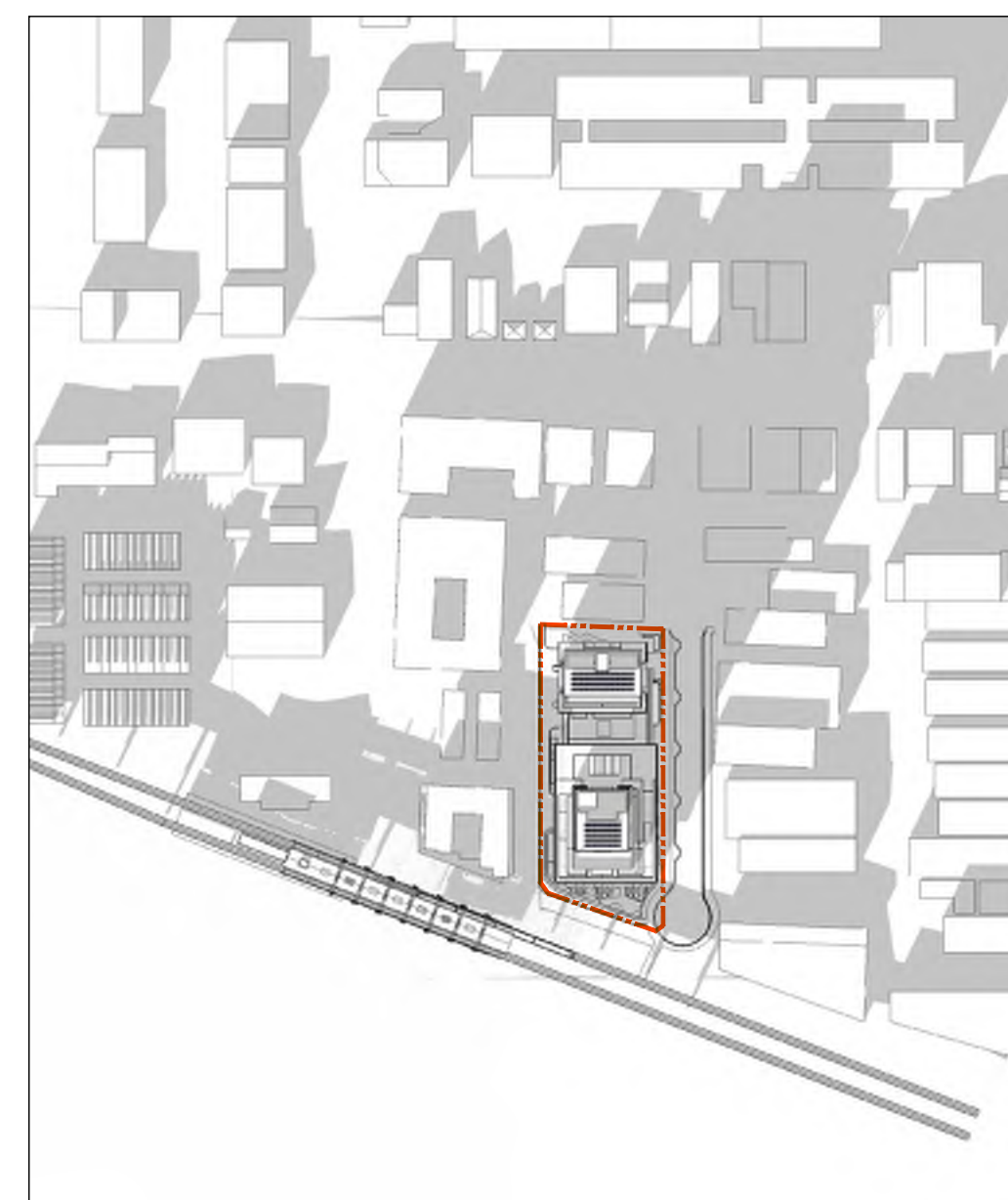
| | | | |
|----------|------------|-----------|-------|
| Job No. | 20-08-000 | Sheet No. | A-207 |
| Scale | 1:200 | | |
| Drawn | | | |
| Checked | | | |
| Approved | | | |
| Date | 2021.02.02 | Revision | - |



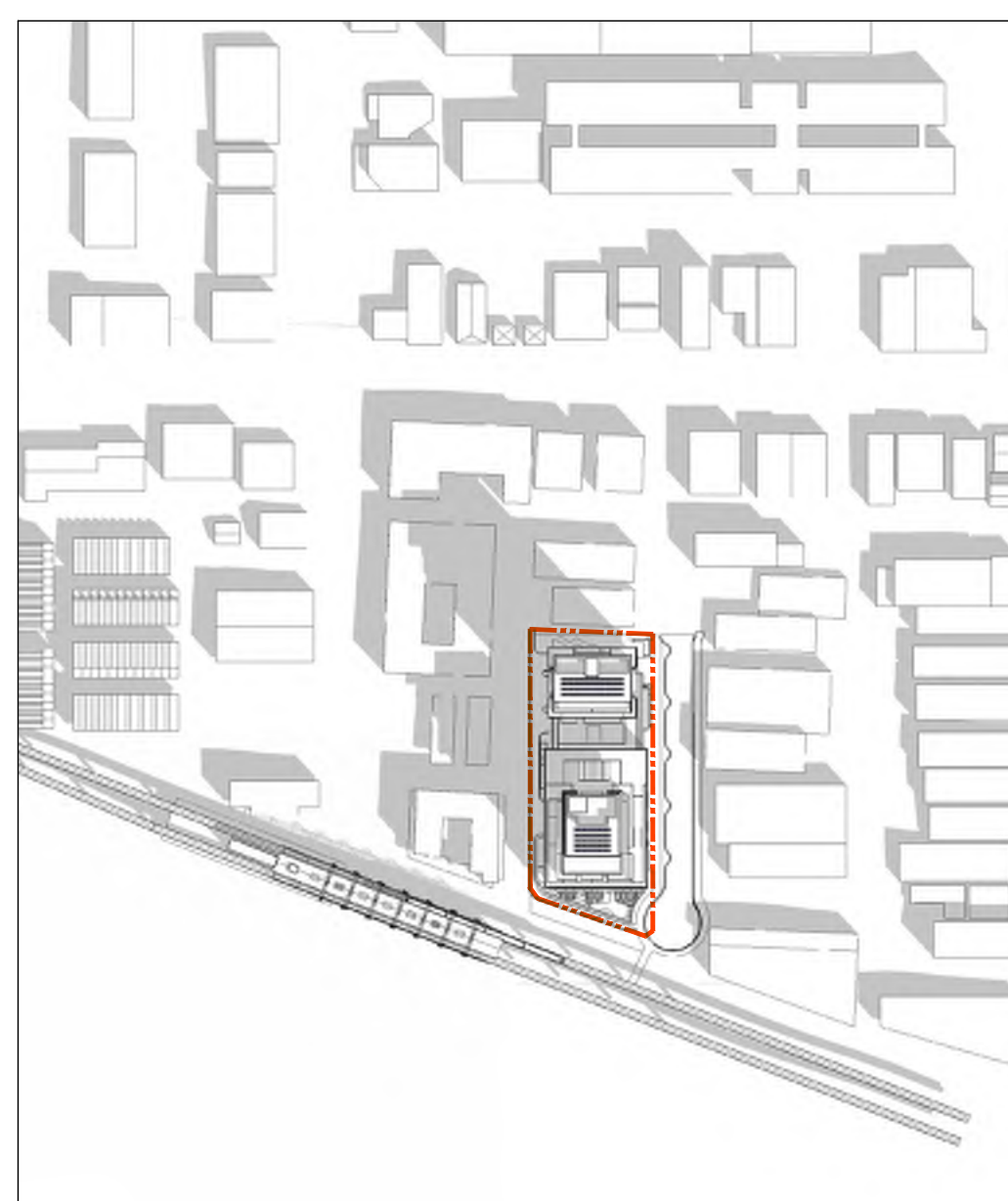
1 DECEMBER 21 - 10 AM



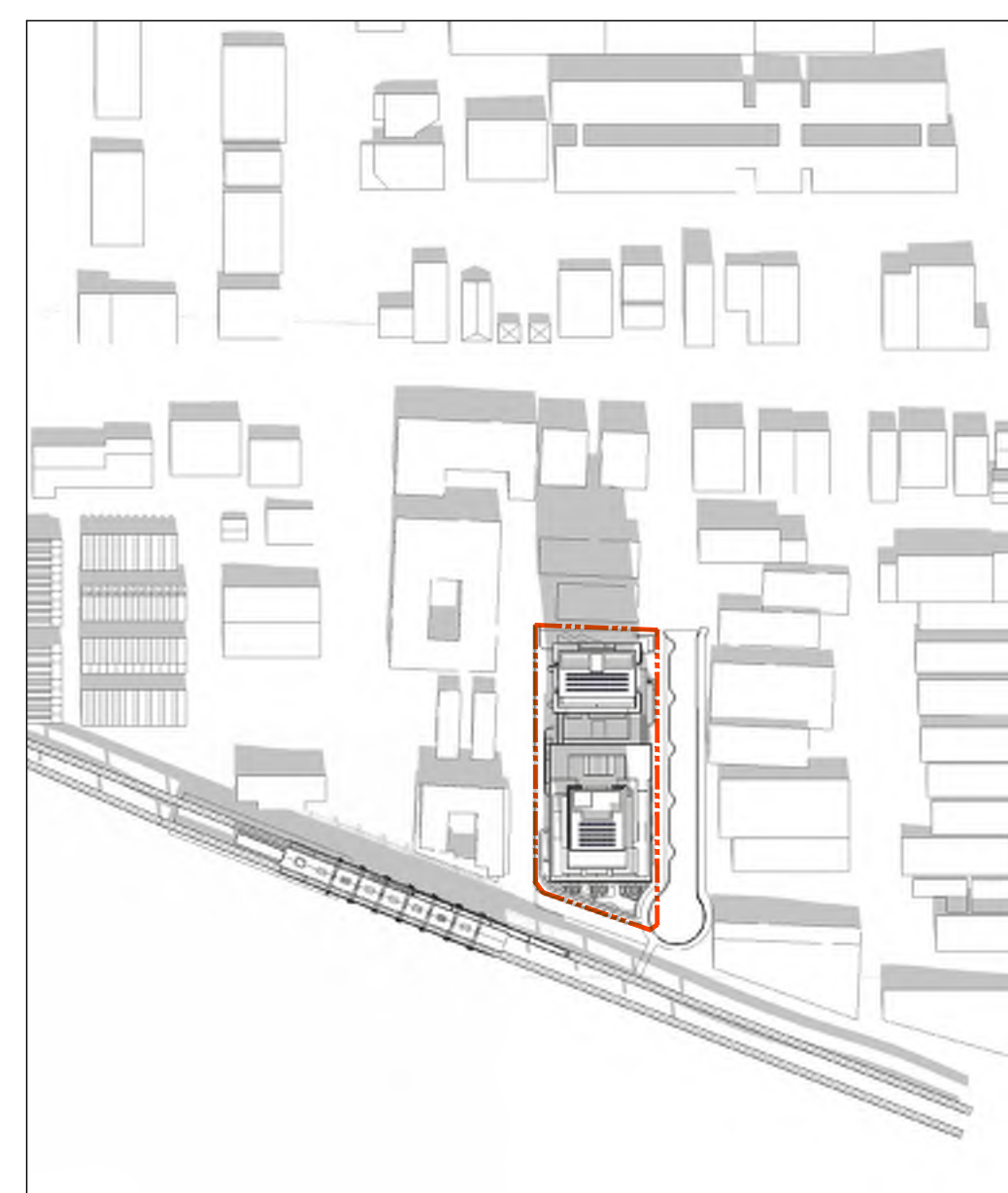
2 DECEMBER 21 - 12 PM



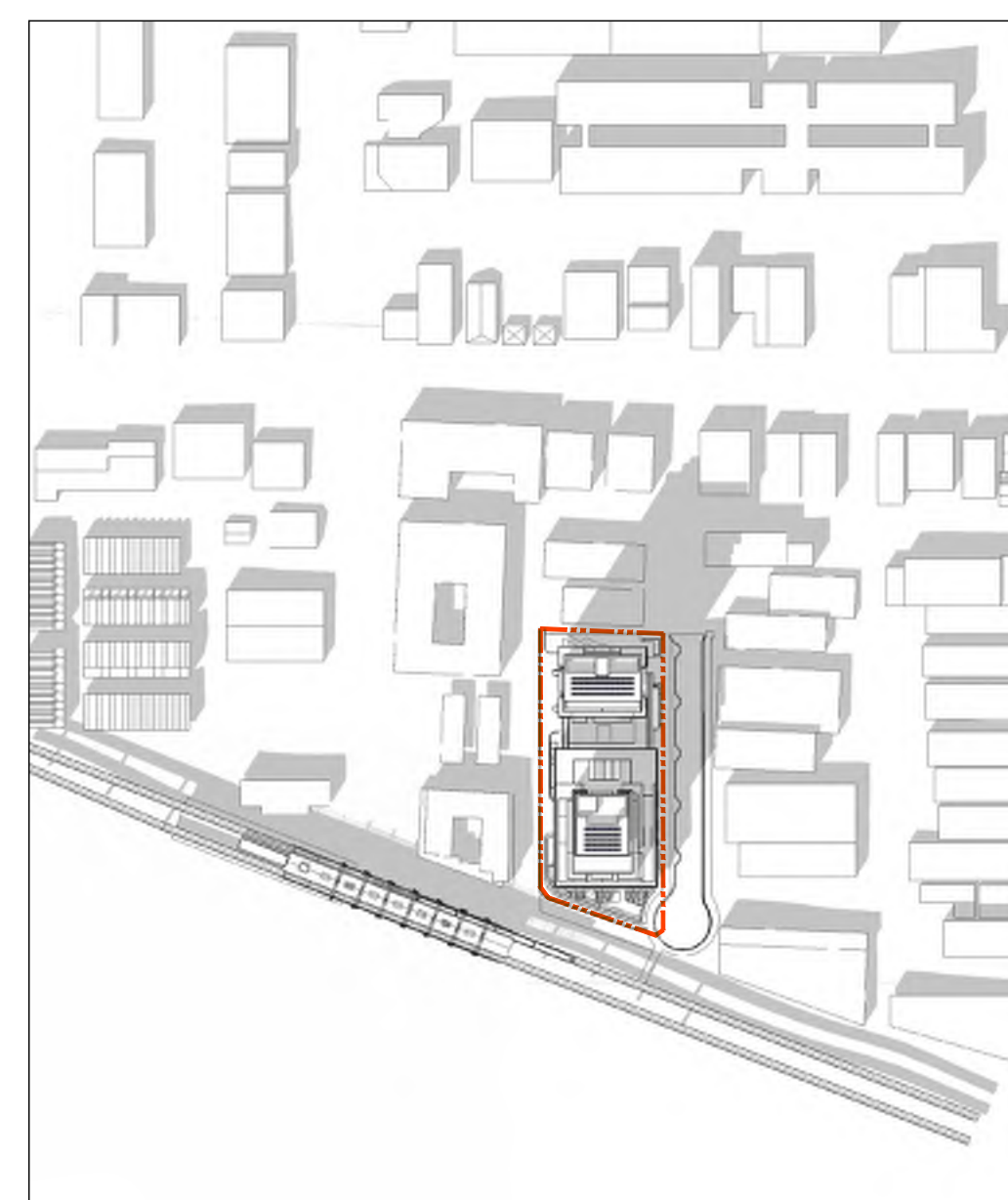
3 DECEMBER 21 - 2 PM



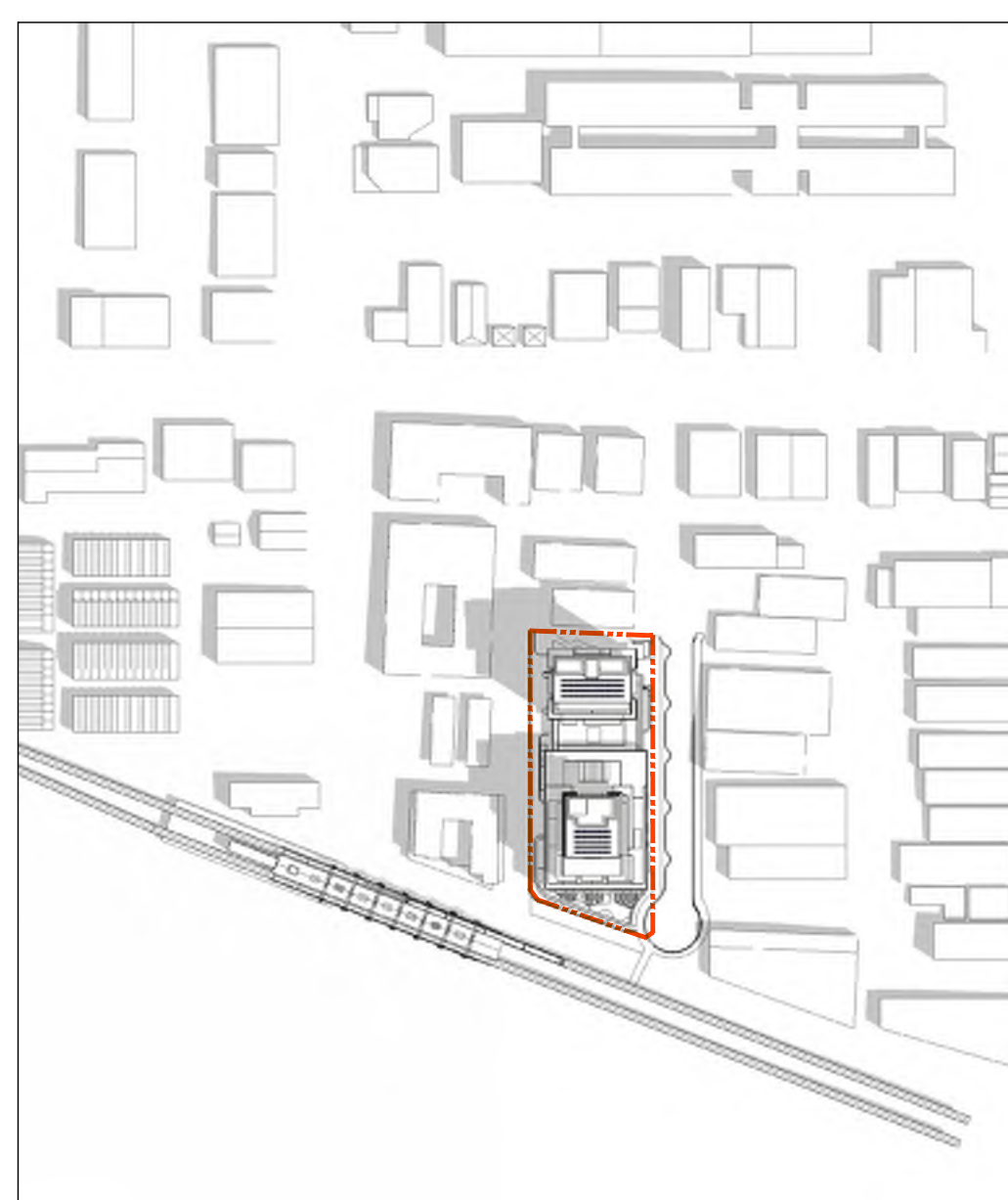
4 MARCH/SEPTEMBER 21 - 10 AM



5 MARCH/SEPTEMBER 21 - 12 PM



6 MARCH/SEPTEMBER 21 - 2 PM



7 JUNE 21 - 10 AM

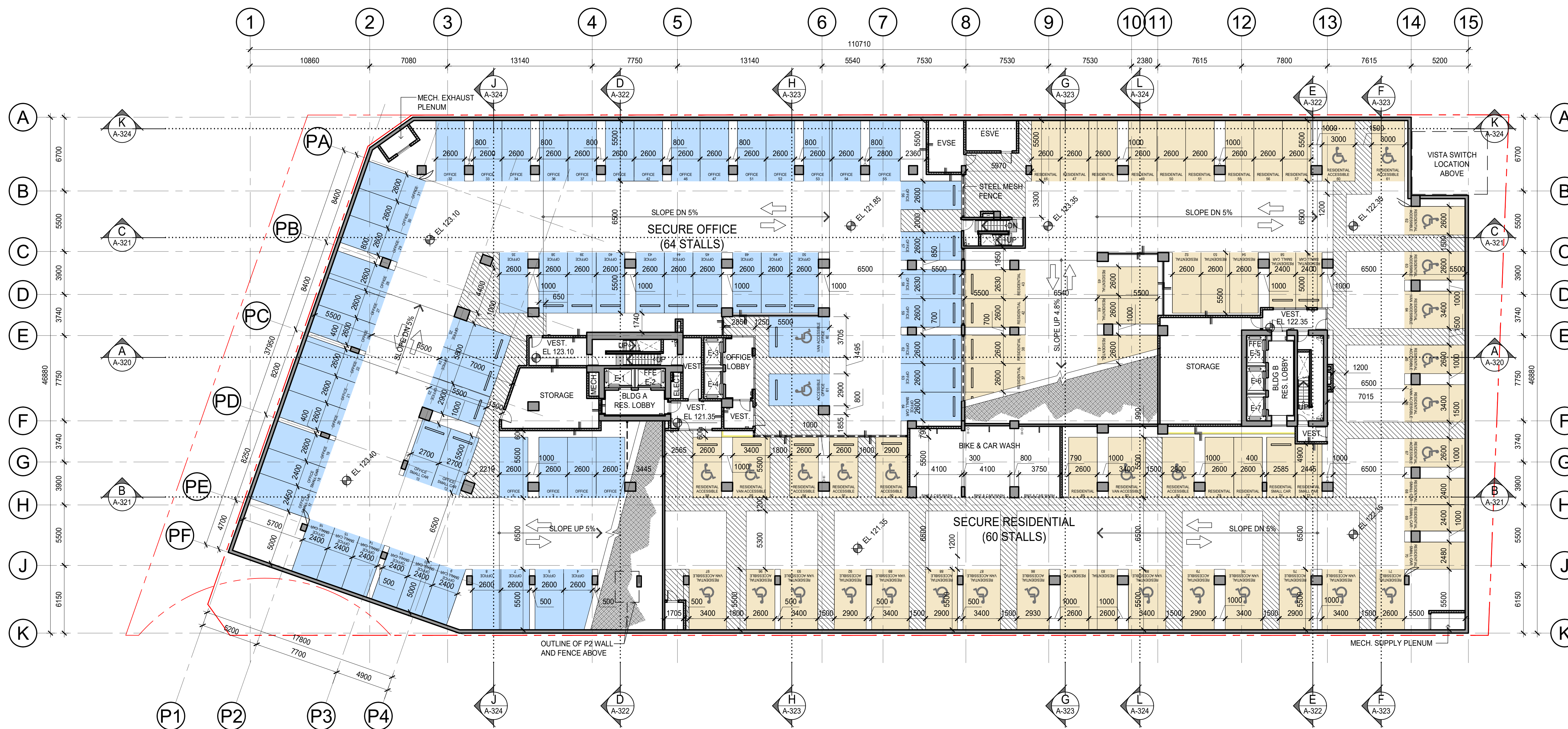
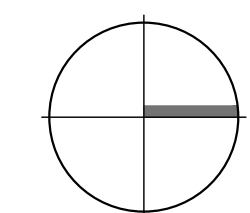


8 JUNE 21 - 12 PM



9 JUNE 21 - 2 PM

KEY PLAN



| No. | Description | Date | Dr. |
|-----|--------------------------|-------------|-----|
| - | AMENDED DEVELOPMENT PLAN | JUL 28 2023 | |
| - | AMENDED DEVELOPMENT PLAN | JUL 7 2023 | |
| - | ISSUED FOR SPOD REVIEW | JUN 12 2023 | |
| - | ISSUED FOR SPOD REVIEW | FEB 11 2022 | |
| - | ISSUED FOR SPOD REVIEW | FEB 03 2022 | |
| - | ISSUED FOR SPOD REVIEW | JAN 31 2022 | |
| - | ISSUED FOR SPOD REVIEW | JAN 21 2022 | |
| - | ISSUED FOR SPOD REVIEW | DEC 08 2021 | |
| - | ISSUED FOR SPOD REVIEW | NOV 22 2021 | |
| - | ISSUED FOR SPOD REVIEW | JUN 14 2021 | |

Revisions: Read Up



DA Architects + Planners
 >> 200 - 1014 Homer Street, Vancouver
 British Columbia, Canada V6B 2W9
 T 604 685 6312
 F 604 685 0988
 www.da-architects.ca

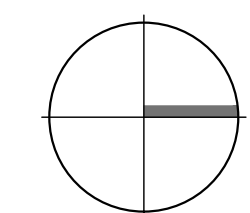
AMENDED DEVELOPMENT
 PLAN - REZ20-27
 6877, 6891, 6913, 6939, 6945 PALM AVENUE
 BURNABY, BC

Copyright Reserved. This plan and design are, and at all times remain the exclusive property of DA Architects + Planners, and cannot be used or reproduced without the Architect's written consent.

Sheet Title
 PARKING PLAN P3

| | | | |
|----------|------------|-----------|-------|
| Job No. | 20-08-000 | Sheet No. | A-301 |
| Scale | 1:200 | | |
| Drawn | | | |
| Checked | | | |
| Approved | | | |
| Date | 2021.02.02 | Revision | |

KEY PLAN



| No. | Description | Date | Dr. |
|-----|--------------------------|-------------|-----|
| - | AMENDED DEVELOPMENT PLAN | JUL 28 2023 | |
| - | AMENDED DEVELOPMENT PLAN | JUL 7 2023 | |
| - | ISSUED FOR SPOD REVIEW | JUN 12 2023 | |
| - | ISSUED FOR SPOD REVIEW | FEB 11 2022 | |
| - | ISSUED FOR SPOD REVIEW | FEB 03 2022 | |
| - | ISSUED FOR SPOD REVIEW | JAN 31 2022 | |
| - | ISSUED FOR SPOD REVIEW | JAN 21 2022 | |
| - | ISSUED FOR SPOD REVIEW | DEC 08 2021 | |
| - | ISSUED FOR SPOD REVIEW | NOV 22 2021 | |
| - | ISSUED FOR SPOD REVIEW | JUN 14 2021 | |

Revisions: Read Up



DA Architects + Planners
 >> 200 - 1014 Homer Street, Vancouver
 British Columbia, Canada V6B 2W9
 T 604 685 6312
 F 604 685 0988
 www.da-architects.ca

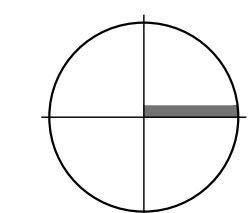
AMENDED DEVELOPMENT
 PLAN - REZ20-27
 6877, 6891, 6913, 6939, 6945 PALM AVENUE
 BURNABY, BC

Copyright Reserved. This plan and design are, and at all times remain
 the exclusive property of DA Architects + Planners, and cannot be used
 or reproduced without the Architect's written consent.

Sheet Title
PARKING PLAN P2

| | | | | |
|----------|------------|-----------|-------|---|
| Job No. | 20-08-000 | Sheet No. | | |
| Scale | 1:200 | | | |
| Drawn | | | A-302 | |
| Checked | | | | |
| Approved | | | | |
| Date | 2021.02.02 | Revision | | - |

KEY PLAN



| No. | Description | Date | Dr. |
|-----|--------------------------|-------------|-----|
| - | AMENDED DEVELOPMENT PLAN | JUL 28 2023 | |
| - | AMENDED DEVELOPMENT PLAN | JUL 7 2023 | |
| - | ISSUED FOR SPOD REVIEW | JUN 12 2023 | |
| - | ISSUED FOR SPOD REVIEW | FEB 11 2022 | |
| - | ISSUED FOR SPOD REVIEW | FEB 03 2022 | |
| - | ISSUED FOR SPOD REVIEW | JAN 31 2022 | |
| - | ISSUED FOR SPOD REVIEW | JAN 21 2022 | |
| - | ISSUED FOR SPOD REVIEW | DEC 08 2021 | |
| - | ISSUED FOR SPOD REVIEW | NOV 22 2021 | |
| - | ISSUED FOR SPOD REVIEW | JUN 14 2021 | |

Revisions: Read Up



DA
 DA Architects + Planners
 >> 200 - 1014 Homer Street, Vancouver
 British Columbia, Canada V6B 2W9
 T 604 685 6312
 F 604 685 0988
 www.da-architects.ca

AMENDED DEVELOPMENT
 PLAN - REZ20-27
 6877, 6891, 6913, 6939, 6945 PALM AVENUE
 BURNABY, BC

Copyright Reserved. This plan and design are, and at all times remain the exclusive property of DA Architects + Planners, and cannot be used or reproduced without the Architect's written consent.

Sheet Title
PARKING PLAN P1

| | | | |
|----------|------------|-----------|-------|
| Job No. | 20-08-000 | Sheet No. | A-303 |
| Scale | 1:200 | | |
| Drawn | | | |
| Checked | | | |
| Approved | | | |
| Date | 2021.02.02 | Revision | |