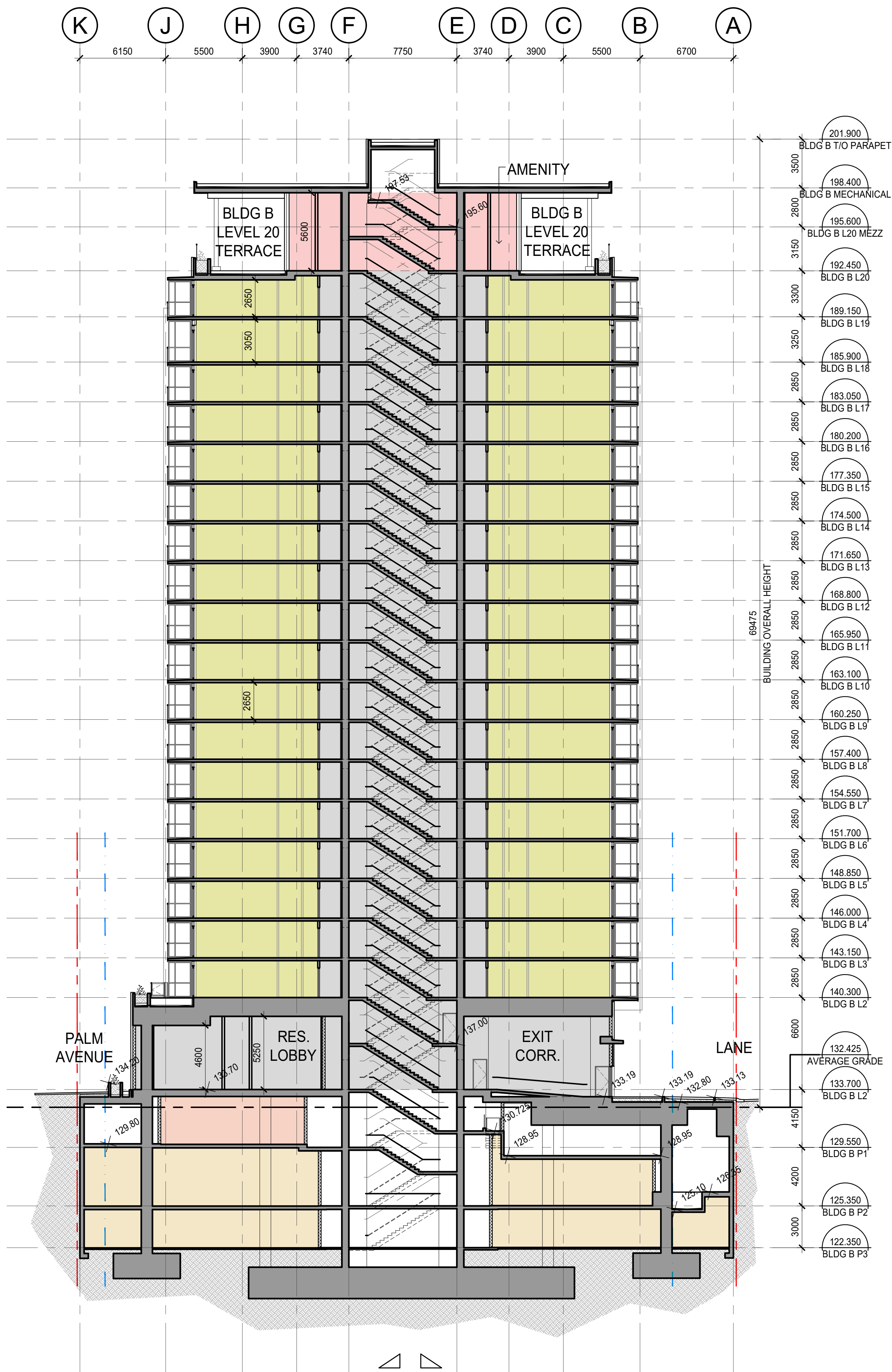




1 SECTION D
1:200



2 SECTION E
1:200

No.	Description	Date	Dr.
-	AMENDED DEVELOPMENT PLAN	JUL 28 2023	
-	AMENDED DEVELOPMENT PLAN	JUL 7 2023	
-	ISSUED FOR SPOD REVIEW	JUN 12 2023	
-	ISSUED FOR SPOD REVIEW	FEB 11 2022	
-	ISSUED FOR SPOD REVIEW	FEB 03 2022	
-	ISSUED FOR SPOD REVIEW	JAN 31 2022	
-	ISSUED FOR SPOD REVIEW	JAN 21 2022	
-	ISSUED FOR SPOD REVIEW	DEC 08 2021	
-	ISSUED FOR SPOD REVIEW	NOV 22 2021	
-	ISSUED FOR SPOD REVIEW	JUN 14 2021	

Revisions: Read Up



DA
DA Architects + Planners
200 - 1014 Homer Street, Vancouver
British Columbia, Canada V6B 2W9
T 604 685 6312
F 604 685 0988
www.da-architects.ca

AMENDED DEVELOPMENT PLAN - REZ20-27
6877, 6891, 6913, 6939, 6945 PALM AVENUE
BURNABY, BC

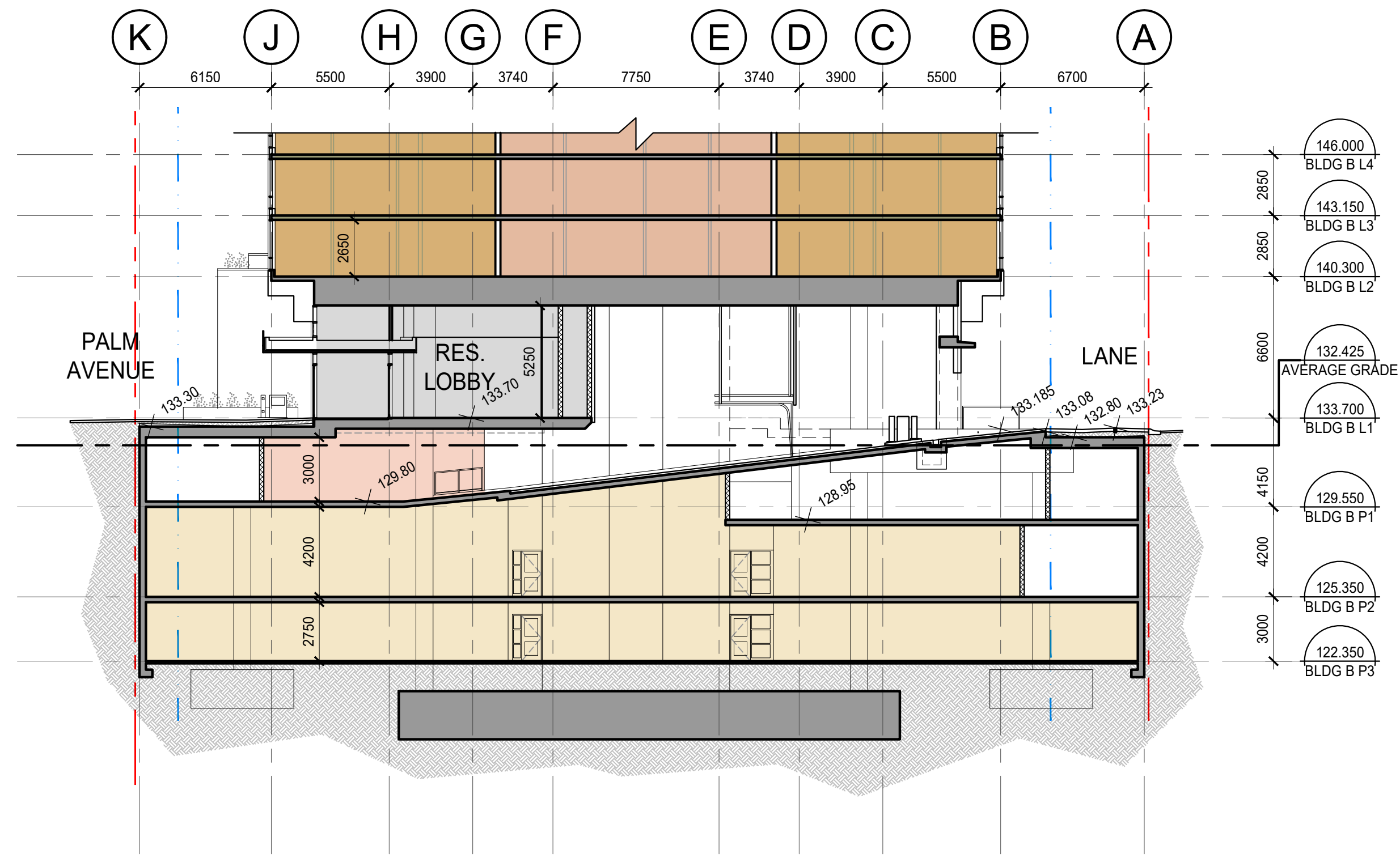
Copyright Reserved. This plan and design are, and at all times remain the exclusive property of DA Architects + Planners, and cannot be used or reproduced without the Architect's written consent.

Sheet Title
BUILDING SECTIONS

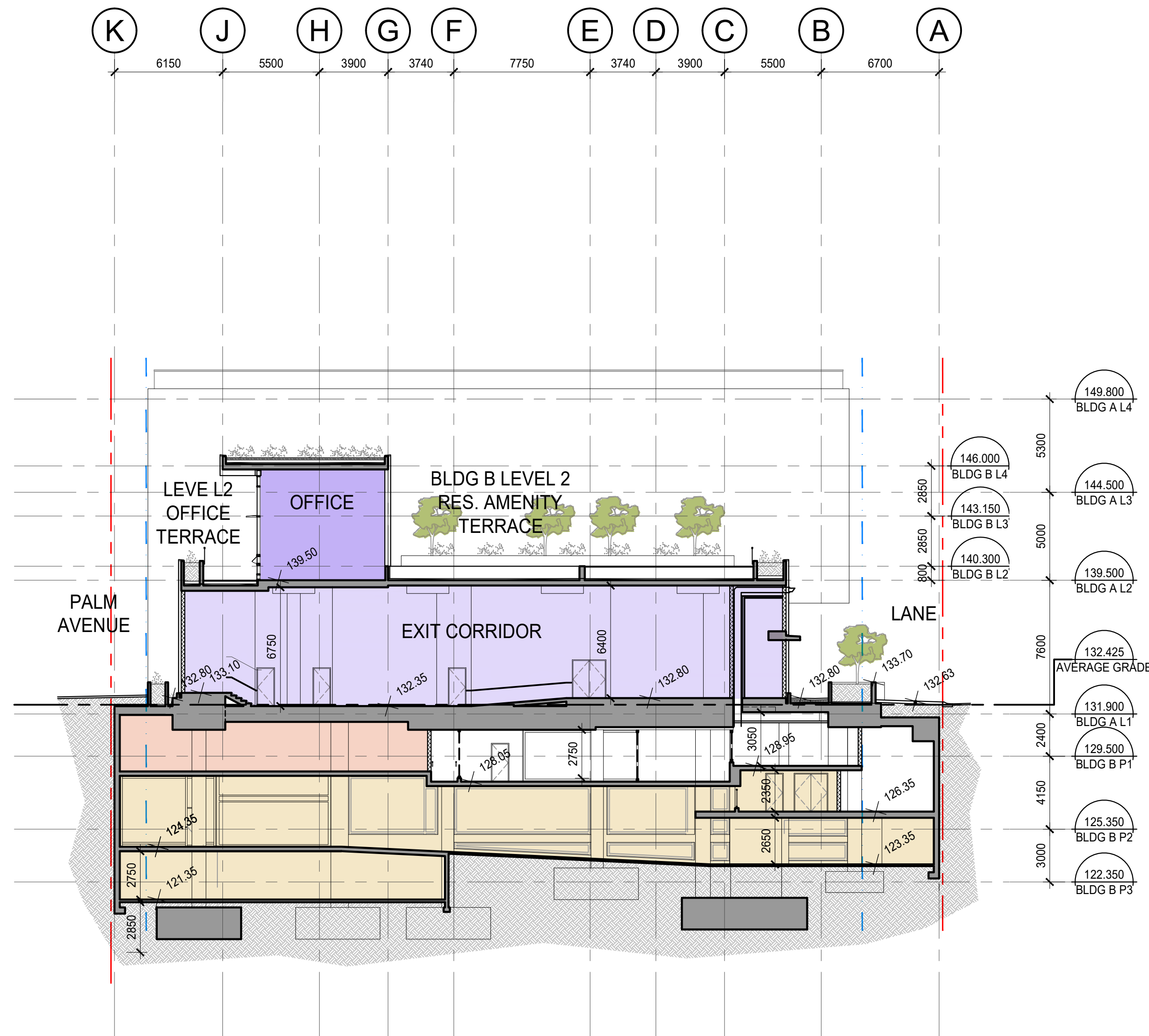
Job No.	20-08-000	Sheet No.	
Scale	1:200		
Drawn			A-322
Checked			
Approved			
Date	2021.02.02	Revision	-

No.	Description	Date	Dr.
-	AMENDED DEVELOPMENT PLAN	JUL 28 2023	
-	AMENDED DEVELOPMENT PLAN	JUL 7 2023	
-	ISSUED FOR SPOD REVIEW	JUN 12 2023	
-	ISSUED FOR SPOD REVIEW	FEB 11 2022	
-	ISSUED FOR SPOD REVIEW	FEB 03 2022	
-	ISSUED FOR SPOD REVIEW	JAN 31 2022	
-	ISSUED FOR SPOD REVIEW	JAN 21 2022	
-	ISSUED FOR SPOD REVIEW	DEC 08 2021	
-	ISSUED FOR SPOD REVIEW	NOV 22 2021	
-	ISSUED FOR SPOD REVIEW	JUN 14 2021	

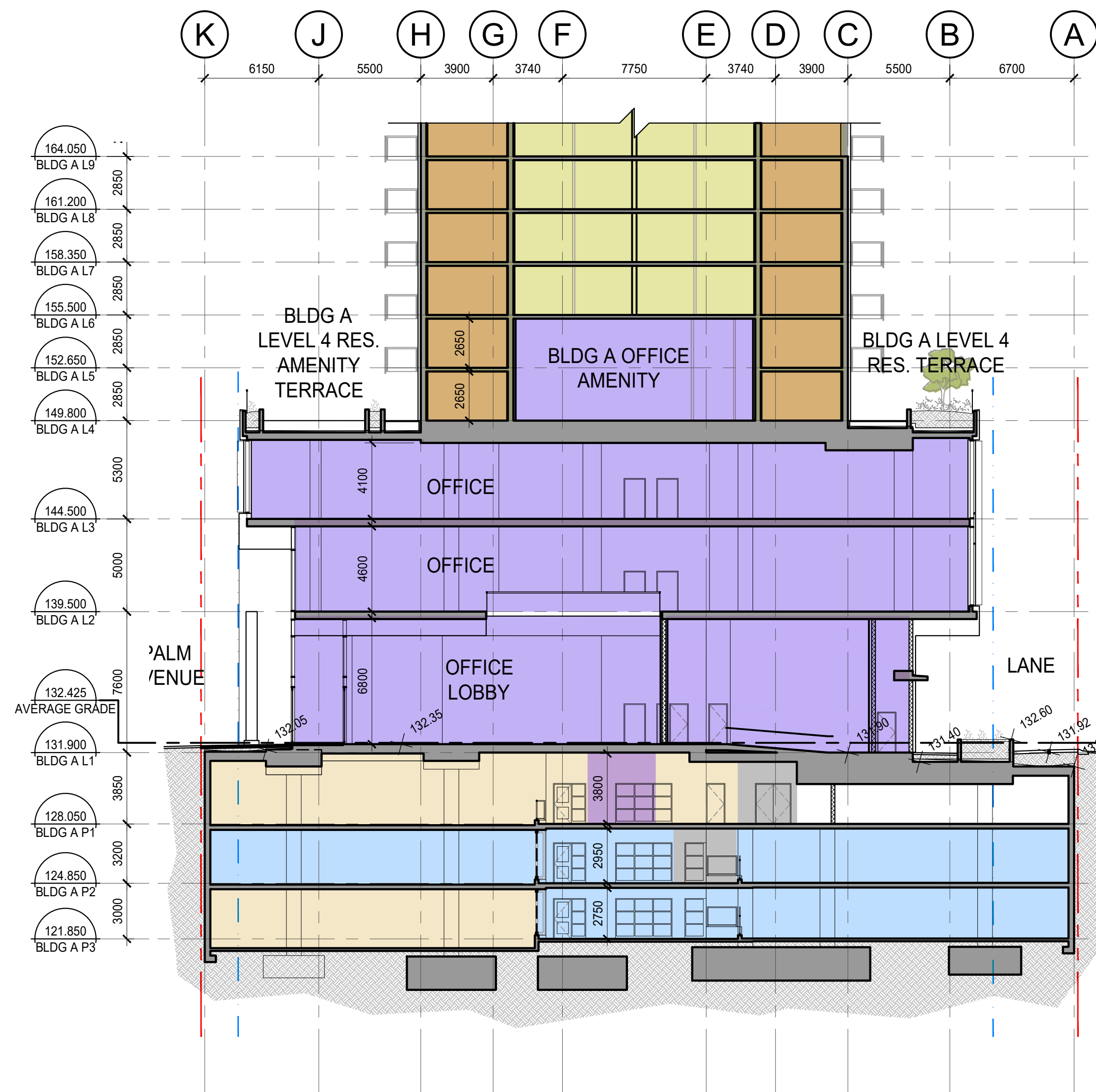
Revisions: Read Up



1 SECTION F
1:200



2 SECTION G
1:200



3 SECTION H
1:200



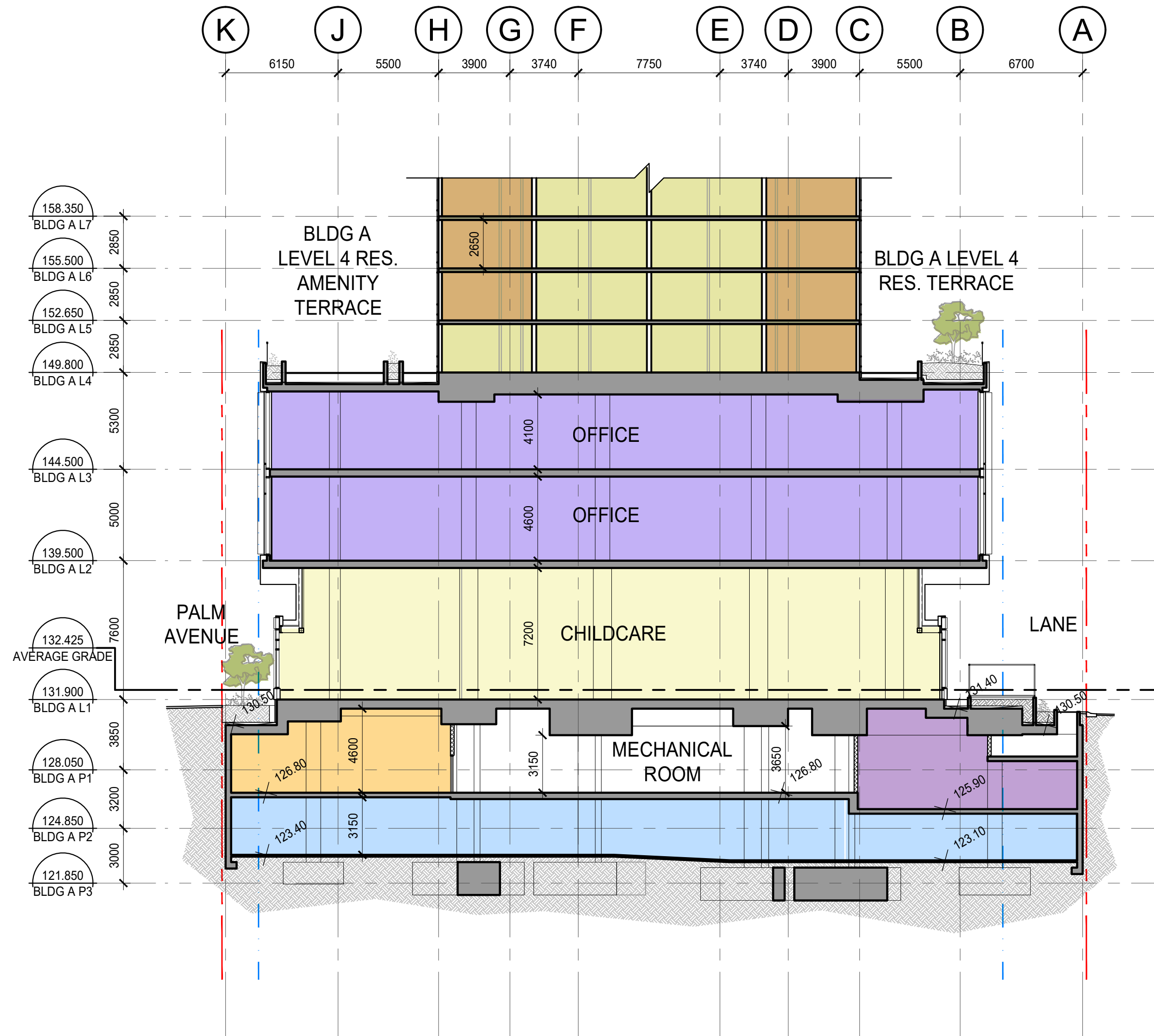
DA
DA Architects + Planners
200 - 1014 Homer Street, Vancouver
British Columbia, Canada V6B 2W9
T 604 685 6312
F 604 685 0988
www.da-architects.ca

AMENDED DEVELOPMENT PLAN - REZ20-27
6877, 6891, 6913, 6939, 6945 PALM AVENUE BURNABY, BC

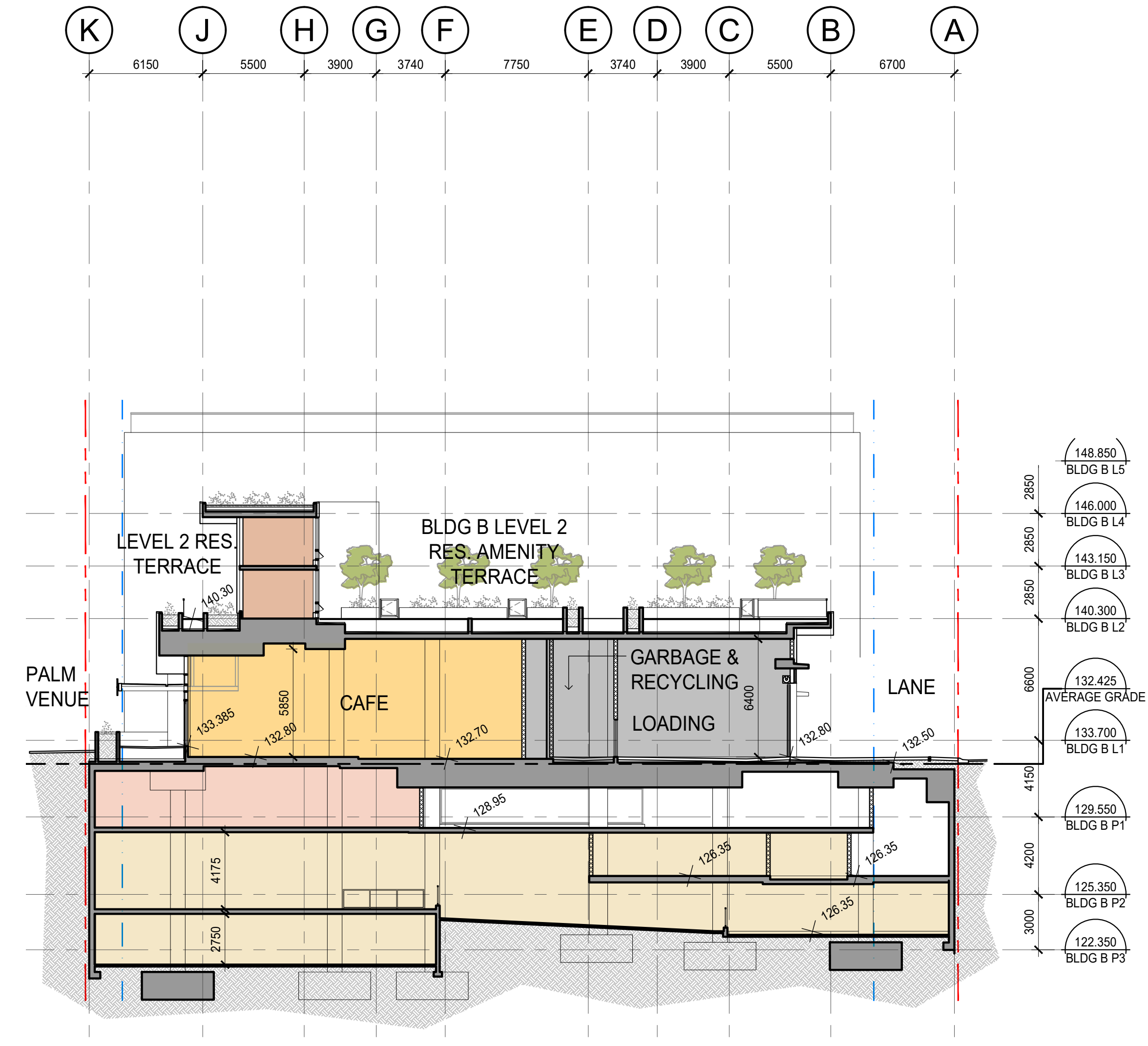
Copyright Reserved. This plan and design are, and at all times remain the exclusive property of DA Architects + Planners, and cannot be used or reproduced without the Architect's written consent.

Sheet Title
BUILDING SECTIONS

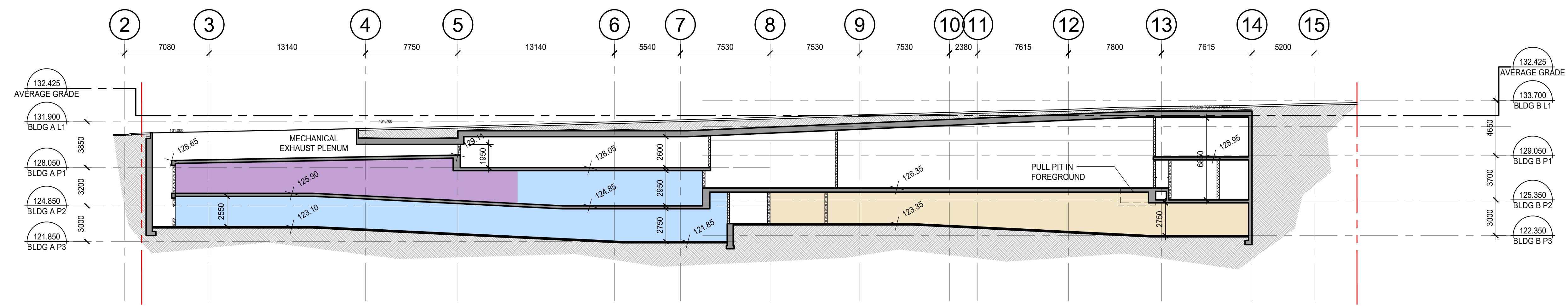
Job No.	20-08-000	Sheet No.	A-323
Scale	1:200		
Drawn	AM		
Checked	MC		
Approved			
Date	2021.02.02	Revision	-



1 SECTION J
1:200



3 SECTION L
1:200



2 SECTION K
1:200

No.	Description	Date	Dr.
-	AMENDED DEVELOPMENT PLAN	JUL 28 2023	
-	AMENDED DEVELOPMENT PLAN	JUL 7 2023	
-	ISSUED FOR SPOD REVIEW	JUN 12 2023	
-	ISSUED FOR SPOD REVIEW	FEB 11 2022	
-	ISSUED FOR SPOD REVIEW	FEB 03 2022	
-	ISSUED FOR SPOD REVIEW	JAN 31 2022	
-	ISSUED FOR SPOD REVIEW	JAN 21 2022	
-	ISSUED FOR SPOD REVIEW	DEC 08 2021	
-	ISSUED FOR SPOD REVIEW	NOV 22 2021	
-	ISSUED FOR SPOD REVIEW	JUN 14 2021	

Revisions: Read Up



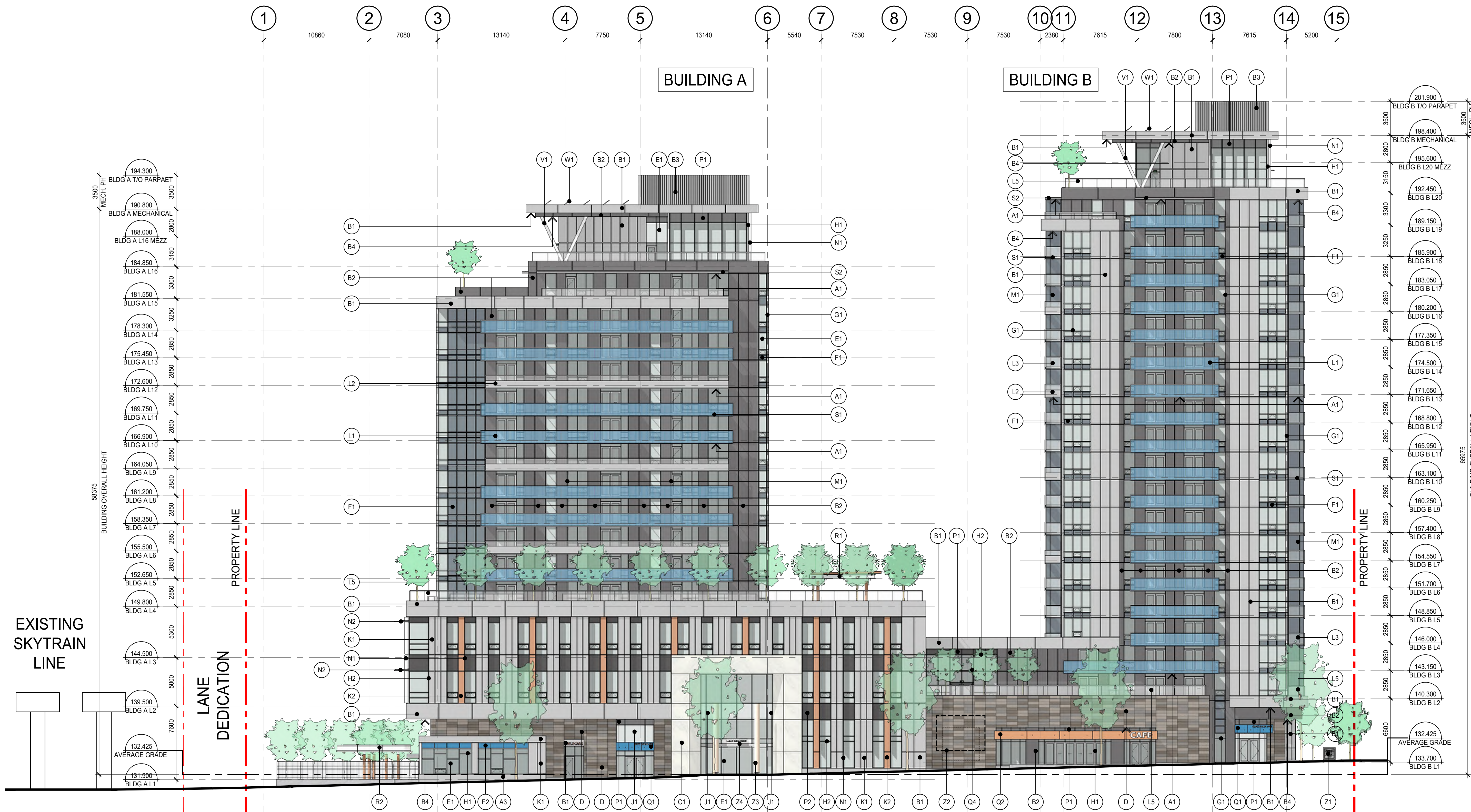
DA
DA Architects + Planners
200 - 1014 Homer Street, Vancouver
British Columbia, Canada V6B 2W9
T 604 685 6312
F 604 685 0988
www.da-architects.ca

AMENDED DEVELOPMENT PLAN - REZ20-27
6877, 6891, 6913, 6939, 6945 PALM AVENUE
BURNABY, BC

Copyright Reserved. This plan and design are, and at all times remain the exclusive property of DA Architects + Planners, and cannot be used or reproduced without the Architect's written consent.

Sheet Title
BUILDING SECTIONS

Job No.	20-08-000	Sheet No.	
Scale	-		
Drawn	AM		A-324
Checked	MC		
Approved			
Date	2021.02.02	Revision	-



No.	Description	Date	Dr.
-	AMENDED DEVELOPMENT PLAN	JUL 28 2023	
-	AMENDED DEVELOPMENT PLAN	JUL 7 2023	
-	ISSUED FOR SPOD REVIEW	JUN 12 2023	
-	ISSUED FOR SPOD REVIEW	FEB 11 2022	
-	ISSUED FOR SPOD REVIEW	FEB 03 2022	
-	ISSUED FOR SPOD REVIEW	JAN 31 2022	
-	ISSUED FOR SPOD REVIEW	JAN 21 2022	
-	ISSUED FOR SPOD REVIEW	DEC 08 2021	
-	ISSUED FOR SPOD REVIEW	NOV 22 2021	
-	ISSUED FOR SPOD REVIEW	JUN 14 2021	

Revisions: Read Up



DA
DA Architects + Planners
200 - 1014 Homer Street, Vancouver
British Columbia, Canada V6B 2W9
T 604 685 6312
F 604 685 0988
www.da-architects.ca

AMENDED DEVELOPMENT PLAN - REZ20-27
6877, 6891, 6913, 6939, 6945 PALM AVENUE
BURNABY, BC

Copyright Reserved. This plan and design are, and at all times remain the exclusive property of DA Architects + Planners, and cannot be used or reproduced without the Architect's written consent.

Sheet Title
BUILDING ELEVATIONS

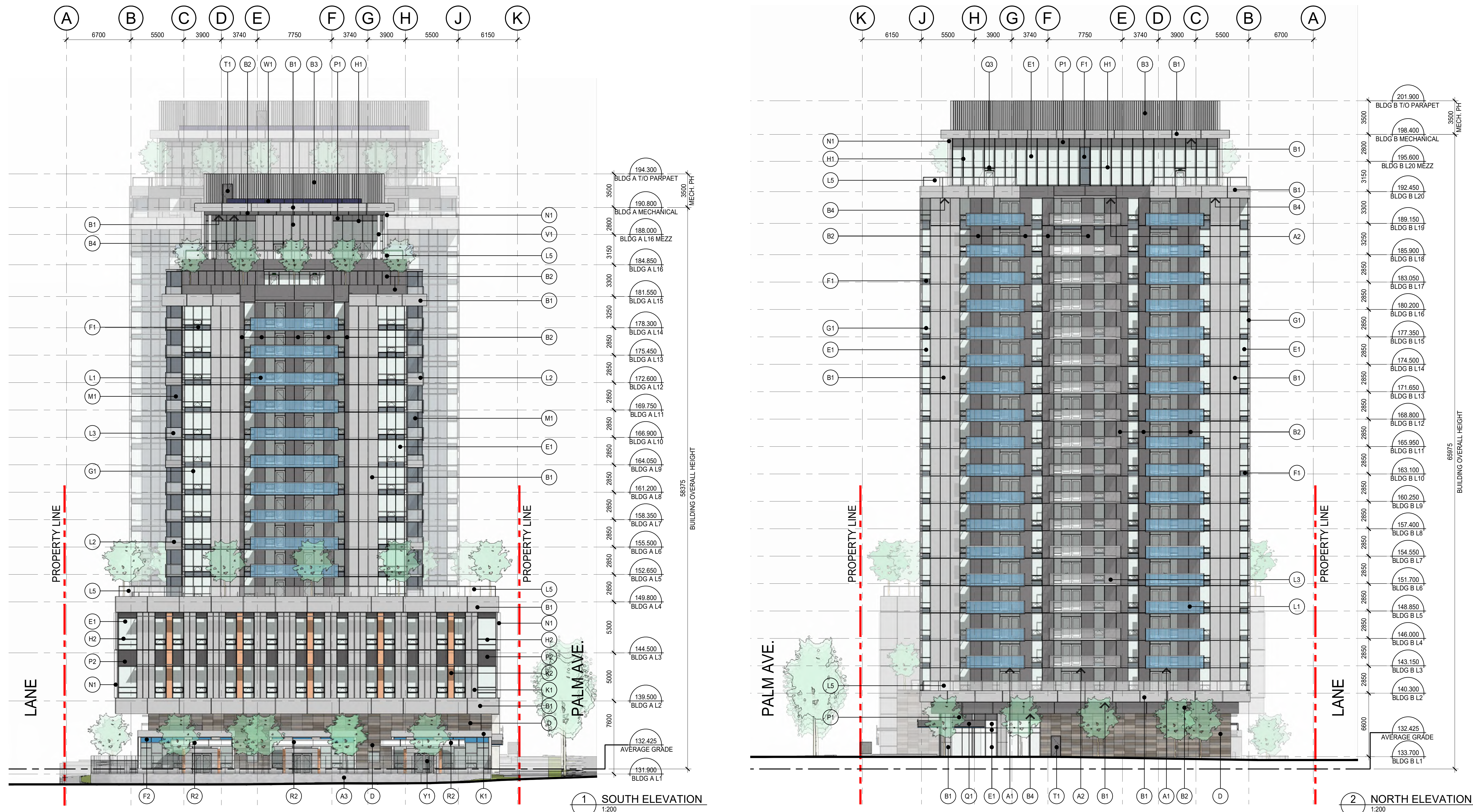
Job No.	20-08-000	Sheet No.	
Scale	1:200		
Drawn			
Checked			
Approved			
Date	2021.02.02	Revision	

A-330

1 EAST ELEVATION
1:200

MATERIAL & FINISH SCHEDULE

- A ARCHITECTURAL FINISHED CONCRETE**
A1: WHITE - PAINTED TO MATCH BM *2121-50 ICED CUBE SILVER*
A2: BROWN - PAINTED TO MATCH BM *CC-390 RUSTY NAIL*
A3: GREY - PAINTED TO MATCH BM *2124-40 THUNDERCLOUD GRAY*
A4: EXPOSED CONCRETE
- B ALUMINUM COMPOSITE METAL PANEL**
B1: LIGHT GREY - COLOUR TO MATCH 3mm ALPOLIC SOG GREY
B2: DARK GREY - COLOUR TO MATCH 3mm ALPOLIC CVG GREY
B3: LIGHT GREY - 30mm WIDE PANELS AT MECHANICAL ENCLOSURE - COLOUR TO MATCH 3mm ALPOLIC SOG GREY
B4: WOOD GRAIN SOFFIT - COLOUR TO MATCH PROMARK ELM GOLDEN SPICE (EGS-202)
- C STONE TILE**
C1: WHITE - COLOUR TO MATCH XTONE GLEM WHITE NATURE
- D CEMENTITIOUS PANEL**
D1, D2, D3 COLOURS ARE USED IN A PATTERN)
D1: WHITE - COLOUR TO MATCH EQUITONE TECTIVA T60
D2: TAN - COLOUR TO MATCH EQUITONE TECTIVA T60
D3: GREY - COLOUR TO MATCH EQUITONE TECTIVA T60
- E WINDOW GLAZING**
E1: CLEAR LOW-E GLASS
E2: FROSTED GLASS
- F SPANDREL GLASS**
F1: LIGHT BLUE - COLOUR TO MATCH BM *HC-159 PHILPSBURG BLUE*
F2: BLUE - COLOUR TO MATCH BM *2063-40 SAILOR'S SEA BLUE*
- G WINDOW WALL FRAME**
G1: LIGHT GREY - POWDER COATED TO MATCH BM *2124-40 THUNDERCLOUD GRAY*
- H CURTAIN WALL FRAME**
H1: LIGHT GREY - POWDER COATED TO MATCH BM *2124-40 THUNDERCLOUD GRAY*
H2: CHARCOAL - POWDER COATED TO MATCH BM *2124-20 TROUT GRAY*
- J CURTAIN WALL SHADOW BOX**
J1: WHITE - COLOUR TO MATCH BM *2121-50 ICED CUBE SILVER*
- K CURTAIN WALL RAISED ALUMINUM PANEL**
K1: LIGHT GREY - TO MATCH 3mm ALPOLIC SOG GREY
K2: COPPER - COLOUR TO MATCH 3mm ALPOLIC MTLG DCX CPPR
- L GUARDRAIL**
L1: FASCIA MOUNT POWDER COATED FRAME & RAIL TO MATCH BM *2124-40 THUNDERCLOUD GRAY* C/W VARIABLE STRIPED BLUE FRIT GLASS TO MATCH BM *2063-40 SAILOR'S SEA BLUE*
L2: FASCIA MOUNT POWDER COATED FRAME & RAIL TO MATCH BM *2124-40 THUNDERCLOUD GRAY* C/W HALF-HEIGHT BACK PAINTED GLASS TO MATCH LIGHT GREY - COLOUR TO MATCH 3mm ALPOLIC SOG GREY
L3: FASCIA MOUNT POWDER COATED FRAME & RAIL TO MATCH BM *2124-40 THUNDERCLOUD GRAY* C/W CLEAR GLASS
L4: TOP MOUNT POWDER COATED FRAME & RAIL TO MATCH BM *2124-40 THUNDERCLOUD GRAY* C/W CLEAR GLASS
L5: INSIDE MOUNT POWDER COATED FRAME & RAIL TO MATCH BM *2124-40 THUNDERCLOUD GRAY* C/W CLEAR GLASS
- M PRIVACY SCREEN**
M1: FROSTED GLASS TO MATCH BM *HC-159 PHILPSBURG BLUE* C/W POWDER COATED ALUMINUM FRAME TO MATCH BM *2124-40 THUNDERCLOUD GRAY*
- N SUNSHADE**
N1: CURTAIN WALL ALUMINUM ATTACHMENT TO MATCH FRAME COLOUR C/W DOTTED WHITE FRIT GLASS SUNSHADE
N2: CURTAIN WALL ALUMINUM ATTACHMENT TO MATCH FRAME COLOUR C/W VARIABLE-STRIPED WHITE FRIT GLASS SUNSHADE
- P ARCHITECTURAL LOUVER**
P1: DARK GREY - COLOUR TO MATCH BM *2124-20 TROUT GRAY*
P2: CHARCOAL - COLOUR TO MATCH BM *2119-30 BABY SEAL BLACK*
- Q STEEL & GLASS CANOPIES**
Q1: STEEL CANOPY WRAPPED IN B2 MATERIAL W/ BLUE GLASS FASCIA & SOFFIT TO MATCH BM *2063-40 SAILOR'S SEA BLUE*
Q2: PAINTED STEEL CANOPY TO MATCH BM *2124-20 TROUT GRAY* C/W BROWN GLASS TO MATCH BM *CC-390 RUSTY NAIL* - OVERHEAD MOUNTED VARIABLE-STRIPED FRIT & FASCIA MOUNTED BACK-PAINTED
Q3: PAINTED STEEL CANOPY TO MATCH BM *2124-40 THUNDERCLOUD GRAY* W/ CLEAR GLASS
Q4: PAINTED STEEL CANOPY TO MATCH BM *2124-20 TROUT GRAY*
- R TRELLIS**
R1: STEEL TRELLIS PAINTED TO MATCH BM *2121-50 ICED CUBE SILVER* C/W VARIABLE STRIPED WHITE FRIT GLASS
R2: PAINTED STEEL TRELLIS TO MATCH BM *2121-50 ICED CUBE SILVER* C/W ORANGE TINTED FROSTED GLASS TO MATCH BM *2015-20 ORANGE BURST* - BLUE TINTED FROSTED GLASS TO MATCH BM *784 BLUE MAGNIA* & WHITE TINTED FROSTED GLASS
- S TRAFFIC COATING**
S1: LIGHT - NEOGARD *LIGHT GREY*
S2: DARK - NEOGARD *CHARCOAL*
- T STEEL DOORS/GATES**
T1: DARK GREY - COLOUR TO MATCH BM *2124-20 TROUT GRAY*
- V ARCHITECTURAL STEEL STRUCTURE**
V1: WHITE - COLOUR TO MATCH BM *2121-50 ICED CUBE SILVER*
- W SOLAR PANELS**
W1: SOLAR PANEL
- X CORRUGATED METAL**
X1: LIGHT GREY - COLOUR TO MATCH BM *2124-40 THUNDERCLOUD GRAY*
- Y MISCELLANEOUS METAL**
Y1: CHLDRCARE PICKET SECURITY FENCE - REFER TO LANDSCAPE DWGS
- Z MISCELLANEOUS FEATURES**
Z1: BCGEU CORNER STONE
Z2: INDIGENOUS ART - DESIGN BY COMMISSIONED ARTIST
Z3: FEATURE ART POLES - DESIGN TO BE DETERMINED BY COMMISSIONED ARTIST AND TO BE FURTHER ELABORATED ON AT PPA STAGE
Z4: ENTRY INSCRIPTION - COLOUR TO MATCH BM *2138-70 GRAY LAKE* TEXT TO BE "LABOR OMNIA VINCIT"



No.	Description	Date	Dr.
-	AMENDED DEVELOPMENT PLAN	JUL 28 2023	
-	AMENDED DEVELOPMENT PLAN	JUL 7 2023	
-	ISSUED FOR SPOD REVIEW	JUN 12 2023	
-	ISSUED FOR SPOD REVIEW	FEB 11 2022	
-	ISSUED FOR SPOD REVIEW	FEB 03 2022	
-	ISSUED FOR SPOD REVIEW	JAN 31 2022	
-	ISSUED FOR SPOD REVIEW	JAN 21 2022	
-	ISSUED FOR SPOD REVIEW	DEC 08 2021	
-	ISSUED FOR SPOD REVIEW	NOV 22 2021	
-	ISSUED FOR SPOD REVIEW	JUN 14 2021	

Revisions: Read Up



DA
DA Architects + Planners
200 - 1014 Homer Street, Vancouver
British Columbia, Canada V6B 2W9
T 604 685 6312
F 604 685 0988
www.da-architects.ca

AMENDED DEVELOPMENT PLAN - REZ20-27
6877, 6891, 6913, 6939, 6945 PALM AVENUE
BURNABY, BC

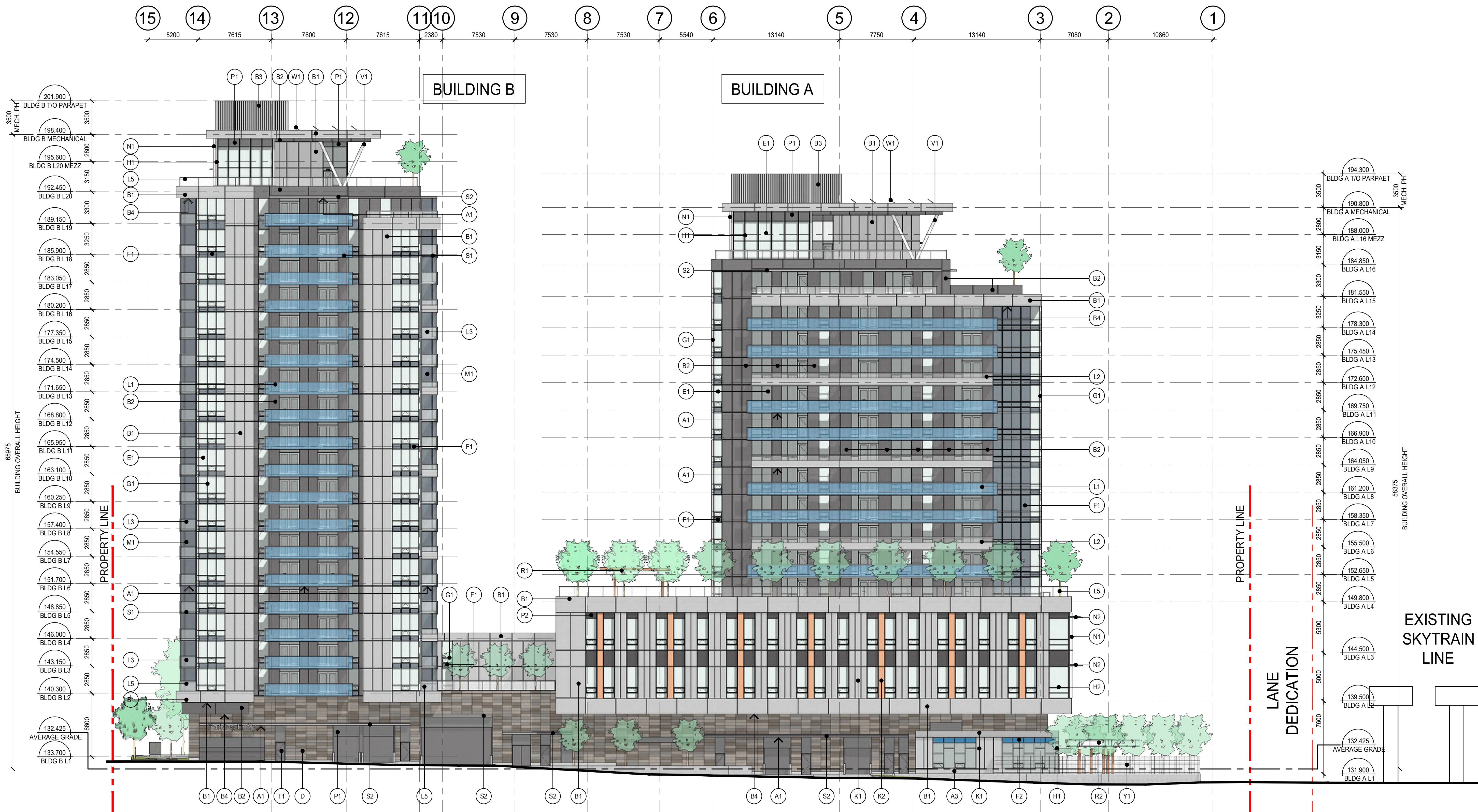
Copyright Reserved. This plan and design are, and at all times remain the exclusive property of DA Architects + Planners, and cannot be used or reproduced without the Architect's written consent.

Sheet Title
BUILDING ELEVATIONS

Job No.	20-08-000	Sheet No.	
Scale	1:200		
Drawn			
Checked			
Approved			
Date	2021.02.02	Revision	-

MATERIAL & FINISH SCHEDULE

- A ARCHITECTURAL FINISHED CONCRETE**
A1: WHITE - PAINTED TO MATCH BM "2121-50 ICED CUBE SILVER"
A2: BROWN - PAINTED TO MATCH BM "CC-390 RUSTY NAIL"
A3: GREY - PAINTED TO MATCH BM "2124-40 THUNDERCLOUD GRAY"
A4: EXPOSED CONCRETE
- B ALUMINUM COMPOSITE METAL PANEL**
B1: LIGHT GREY - COLOUR TO MATCH 3mm ALPOLIC SOG GREY
B2: DARK GREY - COLOUR TO MATCH 3mm ALPOLIC CVG GREY
B3: LIGHT GREY - 300mm WIDE PANELS AT MECHANICAL ENCLOSURE - COLOUR TO MATCH 3mm ALPOLIC SOG GREY
B4: WOOD GRAIN SOFFIT - COLOUR TO MATCH PROMARK ELM GOLDEN SPICE (EGS-202)
- C STONE TILE**
C1: WHITE - COLOUR TO MATCH XTONE GLEM WHITE NATURE
- D CEMENTITIOUS PANEL**
(D1, D2, D3 COLOURS ARE USED IN A PATTERN)
D1: WHITE - COLOUR TO MATCH EQUITONE TECTIVA TE00
D2: TAN - COLOUR TO MATCH EQUITONE TECTIVA TE60
D3: GREY - COLOUR TO MATCH EQUITONE TECTIVA TE20
- E WINDOW GLAZING**
E1: CLEAR LOW-E GLASS
E2: FROSTED GLASS
- F SPANDREL GLASS**
F1: LIGHT BLUE - COLOUR TO MATCH BM "HC-159 PHILPSBURG BLUE"
F2: BLUE - COLOUR TO MATCH BM "2063-40 SAILOR'S SEA BLUE"
- G WINDOW WALL FRAME**
G1: LIGHT GREY - POWDER COATED TO MATCH BM "2124-40 THUNDERCLOUD GRAY"
- H CURTAIN WALL FRAME**
H1: LIGHT GREY - POWDER COATED TO MATCH BM "2124-40 THUNDERCLOUD GRAY"
H2: CHARCOAL - POWDER COATED TO MATCH BM "2124-20 TROUT GRAY"
- J CURTAIN WALL SHADOW BOX**
J1: WHITE - COLOUR TO MATCH BM "2121-50 ICED CUBE SILVER"
- K CURTAIN WALL RAISED ALUMINUM PANEL**
K1: LIGHT GREY - TO MATCH 3mm ALPOLIC SOG GREY
K2: COPPER - COLOUR TO MATCH 3mm ALPOLIC MTLG DCX CPPR
- L GUARDRAIL**
L1: FASCIA MOUNT POWDER COATED FRAME & RAIL TO MATCH BM "2124-40 THUNDERCLOUD GRAY" CW VARIABLE STRIPED BLUE FRIT GLASS TO MATCH BM "2063-40 SAILOR'S SEA BLUE"
L2: FASCIA MOUNT POWDER COATED FRAME & RAIL TO MATCH BM "2124-40 THUNDERCLOUD GRAY" CW HALF-HEIGHT BACK PAINTED GLASS TO MATCH LIGHT GREY - COLOUR TO MATCH 3mm ALPOLIC SOG GREY
L3: FASCIA MOUNT POWDER COATED FRAME & RAIL TO MATCH BM "2124-40 THUNDERCLOUD GRAY" CW CLEAR GLASS
L4: TOP MOUNT POWDER COATED FRAME & RAIL TO MATCH BM "2124-40 THUNDERCLOUD GRAY" CW CLEAR GLASS
L5: INSIDE MOUNT POWDER COATED FRAME & RAIL TO MATCH BM "2124-40 THUNDERCLOUD GRAY" CW CLEAR GLASS
- M PRIVACY SCREEN**
M1: FROSTED GLASS TO MATCH BM "HC-159 PHILPSBURG BLUE" CW POWDER COATED ALUMINUM FRAME TO MATCH BM "2124-40 THUNDERCLOUD GRAY"
- N SUNSHADE**
N1: CURTAIN WALL ALUMINUM ATTACHMENT TO MATCH FRAME COLOUR CW DOTTED WHITE FRIT GLASS SUNSHADE
N2: CURTAIN WALL ALUMINUM ATTACHMENT TO MATCH FRAME COLOUR CW VARIABLE-STRIPED WHITE FRIT GLASS SUNSHADE
- P ARCHITECTURAL LOUVER**
P1: DARK GREY - COLOUR TO MATCH BM "2124-20 TROUT GRAY"
P2: CHARCOAL - COLOUR TO MATCH BM "2119-30 BABY SEAL BLACK"
- Q STEEL & GLASS CANOPIES**
Q1: STEEL CANOPY WRAPPED IN B2 MATERIAL W/ BLUE GLASS FASCIA & SOFFIT TO MATCH BM "2063-40 SAILOR'S SEA BLUE"
Q2: PAINTED STEEL CANOPY TO MATCH BM "2124-20 TROUT GRAY" CW BROWN GLASS TO MATCH BM "CC-390 RUSTY NAIL" - OVERHEAD MOUNTED VARIABLE-STRIPED FRIT & FASCIA MOUNTED BACK-PAINTED
Q3: PAINTED STEEL CANOPY TO MATCH BM "2124-40 THUNDERCLOUD GRAY" W/ CLEAR GLASS
Q4: PAINTED STEEL CANOPY TO MATCH BM "2124-20 TROUT GRAY"
- R TRELLIS**
R1: STEEL TRELLIS PAINTED TO MATCH BM "2121-50 ICED CUBE SILVER" CW VARIABLE STRIPED WHITE FRIT GLASS
R2: PAINTED STEEL TRELLIS TO MATCH BM "2121-50 ICED CUBE SILVER" CW ORANGE TINTED FROSTED GLASS TO MATCH BM "2015-20 ORANGE BURST" BLUE TINTED FROSTED GLASS TO MATCH BM "784 BLUE MAGAW" & WHITE TINTED
- S TRAFFIC COATING**
S1: LIGHT - NEOGARD "LIGHT GREY"
S2: DARK - NEOGARD "CHARCOAL"
- T STEEL DOORS/GATES**
T1: DARK GREY - COLOUR TO MATCH BM "2124-20 TROUT GRAY"
- V ARCHITECTURAL STEEL STRUCTURE**
V1: WHITE - COLOUR TO MATCH BM "2121-50 ICED CUBE SILVER"
- W SOLAR PANELS**
W1: SOLAR PANEL
- X CORRUGATED METAL**
X1: LIGHT GREY - COLOUR TO MATCH BM "2124-40 THUNDERCLOUD GRAY"
- Y MISCELLANEOUS METAL**
Y1: CHILDCARE PICKET SECURITY FENCE - REFER TO LANDSCAPE DWGS
- Z MISCELLANEOUS FEATURES**
Z1: BCGEU CORNER STONE
Z2: INDIGENOUS ART - DESIGN BY COMMISSIONED ARTIST
Z3: FEATURE ART POLES - DESIGN TO BE DETERMINED BY COMMISSIONED ARTIST AND TO BE FURTHER ELABORATED ON AT PPA STAGE
Z4: ENTRY INSCRIPTION - COLOUR TO MATCH BM "2138-70 GRAY LAKE" TEXT TO BE "LABOR OMNIA VINCI"



No.	Description	Date	Dr.
-	AMENDED DEVELOPMENT PLAN	JUL 28 2023	
-	AMENDED DEVELOPMENT PLAN	JUL 7 2023	
-	ISSUED FOR SPOD REVIEW	JUN 12 2023	
-	ISSUED FOR SPOD REVIEW	FEB 11 2022	
-	ISSUED FOR SPOD REVIEW	FEB 03 2022	
-	ISSUED FOR SPOD REVIEW	JAN 31 2022	
-	ISSUED FOR SPOD REVIEW	JAN 21 2022	
-	ISSUED FOR SPOD REVIEW	DEC 08 2021	
-	ISSUED FOR SPOD REVIEW	NOV 22 2021	
-	ISSUED FOR SPOD REVIEW	JUN 14 2021	

Revisions: Read Up



DA
DA Architects + Planners
200 - 1014 Homer Street, Vancouver
British Columbia, Canada V6B 2W9
T 604 685 6312
F 604 685 0988
www.da-architects.ca

AMENDED DEVELOPMENT PLAN - REZ20-27
6877, 6891, 6913, 6939, 6945 PALM AVENUE
BURNABY, BC

Copyright Reserved. This plan and design are, and at all times remain the exclusive property of DA Architects + Planners, and cannot be used or reproduced without the Architect's written consent.

Sheet Title
BUILDING ELEVATIONS

Job No.	20-08-000	Sheet No.	
Scale	1:200		
Drawn			
Checked			
Approved			
Date	2021.02.02	Revision	

A-332

1 WEST ELEVATION
1:200

MATERIAL & FINISH SCHEDULE

- A ARCHITECTURAL FINISHED CONCRETE**
A1: WHITE - PAINTED TO MATCH BM "2121-50 ICED CUBE SILVER"
A2: BROWN - PAINTED TO MATCH BM "CC-390 RUSTY NAIL"
A3: GREY - PAINTED TO MATCH BM "2124-40 THUNDERCLOUD GRAY"
A4: EXPOSED CONCRETE
- B ALUMINUM COMPOSITE METAL PANEL**
B1: LIGHT GREY - COLOUR TO MATCH 3mm ALPOLIC SOG GREY
B2: DARK GREY - COLOUR TO MATCH 3mm ALPOLIC CVG GREY
B3: LIGHT GREY - 30mm WIDE PANELS AT MECHANICAL ENCLOSURE - COLOUR TO MATCH 3mm ALPOLIC SOG GREY
B4: WOOD GRAIN SOFFIT - COLOUR TO MATCH PROMARK ELM GOLDEN SPICE (EGS-202)
- C STONE TILE**
C1: WHITE - COLOUR TO MATCH XTONE GLEM WHITE NATURE
- D CEMENTITIOUS PANEL**
(D1, D2, D3 COLOURS ARE USED IN A PATTERN)
D1: WHITE - COLOUR TO MATCH EQUITONE TECTIVA TE00
D2: TAN - COLOUR TO MATCH EQUITONE TECTIVA TE60
D3: GREY - COLOUR TO MATCH EQUITONE TECTIVA TE20
- E WINDOW GLAZING**
E1: CLEAR LOW-E GLASS
E2: FROSTED GLASS
- F SPANDREL GLASS**
F1: LIGHT BLUE - COLOUR TO MATCH BM "HC-159 PHILPSBURG BLUE"
F2: BLUE - COLOUR TO MATCH BM "2063-40 SAILOR'S SEA BLUE"
- G WINDOW WALL FRAME**
G1: LIGHT GREY - POWDER COATED TO MATCH BM "2124-40 THUNDERCLOUD GRAY"
- H CURTAIN WALL FRAME**
H1: LIGHT GREY - POWDER COATED TO MATCH BM "2124-40 THUNDERCLOUD GRAY"
H2: CHARCOAL - POWDER COATED TO MATCH BM "2124-20 TROUT GRAY"
- J CURTAIN WALL SHADOW BOX**
J1: WHITE - COLOUR TO MATCH BM "2121-50 ICED CUBE SILVER"
- K CURTAIN WALL RAISED ALUMINUM PANEL**
K1: LIGHT GREY - TO MATCH 3mm ALPOLIC SOG GREY
K2: COPPER - COLOUR TO MATCH 3mm ALPOLIC MTLG DXX CPPR
- L GUARDRAIL**
L1: FASCIA MOUNT POWDER COATED FRAME & RAIL TO MATCH BM "2124-40 THUNDERCLOUD GRAY" CW VARIABLE STRIPED BLUE FRIT GLASS TO MATCH BM "2063-40 SAILOR'S SEA BLUE"
L2: FASCIA MOUNT POWDER COATED FRAME & RAIL TO MATCH BM "2124-40 THUNDERCLOUD GRAY" CW HALF-HEIGHT BACK PAINTED GLASS TO MATCH LIGHT GREY - COLOUR TO MATCH 3mm ALPOLIC SOG GREY
L3: FASCIA MOUNT POWDER COATED FRAME & RAIL TO MATCH BM "2124-40 THUNDERCLOUD GRAY" CW CLEAR GLASS
L4: TOP MOUNT POWDER COATED FRAME & RAIL TO MATCH BM "2124-40 THUNDERCLOUD GRAY" CW CLEAR GLASS
L5: INSIDE MOUNT POWDER COATED FRAME & RAIL TO MATCH BM "2124-40 THUNDERCLOUD GRAY" CW CLEAR GLASS
- M PRIVACY SCREEN**
M1: FROSTED GLASS TO MATCH BM "HC-159 PHILPSBURG BLUE" CW POWDER COATED ALUMINUM FRAME TO MATCH BM "2124-40 THUNDERCLOUD GRAY"
- N SUNSHADE**
N1: CURTAIN WALL ALUMINUM ATTACHMENT TO MATCH FRAME COLOUR CW DOTTED WHITE FRIT GLASS SUNSHADE
N2: CURTAIN WALL ALUMINUM ATTACHMENT TO MATCH FRAME COLOUR CW VARIABLE-STRIPED WHITE FRIT GLASS SUNSHADE
- P ARCHITECTURAL LOUVER**
P1: DARK GREY - COLOUR TO MATCH BM "2124-20 TROUT GRAY"
P2: CHARCOAL - COLOUR TO MATCH BM "2119-30 BABY SEAL BLACK"
- Q STEEL & GLASS CANOPIES**
Q1: STEEL CANOPY WRAPPED IN B2 MATERIAL W/ BLUE GLASS FASCIA & SOFFIT TO MATCH BM "2063-40 SAILOR'S SEA BLUE"
Q2: PAINTED STEEL CANOPY TO MATCH BM "2124-20 TROUT GRAY" CW BROWN GLASS TO MATCH BM "CC-390 RUSTY NAIL" - OVERHEAD MOUNTED VARIABLE-STRIPED FRIT & FASCIA MOUNTED BACK-PAINTED
Q3: PAINTED STEEL CANOPY TO MATCH BM "2124-40 THUNDERCLOUD GRAY" W/ CLEAR GLASS
Q4: PAINTED STEEL CANOPY TO MATCH BM "2124-20 TROUT GRAY"
- R TRELLIS**
R1: STEEL TRELLIS PAINTED TO MATCH BM "2121-50 ICED CUBE SILVER" CW VARIABLE STRIPED WHITE FRIT GLASS
R2: PAINTED STEEL TRELLIS TO MATCH BM "2121-50 ICED CUBE SILVER" CW ORANGE TINTED FROSTED GLASS TO MATCH BM "2015-20 ORANGE BURST" BLUE TINTED FROSTED GLASS TO MATCH BM "784 BLUE MAGAW" & WHITE TINTED FROSTED GLASS
- S TRAFFIC COATING**
S1: LIGHT - NEOGARD "LIGHT GREY"
S2: DARK - NEOGARD "CHARCOAL"
- T STEEL DOORS/GATES**
T1: DARK GREY - COLOUR TO MATCH BM "2124-20 TROUT GRAY"
- V ARCHITECTURAL STEEL STRUCTURE**
V1: WHITE - COLOUR TO MATCH BM "2121-50 ICED CUBE SILVER"
- W SOLAR PANELS**
W1: SOLAR PANEL
- X CORRUGATED METAL**
X1: LIGHT GREY - COLOUR TO MATCH BM "2124-40 THUNDERCLOUD GRAY"
- Y MISCELLANEOUS METAL**
Y1: CHLD/CARE PICKET SECURITY FENCE - REFER TO LANDSCAPE DWGS
- Z MISCELLANEOUS FEATURES**
Z1: BCGEU CORNER STONE
Z2: INDIGENOUS ART - DESIGN BY COMMISSIONED ARTIST
Z3: FEATURE ART POLES - DESIGN TO BE DETERMINED BY COMMISSIONED ARTIST AND TO BE FURTHER ELABORATED ON AT PPA STAGE
Z4: ENTRY INSCRIPTION - COLOUR TO MATCH BM "2138-70 GRAY LAKE" TEXT TO BE "LABOR OMNIA VINCIT"