

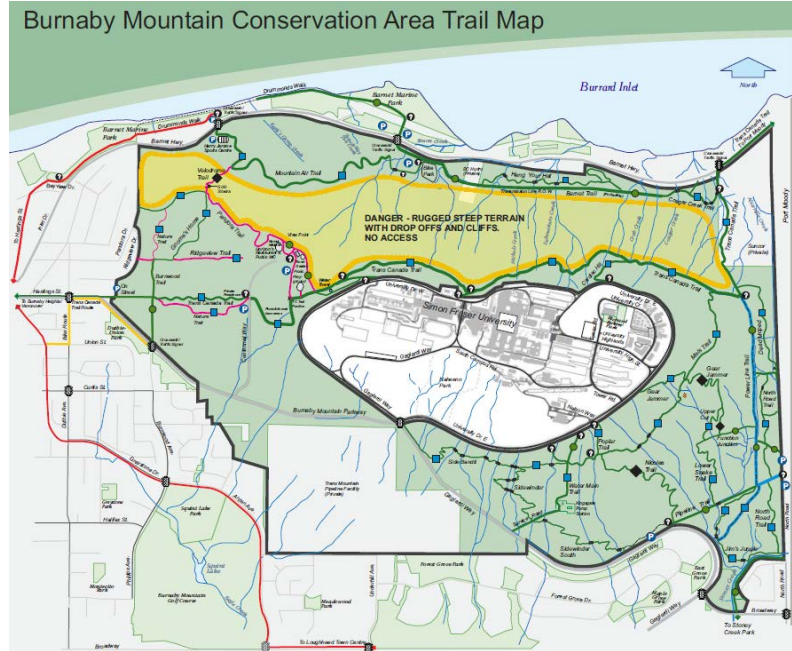
# Burnaby Mountain Trail Management Plan

**Council Update**  
**April 29, 2024**



# Agenda

- Project Purpose/Overview
- Timeline
- Key Findings Highlights
- Community Engagement Plan
- Next Steps

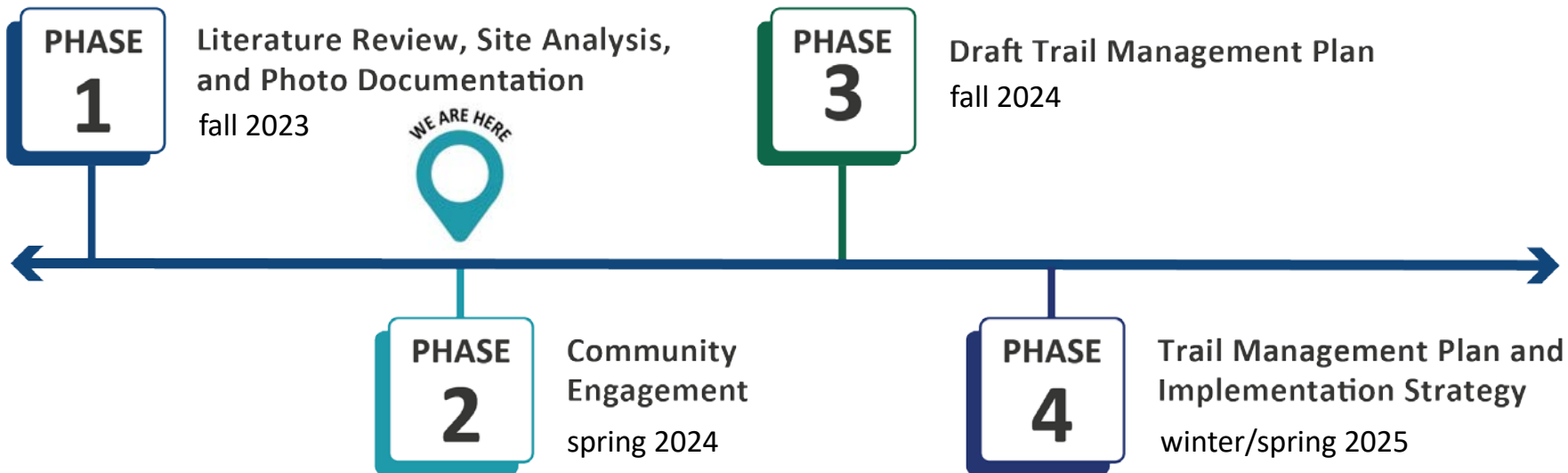


# Purpose/Overview

- Burnaby Mountain is a popular **578-hectare municipal park**, with a **30 km trail network** that is continually evolving;
- The Park has a **conservation covenant to protect this environmentally sensitive area** and ecosystem;
- The **Trail Management Plan** aims to **balance both the sustainable conservation of the lands for its protection, and recreation pleasures and needs of a growing City.**



# Timeline



# Early Analysis Findings

- ✓ Need for infrastructure improvements: bridges, boardwalks, signage, application of trail standards;
- ✓ Environment management: invasives, impacts on soil, water, wildlife and other values caused by trail use;
- ✓ Need for public outreach, education and ongoing community engagement;
- ✓ Need for regular inspections;
- ✓ Need for achievable Trail Management Plan.



## Trail Condition Ratings

Trail Name	Length (m)		Condition Rating
Barnet Trail/Cougar Creek	1,900	▲	2
Cardiac Hill	380	■	3
Gnome's Home Trail	550	■	3
Lower Snake Trail	475	▼	4
Jim's Jungle	900	▼	4
Mel's Trail	1,900	▼	4
Mountain Air Trail	1,300	■	3
Nicoles	1,000	▼	4
North Road Trail	1,200	▼	5
Pandora Trail	900	■	3
Pipeline Trail	740	▲	2
Powerline Trail	750	▲	2
Ridgeview Trail	800	■	3
Sidebandit	700	■	3
Sidewinder & Lower Sidewinder	2,100	▼	4
Trans-Canada Trail	5,500	▲	2
Upper Cut	450	▼	4
Upper - Lower Gear Jammer	450	▼	4
Velodrome Trail	500	▼	4
Burnwood Access	675	■	3
Watermelon Trail	520	▲	2
Poplar Trail	250	■	3

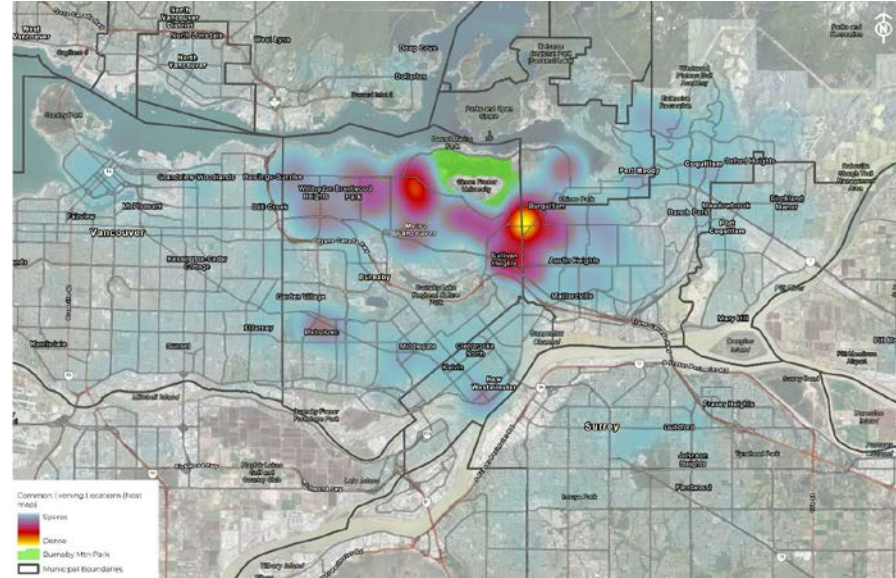
CONDITION GRADING	DESCRIPTION OF CONDITION
1	Very Good: only planned maintenance required
2	Good: minor maintenance required plus planned maintenance
3	Fair: significant maintenance required
4	Poor: Significant renewal/rehabilitation required
5	Very Poor: physically unsound and/or beyond rehabilitation



# Early Analysis Findings

## Current Users

- Over 1 million park users annually;
- Local Focus:
  - ✓ 96% of visitors are from Metro Vancouver;
  - ✓ 50% of visitors are from Burnaby;
  - ✓ 23% of visitors are residents of SFU or UniverCity.



Heat map visualizing common park visitor origins based on mobility data analysis in 2023 (all minus SFU/UniverCity).

# Map- Environmental Trails Assessment



## Legend

Burnaby Mountain Conservation Area

Parcels

Railway

Waterway

Trails of Environmental Concern

High

Medium

Low

Other

# Community Engagement Plan

- ✓ PRC Committee & Council Check-in (April)
- ✓ Online Public Survey (May 1- June 2, 2024)
- ✓ Outreach (Social media, Posters, Postcards)
- ✓ Open House (May 21, 2024 at SFU)
- ✓ Interviews/Roundtable Discussions
- ✓ First Nations Engagement
- ✓ Project Webpage: <https://burnaby.ca/BurnabyMountainTrails>





# Next Steps



- ✓ Community Engagement (Spring – Summer '24)
- ✓ Draft Trail Management Plan (Fall 2024)

