

Burnaby Outdoor Aquatics Strategy Update

Parks, Recreation & Culture
Committee
June 11, 2024



Agenda

Project Background

Current State

Accessibility

Survey Results

Focus Groups/Community Consultation

Inter-Municipal Consultation

Discussion & Feedback

Project Background

Project is here



Kickoff April 2023



Phase 1:
Key Findings



Phase 2:
Visioning

Consultation &
Engagement

Draft July 2024



Phase 3:
Drafting

Sep 2024



Phase 4:
Confirming

Second
Consultations

Final draft Nov 2024



Phase 5:
Implementing

2025 begin 25-year
implementation plan

Current State: Outdoor Aquatic Services & Facilities

Background



4 outdoor pools

Fun Facts:

The outdoor pools are home to 6 swim clubs.



10 spray parks

Wesburn Park is the newest spray park and opened in 2023.



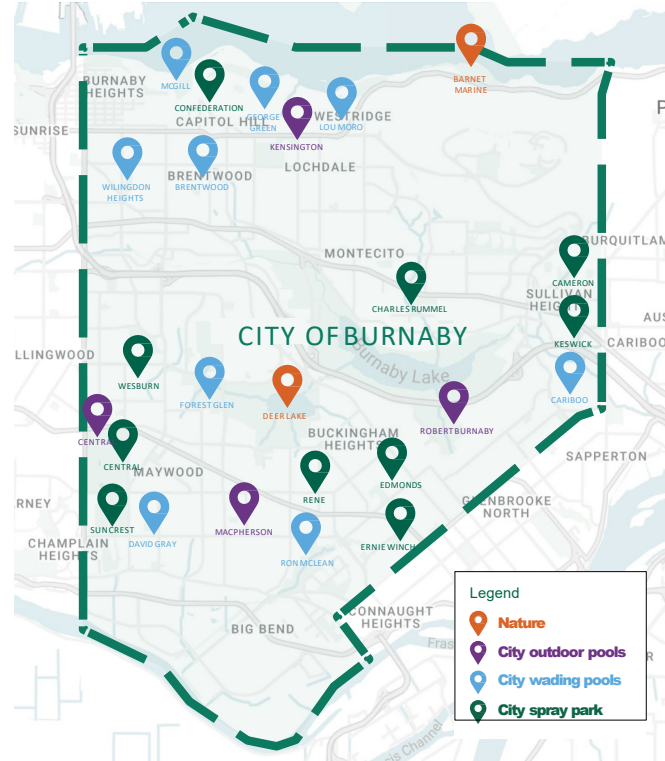
9 wading pools

All nine wading pools were built in 1965.



2 natural areas

Prior to the 1980's Deer Lake was a natural swimming area.



Current State: Infrastructure Conditions

	Central Park	McPherson	Kensington	Robert Burnaby
Year Built	1963	1965	1963	1963
% Systems end of life	74%	59%	65%	56%
Required Funding over next 5 years	\$5 M	\$3.1 M	\$3.25 M	\$2.8 M

All outdoor facilities in need of accessibility & sustainability upgrades

Current State: Summary by Aquatic Service

Activity	2015	2019	2022	Avg %
Recreation (fun)	67,927	46,228	57,287	53%
Sport Training (club rentals)	29,271	39,273	22,755	28%
Skill development (lessons)	12,184	10,067	25,580	15%
Fitness (laps and programs)	4,404	1,547	5,363	3%
Special Events (e.g. meets)	1018	84	1307	1%
Rehabilitation and Therapy	0	0	0	0
Leadership Training	0	0	0	0
Total of All Swims	114,804	97,199	112,292	

Public Survey: What We Heard

- Outdoor pools most popular amenities, followed by Barnet Marine Park, spray parks and wading pools in order of popularity
- Desire for facilities like Aldergrove Outdoor Experience & New Brighton Pool
- Desire for extended hours and season for outdoor pools and timing of program availability (laps during all operating hours)

7% do not use outdoor pools

64% drive to facilities

37% identify as visible minorities

34% noted hours as limiting

24% prefer indoor amenities

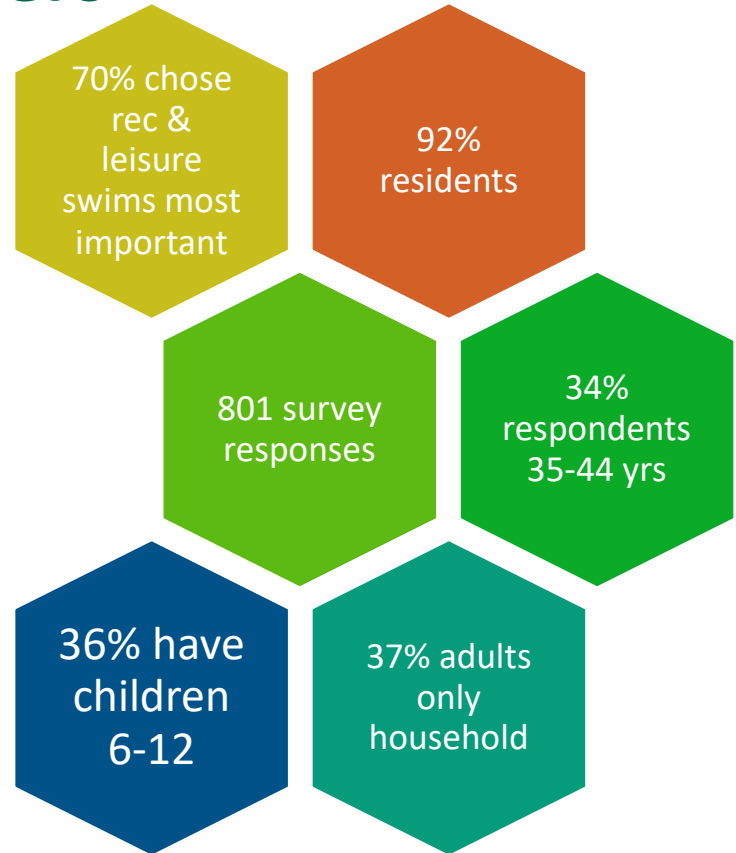
77% primarily use for cooling off

Survey available on Your Voice Platform September 2023

Public Survey: By the Numbers

Additional Consultations

- 3 public open houses
- 2 public focus groups
- Youth focus group
- Key partner and user engagement
- Staff focus group



Focus Groups: What We Heard

- Aquatic amenities are beloved, but could be better promoted
- Desire to increase and enhance programs for youth (12-16) and expand unique programs (yoga, SUP, wellness, relaxation etc.)
- Important cooling off amenities during extreme heat, but need to use water responsibly
- Distribute programming across amenities
- Improve accessibility
- Need for change rooms at spray parks & different elements to serve broader age groups
- Clean, modern facilities encourage greater use
- Keep costs low
- Swim clubs desire to stay within Burnaby vs. travelling to other cities


Municipal Scan: Regional Overview

- Many pools reaching end of life
- Wading pools phasing out in favour of spray parks
- Existing facilities lack accessibility and do not meet sustainability standards
- Some reducing pool inventory in response to changing trends
- Innovative solutions using "wet zones" in park design, rather than "pool" or "spray park"
- Inclusive programming and design (accessibility, LGBTQ2IA+ gaining importance)
- Users travel to amenities based on location and proximity to transit, consider cross boundary movement in planning new/upgraded facilities

Municipal Scan: Future Trends

- Ideas like Ninja Cross or slides to attract young people & make water activities less intimidating
- Focus on integrating indoor and outdoor experiences (e.g. Aldergrove)
- Impacts from climate change and importance of implementing sustainable management practices while recognizing aquatic infrastructure as important cooling-off amenities


Discussion & Feedback



Accessibility &
Inclusion



Extreme
Weather
Patterns



Destination
all season
facilities

Next Steps



Key Findings & Visioning
Draft Report to Council