



1 PPA ENLARGED SOUTH ELEVATION
A2.05, SCALE: 1/8" = 1'-0"



2 PPA ENLARGED NORTH ELEVATION
A2.05, SCALE: 1/8" = 1'-0"

Exterior Material Legend	
Key Value	Keynote Text
AL01	WHITE PANEL INTEGRATED INTO WINDOW WALL SYSTEM - WHITE
AL02	METAL PANEL - WHITE
BR01	GRAY ALUMINUM GUARDRAIL WITH CLEAR AND FRITTED GLASS - TOP MOUNT
BR02	GRAY ALUMINUM GUARDRAIL WITH CLEAR GLASS - TOP MOUNT
BR03	ALUMINUM PICKET GUARDRAIL
BR04	GRAY ALUMINUM GUARDRAIL WITH CLEAR GLASS - TOP MOUNT
CP01	ALUMINUM CANOPY - GRAY
GL01	LOW E GLAZING - GRAY
GL02	LOW E GLAZING - CLEAR GLASS
HB01	COMPOSITE PANEL - GRAY
HB02	COMPOSITE PANEL - WHITE
LV01	ALUMINUM LOUVER - GRAY
MG	METAL GATE
ML	MULLIONS - GRAY
PC01	PAINTED CONCRETE - WHITE
PS	PRIVACY SCREEN
SN	SIGNAGE TBD
SP01	SPANDREL GLASS - GRAY

CLIENT

OpenForm

PROPERTIES

Suite 1000 - 850 West Hastings Street
Vancouver, BC V6C 1E1

COPYRIGHT

This drawing has been prepared solely for the intended use, thus any reproduction or distribution for any purpose other than authorized by Arcadis is forbidden. Written dimensions shall have precedence over scaled dimensions. Contractors shall verify and be responsible for all dimensions and conditions on the job, and Arcadis shall be informed of any variations from the dimensions and conditions shown on the drawing. Shop drawings shall be submitted to Arcadis for general conformance before proceeding with fabrication.

Arcadis Architects (Canada) Inc.
formerly B&B Group Architects (Canada) Inc.

ISSUES

No.	DESCRIPTION	DATE
1	ISSUED FOR PPA	2022-09-23
2	90% BP DRAWINGS	2022-11-07
3	90% BP DRAWINGS	2023-03-23
4	BP	2023-08-11
5	RE-ISSUED FOR PPA	2023-09-20
6	RE-ISSUED FOR PPA	2024-07-19

CONSULTANTS

SEAL

PRIME CONSULTANT

ARCADIS

1285 West Pender Street - Suite 100
Vancouver BC V6E 4B1 Canada
tel: 604-683-5757
www.arcadis.com

PROJECT

TROFEO (Formerly KHR)
6978 & 6988 Kingsway,
7211 & 7283 Greenford Avenue
Burnaby, BC

PROJECT NO:
118120

DRAWN BY:
LY

MS

PROJECT MGR:
CP

CHECKED BY:

APPROVED BY:

CP

SHEET TITLE

ENLARGED NORTH&SOUTH ELEVATION

SHEET NUMBER

A2.05.

ISSUE

6

2024-07-19 12:29:44 PM



Exterior Material Legend	
Key Value	Keynote Text
AL01	WHITE PANEL INTEGRATED INTO WINDOW WALL SYSTEM - WHITE
AL02	METAL PANEL - WHITE
BR01	GRAY ALUMINUM GUARDRAIL WITH CLEAR AND FRITTED GLASS - TOP MOUNT
BR02	GRAY ALUMINUM GUARDRAIL WITH CLEAR GLASS - TOP MOUNT
BR03	ALUMINUM PICKET GUARDRAIL
BR04	GRAY ALUMINUM GUARDRAIL WITH CLEAR GLASS - TOP MOUNT
CP01	ALUMINUM CANOPY - GRAY
GL01	LOW E GLAZING - GRAY
GL02	LOW E GLAZING - CLEAR GLASS
HB01	COMPOSITE PANEL - GRAY
HB02	COMPOSITE PANEL - WHITE
LV01	ALUMINUM LOUVER - GRAY
MG	METAL GATE
ML	MULLIONS - GRAY
PC01	PAINTED CONCRETE - WHITE
PS	PRIVACY SCREEN
SN	SIGNAGE TBD
SP01	SPANDREL GLASS - GRAY

CLIENT

OpenForm

PROPERTIES

Suite 1000 - 850 West Hastings Street
Vancouver, BC V6C 1E1

COPYRIGHT

This drawing has been prepared solely for the intended use, thus any reproduction or distribution for any purpose other than authorized by Arcadis is forbidden. Written dimensions shall have precedence over scaled dimensions. Contractors shall verify and be responsible for all dimensions and conditions on the job, and Arcadis shall be informed of any variations from the dimensions and conditions shown on the drawing. Shop drawings shall be submitted to Arcadis for general conformance before proceeding with fabrication.

Arcadis Architects (Canada) Inc.
formerly G3 Group Architects (Canada) Inc.

ISSUES

No.	DESCRIPTION	DATE
1	ISSUED FOR PPA	2022-09-23
2	60% BP DRAWINGS	2022-11-07
3	90% BP DRAWINGS	2023-03-23
4	BP	2023-08-11
5	RE-ISSUED FOR PPA	2023-09-20
6	RE-ISSUED FOR PPA	2024-07-19

CONSULTANTS

PRIME CONSULTANT

ARCADIS

1285 West Pender Street - Suite 100
Vancouver BC V6E 4B1 Canada
tel 604 683 9757
www.arcadis.com

PROJECT

TROFEO (Formerly KHR)
6978 & 6988 Kingsway,
7211 & 7283 Greenford Avenue
Burnaby, BC

PROJECT NO:
118120

DRAWN BY:
MS

PROJECT MGR:
CP

CHECKED BY:
LY

APPROVED BY:
CP

SHEET TITLE

MATERIAL COLORS

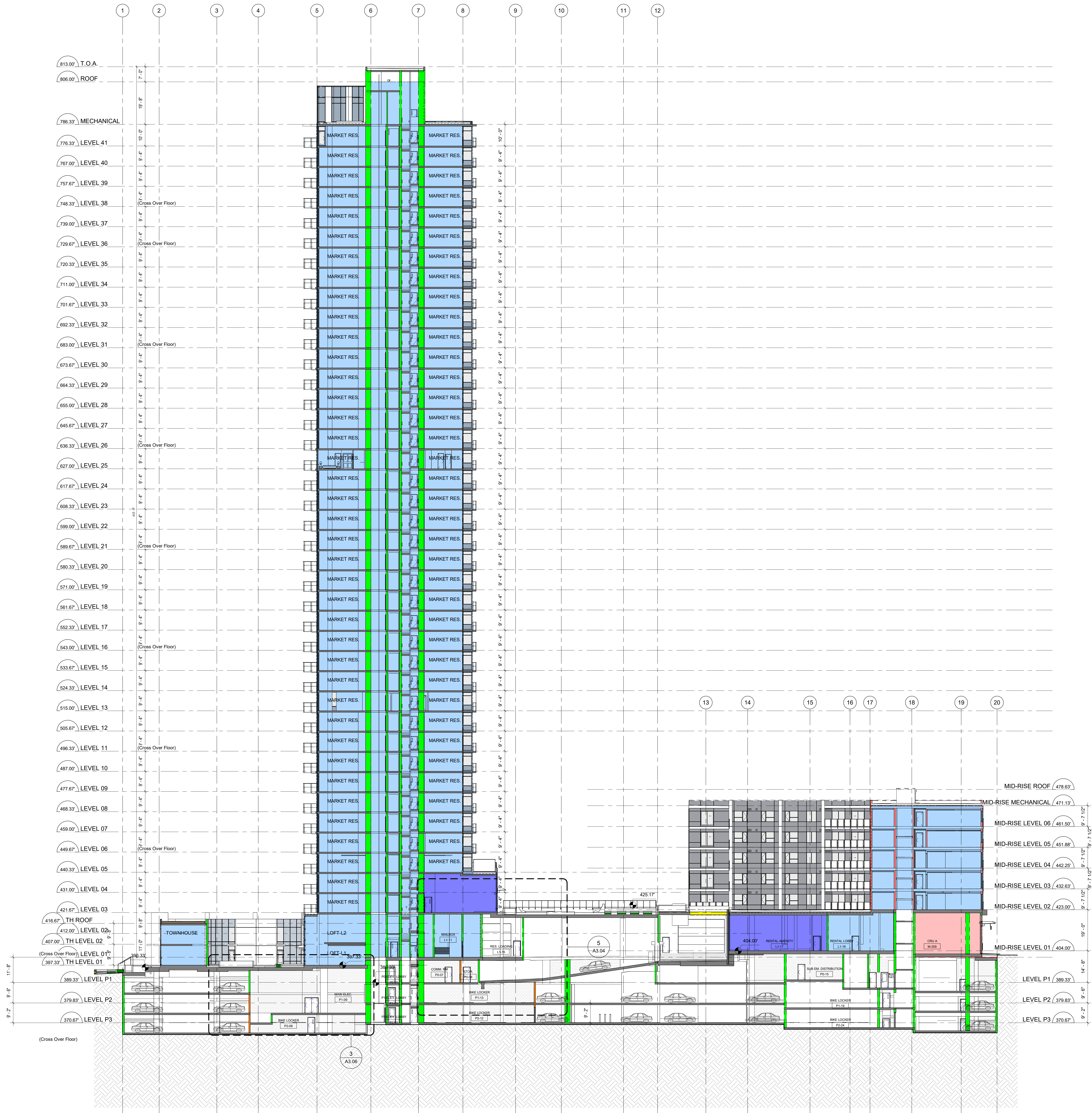
SHEET NUMBER

A2.06.

ISSUE

6

Arcadis - Docs\118120\Kingsway - Trofeo - Issues 2022\118120\A2.06.A-2024.rvt
1 of 1



1 PPA BUILDING SECTION OVERALL-NS
A3.01 SCALE: 1/16" = 1'-0"

TOWER LEVEL CHANGES	
PPA SET	PPA 2024-05-15
P4	REMOVED
P3	P3
P2	P2
P1	P1
P0	REMOVED
L1	L1
L2	L2
L3	L3
L4	L4
L5 - L41	L5 - L41
MECH.	MECH.
ROOF	ROOF

NOTE: ALL MEZZANINE LEVELS HAVE BEEN RENAMED PER BUILDING CODE REQUIREMENT

CLIENT

OpenForm

PROPERTIES

Suite 1000 - 850 West Hastings Street
Vancouver, BC V6C 1E1

COPYRIGHT

This drawing has been prepared solely for the intended use, thus any reproduction or distribution for any purpose other than authorized by Arcadis is forbidden. Written dimensions shall have precedence over scaled dimensions. Contractors shall verify and be responsible for all dimensions and conditions on the job, and Arcadis shall be informed of any variations from the dimensions and conditions shown on the drawing. Shop drawings shall be submitted to Arcadis for general conformance before proceeding with fabrication.

Arcadis Architects (Canada) Inc.
formerly 88 Group Architects (Canada) Inc.

ISSUES

No.	DESCRIPTION	DATE
1	ISSUED FOR PPA	2022-09-23
2	90% BP DRAWINGS	2022-11-07
3	90% BP DRAWINGS	2023-03-23
4	BP	2023-08-11
5	RE-ISSUED FOR PPA	2023-09-20
6	RE-ISSUED FOR PPA	2024-07-19

CONSULTANTS

SEAL

PRIME CONSULTANT

ARCADIS

1285 West Pender Street - Suite 100
Vancouver BC V6E 4B1 Canada
tel 604 683 9727
www.arcadis.com

PROJECT

TROFEO (Formerly KHR)
6978 & 6988 Kingsway,
7211 & 7283 Greenford Avenue
Burnaby, BC

PROJECT NO:
118120

DRAWN BY:
Author

PROJECT MGR:
Designer

CHECKED BY:
Checker

APPROVED BY:
Approver

SHEET TITLE

OVERALL SECTION - NORTH
SOUTH

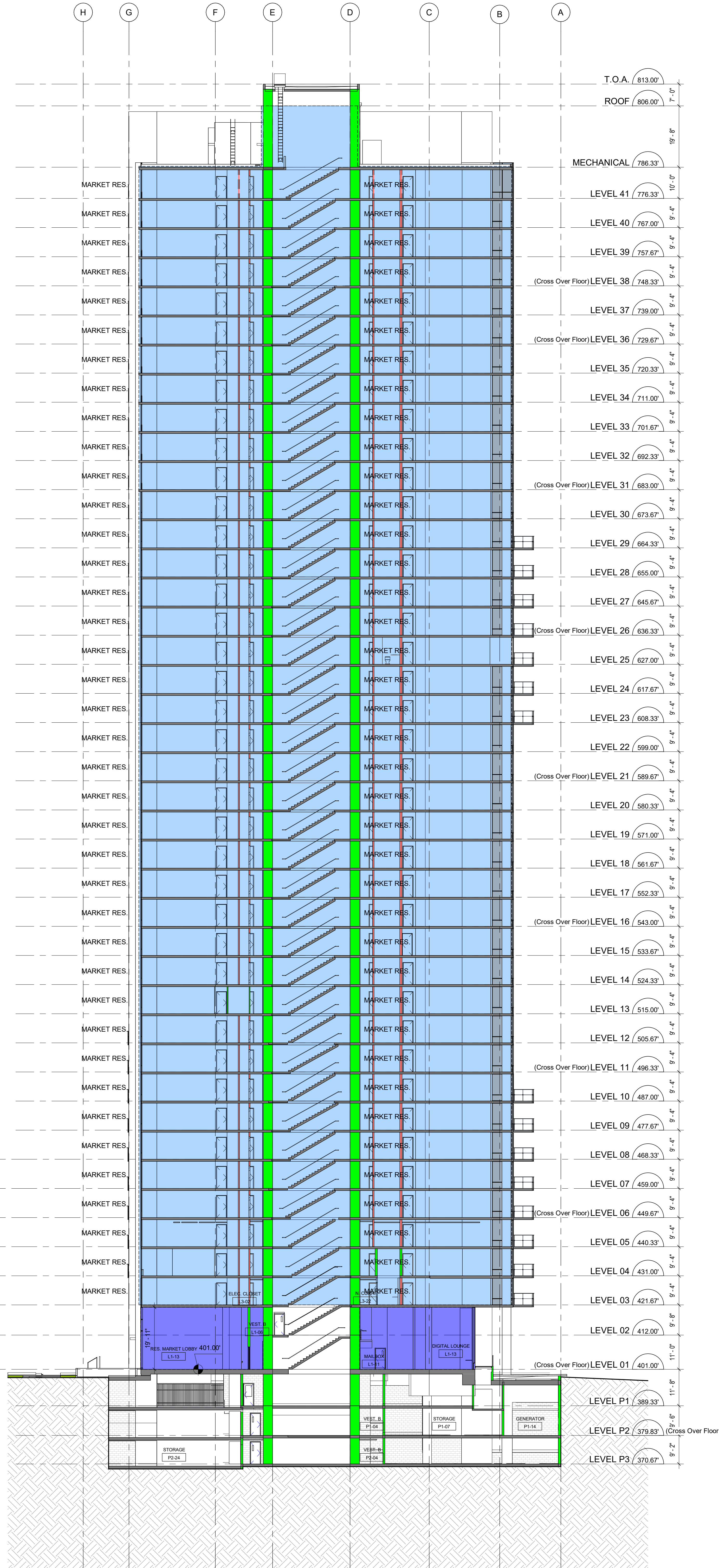
SHEET NUMBER

A3.01.

ISSUE

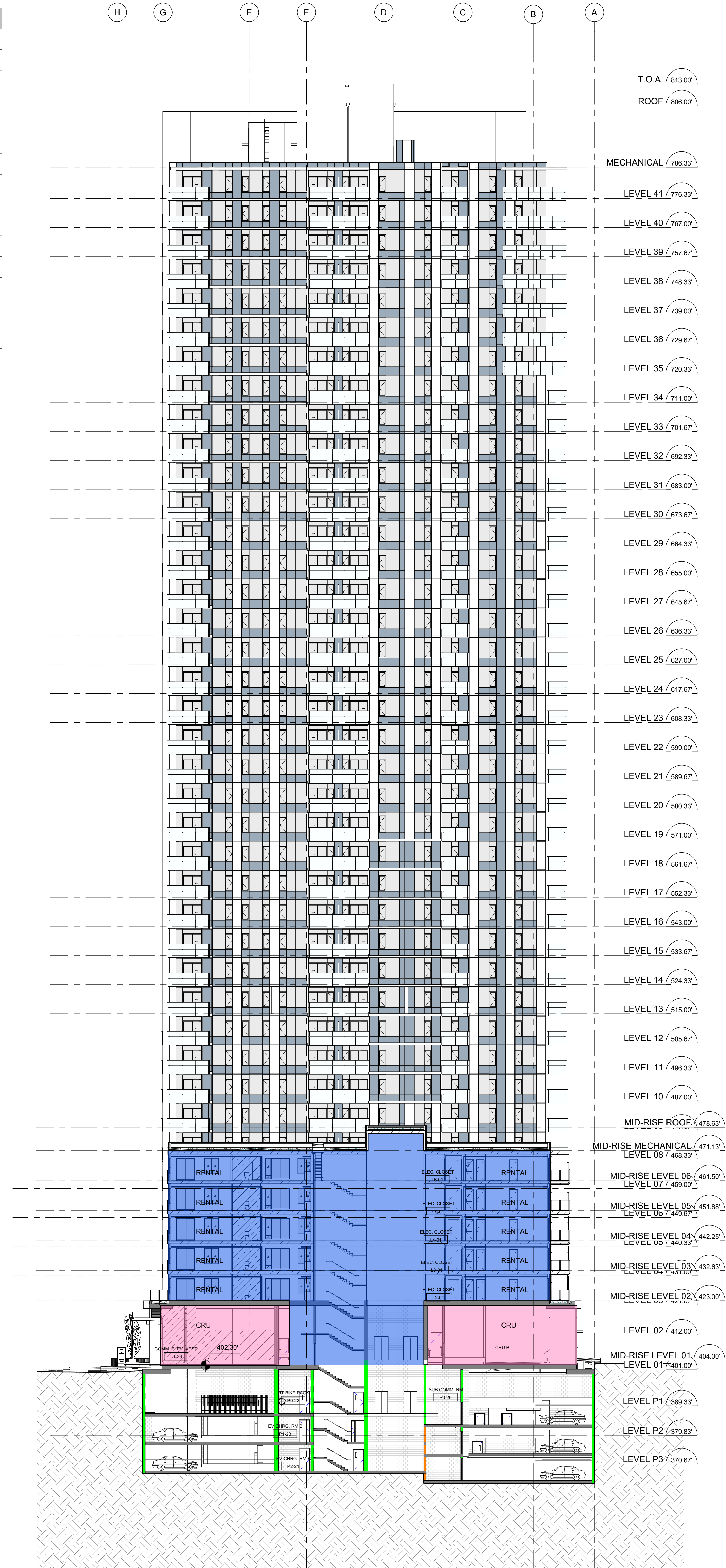
6

2024-07-19 12:21:22 PM



TOWER LEVEL CHANGES	
PPA SET	PPA 2024-05-15
P4	REMOVED
P3	P3
P2	P2
P1	P1
P0	REMOVED
L1	L1
L2	L2
L3	L3
L4	L4
L5 - L41	L5 - L41
MECH.	MECH.
ROOF	ROOF

NOTE: ALL MEZZANINE LEVELS HAVE BEEN RENAMED PER BUILDING CODE REQUIREMENT



CLIENT

OpenForm

PROPERTIES

Suite 1000 - 850 West Hastings Street
Vancouver, BC V6C 1E1

COPYRIGHT

This drawing has been prepared solely for the intended use, thus any reproduction or distribution for any purpose other than authorized by Arcadis is forbidden. Written dimensions shall have precedence over scaled dimensions. Contractors shall verify and be responsible for all dimensions and conditions on the job, and Arcadis shall be informed of any variations from the dimensions and conditions shown on the drawing. Shop drawings shall be submitted to Arcadis for general conformance before proceeding with fabrication.

Arcadis Architects (Canada) Inc.
formerly B3 Group Architects (Canada) Inc.

ISSUES

No.	DESCRIPTION	DATE
1	ISSUED FOR PPA	2022-09-20
2	90% BP DRAWINGS	2022-11-07
3	90% BP DRAWINGS	2023-03-23
4	BP	2023-08-11
5	RE-ISSUED FOR PPA	2023-09-20
6	RE-ISSUED FOR PPA	2024-07-19

CONSULTANTS

PRIME CONSULTANT

ARCADIS

1285 West Pender Street - Suite 100
Vancouver BC V6E 4B1 Canada
tel 604 683 5727
www.arcadis.com

PROJECT

TROFEO (Formerly KHR)
6978 & 6988 Kingsway,
7211 & 7283 Greenford Avenue
Burnaby, BC

PROJECT NO:

118120

DRAWN BY:

Author

CHECKED BY:

Checker

PROJECT MGR:

Designer

APPROVED BY:

Approver

SHEET TITLE

OVERALL SECTION - EAST
WEST

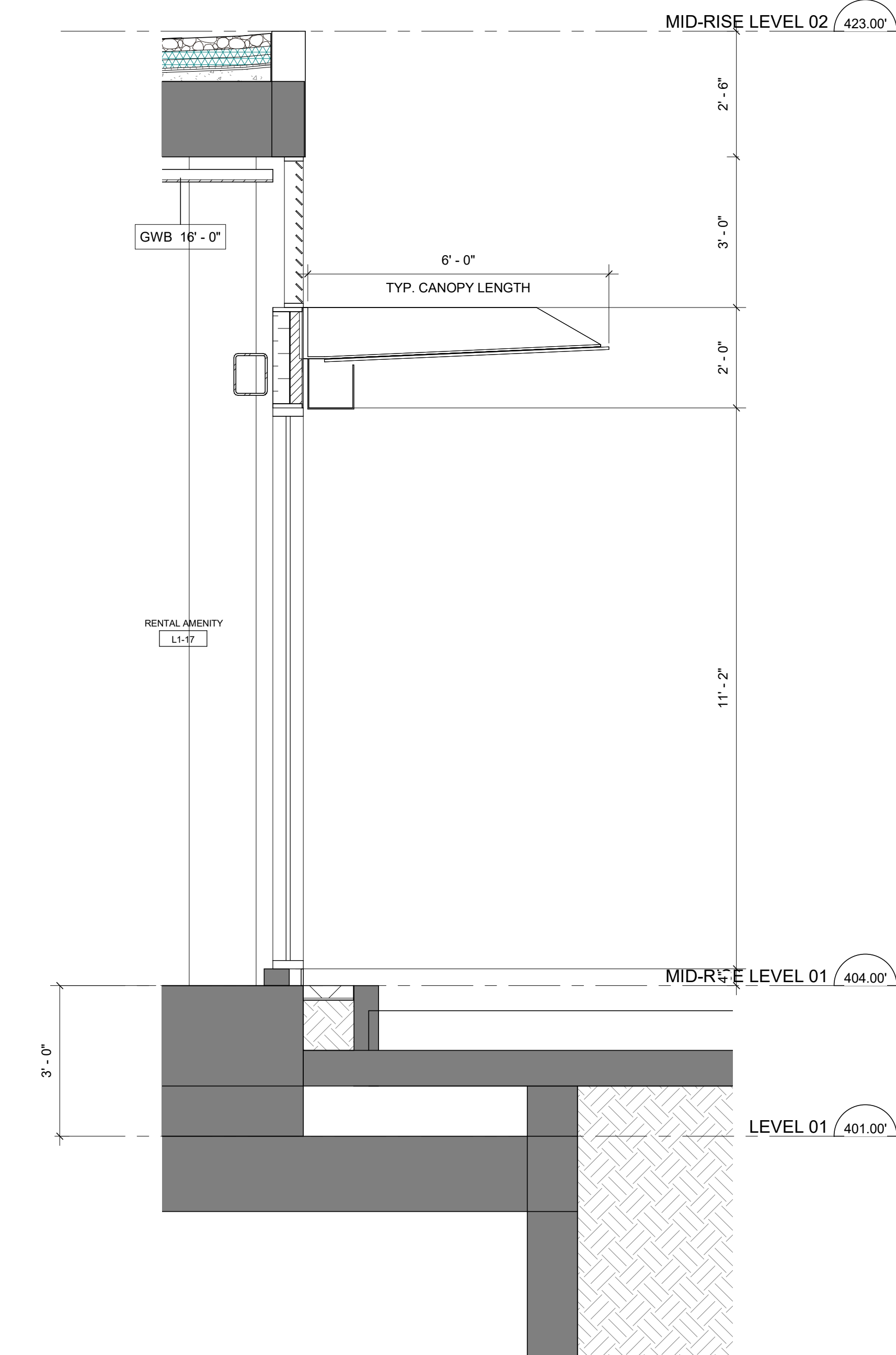
SHEET NUMBER

A3.02.

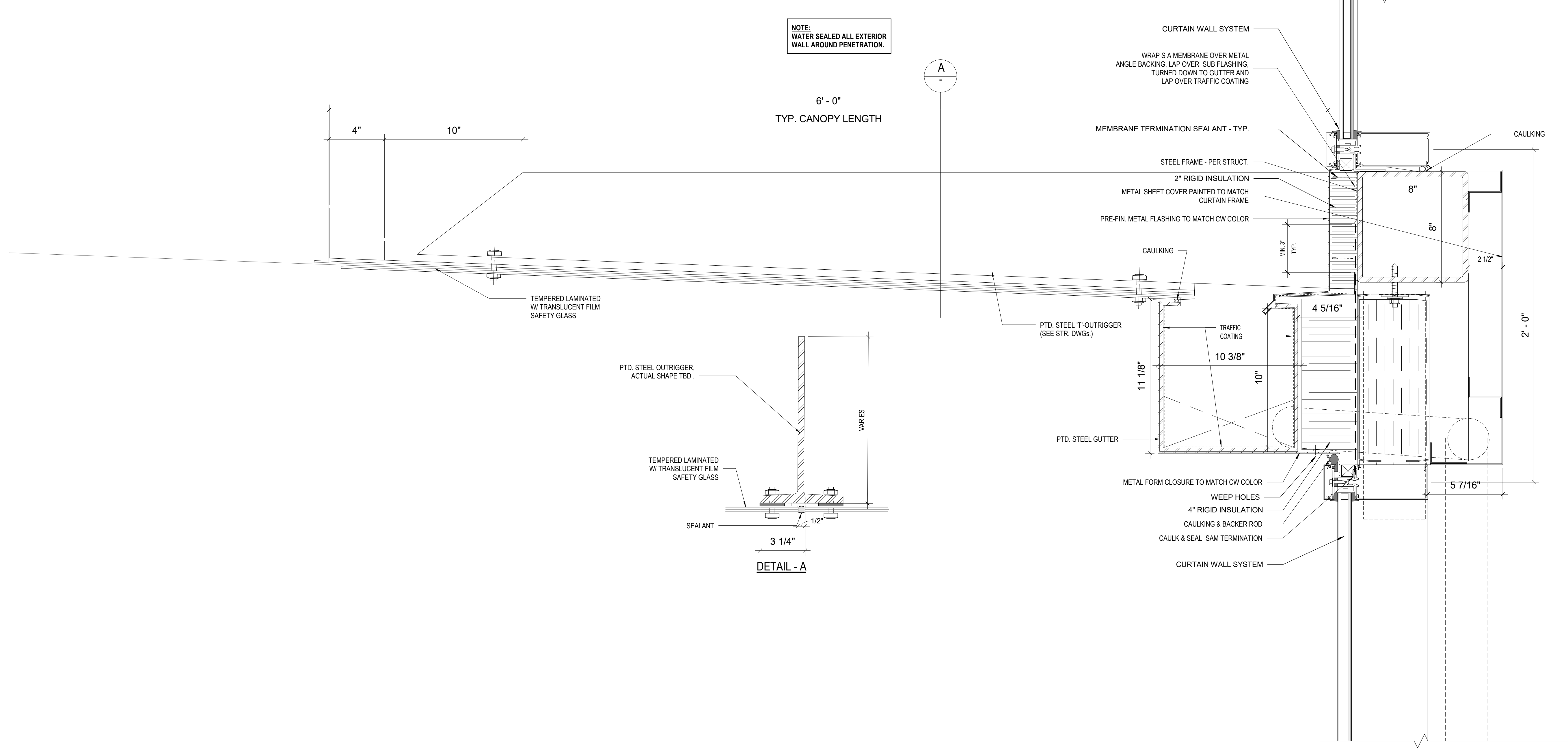
ISSUE

6

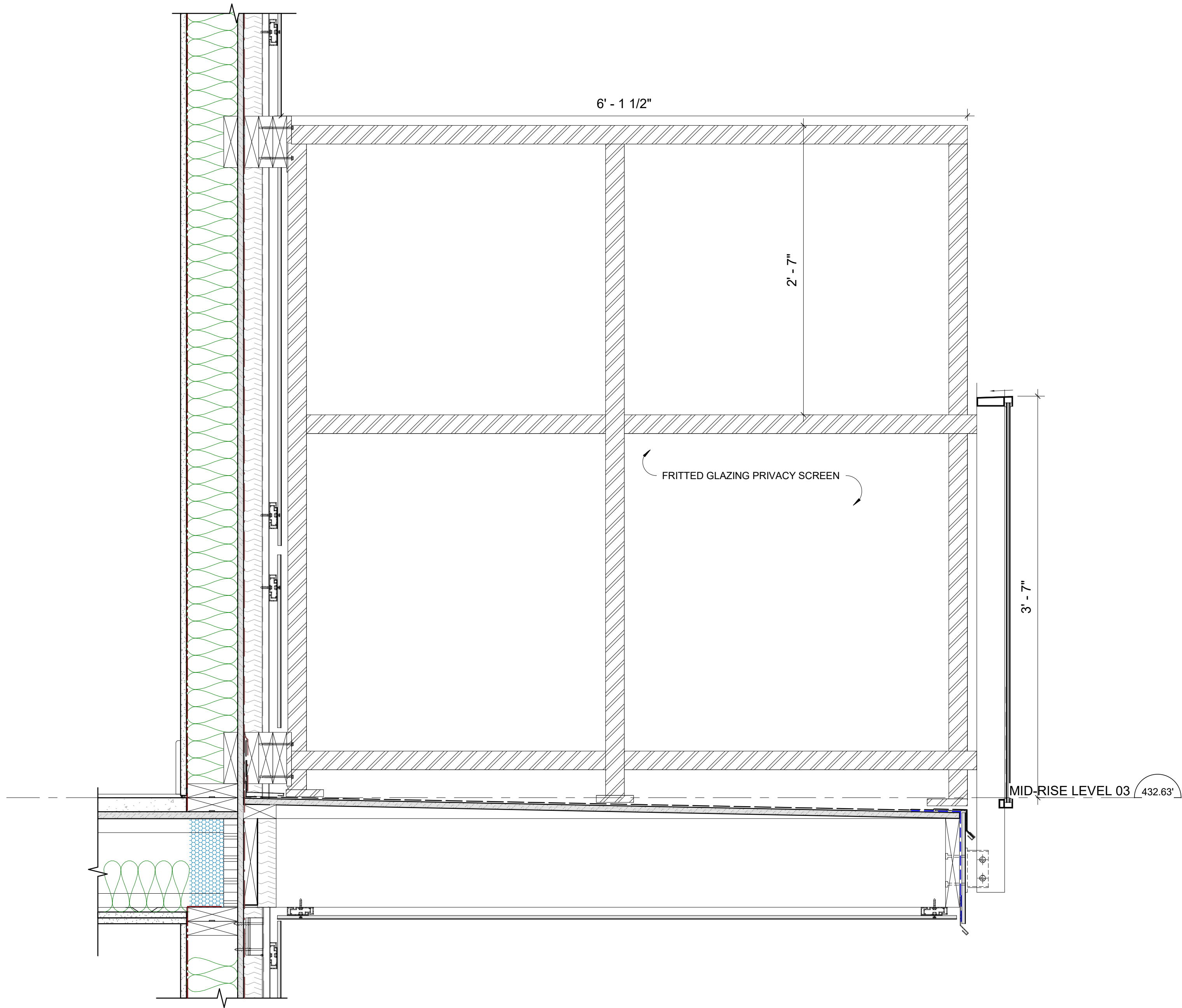
\\nas001\proj\118120\Kingsway_Midrise_Renov\2022\118120-PA03-A3.02-1.dwg
1/1



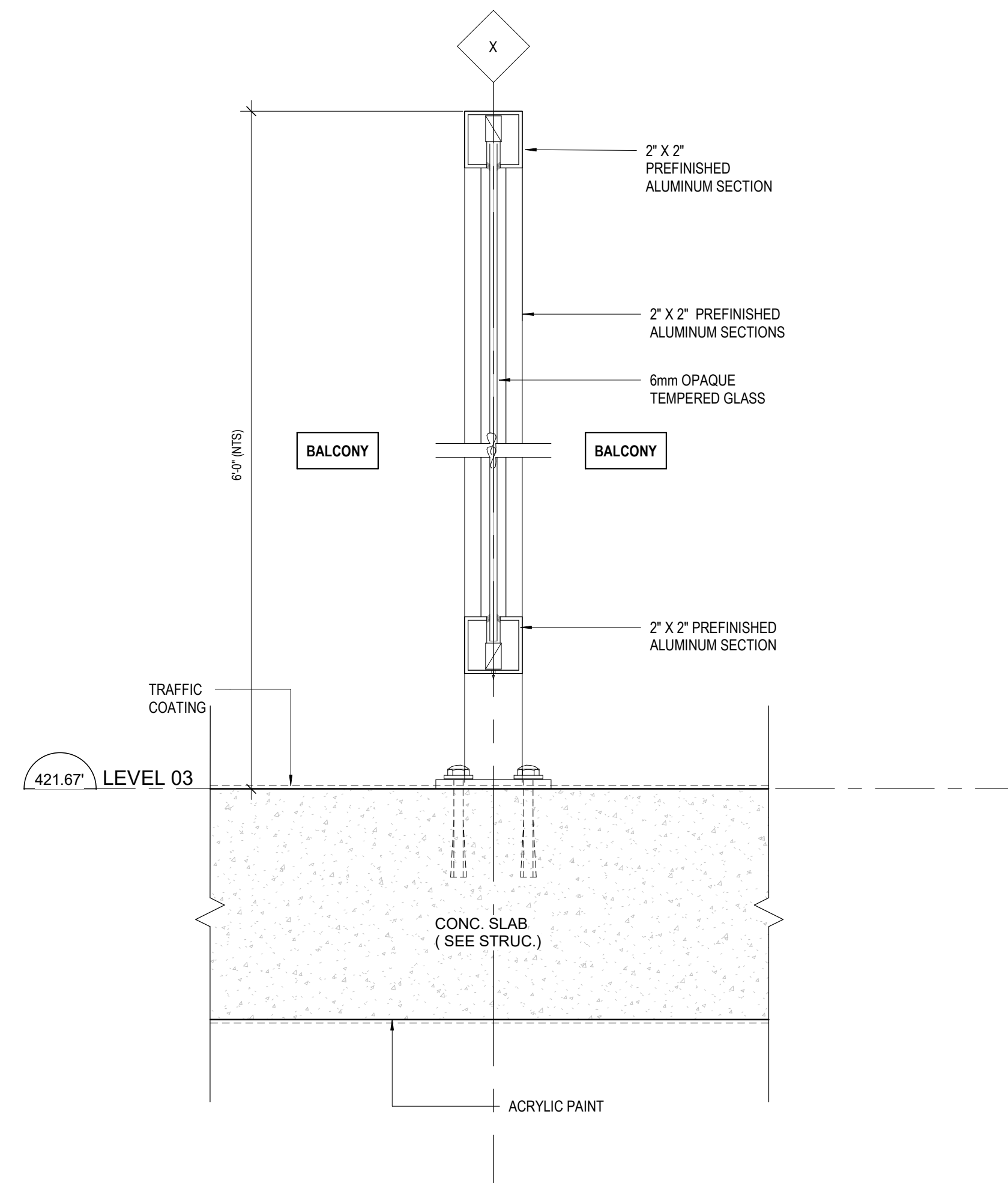
1 CANOPY SECTION (PPA)
A5.01 SCALE: 1/2" = 1'-0"



2 SECTION DETAIL - GLASS CANOPY (PPA)
A5.01 SCALE: 3/4" = 1'-0"



3 MIDRISE BALCONY SEPARATION DETAIL (PPA)
A5.01 SCALE: 1 1/2" = 1'-0"



4 TYP. TOWER PRIVACY SCREEN AT BALCONY
A5.01 SCALE: 3/4" = 1'-0"

CLIENT

OpenForm

PROPERTIES

Suite 1000 - 850 West Hastings Street
Vancouver, BC V6C 1E1

COPYRIGHT

This drawing has been prepared solely for the intended use, thus any reproduction or distribution for any purpose other than authorized by Arcadis is forbidden. Written dimensions shall have precedence over scaled dimensions. Contractors shall verify and be responsible for all dimensions and conditions on the job, and Arcadis shall be informed of any variations from the dimensions and conditions shown on the drawing. Shop drawings shall be submitted to Arcadis for general conformance before proceeding with fabrication.

Arcadis Architects (Canada) Inc.
formerly B&B Group Architects (Canada) Inc.

ISSUES

No.	DESCRIPTION	DATE
1	ISSUED FOR PPA	2022-09-23
2	60% BP DRAWINGS	2022-11-07
3	90% BP DRAWINGS	2023-03-23
4	BP	2023-08-11
5	RE-ISSUED FOR PPA	2023-09-20
6	RE-ISSUED FOR PPA	2024-07-19

CONSULTANTS

SEAL

PRIME CONSULTANT

ARCADIS

1285 West Pender Street - Suite 100
Vancouver BC V6E 4B1 Canada
tel: 604 683 5727
www.arcadis.com

PROJECT

TROFEO (Formerly KHR)
6978 & 6988 Kingsway,
7211 & 7283 Greenford Avenue
Burnaby, BC

PROJECT NO:

118120

DRAWN BY:

Author

CHECKED BY:

Checker

PROJECT MGR:

Designer

APPROVED BY:

Approver

SHEET TITLE

SECTION AND DETAIL

SHEET NUMBER

A5.01.

ISSUE

6