

Accessible Pedestrian Signals

Access Advisory Committee Presentation
November 28, 2024

Background

- **Burnaby Transportation Plan Goals:**
 - Access to Transport Options and Choices
 - Safe and Secure Mobility





Accessible Pedestrian Signals

- Assist pedestrians with vision and/or hearing loss
- Provide audible, vibration and tactile cues

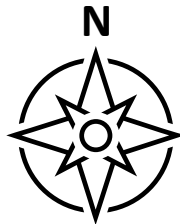
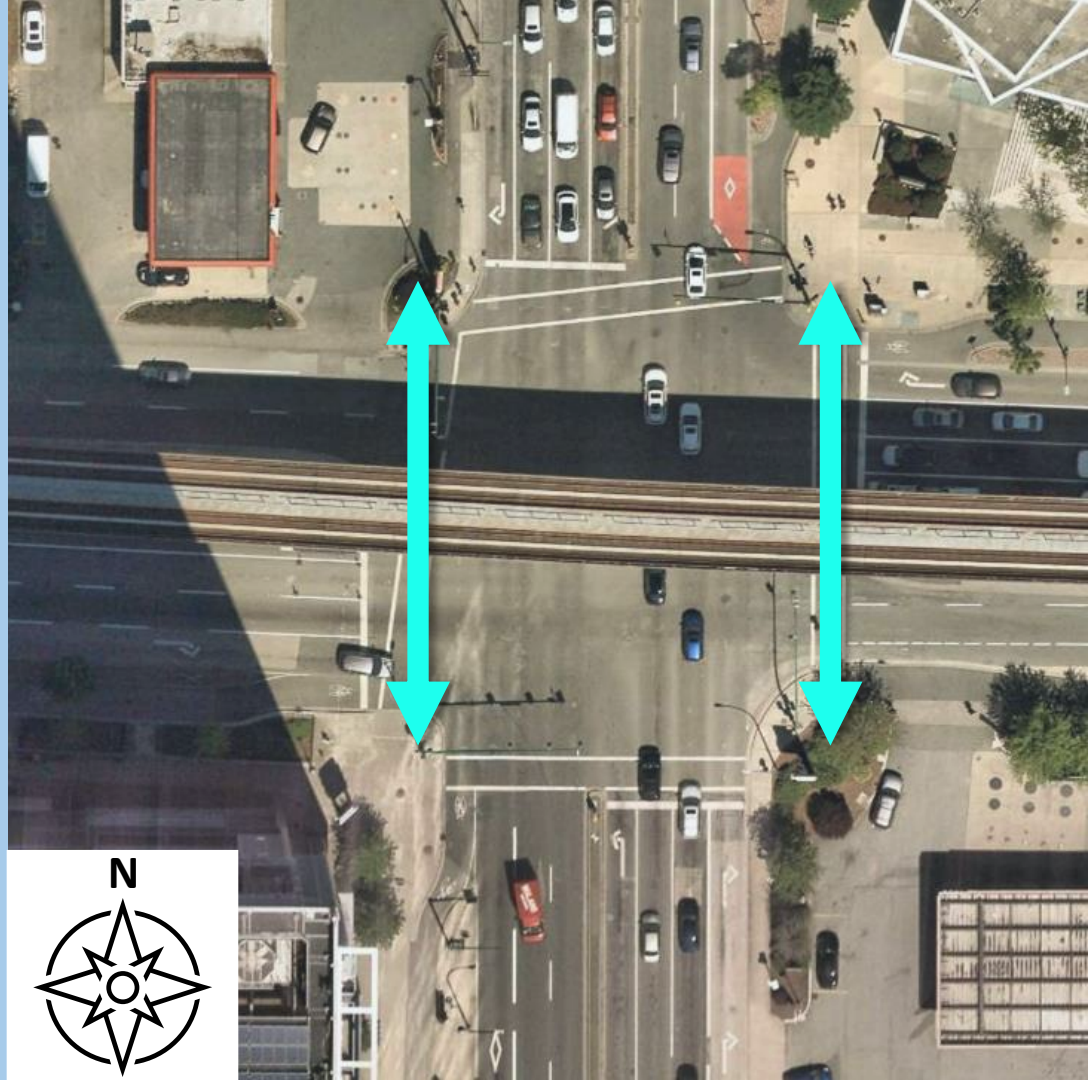
APS Features

- **Audible Indication**
 - Locator tones
 - Increased volume at busier intersections
 - Crossing direction



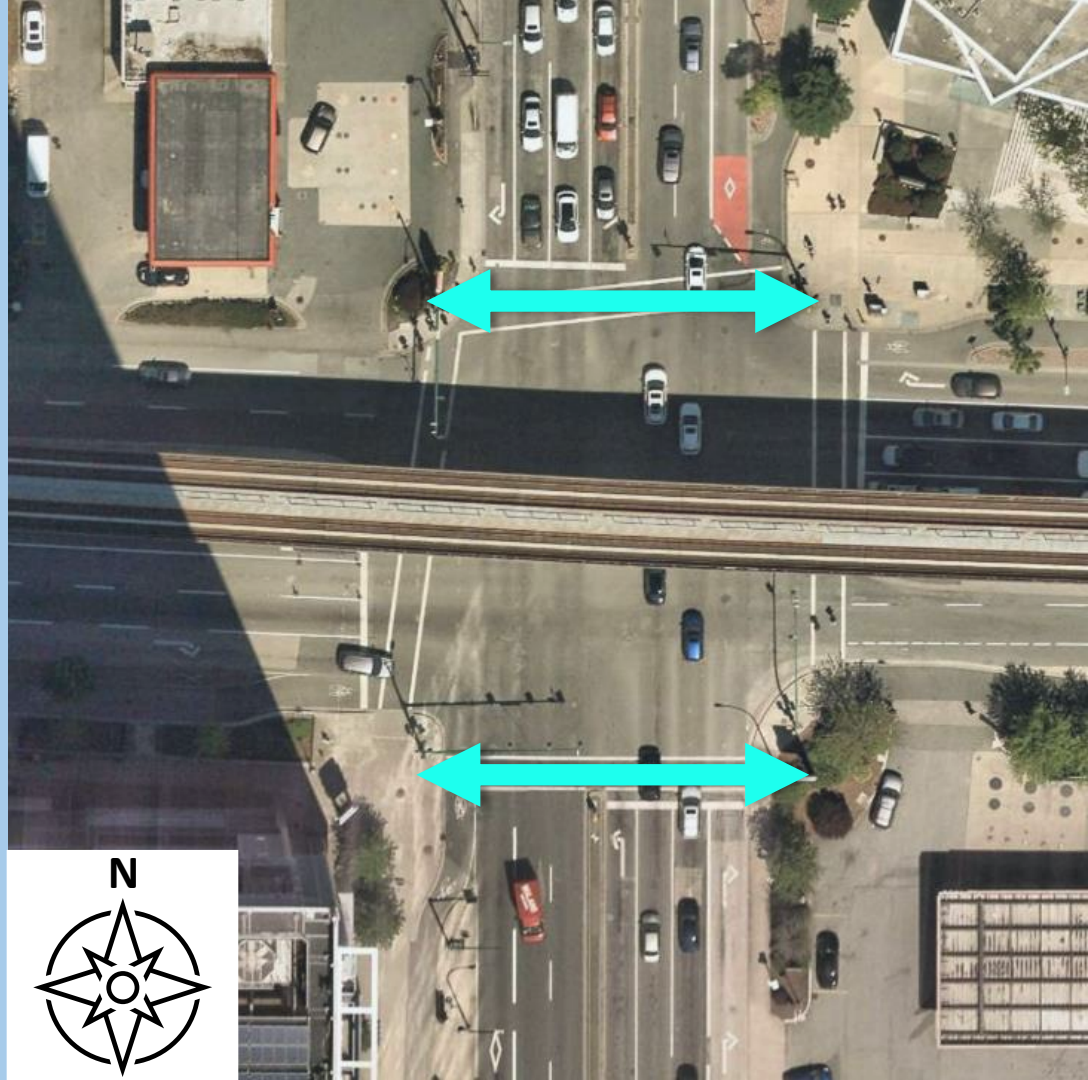
APS Features

- Audible Indication
 - North-South Direction (“cuckoo” tone)



APS Features

- Audible Indication
 - East-West Direction (“chirp” tone)



APS Features

- **Pushbutton Placement**
 - Accessible height
 - Parallel to travel direction
 - Near the crosswalk, facing waiting area
 - Outside of conflicting walking paths



APS Features

- **Vibration and Tactile Indication**
 - Vibration on a “walk” signal
 - Raised arrow on pushbutton





APS Features

Touchless activation – detects a waving hand or similar gesture

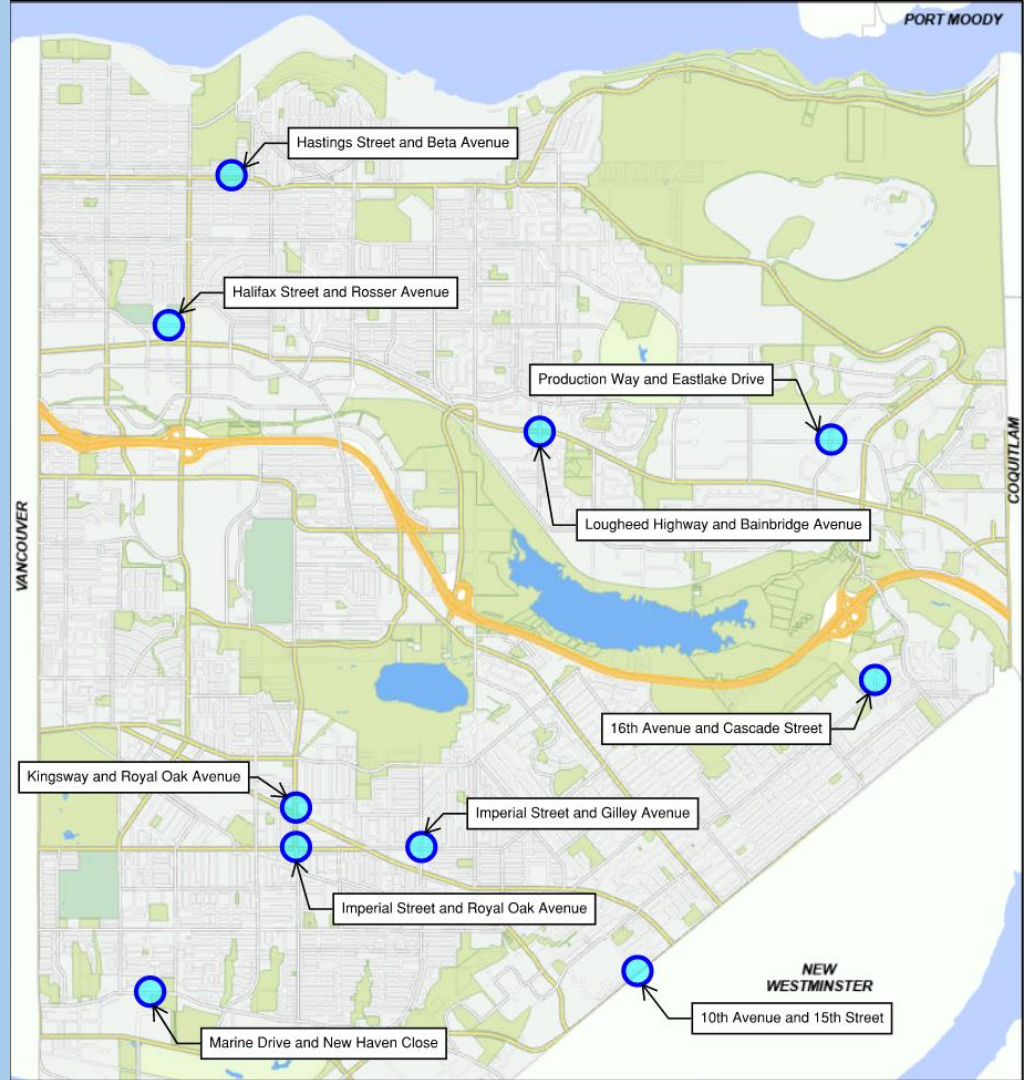
APS Implementation

- Included with all new traffic signals
- Lifecycle replacements through attrition
- Upgrade priorities:
 - Significant number of pedestrians with vision loss or are deaf-blind
 - Large or complex intersections
 - Challenging surrounding conditions
 - Frequent pedestrian collisions



Touchless APS

- Touchless APS is now City standard
- Monitored to guide further refinements
- Installed at 10+ intersections



Thank you!

Any Questions?