

CITY OF BURNABY

BYLAW NO. 14715

A BYLAW to close and remove the dedication of
a certain portion of highway

WHEREAS pursuant to section 40 of the *Community Charter* and section 120 of the *Land Title Act*, Council may by bylaw close part of a highway to traffic and remove the dedication of that part of the highway;

AND WHEREAS Council, before adopting this Bylaw, has caused the required statutory public notice of its intention to be given by advertisement;

AND WHEREAS Council deems it expedient and in the public interest to stop up and close to traffic and remove the dedication of that portion of highway more particularly hereinafter described,

NOW THEREFORE the Council of the City of Burnaby ENACTS as follows:

1. This Bylaw may be cited as **BURNABY HIGHWAY CLOSURE BYLAW NO. 8, 2024.**
2. ALL AND SINGULAR those certain parcels or tracts of land, situate, lying and being in the City of Burnaby, in the Province of British Columbia, more particularly known and described as that portion of lane dedicated by Plan 2855 in District Lot 119, Group 1, New Westminster District containing 302.8m² as shown outlined in bold on Reference Plan EPP142613 (hereinafter called “the closed portion of road”), prepared by Haemee Lee, B.C.L.S., a copy of which is hereunto annexed, is hereby closed to all types of traffic.

3. The dedication of the closed portion of lane as highway is removed.

Read a first time this 14th day of January, 2025

Read a second time this 14th day of January, 2025

Read a third time this 14th day of January, 2025

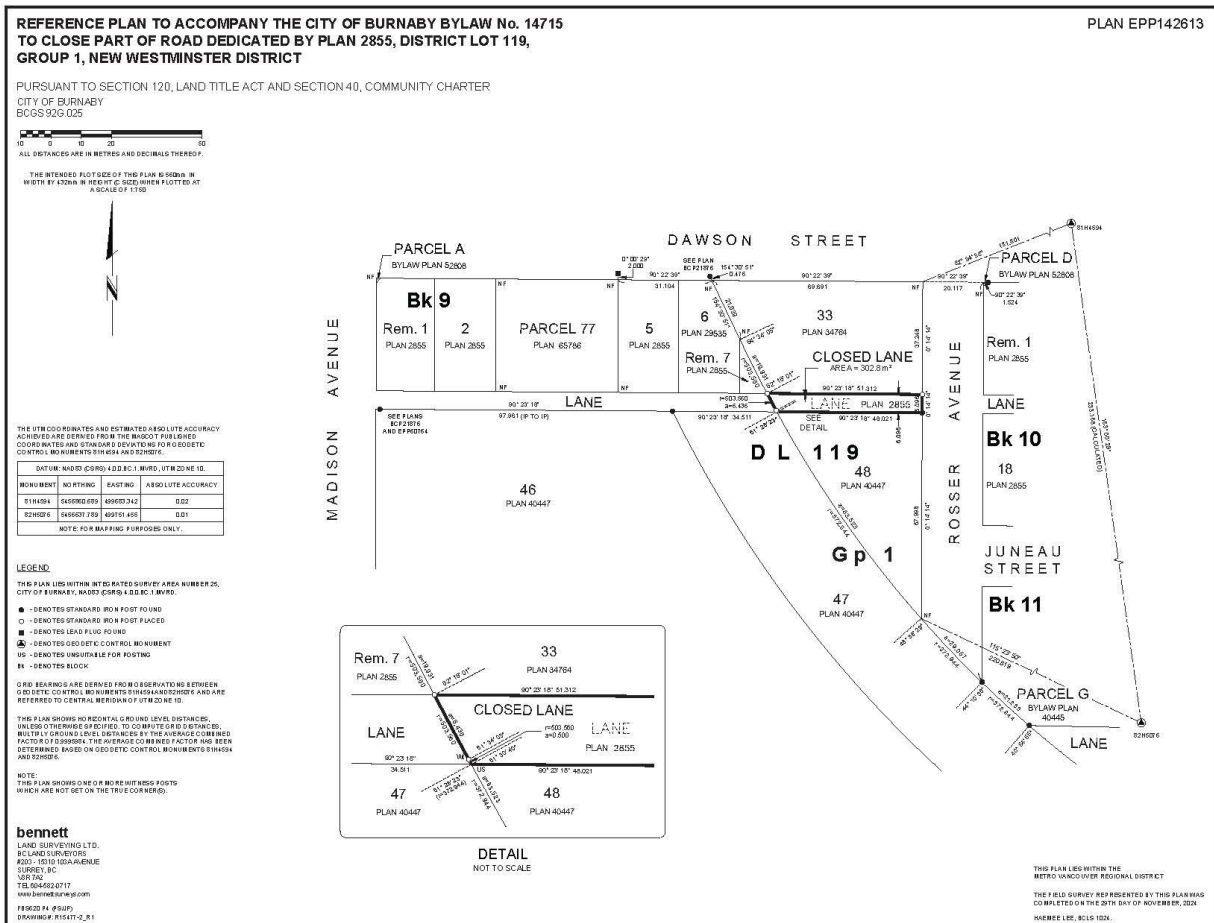
Public Notice Dates this 16th day of January, 2025, and 23rd day of January, 2025

Reconsidered and adopted this _____ day of _____, 2025

MAYOR

CORPORATE OFFICER

Schedule "A"



© COMPANYSURVEYING 1000-1000-1000 2211 ROSSEY AVE (BURNABY) (DRAWINGS) LEGAL PLAN#14715-2_X1.DWG