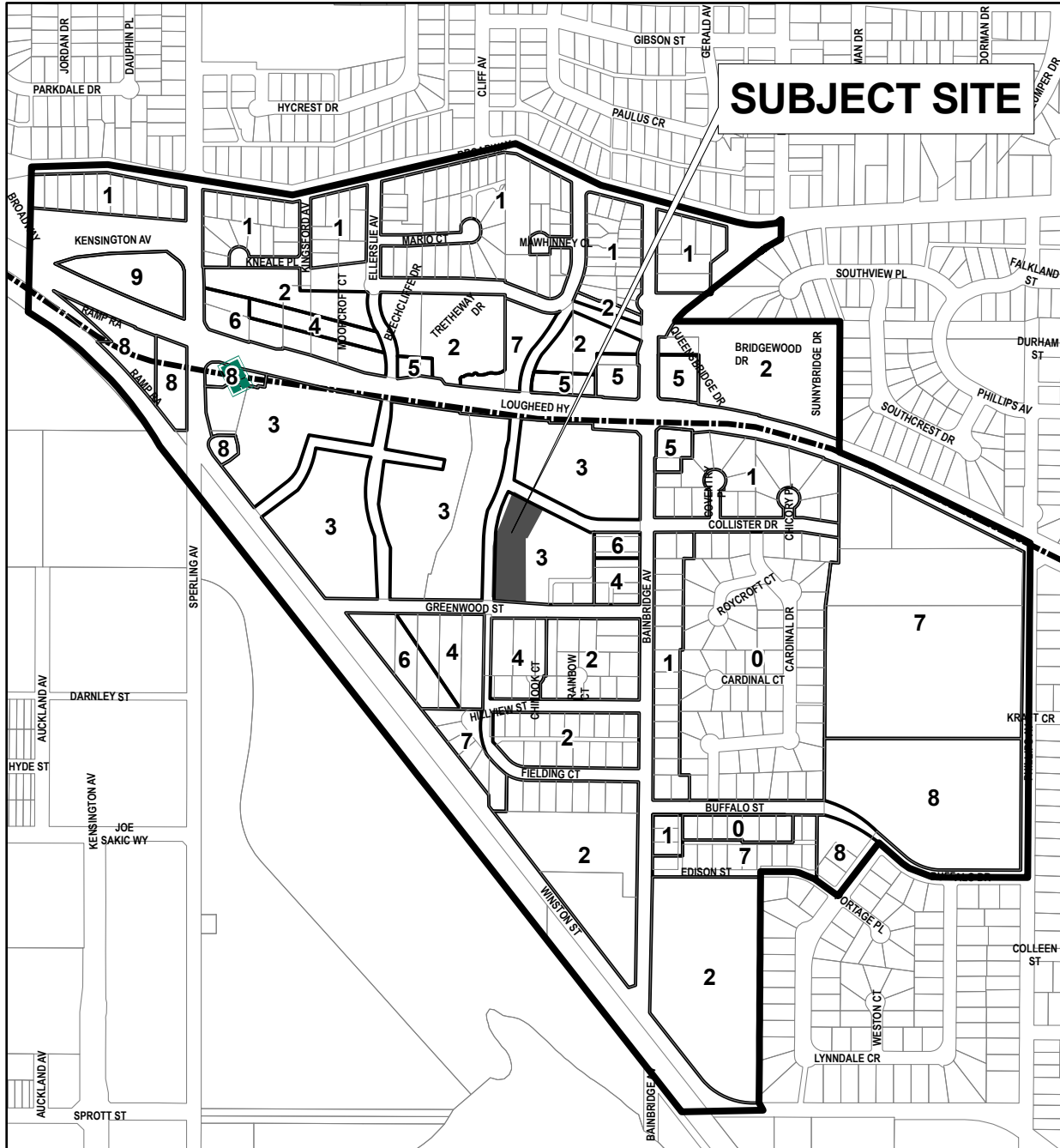


Sketch #1

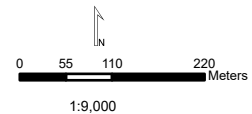


Bainbridge Community Plan

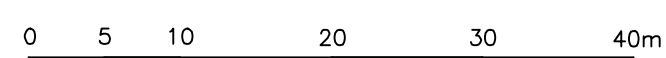
- | | |
|-------------------------------------|--|
| 0 Future Planning Area | 5 Medium Density Residential with Commercial/Employment |
| 1 Low Density Residential | 6 High Density Residential with Commercial/Employment |
| 2 Medium Density Residential | 7 Existing/Proposed Park Space |
| 3 Village Core Mixed-Use | 8 Community Uses |
| 4 High Density Residential | 9 Crown Land |



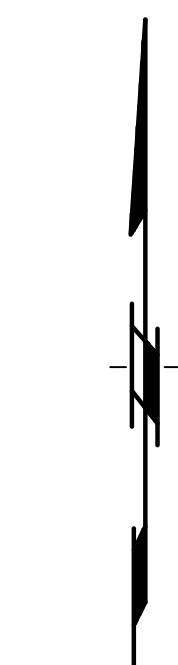
PLANNING AND DEVELOPMENT DEPARTMENT



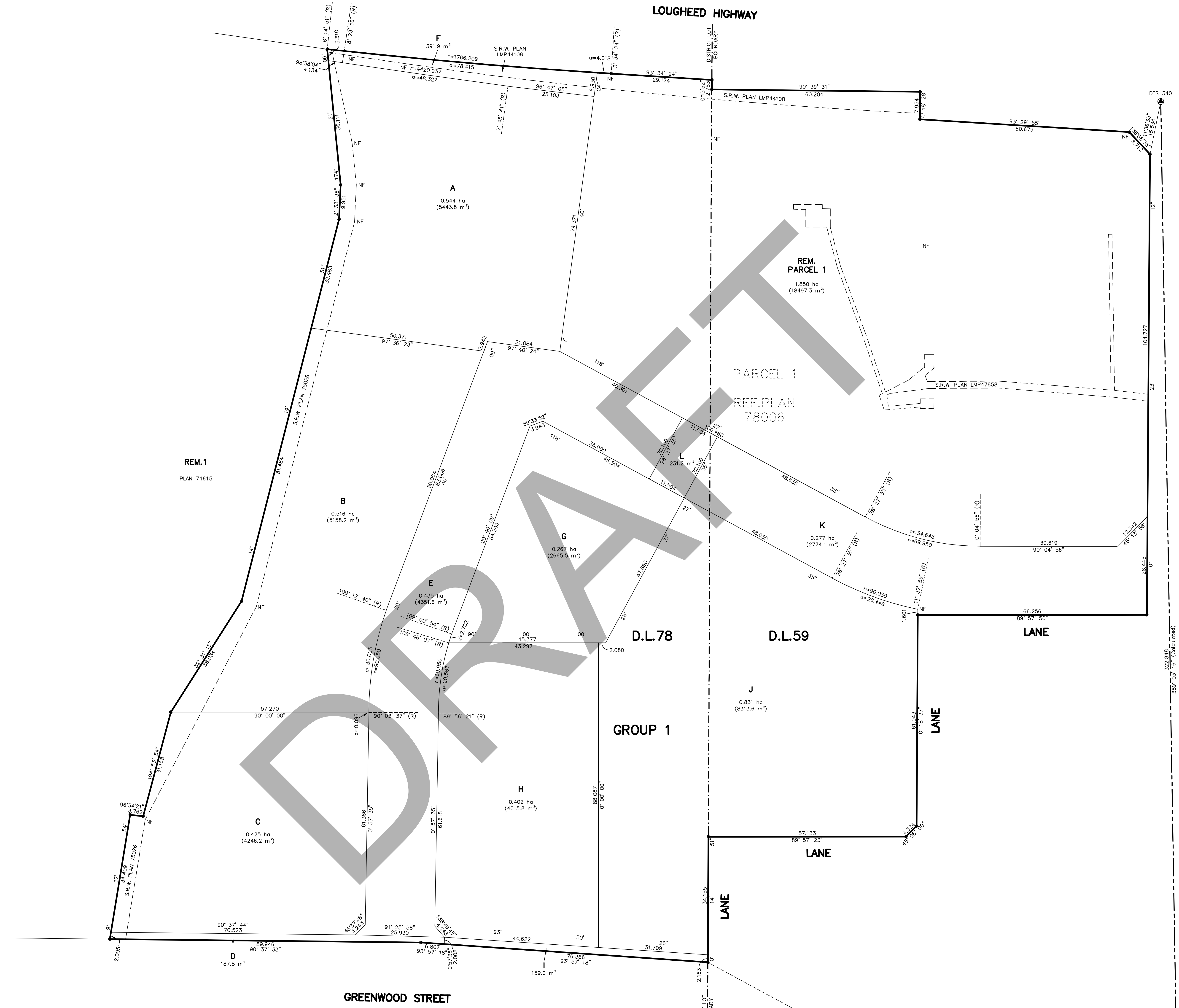
BCGS:92G.026



All distances are in metres and decimals thereof unless otherwise indicated.
The intended plot size of this plan is 1118mm in width by 864mm in height (sheet size E) when plotted at a scale of 1:500.
Some symbols and lines have been exaggerated for clarity.



LEGEND
 ● standard iron post found
 ▲ control monument found
 ha hectares
 m² square metres
 a= arc length
 r= radius
 (R) radial bearing
 NF nothing found



Integrated Survey Area No. 25, City of Burnaby
 NAD83(CRS) 4.0.0.BC.1.MVRD
 Grid bearings are derived from observations between geodetic control monuments DTS 340 and DTS 339 and are referred to the central meridian of UTM Zone 10. The UTM coordinates and estimated absolute accuracy achieved have been derived from the MASCO published coordinates and standard deviations for geodetic control monuments DTS 340 and DTS 339. This plan shows horizontal ground-level distances unless otherwise specified. To compute grid distances, multiply ground-level distances by the average combined factor of 0.9995862 which has been derived from geodetic control monument DTS 340.

SCM	NORTHING	EASTING	ESTIMATED ABSOLUTE ACCURACY
DTS 340	5456198.357	503198.124	0.03m
DTS 339	5455875.681	503201.450	0.02m

Ken K. Wong and Associates
 B.C. Land Surveyor
 5624 E. Hastings Street
 Burnaby, B.C. V5B 1S4
 Telephone: (604) 294-8881
 Fax: (604) 294-0625
 Email: ken_wong@kenwongassociates.com
 210734 FB966 P83
 R-7244 R-11577 TGA-726A
 Drawn by: AD

FILE: SV-299

This plan lies within the Metro Vancouver Regional District.

This plan lies within the jurisdiction of the Approving Officer for the City of Burnaby.

Sketch #3

The field survey represented by this plan was completed on the 3rd day of February, 2025.
 Steven E. Wong, B.C.L.S. 942