



# BC Parkway Boundary to Royal Oak Draft Framework Plan

MARCH 2025



Prepared for:



Prepared by:

**HAPA**  
COLLABORATIVE

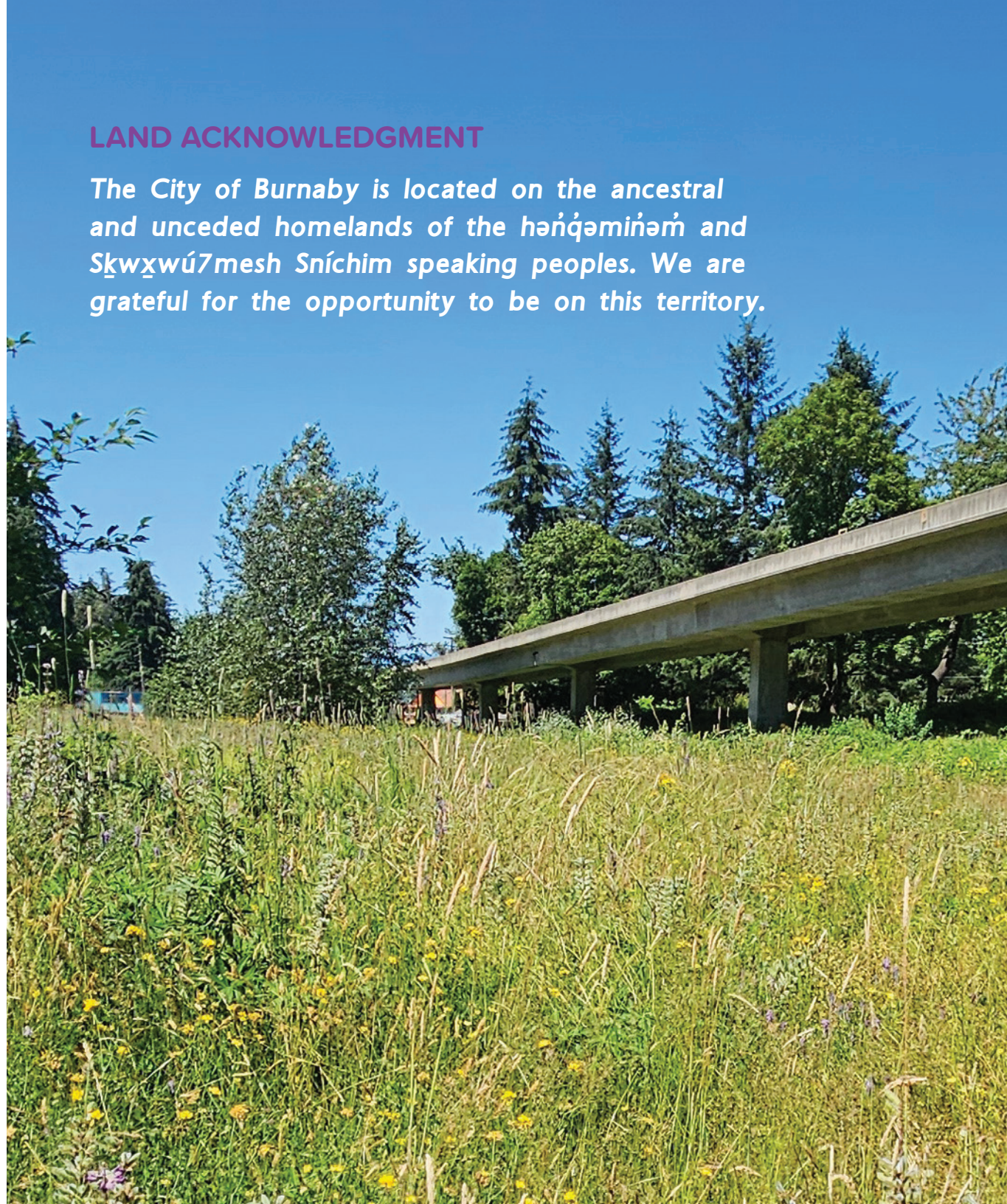
In collaboration with:



**boyle**

## LAND ACKNOWLEDGMENT

*The City of Burnaby is located on the ancestral and unceded homelands of the hən̓q̓əmin̓əm̓ and Skwxwú7mesh Sníchim speaking peoples. We are grateful for the opportunity to be on this territory.*



# Contents

<b>1.0 Introduction .....</b>	<b>2</b>
1.1 Project Overview .....	2
1.2 What is a Framework Plan .....	4
1.3 Plan Structure .....	4
1.4 Project Process .....	5
1.5 Engagement Process .....	6
<b>2.0 Background Information.....</b>	<b>8</b>
2.1 Site Description.....	8
2.2 Development Context and Trail Improvements .....	9
2.3 Environmental Context .....	10
2.4 Policy Context .....	11
2.5 Photographic Inventory .....	12
2.6 Site History .....	14
2.7 Site Analysis.....	16
<b>3.0 Vision and Guiding Principles .....</b>	<b>20</b>
3.1 Vision Statement.....	20
3.2 Guiding Principles .....	21
<b>4.0 The Concept Plan .....</b>	<b>22</b>
4.1 Character Areas.....	22
4.2 Burnaby Gateway.....	24
4.3 Central Park .....	28
4.4 Patterson East .....	32
4.5 Metrotown Station.....	36
4.6 South of Bonsor.....	40
4.7 Royal Oak SkyTrain Station .....	44

<b>5.0 Corridor Wide Design Guidelines.....</b>	<b>48</b>
5.1 Amenities and Comfort.....	48
5.2 Connectivity.....	49
5.3 Planting Strategy .....	50
5.4 Signage and Wayfinding .....	51
5.5 Programming and Events.....	52
5.6 Placemaking.....	53
5.7 Branding.....	54
<b>6.0 Implementation Plan .....</b>	<b>56</b>
6.1 Overall Considerations .....	56
6.2 Recommended Studies .....	56
6.3 Phasing Plan .....	57
6.4 Temporary Initiatives .....	58
6.5 Partnerships.....	59
6.6 Community Stewardship .....	60
6.7 Governance .....	60

## Appendix A: Site Analysis

## Appendix B: Branding Package



# 1.0 Introduction

## 1.1 PROJECT OVERVIEW

### PROJECT AND OBJECTIVE

The City of Burnaby has a strong aspiration to reinvigorate the BC Parkway corridor lands from Boundary Road to Royal Oak SkyTrain Station (from here-in referred to as “the Parkway”), into an attractive and pleasant community asset. The corridor lands under study start at Boundary Road, passing through Central Park, Metrotown, Bonsor Recreation Complex grounds, and ending in the Royal Oak neighbourhood.

**The primary objective for the project is to enhance the user experience along the Parkway by creating a series of attractive and vibrant new public spaces for gathering, enjoyment and recreation, breathing life into the heart of the City.**

It is important that the enhanced Parkway builds on the existing valuable ecological integrity of certain pockets, such as in Central Park, and that it also enhances the

vitality of Metrotown as the City’s cultural and civic heart. The plan must also respond to the diversity of adjacent land uses with sensitivity and opportunity, complimenting existing recreational and social spaces and seeking partnership opportunities. Lastly, it is important to recognize the existing challenge of various underground incumbrances and work to find clever design solutions.

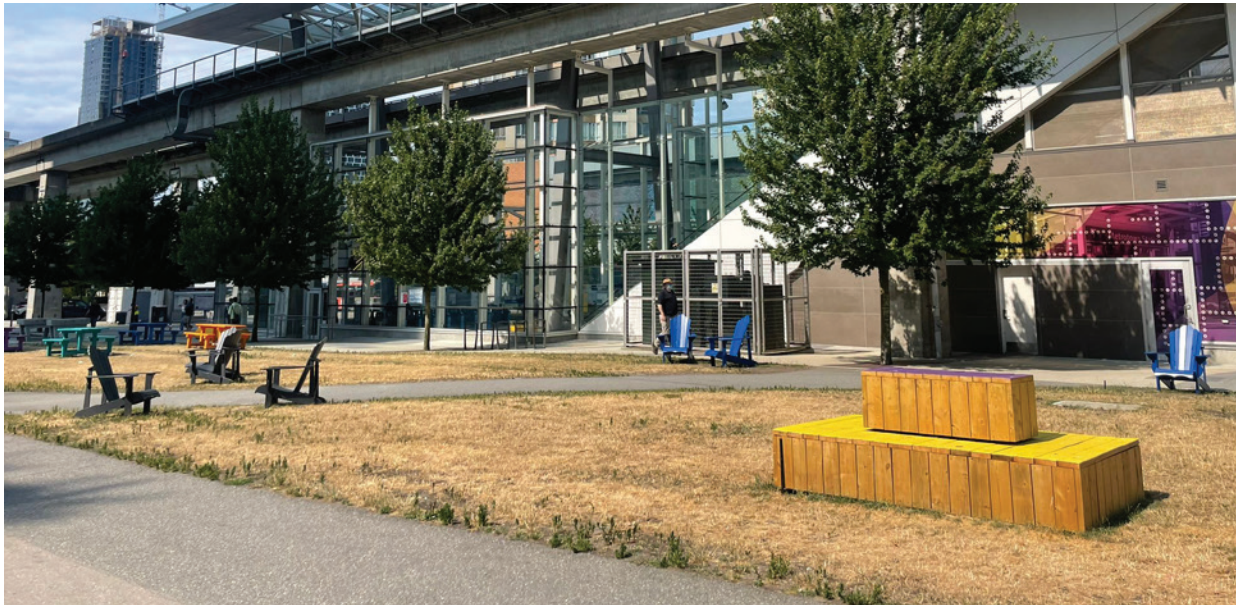
### PURPOSE OF THE PLAN

The new Framework Plan (“the Plan”) presented herein, sets the stage for the long term vision for the Parkway, reflecting the needs and aspirations of the community while complimenting the existing and future Municipal Park system. It provides a concept plan with program and layout, supplemented with an implementation strategy of how to transform the corridor into the aspired vibrant linear park.

The development of the Plan was first initiated as part of the Metrotown Downtown Plan (2017), which identified the need to develop a unified urban design approach to address the aesthetic and functional requirements of integrating the Parkway with Beresford Street and Central Boulevard. As the parameters for the development of a Framework Plan were being prepared, the project area was extended to encapsulate the bookends of Central Park and Royal Oak for a more substantial and cohesive concept plan study.

### THE PARKWAY ALIVE INITIATIVE

In the summer of 2023, the City began building momentum for the project by developing the Parkway Alive program, which saw the implementation of temporary initiatives, including music, ping pong tables, planters, seating and more.



Parkway Alive temporary furnishings installed at Metrotown, in summer 2024





## STUDY AREA OVERVIEW



## 1.2 WHAT IS A FRAMEWORK PLAN

A framework plan is a policy document that sets out a cohesive vision and associated implementation plan for a long-term build-out project, and helps guide future planning and decision-making by City staff. It considers multiple design layers, such as hydrology, ecology, circulation, programming, placemaking, education, safety, and more.

The Framework Plan for the BC Parkway corridor project will help bring the vision for a lively corridor into reality. It includes a vision statement, guiding principles for design, an overarching concept plan, highlighting priorities and long-term aspirations, alongside design guidelines, organized by a series of character defining areas. A well organized plan is important to effectively initiate change effectively, as such the Plan includes an implementation strategy that outlines a phasing plan for each character area.

### PLAN INPUTS

**PROJECT VALUES AND ASPIRATION**  
Project goals and City policies

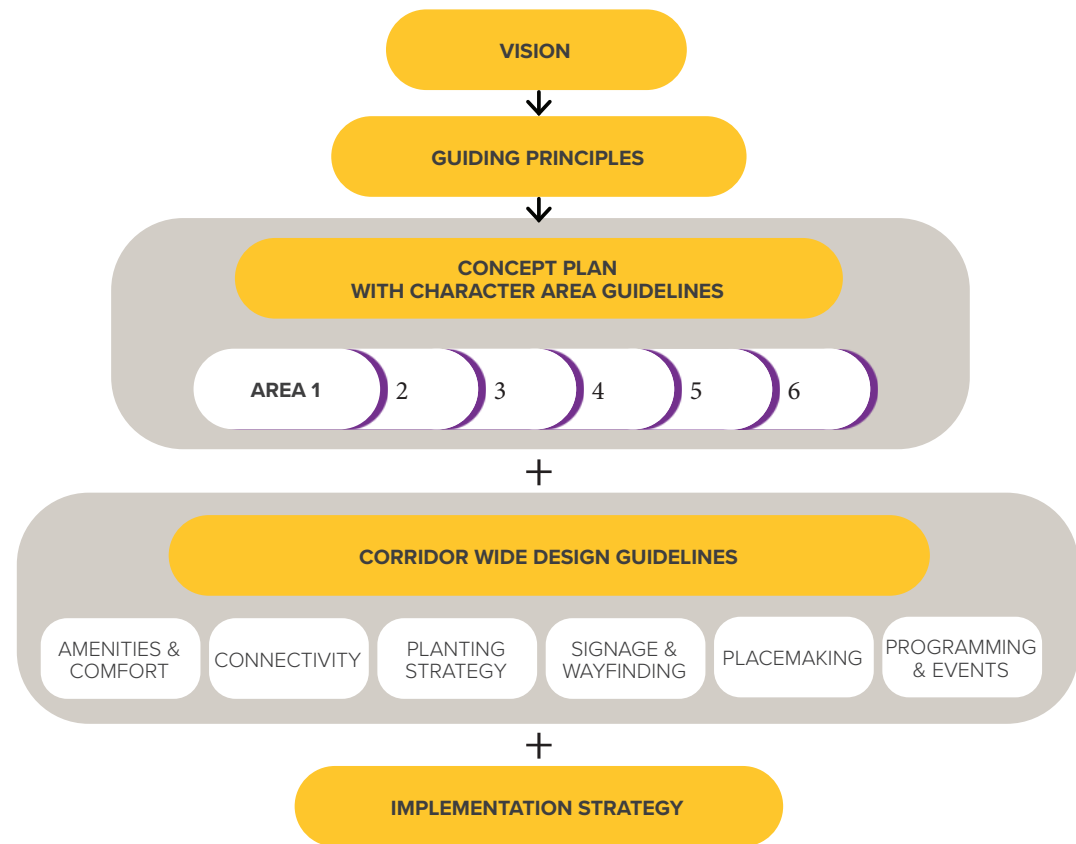
**SITE INVENTORY AND ANALYSIS**  
Existing conditions, constraints and opportunities

**PUBLIC ENGAGEMENT**  
Pop-up events, open houses, interviews and surveys

## 1.3 PLAN STRUCTURE

The BC Parkway Boundary to Royal Oak Framework Plan structure is outlined graphically below. It encompasses a Vision statement and Guiding Principles for the corridor study area, a corridor wide concept plan and associated design guidelines, additional overarching design guidelines, and an implementation strategy that includes a phasing plan.

The report itself also includes relevant background information, including project process, a summary of the engagement process and a summary of early site analyses, as well as contextual historical, cultural and policy findings.





## 1.4 PROJECT PROCESS

The BC Parkway Boundary to Royal Oak Framework Plan was launched at the beginning of 2024 with the involvement of external consultants. The process included the following phases: site analysis, visioning through engagement, the draft framework plan, and final framework plan. Two rounds of consultation were completed, which included public open houses, interested parties meetings, staff workshops, and targeted workshop events.

### PROJECT TIMELINE

