



Youth engagement drawing activity

## 1.5 ENGAGEMENT PROCESS

Two rounds of public consultation were completed as part of the BC Parkway Boundary to Royal Oak Framework Plan project process.

The first round of engagement was held in Spring 2024 with the goal to introduce the community to the project, and to hear their thoughts on the site opportunities, constraints, values, needs, and priorities to be addressed in the framework plan. The outcomes of the first round of engagements helped form the Vision Statement and Guiding Principles for the Plan, and identified priorities that informed the development of a draft concept plan.



### TWO ONLINE SURVEYS

Questionnaire and interactive map [April 8-29, 2024]

Online questionnaire [September 19-October 14, 2024]

A City email address was also available for anyone wanting to send additional comments.



### FIVE PUBLIC POP-UP EVENTS

City staff, a consultant team, and TransLink representatives were on hand to answer questions and provide information through a series of interactive display boards.

[April 22, 27 and 28, 2024] and [October 5-6, 2024]



### FOCUSED ENGAGEMENT

Focused virtual meetings and in-person drop-in sessions were facilitated by invitation for stakeholders, interested parties, seniors, and youth.

[April and May 2024] and [October 8 and 16, 2024]



The second round of engagement was held in Fall 2024, where a draft framework plan was presented to the community for feedback. Participants had a chance to share what they liked about the concept plan for each character area of the Parkway, as well as voice any concerns or missing elements. The outcomes of the second round of engagement helped refine the final Framework Plan as well as inform the development of priorities in the implementation and phasing schedule.



**1278**  
SURVEY  
RESPONSES

**300+**  
EVENT  
VISITORS

**1600+**  
VOICES HEARD



Public open house hosted in August of 2024 as part of Round 2 engagement events.



## 2.0 Background Information

### 2.1 SITE DESCRIPTION

The study area for Burnaby's BC Parkway Enhancement Project is located between Boundary Road and Royal Oak SkyTrain Station. It is a three-kilometre, 30-metre-wide strip of land currently owned by BC Hydro and leased in part to TransLink. The Parkway serves as a key movement corridor for active transportation but hopes to become a greater asset in the future with the establishment of new open spaces, linkages, and programming.

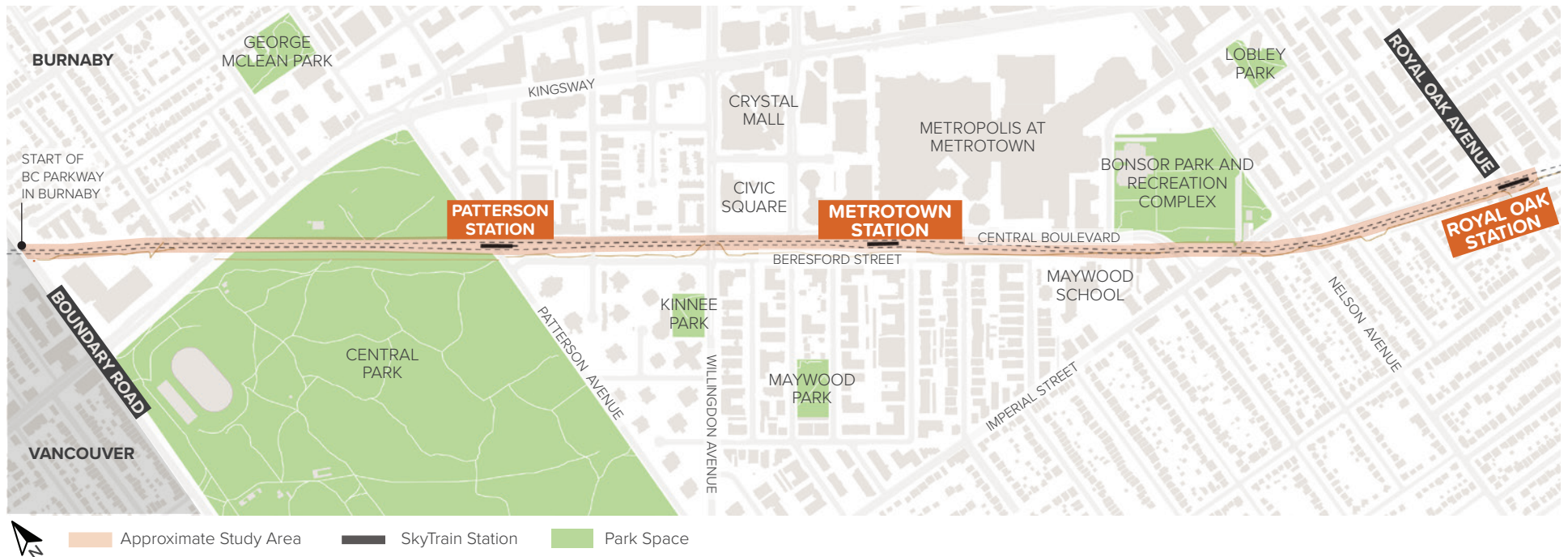
There are a number of key amenities lining the corridor, including Bonsor Recreation Complex; Central Park; Maywood Community School; the Bob Prittie Library and Civic Square; Patterson, Metrotown and Royal Oak SkyTrain Stations, as well as two major shopping

centres: Metropolis at Metrotown and Crystal Mall. It will be beneficial to find synergies for complementary open spaces along the Parkway, expanded programming and shared community stewardship.

As Metrotown continues to densify, open space assets will become increasingly important in meeting the needs of residents and providing amenities and connectivity. Future use and design of the Parkway should be carefully considered and planned to be best positioned for intended uses, manage demands and maximize utility. The Parkway should seek to become the connective tissue that brings communities together.



Key map showing the study area in orange, in the context of the wider BC Parkway trail system shown in black.



## 2.2 DEVELOPMENT CONTEXT AND TRAIL IMPROVEMENTS

### FUTURE DEVELOPMENTS

There are a series of future development and park projects planned along the Parkway corridor that will be important to consider in the planning of new open space assets as part of the Framework Plan.

**Telus Redevelopment** - The mixed-use urban infill redevelopment of the Telus Boot property is currently undergoing the development approval process.

**Central Park Master Plan** - The City of Burnaby is creating the Central Park Master Plan (CPMP) as a long-term vision that will guide future improvements of the park over the next few decades. The CPMP will be created in two phases, the first of which includes the majority of Central

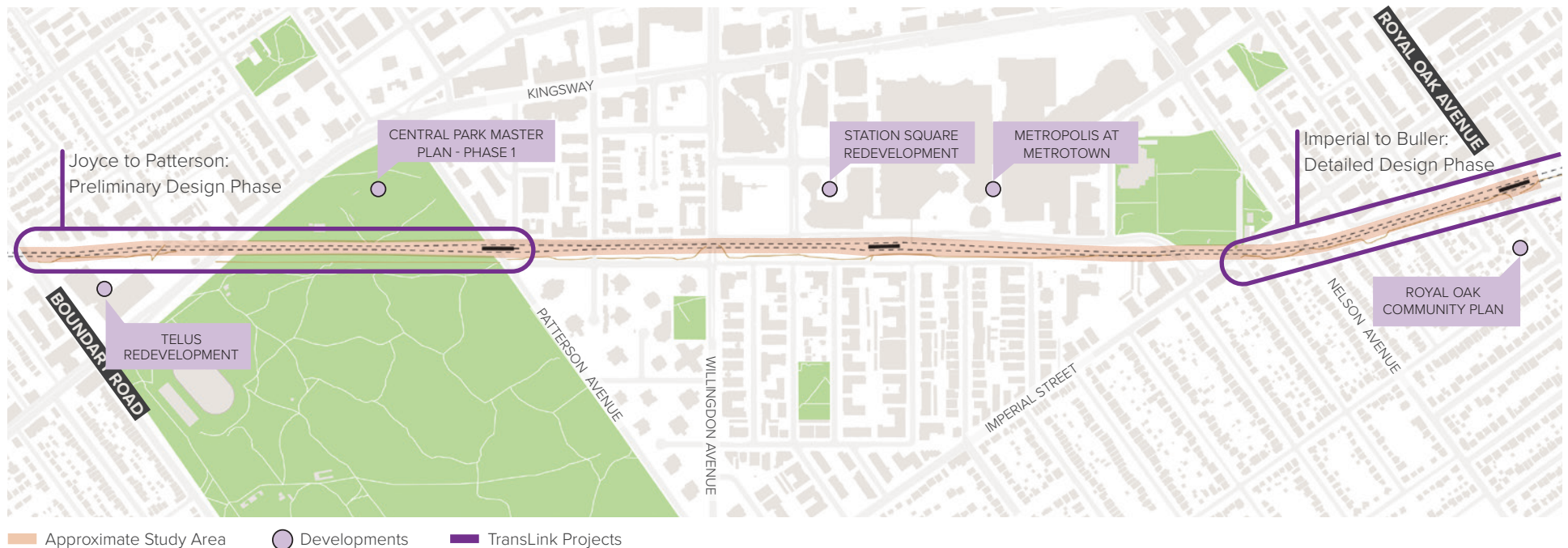
Park North. The priority is to develop a new destination playground as well as a plaza area to support Patterson SkyTrain Station.

**Metropolis at Metrotown and Station Square** - These are two key large-scale, mixed-use redevelopments anticipated in Metrotown. Phase 1 of Metropolis alone is expected to be developed over the next 30 years. There will be a significant impact on the density and public space needs for the immediate community, as well as visitors.

**Royal Oak Community Plan** - The final Royal Oak Community Plan is expected to be completed and presented to Council in 2025. It will guide the development of the Urban Village centre over the mid to long term.

### TRANSLINK BC PARKWAY TRAIL ENHANCEMENTS

TransLink is working on improvements to the regional BC Parkway trail network in coordination with various municipalities, to create a safer commuting and recreational route for all. The goal is to create separated bike and pedestrian paths with consideration for supporting amenities and safe crossings. There are two TransLink projects currently underway in the section of the Parkway under study that include: Joyce to Patterson, and Imperial to Buller Ave. Collaboration between the City of Burnaby and TransLink has been an important part of this project process and will continue to be so as the Framework Plan gets implemented over the coming years.





## 2.3 ENVIRONMENTAL CONTEXT

It is important to recognize the placement of the Parkway study area relative to its broader environmental context to better understand regional impacts and opportunities.

### WATERSHED CONTEXT:

The Parkway corridor interestingly aligns with the dividing line of two major watersheds: The Central Valley and Fraser River watersheds. The Parkway is also a meeting place of six different creek-related watersheds. In theory, the water flow would move away from the Parkway but in reality, there are various swales along the corridor that serve to capture overland flow. Water management as a whole is an important consideration in the future planning and design of programming and uses in the corridor.

#### Opportunities:

- Consider the unique position and alignment of the Parkway in relation to the watersheds as inspiration for public art and storytelling in the context of placemaking and wayfinding.
- Celebrate the movement and storage of water on the parkway through rain gardens, better designed swales and other stormwater features.
- Opportunity to integrate the water story into future wayfinding, public art and other storytelling features.

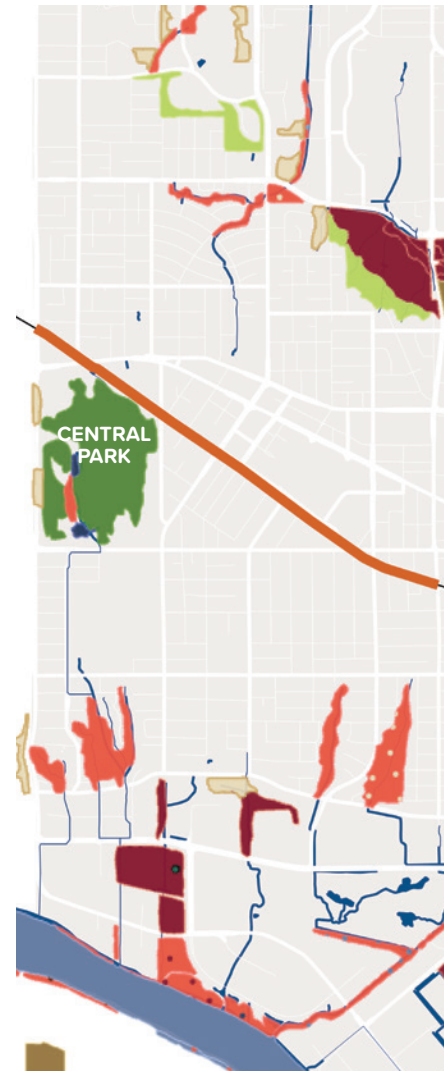
### ECOLOGICAL CONTEXT:

The area along the study site is limited in its ecological assets, however neighbouring Central Park stands prominently as a significant asset to be protected. It includes a mature temperate rainforest ecology that is considered sensitive in its integrity as an ecosystem for a great diversity of wildlife.

#### Considerations:

- The Parkway should strive to provide green infrastructure to not only support the City's sustainability, resilience and urban tree canopy related policy goals, but also as part of Indigenous Reconciliation efforts.
- The Parkway should aim to respond sensitively to Central Park's forest ecosystem and explore the opportunities with incorporating a native planting palette throughout the corridor.

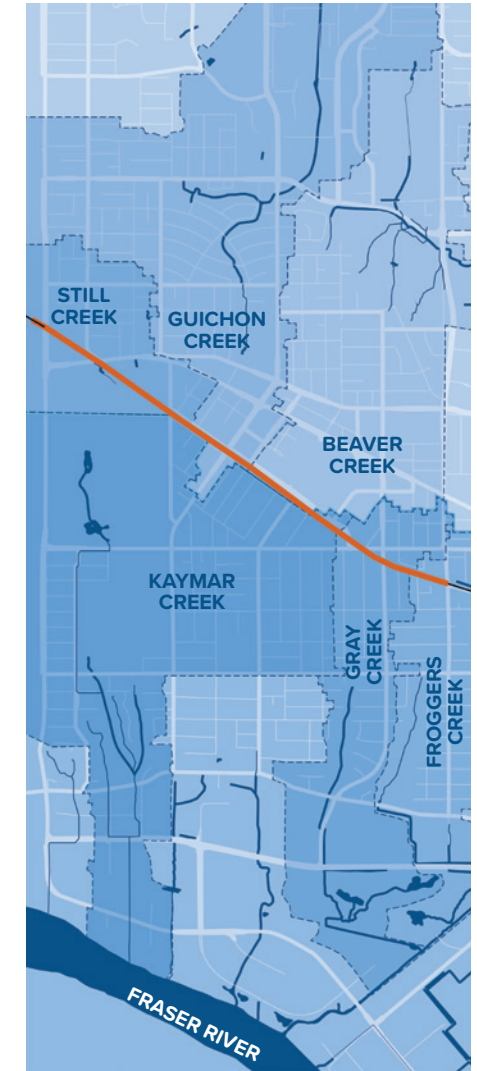
BC PARKWAY  
ECOSYSTEM CLASSIFICATION



#### LEGEND

	Wetland		Mature Forest (Modified)
	Riparian		Non Sensitive Or Modified Ecosystem
	Mature Forest (Sensitive)		Old Field
	Young Forest		River

BC PARKWAY  
WATERSHEDS



BC Parkway Study Area

## 2.4 POLICY CONTEXT

There are a number of City policies and initiatives that set out the considerations, standards and priorities for the development of a Framework Plan for Burnaby's BC Parkway corridor. These policies will be influential in setting the stage for a future-proof, ecologically sound design that helps establish a unique sense of place in downtown Burnaby and contribute to placemaking.

### Some of the most pertinent policy documents include:

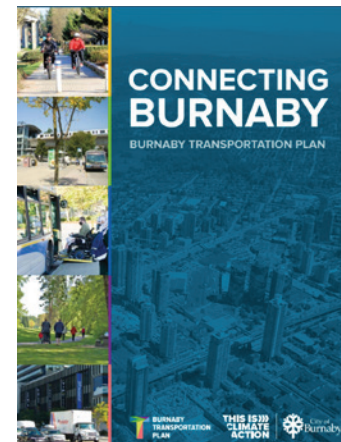
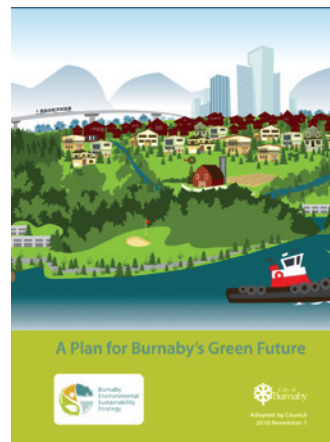
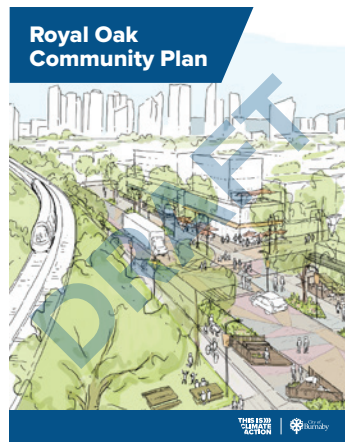
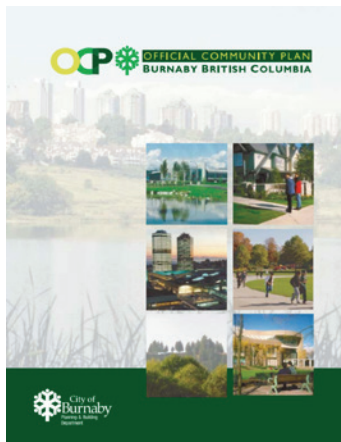
Burnaby's OCP, Royal Oak's Community Plan, the Burnaby Transportation Plan, Metrotown Downtown Plan, Burnaby's Environmental Sustainability Strategy, BC Parkway Site Assessment Report and Engagement Summary, Central Park Management Plan, Urban Forest Strategy, Public Art Policy, TransLink Safety Improvement Study, and TransLink Wayfinding Guidelines.

### Key takeaways relevant to the project:

- Burnaby's OCP supports the enhancement of parks and open spaces in order to accommodate the growing population and recreational requirements while protecting environmental assets.
- The Metrotown Downtown Plan sets the direction to develop strategies for the activation of Metrotown and surrounding areas. It denotes two key gateway moments at Willingdon Avenue and McMurray Avenue. It also suggests new plaza spaces near Metrotown that the Parkway must integrate into its Framework Plan.
- Burnaby's Transportation Plan encourages new connections to public spaces and downtown, for both pedestrians and cyclists, as well as promoting the enhancement of active transportation routes.
- Burnaby's Environmental Sustainability Strategy encourages the use of native plants to promote

biodiversity, and focuses on connecting habitats through green corridors.

- The Royal Oak Community Plan defines an "Urban Village" small scale commercial plaza by the SkyTrain Station and in general, an increase in missing middle medium density housing opportunities. New open spaces along the parkway should consider accommodating this demographic and anticipate the influx in population in the area.





## 2.5 PHOTOGRAPHIC INVENTORY

