

6.4 TEMPORARY INITIATIVES

In order to keep momentum and excitement rolling among Burnaby residents in the waiting period for implementation of the Parkway corridor, there are a number of opportunities for temporary activation. They can be similar in nature, or complementary to the Parkway Alive initiative that has been in place for the last two summers in 2023 and 2024. Opportunities include:

- Bringing in temporary containers near Metrotown SkyTrain Station to house small scale commercial uses such as a coffee shop or lemonade stand.
- Organizing seasonal markets in the open plaza spaces alongside Metrotown or near Patterson SkyTrain Station.
- Programming rotating art installations in partnership with community groups, local artists, or host Nations.
- Offering programming for music and dance groups during cultural celebrations.
- Initiating a beautification programming that would see the installation of moveable containers with seasonal plantings such as Christmas trees in the winter.
- Initiating an invasive species management program in coordination with local community groups and potentially schools.
- Carving out a couple of pockets in area 3 or 5, paving them with decorative asphalt or compacted gravel surfacing and installing games tables, racket sports tables or exercise equipment along pathways. Alternatively, seasonal sports courts with temporary surfacing can be installed such as beach volleyball pits for summer months or skating rink in the winter.
- Creating temporary dog park areas or community gardens in partnership with community groups as a pilot project to gauge interest and commitment for stewardship and care.



Precedents of temporary initiatives

6.5 PARTNERSHIPS

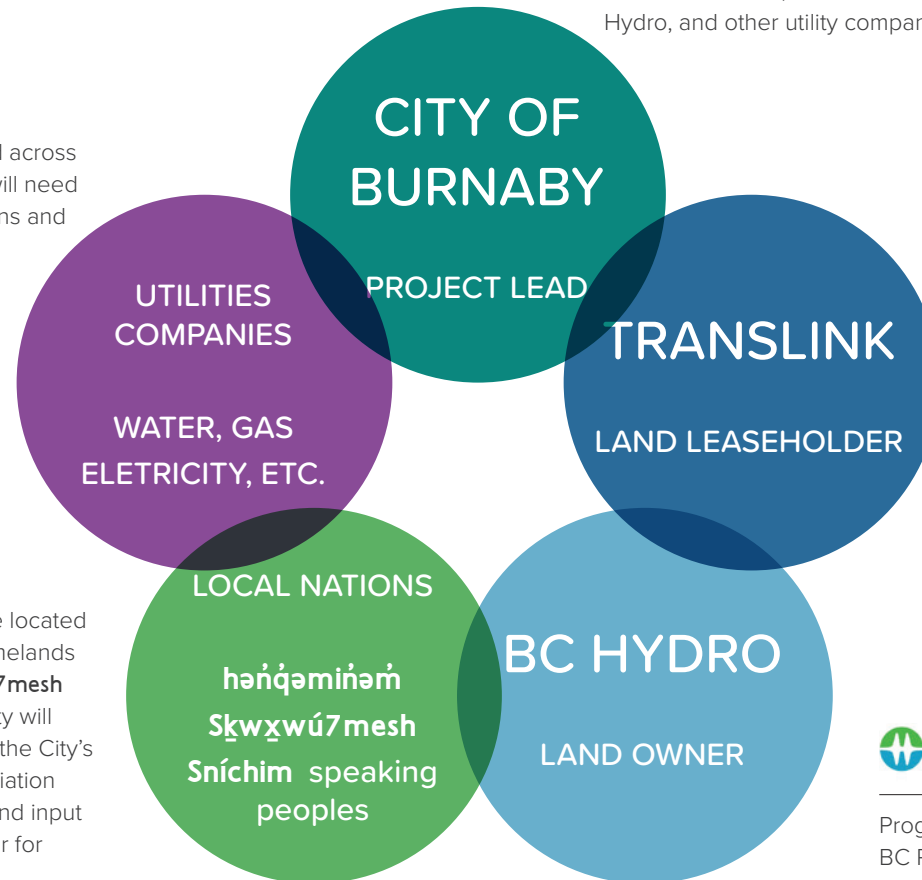
Implementation of the project (process and approvals) for the transformation of the corridor will need to continue as a collaborative effort between various key entities, seeking partnerships and continuous check in moments.

There are various utility lines spread across the corridor. All proposed designs will need to be coordinated with utility locations and respect maintenance requirements.

The BC Parkway corridor lands are located on the ancestral and unceded homelands of the **hən̓q̓əmiñəm** and **Skwxwú7mesh Sníchim** speaking peoples. The City will engage with the host Nations and the City's Indigenous Relations and Reconciliation Division throughout the process, and input received will be an important driver for future design work.



The City will lead public realm improvements as shown in the Framework Plan. The proposed concepts will require consultation with host Nations, coordination with and approval from TransLink, BC Hydro, and other utility companies with interest over the lands.



TransLink is the design lead for all BC Parkway trail system improvement projects. The proposed concepts will require TransLink's approval to ensure no conflict with its assets and operational requirements along the parkway corridor.



Programs and improvements within the BC Parkway corridor will require approval and land lease from BC Hydro.

6.6 COMMUNITY STEWARDSHIP

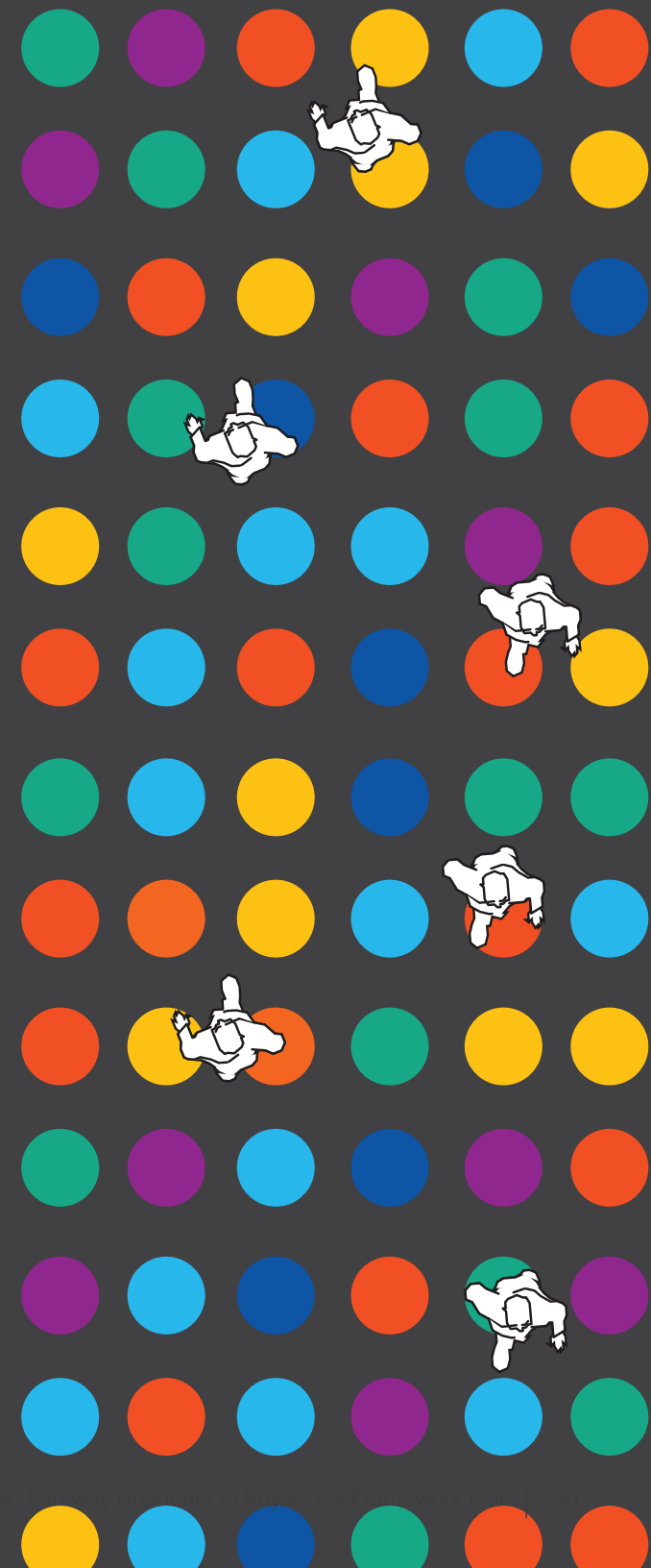
A project of this size and complexity will need strong community support in programming, maintenance and general stewardship of the spaces as a community asset. There are a number of facilities such as the youth centre or 55+ centre for seniors, as well as the nearby Maywood Community School and Neighbourhood House. In addition, there are less formalized groups of residents that meet for gardening and other activities such as yoga or dog walking. It will be critical for the City to seek out opportunities and set up incentive programs to encourage community led events or activities, such as temporary programs, invasive species removal, and planting of new trees and pollinator plant species.

6.7 GOVERNANCE

The implementation of the Framework Plan will be led by the City of Burnaby, in collaboration with other key partners at planning, design and construction stage. TransLink will lead Active transportation components such as improvements to the BC Parkway trail. To ensure the community aspirations for the corridor are met, future planning and design of the corridor will need to incorporate the Plan Vision, Guiding Principles and Design Guidelines in this plan.



APPENDIX A: SITE ANALYSIS



APPENDIX B: BRANDING PACKAGE

