



BC Parkway Enhancement Project (Burnaby)

What We Heard Report #2

January 2025

Contents

01	ENGAGEMENT OVERVIEW	2
02	WHAT WE HEARD: SURVEY AND OPEN HOUSES	3
03	WHAT WE HEARD: FROM SENIORS AND YOUTH	17
04	TAKEAWAYS	18
05	WHAT'S NEXT	20

01 Engagement Overview

WHAT WE ENGAGED ON

THE PROJECT

Burnaby's BC Parkway Enhancement Project seeks to create a network of active open spaces that together will form a dynamic linear park in the BC Parkway corridor from Boundary Road to the Royal Oak SkyTrain Station.

The project process for developing a Framework Plan involves two engagement rounds with the public and interested parties, building on the findings from the summer 2023 Parkway Alive survey. The second engagement round took place in October 2024 and is the subject of this summary report.

THE PURPOSE OF THIS REPORT

This report summarizes the outcomes from engagement with interested parties and the public. It highlights which communities we engaged with, how we engaged, and what we heard.

ROUND 2 ENGAGEMENT OBJECTIVES

This engagement round was the second opportunity for community members to learn about the BC Parkway Enhancement Project, with the main goal being to gather their thoughts on the draft Framework Plan.

HOW WE ENGAGED AND WITH WHO



COMMUNITY ONLINE SURVEY

Online questionnaire available on the project website.
[Open from September 19 to October 14, 2024]

222

SURVEY
RESPONDENTS



TWO PUBLIC POP-UP EVENTS

City staff, consultant team, and TransLink representatives were on hand to answer questions and provide information through a series of display boards.
[Hosted on October 5 at Bonsor Recreation Complex and on October 6 outside of Metrotown SkyTrain Station.]

100+

PARTICIPANTS



SENIOR AND YOUTH ENGAGEMENT

In-person drop-in sessions were hosted with activity stations to provide input into the process.
[Hosted on October 8 and 16, 2024 at Bonsor Recreation Complex.]

25

PARTICIPANTS

02 What We Heard: Survey and Open Houses

The following section summarizes the insights gained from the questions posed in the online survey and at the open house, regarding the draft Framework Plan for the parkway. Results have been grouped by character areas. Statistical results focus on survey data. Open House comments gathered verbally and on sticky notes were very similar and have been reflected in the summary takeaways for each area.

WHAT WE ASKED PARTICIPANTS

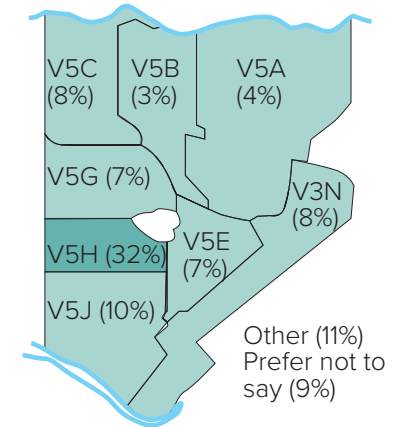
What are you most excited about for the future Parkway?

Did we miss anything?

WHO WE HEARD FROM

This map outlines participant distribution by postal code (the red line shows the Parkway corridor study area).

THE GREATEST PROPORTION OF SURVEY RESPONDENTS LIVE IN THE V5H POST CODE, WHICH IS WHERE THE MAJORITY OF THE PARKWAY IS LOCATED



Area 1 - Burnaby Gateway

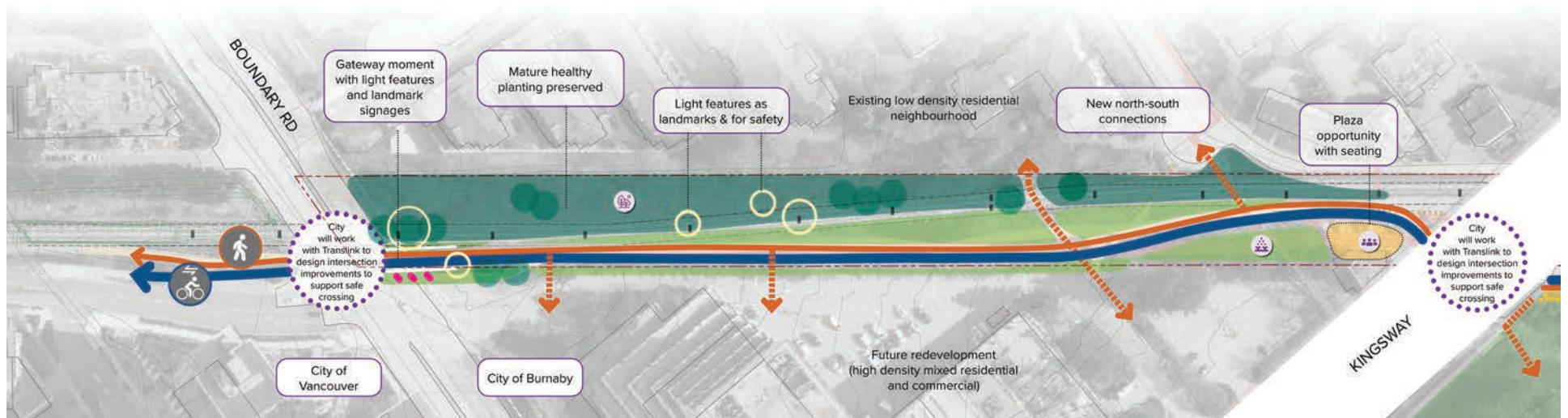
ENGAGEMENT MATERIAL



Existing view



Conceptual future view



Concept Plan

Area 1 - Burnaby Gateway

WHAT ARE YOU MOST EXCITED ABOUT FOR BURNABY GATEWAY? (69 total online survey responses)

Excitement Mentions

Concern or Suggestion Mentions

Improving the safety at road crossings and intersections

16

A separated cyclist and pedestrian pathway

10

Preserving and adding green space (green space, pollinator and native plants)

10

Improving the conditions of pathways for cyclists, pedestrians and multi-modal travel

10

General comments of support for the plans and proposed amenities

9

Preserving existing tree canopy and adding large shade trees

7

The addition of lighting

5

The connections (the larger parkway, north-south connections)

4

The addition of seating areas

2

Suggesting adding washroom facilities, water filling stations and outdoor exercise equipment

2

Desire to extend the parkway plans further

1

Concerns about maintenance, safety, and the unhoused population

2

Concerns about the City budget, coordination with TransLink

2

HIGHLIGHTS FROM THE OPEN HOUSES

- Happy about safety lighting improvements
- Excited about preservation and addition of native and pollinator planting
- Looking forward to seeing gateway features and art opportunity without spending too many dollars in comparison to a more prominent location such as Metrotown

Area 2 - Central Park

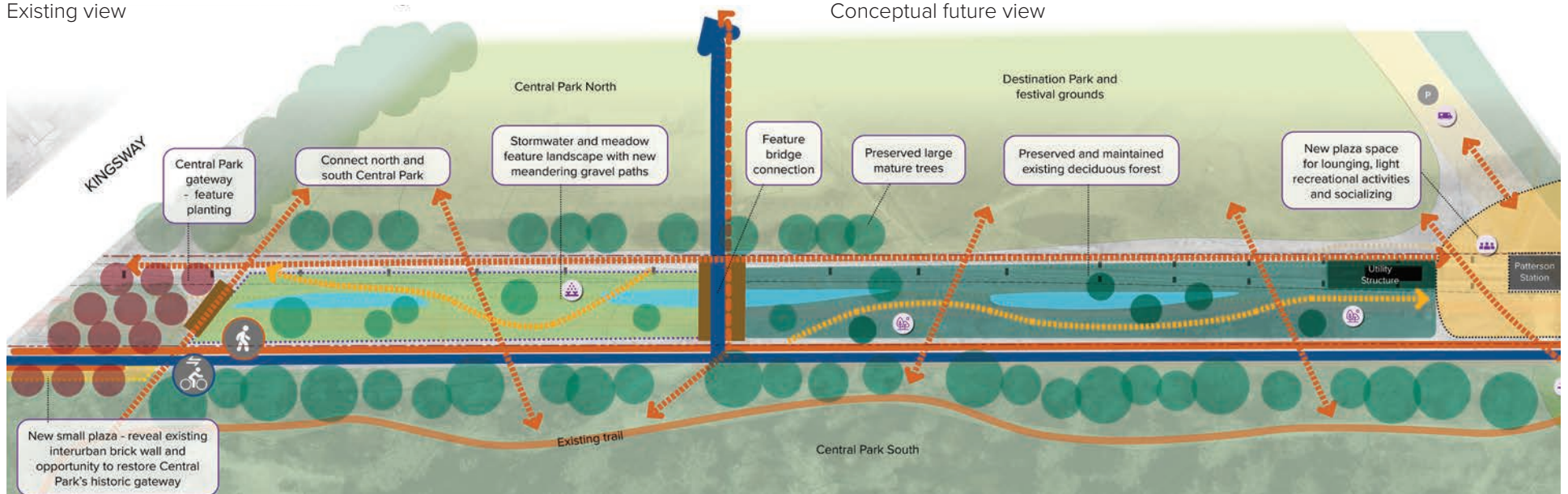
ENGAGEMENT MATERIAL



Existing view



Conceptual future view



Concept Plan

Area 2 - Central Park

WHAT ARE YOU MOST EXCITED ABOUT FOR CENTRAL PARK? (67 total online survey responses)

The connections (the larger parkway, north-south connections, pedestrian bridge, secondary pathways)

17

Stream restoration, stormwater management, ecosystem enhancement for wildlife

12

Improving the conditions of pathways for cyclists, pedestrians and multi-modal travel

9

General comments of support for the plans and proposed amenities

7

The addition of lighting, safety measures (SOS poles)

7

The addition of seating areas and small plaza

6

Preserving and adding green space (green space, pollinator and native plants)

5

Preserving existing tree canopy and adding large shade trees

5

Relocating the historic arch

2

Suggesting adding dog park to this zone instead

3

Suggesting washroom facilities, water filling stations, covered space, food trucks

3

Concerns about maintenance, safety, and the unhoused population

4

Excited about nothing

2

Excitement Mentions

Concern or Suggestion Mentions

HIGHLIGHTS FROM THE OPEN HOUSES

- Support for Kingsway crossing improvements
- Appreciation for the nature focused approach to the design of this area, and general enhancement of the native ecosystem
- Appreciation for bike lane diversion through Central Park north

Area 3 - Patterson East

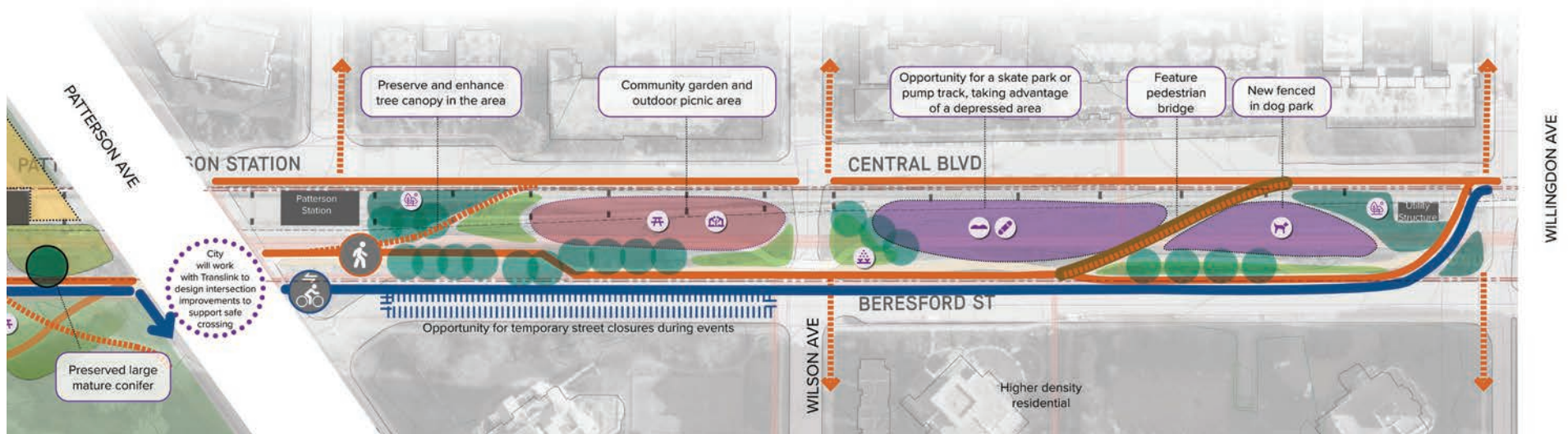
ENGAGEMENT MATERIAL



Existing view



Conceptual future view



Concept Plan

Area 3 - Patterson East

WHAT ARE YOU MOST EXCITED ABOUT FOR PATTERSON EAST? (72 total online survey responses)

Excitement Mentions

Concern or Suggestion Mentions

Dog park

13 in favour 2 against

A separated cyclist and pedestrian pathway

10

Pump track

8 in favour 6 against

Addition of community gardens

6

Preserving and adding green space (green space, pollinator and native plants)

6

Improving the conditions of pathways for cyclists, pedestrians and multi-modal travel

6

The addition of seating areas

6

General comments of support for the plans and proposed amenities

5

Preserving existing tree canopy and adding large shade trees

4

The connections (the larger parkway, north-south connections, Skytrain, pedestrian bridge)

4

Improving the safety at road crossings and intersections

3

Suggesting adding washroom facilities, water filling stations, covered space, lighting

5

Concerns about maintenance, noise, safety, pest and garbage control, the unhoused population

7

HIGHLIGHTS FROM THE OPEN HOUSES

- Lots of support for the dog park with a couple of opposing views
- Support for the community gardens
- Dislike for the skatepark and associated noise and aesthetic. Also it was mentioned that it is not needed in this area - a duplication of an already existing use along the parkway
- Mixed opinions about locating a pump track in the area, with a relatively even divide between like and dislike
- Concerns around the safety of the Nelson intersection

Area 4 - Metrotown SkyTrain Station

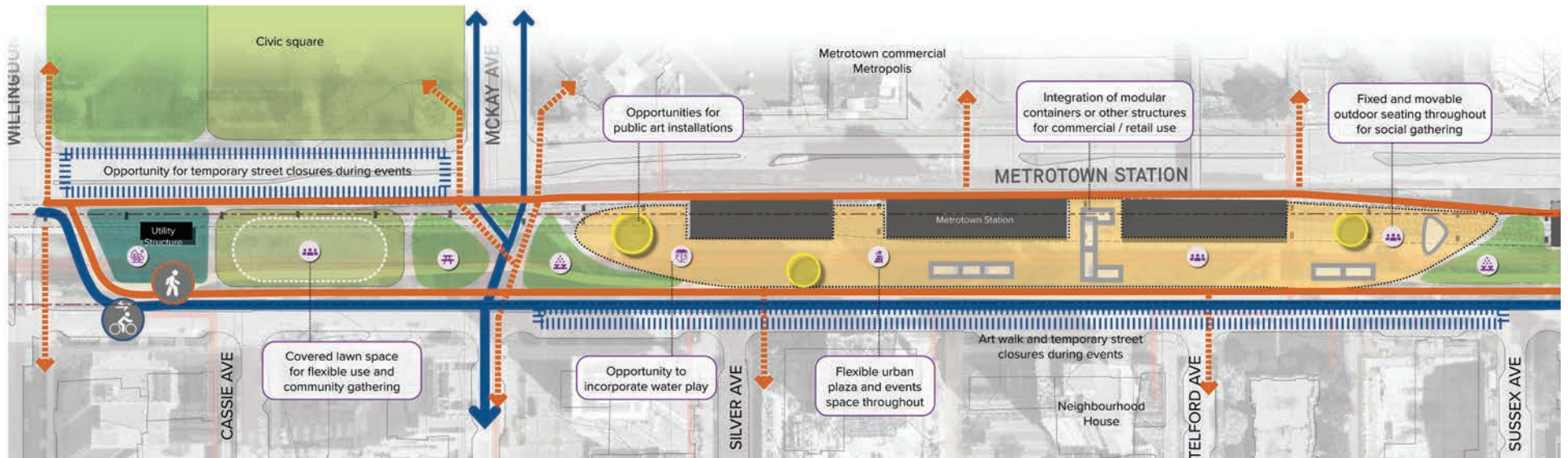
ENGAGEMENT MATERIAL



Existing view



Conceptual future view



Concept Plan

Area 4 - Metrotown SkyTrain Station

WHAT ARE YOU MOST EXCITED ABOUT FOR METROTOWN SKYTRAIN STATION? (78 total online survey responses)

Excitement Mentions

Concern or Suggestion Mentions

A separated cyclist and pedestrian pathway

14

General comments of support for the plans and proposed amenities

9

Improving the conditions of pathways for cyclists, pedestrians and multi-modal travel

8

The addition of gathering space, seating area

8

The retail market, food and shopping opportunities

7

The connections (the larger parkway, north-south connections, street closures)

6

The addition of public art, water feature

5

Covered space for shade, weather and climate protection

4

Improving the safety at road crossings and intersections

3

Preserving and adding green space (green space, pollinator and native plants)

3

Preserving existing tree canopy and adding large shade trees

2

Suggesting adding washroom facilities, water filling stations, sports equipment, lawn bowling

6

Concerns about City budget, safety, noise and the unhoused population

10

HIGHLIGHTS FROM THE OPEN HOUSES

- General excitement for this area of the plan and proposed activation amenities
- General support for the food and beverage add-ons, and shopping opportunities, as well as social space, public art and covered space
- People shared their enjoyment of the summer activities with suggestions to shift the location of ping pong tables to a location sheltered from wind
- Various comments about lingering drug users outside of the Metrotown SkyTrain Station and associated safety concerns

Area 5 - South of Bonsor

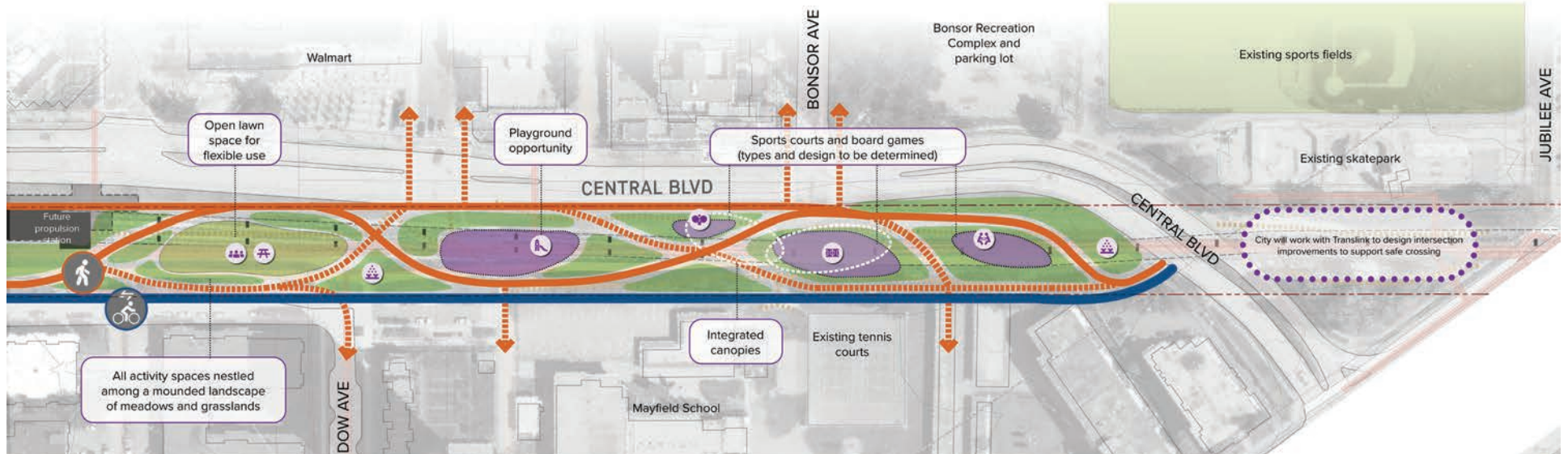
ENGAGEMENT MATERIAL



Existing view



Conceptual future view



Concept Plan

Area 5 - South of Bonsor

WHAT ARE YOU MOST EXCITED ABOUT FOR SOUTH OF BONSOR? (57 total online survey responses)

Excitement Mentions

Concern or Suggestion Mentions

Improving the safety at road crossings and intersections

11

Recreation activities

8

Improving the conditions of pathways for cyclists, pedestrians and multi-modal travel

7

A separated cyclist and pedestrian pathway

6

General comments of support for the plans and proposed amenities

6

Gathering spaces and seating areas

4

Canopies for shade, weather and climate protection

3

Preserving and adding green space (green space, pollinator and native plants)

3

Preserving existing tree canopy and adding large shade trees

1

Excited about nothing

3

Suggesting adding washroom facilities and water filling stations

2

Concerns about the unhoused population

1

HIGHLIGHTS FROM THE OPEN HOUSES

- Excitement for recreational activities and generally for the proposed plans
- Excitement for intersection improvements around Jubilee Avenue

Area 6 - Royal Oak SkyTrain Station

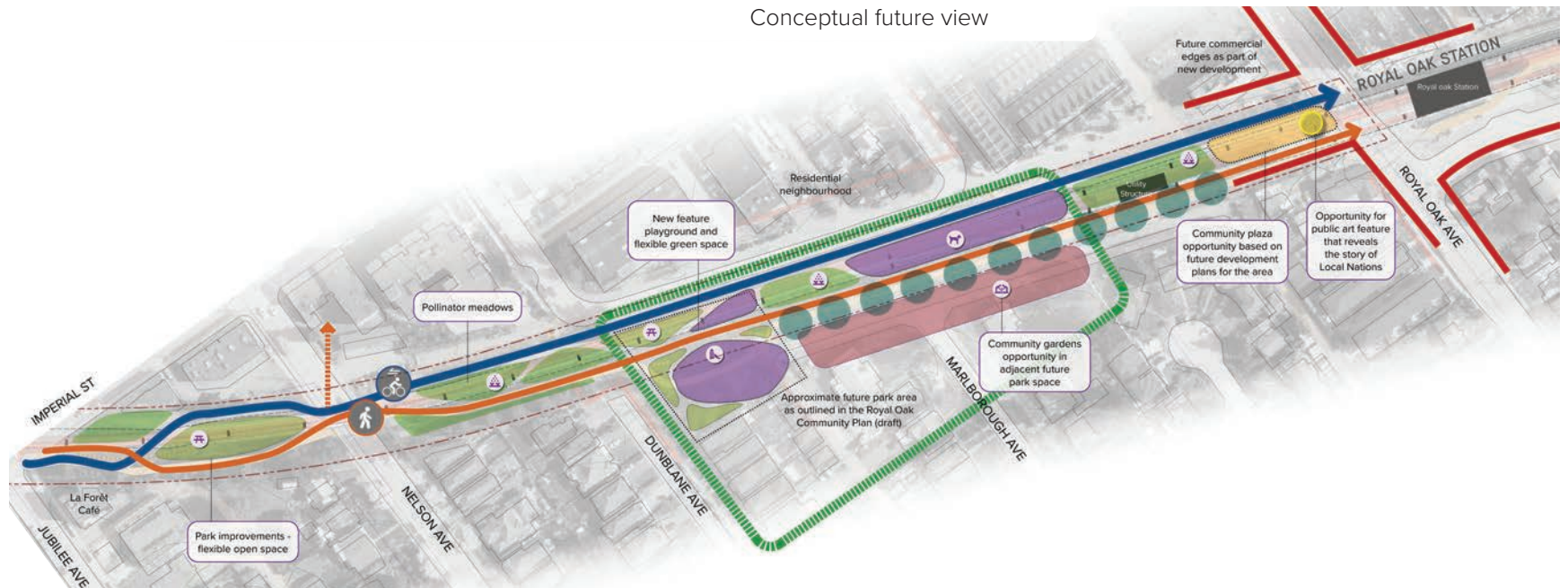
ENGAGEMENT MATERIAL



Existing view



Conceptual future view



Concept Plan

Area 6 - Royal Oak SkyTrain Station

WHAT ARE YOU MOST EXCITED ABOUT FOR ROYAL OAK SKYTRAIN STATION? (58 total online survey responses)

Excitement Mentions

Concern or Suggestion Mentions

Improving the conditions of pathways for cyclists, pedestrians and multi-modal travel

13

A separated cyclist and pedestrian pathway

11

Improving the safety at road crossings and intersections

7

Play areas, recreation and gathering space

7

General comments of support for the plans and proposed amenities

5

Preserving and adding green space (green space, pollinator and native plants)

5

Dog park

3

Community gardens

2

Preserving existing tree canopy and adding large shade trees

2

Public art, indigenous integration

2

Desire to extend the parkway plans to Edmonds SkyTrain Station, revamp Brewery District

3

Suggesting adding washroom facilities and water filling stations

2

Concerns about city budget, pests, safety, noise and the unhoused population

1

HIGHLIGHTS FROM THE OPEN HOUSES

- Appreciation for meadows and pollinator gardens
- Excitement for play areas and dog park

Overall Parkway - Question 2

DID WE MISS ANYTHING IN THE FRAMEWORK PLAN BASED ON PREVIOUS FEEDBACK YOU MAY HAVE PROVIDED TO US?

(138 total responses)

All of the listed items below will be considered for incorporation into the final Framework Plan for the parkway, either within individual area design proposals or as part of corridor-wide design guidelines that focus on the parkway as a whole. Key topics that will be covered include: amenities, human comfort, connectivity, planting strategy, placemaking, programming and wayfinding.

Top mentions of missed items or requests for embellishment of already proposed items

- More green space, shade trees, pollinators and native plants
- More commercial vendors, food vendors/trucks
- More in-depth consideration for accessibility, amenities for all demographics and abilities
- Signage, wayfinding and pavement markings
- Lighting and safety stations
- Increased sports and exercise opportunities
- Parking near amenities
- Weather protection
- Bike racks and repair stations
- Non-typical activities such as dance and parkour
- Washrooms and water fountains

Top mentions of overall concerns

- Safety of intersections and crossings
- Noise and graffiti
- General safety and security
- Improved maintenance and control over pests, garbage, general litter and litter from drug use
- Activity conflicts with commuter cyclists
- General questions around the high cost of implementing the entire parkway and how the budgeting will be phased

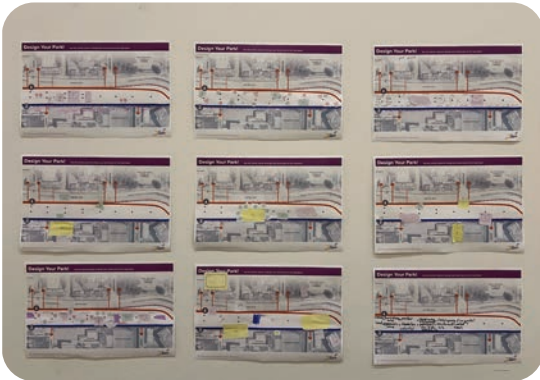
04 What We Heard: from Seniors and Youth



TARGETED ENGAGEMENT

Drop in open house events were hosted for each of youth and seniors populations in Burnaby, with more targeted interactive exercises that catered to their specific age group interests. An array of comments were collected through conversations and design activity outputs, showcased here.

(25 participants combined)



More trees

Covered space for
weather protection

Outdoor seating

Community
gardens

Pollinators, flowers,
and green space

Outdoor workout
equipment

Night lighting

Climbing
structures, beach
volleyball

The following section summarizes the key takeaways for each area of the Framework Plan, based on open house event conversations, targeted engagement outcomes, and results from the online survey.



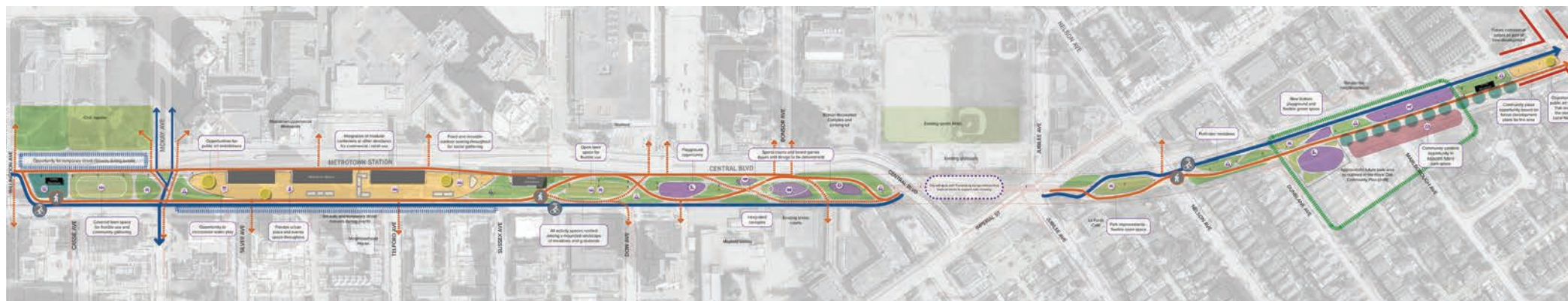
- Overall support for the proposed plan
- No significant changes to the plan

CENTRAL PARK

- Overall support for the proposed plan
- Be more intentional about enhancing native vegetation, biodiversity and habitat corridors, as well as highlighting stewardship initiatives

**PATTERSON
EAST**

- Consider removing the skate park, and replacing it with a more desirable/ needed activity or enhanced planting
- Potential to support a larger dog park or community garden area which are both supported here by the community



METROTOWN SKYTRAIN STATION

- Overall support for the proposed plan
- Include more details on amenities and activities to support an active heart in Metrotown
- Include more concrete directives around safety and security management

SOUTH OF BONSOR

- Overall support for the proposed plan
- Potential to increase active sports and games related footprint, without compromising garden areas
- Potential to shift away from a playground as there are play spaces in the neighbourhood already

ROYAL OAK SKYTRAIN STATION

- Overall support for the proposed plan
- Dog park use to be reconsidered based on better opportunity areas nearby with greater square footage

06 What's Next



The results from this second round of engagement will be used towards the development of:

1. **A final concept plan** that outlines the programmatic layout of open space enhancements for the Parkway; and
2. **Corridor-wide recommendations and guidelines** to support environmental, safety, accessibility, cultural and social goals for the Parkway.

We will reach back out to the community in spring of 2025 to share a Draft Framework Plan document for the corridor. Implementation of some of the concept ideas will start later this year.

You can visit our project website for further updates on project progress: **Burnaby.ca/BCParkway**.

