

Seal

NSDA
ARCHITECTS

201-134 Abbott St
Vancouver, BC
Canada V6B 2K4
T 604.669.1926
F 604.683.2241
info@nsda.bc.ca
www.nsda.bc.ca

Copyright Reserved. This plan and design is and at all times remains
the exclusive property of NSDA Architects and cannot be used
without the architects' written consent.

Project

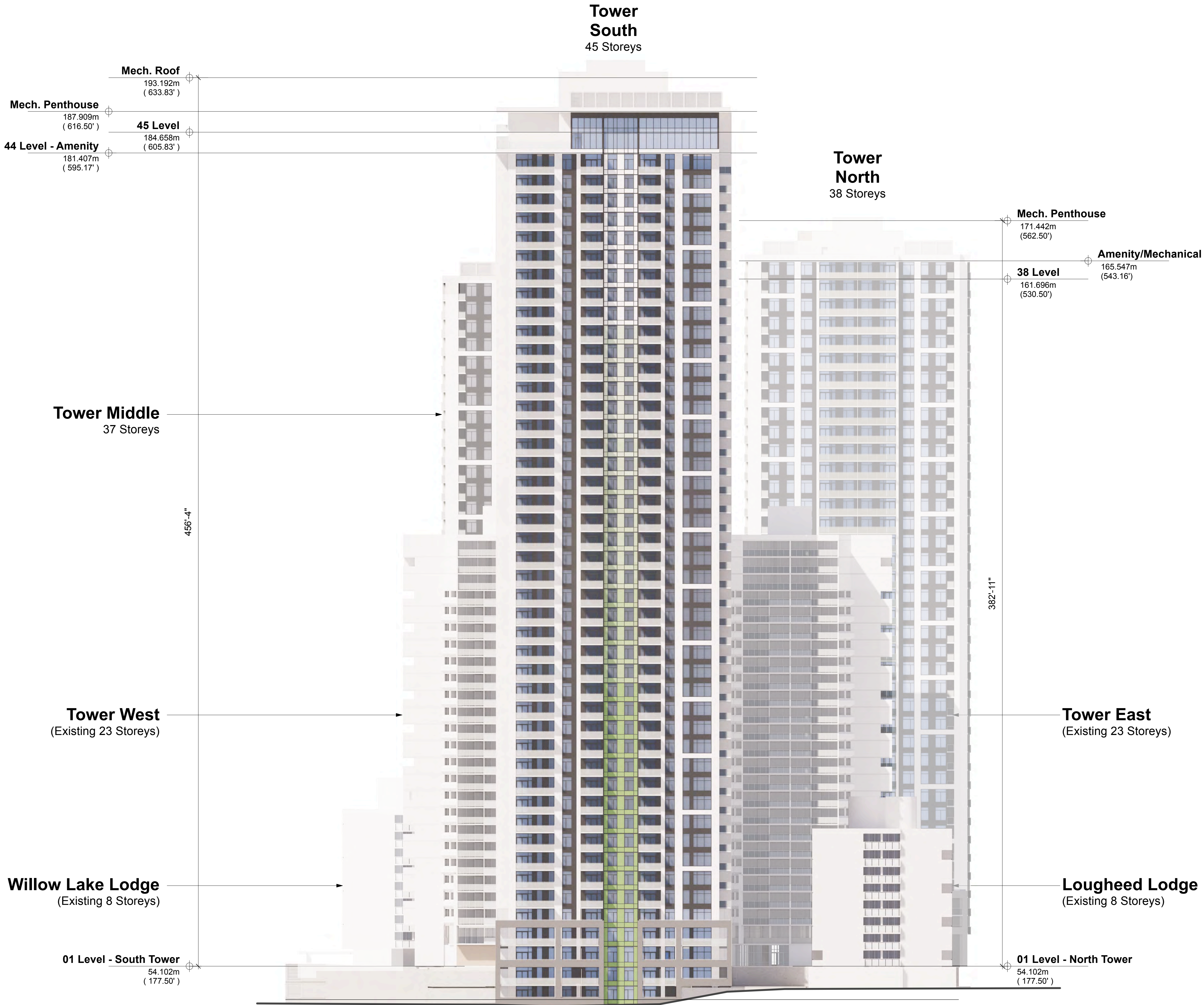
Sheet Title
Development Elevation - East

Project Number

Scale
1"=25' (1:300)

Sheet Number

A-301



Seal

NSDA
ARCHITECTS

201-134 Abbott St
Vancouver BC
Canada V6B 2K4
T 604.669.1926
F 604.683.2241
info@nsda.bc.ca
www.nsda.bc.ca

Copyright Reserved. This plan and design is and at all times remains the exclusive property of NSDA Architects and cannot be used without the architects' written consent.

Project

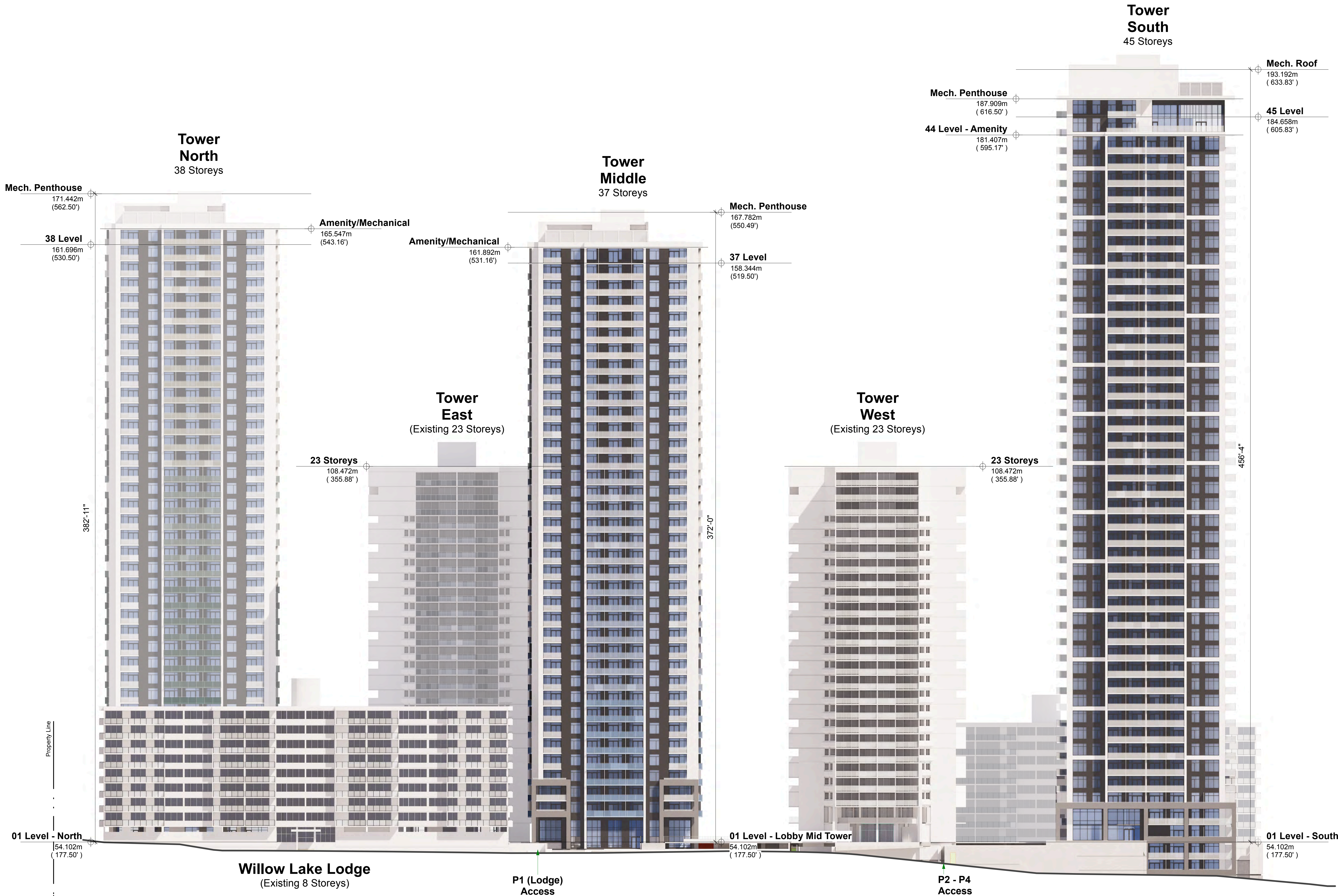
Sheet Title
Development Elevation - South

Project Number

Scale
1"=25' (1:300)

Sheet Number

A-302



NSDA
ARCHITECTS

201-134 Abbott St
Vancouver, BC
Canada V6B 2K4
T 604.669.1926
F 604.683.2241
info@nsda.bc.ca
www.nsda.bc.ca

Copyright Reserved. This plan and design is and at all times remains the exclusive property of NSDA Architects and cannot be used without the architects' written consent.

Project

Sheet Title
Development Elevation - West

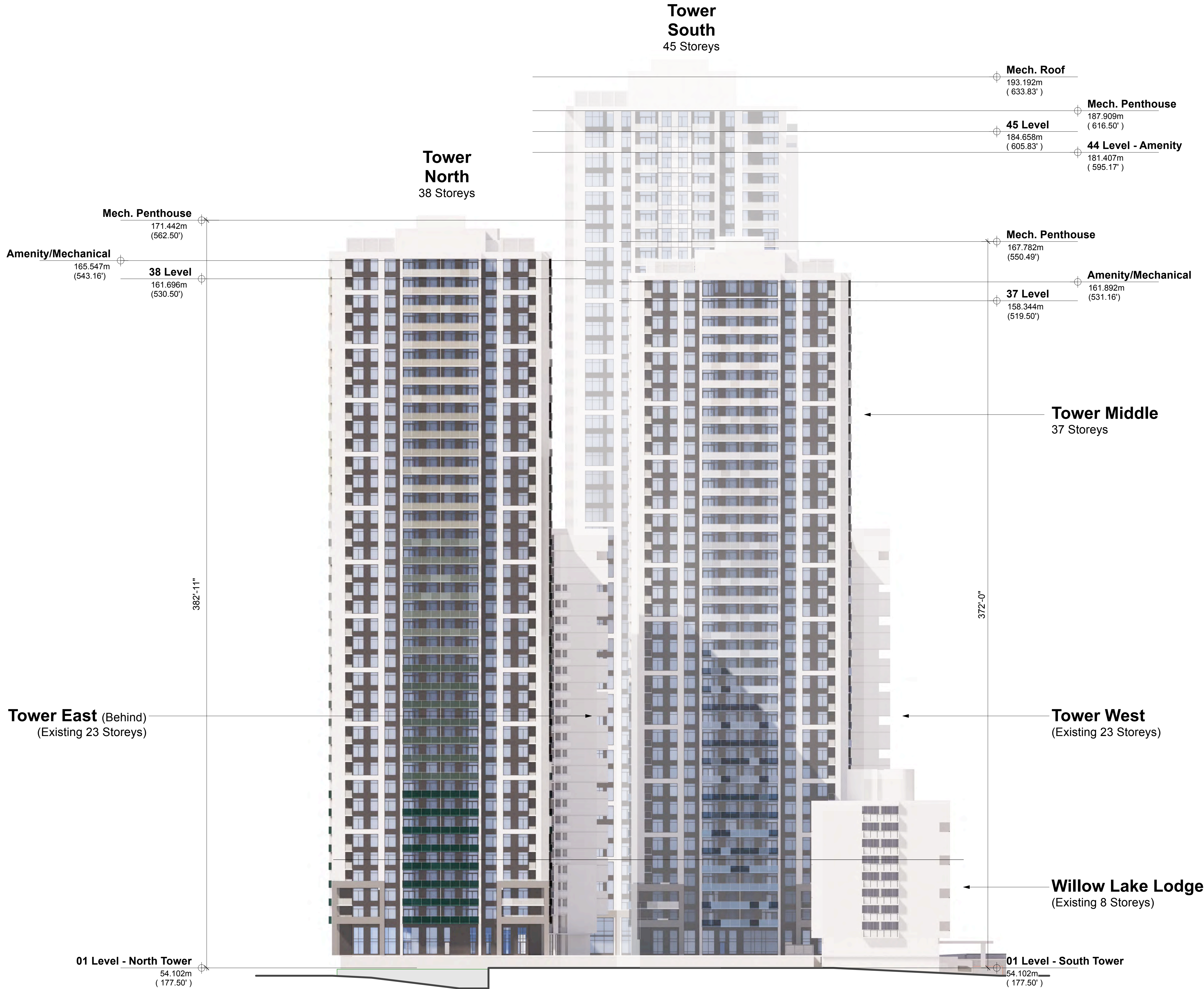
Project Number

Scale
1"=25' (1:300)

Sheet Number

A-303

Attachment #1 - Elevations



Seal

NSDA
ARCHITECTS

201-134 Abbott St
Vancouver, BC
Canada V6B 2K4
T 604.669.1926
F 604.683.2241
info@nsda.bc.ca
www.nsda.bc.ca

Copyright Reserved. This plan and design is and at all times remains
the exclusive property of NSDA Architects and cannot be used
without the architects' written consent.

Project

Sheet Title
Development Elevation - North

Project Number

Scale
1"=25' (1:300)

Sheet Number

A-304

**Tower
South**
45 Storeys

Mech. Penthouse

187.909m
(616.50')

44 Level - Amenity

181.407m
(595.17')

Mech. Roof

193.192m
(633.83')

45 Level

184.658m
(605.83')

**Tower
North**
38 Storeys

Mech. Penthouse

171.442m
(562.50')

38 Level

161.696m
(530.50')

Amenity/Mechanical

165.547m
(543.16')

**Tower
East**
(Existing 23 Storeys)

23 Storeys

115.968m
(380.47')

456'-5"

382'-11"

Property Line

01 Level - North

54.082m
(177.43')

01 Level - South

54.082m
(177.43')

P1 Parking Level

Ramp

P1 Parking Level

P1 Parking Level

P1 Parking Level

P2 Parking Level

Ramp

P2 Parking Level

P2 Parking Level

P2 Parking Level

P3 Parking Level

Ramp

P3 Parking Level

P3 Parking Level

P3 Parking Level

P4 Parking Level

Ramp

P4 Parking Level

P4 Parking Level

P5 Parking Level

P5 Parking Level



1 South Tower - North Elevation
Scale: 1:300



2 South Tower - East Elevation
Scale: 1:300



3 South Tower - South Elevation
Scale: 1:300



4 South Tower - West Elevation
Scale: 1:300

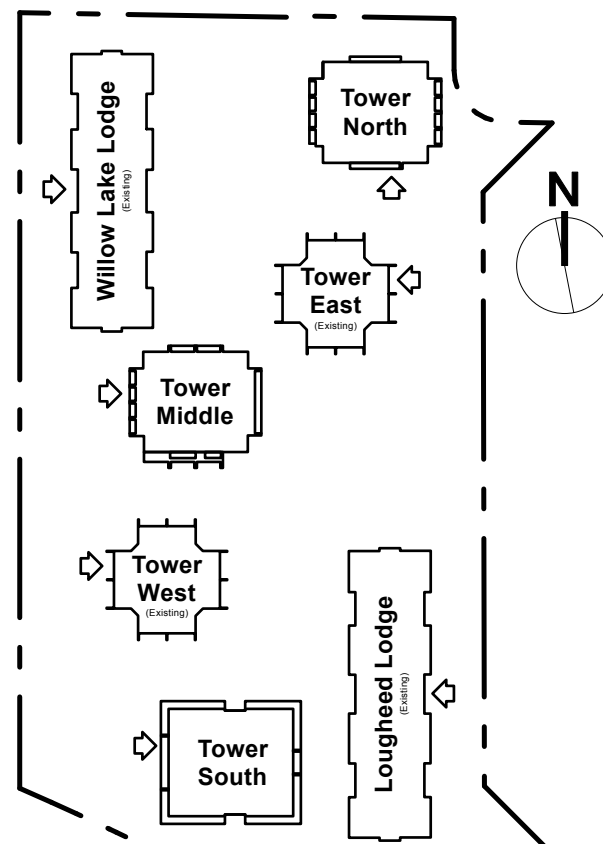
Materials Legend

Note: Not all materials are present in the building(s) on this sheet.

- (M1) Textured Panel
- (M2) Window Wall Textured Metal Panel - Charcoal
- (M3) Window Wall Raised Metal Panel - White
- (M4) Mechanical Screening
- (M5) Amenity / Lobby Curtain Wall Glass
- (M6) Window Wall Unit Vision Glass and Aluminum Frame
- (M7) Metal Panel at Fins
- (M8) Window Wall Spandrel Glass - Forest (South Tower) and Aluminum Frame
- (M9) Privacy Glass
- (M10) Balcony Glass Guard - Tinted
- (M11) Balcony Glass Guard - Air (Middle Tower)
- (M12) Balcony Glass Guard - Land (North Tower)
- (M13) Balcony Traffic Coating
- (M14) Raised Metal Panel - White

- Mech. Roof**
193.192m (633.83')
- Mech. Penthouse**
187.909m (616.50')
- 45 Level**
184.658m (605.83')
- 44 Level - Amenity**
181.407m (595.17')
- 43 Level**
178.156m (584.50')
- 42 Level**
175.209m (574.83')
- 41 Level**
172.263m (565.17')
- 40 Level**
169.316m (555.50')
- 39 Level**
166.370m (545.83')
- 38 Level**
163.424m (536.17')
- 37 Level**
160.477m (526.50')
- 36 Level**
157.531m (516.83')
- 35 Level**
154.584m (507.17')
- 34 Level**
151.638m (497.50')
- 33 Level**
148.692m (487.83')
- 32 Level**
145.745m (478.17')
- 31 Level**
142.799m (468.50')
- 30 Level**
139.852m (458.83')
- 29 Level**
136.906m (449.17')
- 28 Level**
133.960m (439.50')
- 27 Level**
131.013m (429.83')
- 26 Level**
128.067m (420.17')
- 25 Level**
125.120m (410.50')
- 24 Level**
122.174m (400.83')
- 23 Level**
119.228m (391.17')
- 22 Level**
116.281m (381.50')
- 21 Level**
113.335m (371.83')
- 20 Level**
110.388m (362.17')
- 19 Level**
107.442m (352.50')
- 18 Level**
104.496m (342.83')
- 17 Level**
101.549m (333.17')
- 16 Level**
98.603m (323.50')
- 15 Level**
95.656m (313.83')
- 14 Level**
92.710m (304.17')
- 13 Level**
89.764m (294.50')
- 12 Level**
86.817m (284.83')
- 11 Level**
83.871m (275.17')
- 10 Level**
80.924m (265.50')
- 09 Level**
77.978m (255.83')
- 08 Level**
75.032m (246.17')
- 07 Level**
72.085m (236.50')
- 06 Level**
69.139m (226.83')
- 05 Level**
66.192m (217.17')
- 04 Level**
63.246m (207.50')
- 03 Level**
60.300m (197.83')
- 02 Level**
57.353m (188.17')
- 01 Level**
54.102m (177.50')
- P1 Elev.Lobby**
51.156m (167.83')
- P2 Elev.Lobby**
48.209m (158.17')
- P3 Elev.Lobby**
45.415m (149.00')
- P4 Elev.Lobby**
42.469m (139.33')

Keyplan



Date	Issue / Revisions
13 Oct 2023	Issued for Review
05 Dec 2023	Re-issued for Suitable Plan of Development
2024-12-24	Re-issued for Suitable Plan of Development
2025-03-05	Re-issued for Suitable Plan of Development
2025-05-27	For Review
2025-05-30	Re-issued for Suitable Plan of Development
2025-06-20	Re-issued for Suitable Plan of Development

Seal

NSDA
ARCHITECTS

201-134 Abbott St
Vancouver, BC
Canada V6B 2K4
T 604.669.1926
F 604.683.2241
info@nsda.bc.ca
www.nsda.bc.ca

Copyright Reserved. This plan and design is and at all times remains the exclusive property of NSDA Architects and cannot be used without the architects' written consent.

Project

Sheet Title
South Tower Elevations

Project Number

Scale
1"=25'

Sheet Number

A-320

Attachment #1 - Elevations



1 Middle Tower - North Elevation
Scale: 1:300



2 Middle Tower - East Elevation
Scale: 1:300



3 Middle Tower - South Elevation
Scale: 1:300



4 Middle Tower - West Elevation
Scale: 1:300

Note: Not all materials are present in the building(s) on this sheet.

- M1 Textured Panel
- M2 Window Wall Textured Metal Panel - Charcoal
- M3 Window Wall Raised Metal Panel - White
- M4 Mechanical Screening
- M5 Amenity / Lobby Curtain Wall Glass
- M6 Window Wall Unit Vision Glass and Aluminum Frame
- M7 Metal Panel at Fins
- M8 Window Wall Spandrel Glass - Forest (South Tower) and Aluminum Frame
- M9 Privacy Glass
- M10 Balcony Glass Guard - Tinted
- M11 Balcony Glass Guard - Air (Middle Tower)
- M12 Balcony Glass Guard - Land (North Tower)
- M13 Balcony Traffic Coating

Mech. Penthouse
167.792m (550.50')

Amenity/Mechanical
161.900m (531.17')

37 Level
158.344m (519.50')

36 Level
155.499m (510.17')

35 Level
152.654m (500.83')

34 Level
149.809m (491.50')

33 Level
146.964m (482.17')

32 Level
144.120m (472.83')

31 Level
141.275m (463.50')

30 Level
138.430m (454.17')

29 Level
135.585m (444.83')

28 Level
132.740m (435.50')

27 Level
129.896m (426.17')

26 Level
127.051m (416.83')

25 Level
124.206m (407.50')

24 Level
121.361m (398.17')

23 Level
118.516m (388.83')

22 Level
115.672m (379.50')

21 Level
112.827m (370.17')

20 Level
109.982m (360.83')

19 Level
107.137m (351.50')

18 Level
104.292m (342.17')

17 Level
101.448m (332.83')

16 Level
98.603m (323.50')

15 Level
95.758m (314.17')

14 Level
92.913m (304.83')

13 Level
90.068m (295.50')

12 Level
87.224m (286.17')

11 Level
84.379m (276.83')

10 Level
81.534m (267.50')

09 Level
78.689m (258.17')

08 Level
75.844m (248.83')

07 Level
73.000m (239.50')

06 Level
70.155m (230.17')

05 Level
67.310m (220.83')

04 Level
64.465m (211.50')

03 Level
61.620m (202.17')

02 Level
58.776m (192.83')

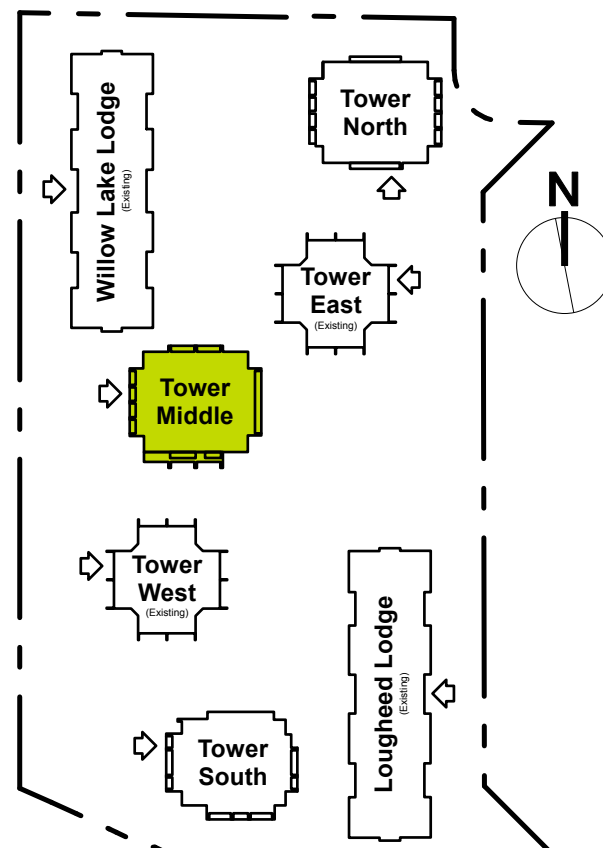
01 Level
54.102m (177.50')

P1 Elev.Lobby
50.927m (167.08')

P2 Elev.Lobby
48.108m (157.83')

P3 Elev.Lobby
45.263m (148.50')

Keyplan



Date
13 Oct 2023
05 Dec 2023
2024-12-24
2025-03-05
2025-05-30
2025-06-20

Issue / Revisions
Issued for Review
Re-issued for Suitable Plan of Development
Re-issued for Suitable Plan of Development
Re-issued for Suitable Plan of Development
Re-issued for Suitable Plan of Development

Seal

NSDA
ARCHITECTS

201-134 Abbott St
Vancouver, BC
Canada V6B 2K4

T 604.669.1926
F 604.683.2241

info@nsda.bc.ca
www.nsda.bc.ca

Copyright Reserved. This plan and design is and at all times remains
the exclusive property of NSDA Architects and cannot be used
without the architects' written consent.

Project

Sheet Title

Middle Tower Elevations

Project Number

Scale
1"=25' (1:300)

Sheet Number

A-330

Attachment #1 - Elevations

Note: Not all materials are present in the building(s) on this sheet.

- Textured Panel
- Window Wall Textured Metal Panel - Charcoal
- Window Wall Raised Metal Panel - White
- Mechanical Screening
- Amenity / Lobby Curtain Wall Glass
- Window Wall Unit Vision Glass and Aluminum Frame
- Metal Panel at Fins
- Window Wall Spandrel Glass - Forest (South Tower) and Aluminum Frame
- Privacy Glass
- Balcony Glass Guard - Tinted
- Balcony Glass Guard - Air (Middle Tower)
- Balcony Glass Guard - Land (North Tower)
- Balcony Traffic Coating

Date	Issue / Revisions
13 Oct 2023	Issued for Review
05 Dec 2023	Re-issued for Suitable Plan of Development
2024-12-24	Re-issued for Suitable Plan of Development
2025-03-05	Re-issued for Suitable Plan of Development
2025-05-27	Issue For Review
2025-05-30	Re-issued for Suitable Plan of Development
2025-06-20	Re-issued for Suitable Plan of Development



1 North Tower - North Elevation
Scale: 1:300



2 North Tower - East Elevation
Scale: 1:300

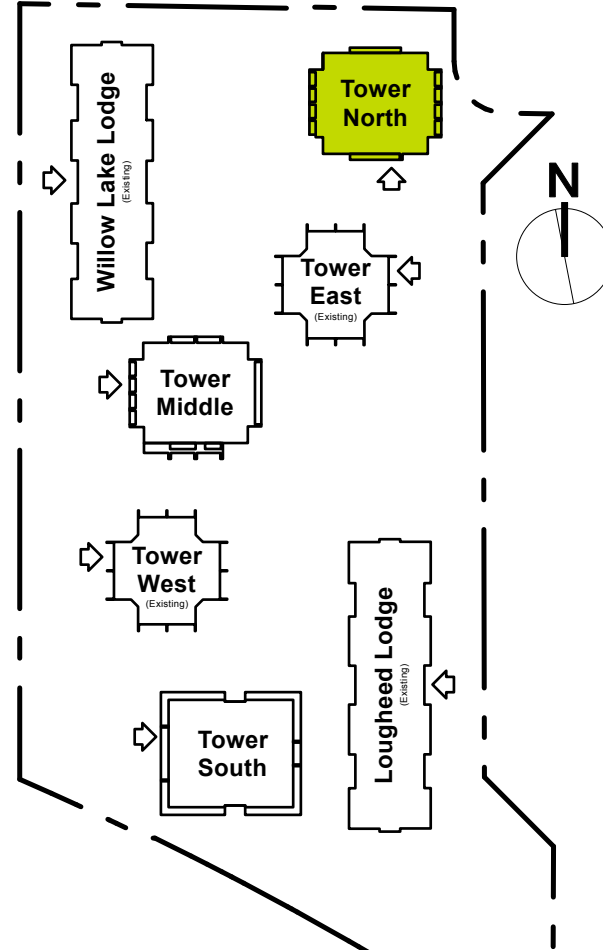


3 North Tower - South Elevation
Scale: 1:300



4 North Tower - West Elevation
Scale: 1:300

Keyplan



Seal

NSDA
ARCHITECTS

201-134 Abbott St
Vancouver BC
Canada V6B 2K4
T 604.669.1926
F 604.683.2241
info@nsda.bc.ca
www.nsda.bc.ca

Copyright Reserved. This plan and design is and at all times remains
the exclusive property of NSDA Architects and cannot be used
without the architect's written consent.

Project
LOUGHEED VILLAGE

Sheet Title
North Tower Elevations

Project Number

Scale
1"=25'

Sheet Number

A-340

Attachment #1 - Elevations