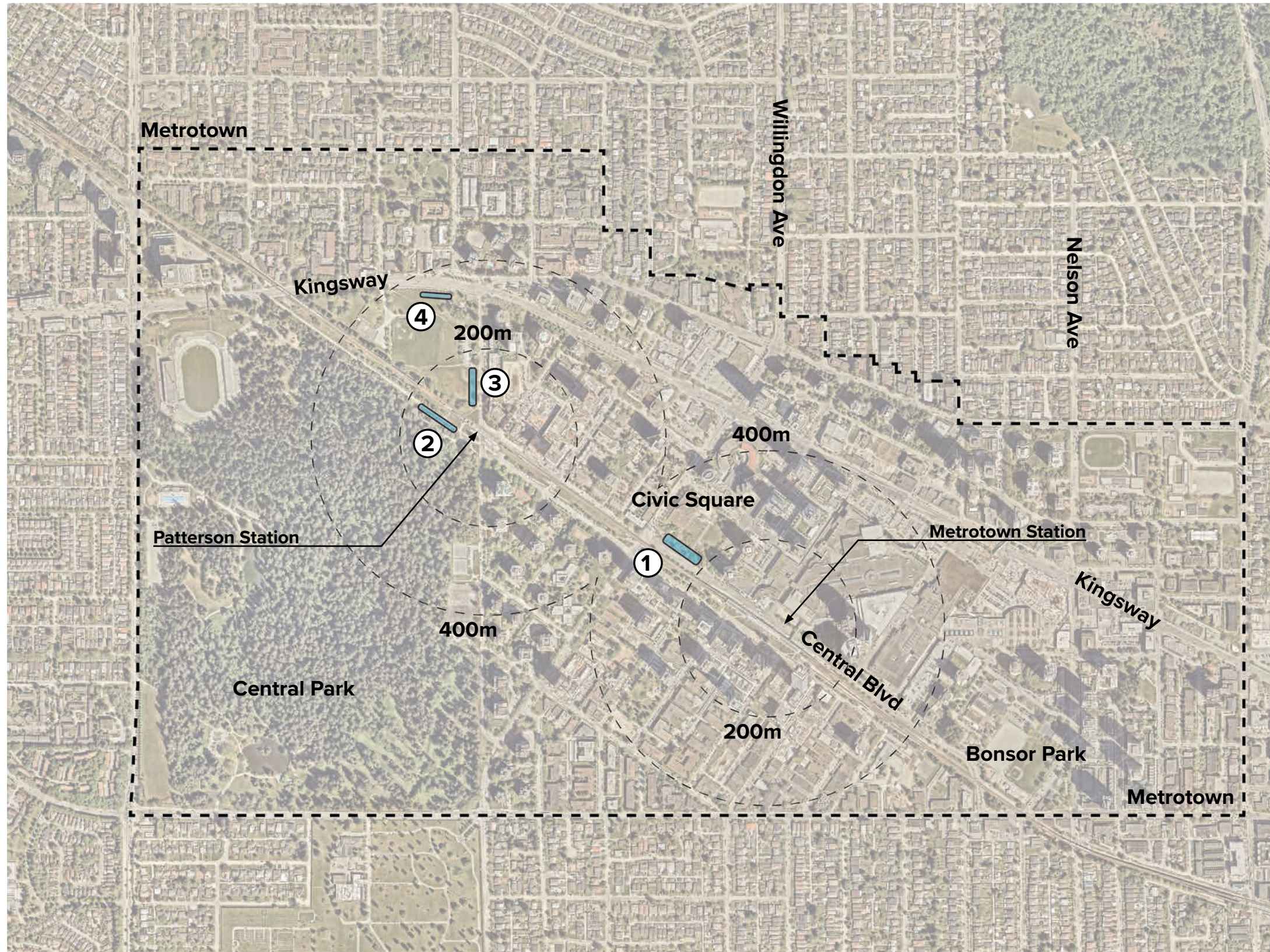


Burnaby Landmark Sign Potential Locations



- ① Civic Square - Central Blvd
- ② Central Park - BC Parkway
- ③ Central Park - North Triangle
- ④ Central Park - Kingsway

Burnaby Landmark Sign Civic Square



①

Civic Square

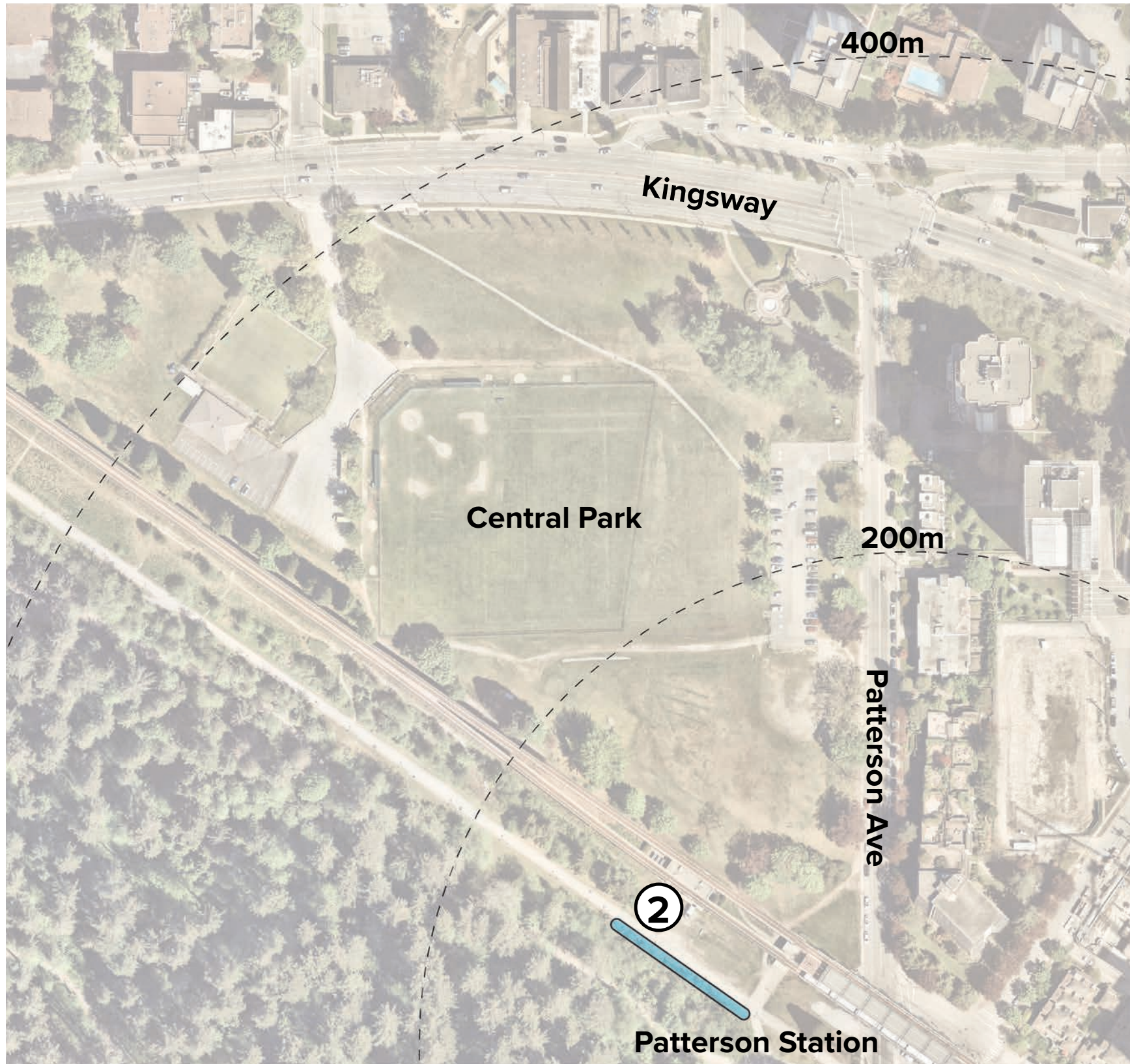
- Power Access - Yes
- Visible from SkyTrain - Yes
- Walkable from SkyTrain - Yes
- Visible from Roadway - Yes
- CoB Park Location - No - CoB Open Space maintained by Parks

A future Burnaby landmark sign could be placed in multiple locations in Civic Square along the Central Boulevard frontage. The most prominent location is the lawn behind the existing flag poles along Central Boulevard. It is a central location in Metrotown, with a beautiful backdrop and buffer from the roadway that provides an ideal location for a Burnaby landmark sign. This location requires relocating the flag poles and Civic Square dedication plaque to a new location in the public space. Alternative locations include the lawns behind the Central Boulevard hedges.



Burnaby Landmark Sign

Central Park - Parkway



②

Central Park - BC Parkway

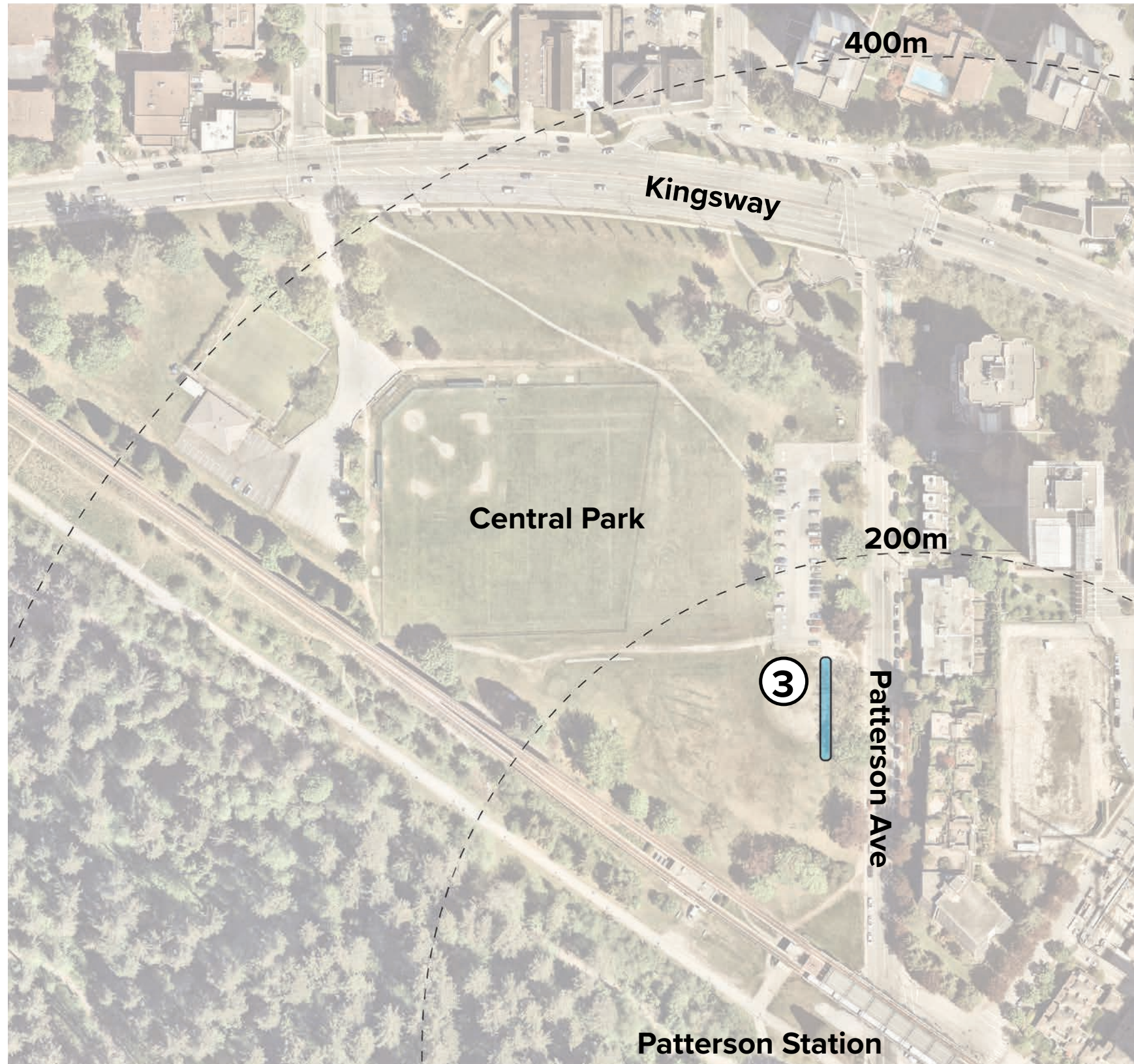
- Power Access - Yes
- Visible from SkyTrain - Yes
- Walkable from SkyTrain - Yes
- Visible from Roadway - Depends on final location decision
- CoB Park Location - Yes

A future Burnaby landmark sign could be placed in a few locations along the BC Parkway in Central Park. Central Park is a regional destination park with a large draw, it flanks the western edge of Metrotown and is directly adjacent to Patterson SkyTrain Station. The City owns a property to the south of the SkyTrain which has many alcoves in the existing foliage and trees that allows a large sign to be installed on the south side of the existing pathway. The existing foliage would create a good backdrop for a sign. The location is highly visible and walkable from the SkyTrain.



Burnaby Landmark Sign

Central Park - North Triangle



- ③ Central Park - North Triangle
- Power Access - Yes
- Visible from SkyTrain - Yes
- Walkable from SkyTrain - Yes
- Visible from Roadway - Yes
- CoB Park Location - Yes

A future Burnaby landmark sign could be placed in the Central Park North Triangle along Patterson Avenue. This location is highly visible and walkable from the SkyTrain. The location is quiet and inviting, which provides an ideal location for tourists and park users to gather. If a sign were placed here it would need to be considered in respect to future Central Park Masterplan and development initiatives such as the Central Park Destination Playground.



Burnaby Landmark Sign Central Park - Kingsway



④

Central Park - Kingsway

- Power Access - Yes
- Visible from SkyTrain - Depending on final location
- Walkable from SkyTrain - Yes
- Visible from Roadway - Yes
- CoB Park Location - Yes

A future Burnaby landmark sign could be placed in the Central Park North Triangle along Kingsway. This location is highly visible and walkable from the SkyTrain and Kingsway. Kingsway is a major City entry and would provide a prominent location for visitors. The sign could act as a gateway sign for the city and the backdrop of Central Park will provide a good photo opportunities. One consideration is Kingsway is a busy and loud location and may not be as inviting as other locations for pedestrians. If a sign were placed here it would need to be considered in respect to future Central Park Masterplan and development initiatives such as the Central Park Destination Playground.

