

MATERIAL LEGEND:

WS-1	WINDOW WALL SYSTEM WITH ALUMINUM FRAME POWDERED-COATED WHITE TO MATCH ACP-1, GLASS HANDRAIL
WS-2	WINDOW WALL SYSTEM WITH ALUMINUM FRAME POWDERED-COATED GREY TO MATCH ACP-3, GLASS HANDRAIL
WS-3	DOUBLE-GLAZED CURTAIN WALL SYSTEM WITH SPANDREL PANELS
WS-4	VISION GLASS STOREFRONT FACADE SYSTEM
WS-5	WINDOW WALL SYSTEM WITH SPANDREL
WS-6	WINDOW WALL SYSTEM WITH ACP-2 PANELS WALL SYSTEM WITH SPANDREL PANELS
ACP-1	ALUMINUM COMPOSITE PANEL - WHITE
ACP-2	ALUMINUM COMPOSITE PANEL - ANODIZED BRONZE
ACP-3	ALUMINUM COMPOSITE PANEL - GREY
AL-1	ALUMINUM METAL PANEL FIN- WHITE
LV-1	METAL LOUVER SYSTEM - WHITE
LV-2	METAL LOUVER SYSTEM - GREY
SP-1	STONE-TEXTURED PAINT
SP-2	STONE TILE

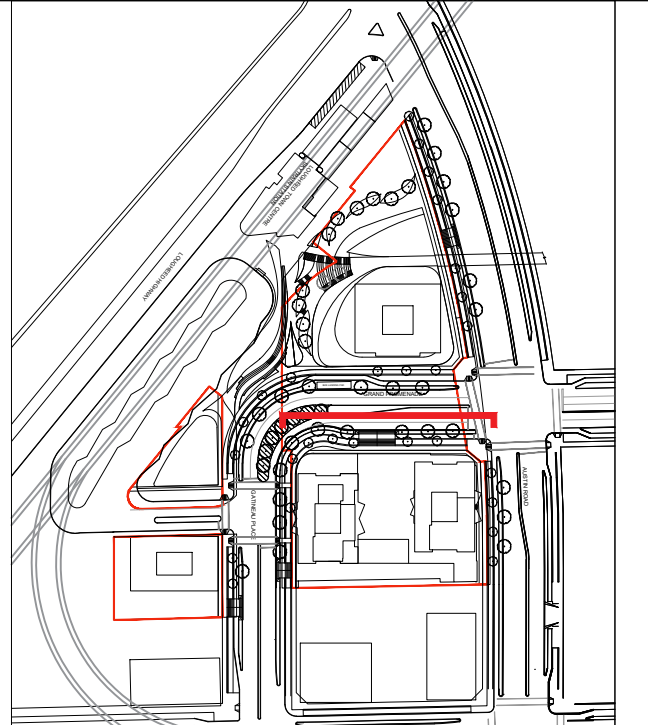
Attachment #1 - Elevations

CLIENT:	PINNACLE INTERNATIONAL V48 2/11, February 31 V48 2/16, 2026
SITE:	LOUGHHEAD BURNABY BC
TITLE:	PHASE 1 WEST ELEVATION
SCALE:	AT 2/3"=1'-0"
PROJECT NO.:	18001.80
DRAWING NO.:	A5.1.1
DATE:	2026.01.12
DESIGNED BY:	AL
CHECKED BY:	KK
REVISION:	3

REV#	DESCRIPTION	DATE
1	ISSUED FOR REZONING SUBMISSION	2026.01.12
2	ISSUED FOR REZONING SUBMISSION	2026.01.20
3	ISSUED FOR REZONING SUBMISSION	2026.01.20

STATUS: REZONING APPLICATION

JYOM Architecture
3378 Cambie Street,
Vancouver, BC V6H 2L2
604-876-2222
www.jyomarchitects.com



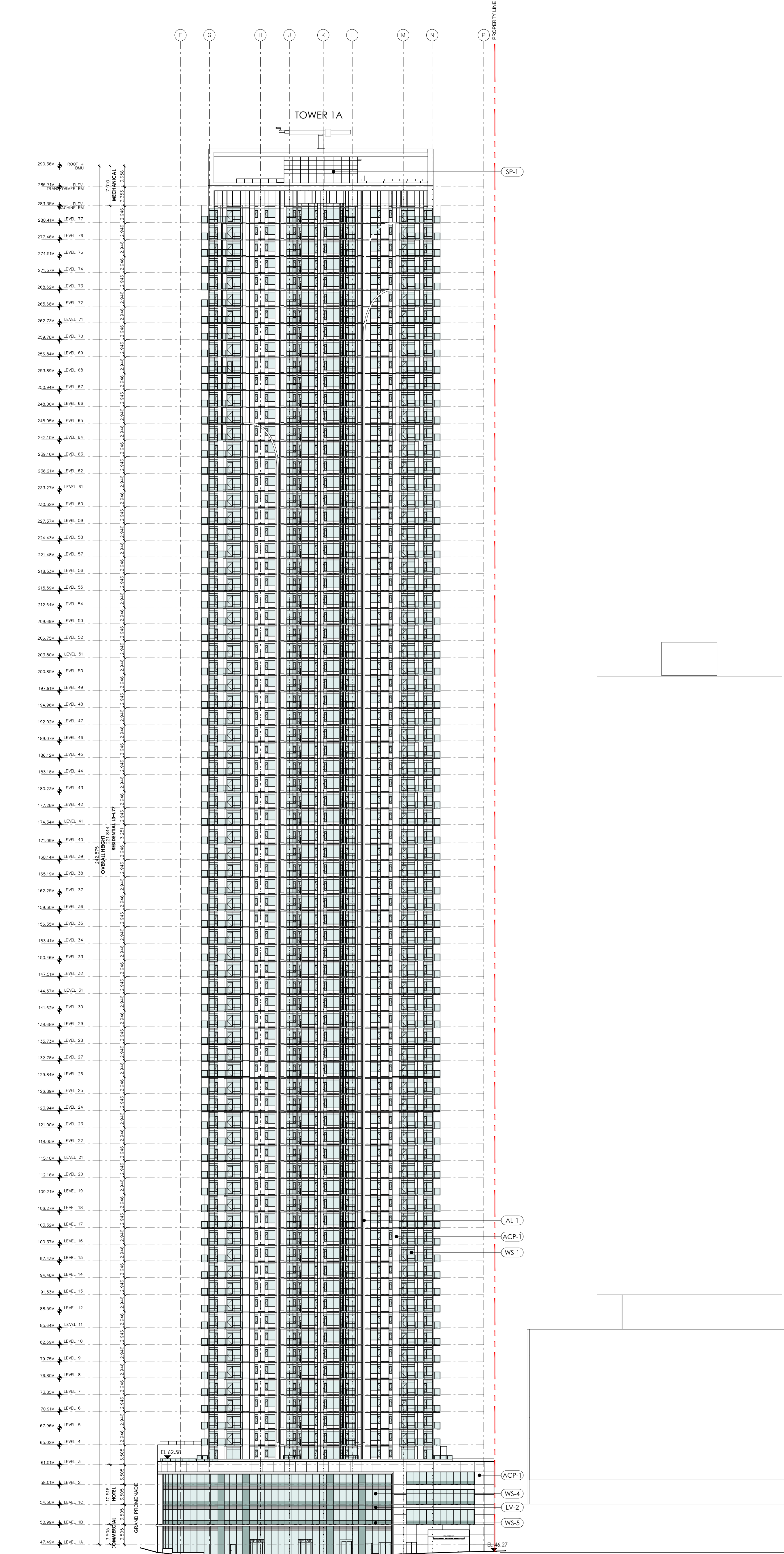
Notes:

MATERIAL LEGEND:

- WS-1** WINDOW WALL SYSTEM WITH ALUMINUM FRAME POWDERED-COATED WHITE TO MATCH ACP-1, GLASS HANDRAIL
- WS-2** WINDOW WALL SYSTEM WITH ALUMINUM FRAME POWDERED-COATED GREY TO MATCH ACP-3, GLASS HANDRAIL
- WS-3** DOUBLE-GLAZED CURTAIN WALL SYSTEM WITH SPANDREL PANELS
- WS-4** VISION GLASS STOREFRONT FACADE SYSTEM
- WS-5** WINDOW WALL SYSTEM WITH SPANDREL
- WS-6** WINDOW WALL SYSTEM WITH ACP-2 PANELS
- WS-7** WALL SYSTEM WITH SPANDREL PANELS

- ACP-1** ALUMINUM COMPOSITE PANEL - WHITE
- ACP-2** ALUMINUM COMPOSITE PANEL - ANODIZED BRONZE
- ACP-3** ALUMINUM COMPOSITE PANEL - GREY

- AL-1** ALUMINUM METAL PANEL FIN- WHITE
- LV-1** METAL LOUVER SYSTEM - WHITE
- LV-2** METAL LOUVER SYSTEM - GREY
- SP-1** STONE-TEXTURED PAINT
- SP-2** STONE TILE



Attachment #1 - Elevations

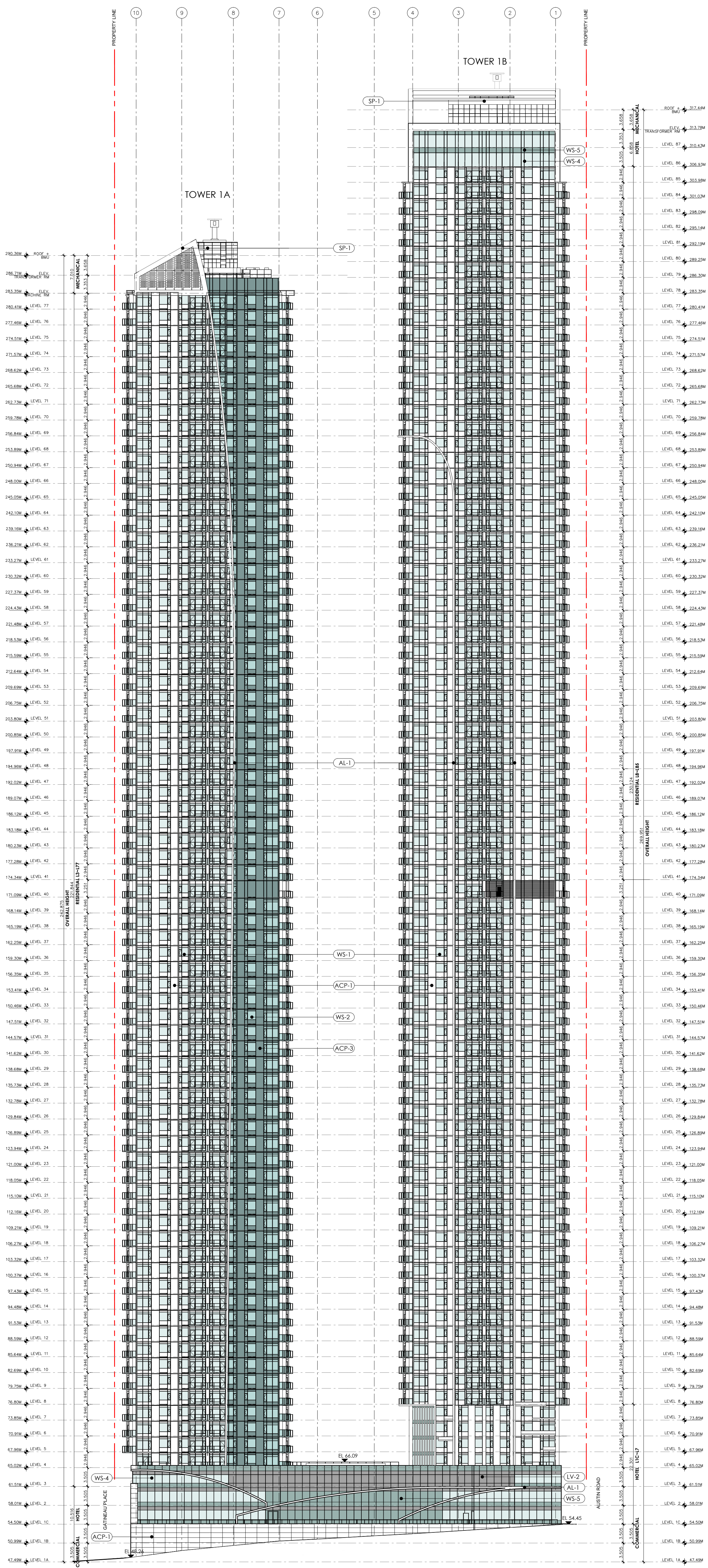
<p>CLIENT: PINNACLE INTERNATIONAL 1880 3111 Hornby St V6B 2M6</p>	<p>SITE: LOUGHED BURNABY BC</p>	<p>TITLE: PHASE 1-TOWER 1A SOUTH ELEVATION</p>	<p>SCALE: AT 24" X 36" 1/32"=1'-0" PROJECT NO: 18001.80 DRAWING NO: A5.12</p>	<p>DATE: 2026.01.12 DATE: 2026.01.12 DATE: 2026.01.12</p>	<p>REVISIONS:</p> <table border="1" style="width: 100%; border-collapse: collapse;"> <tr> <th>REV</th> <th>DESCRIPTION</th> <th>DATE</th> </tr> <tr> <td>3</td> <td>ISSUED FOR REZONING SUBMISSION</td> <td>2026.01.12</td> </tr> <tr> <td>2</td> <td>ISSUED FOR REZONING SUBMISSION</td> <td>2025.10.20</td> </tr> <tr> <td>1</td> <td>ISSUED FOR REZONING SUBMISSION</td> <td>2025.01.30</td> </tr> </table>	REV	DESCRIPTION	DATE	3	ISSUED FOR REZONING SUBMISSION	2026.01.12	2	ISSUED FOR REZONING SUBMISSION	2025.10.20	1	ISSUED FOR REZONING SUBMISSION	2025.01.30
REV	DESCRIPTION	DATE															
3	ISSUED FOR REZONING SUBMISSION	2026.01.12															
2	ISSUED FOR REZONING SUBMISSION	2025.10.20															
1	ISSUED FOR REZONING SUBMISSION	2025.01.30															
<p>CLIENT: PINNACLE INTERNATIONAL 1880 3111 Hornby St V6B 2M6</p>			<p>ARCHITECT: JYOM Architecture 3378 Cambie Street, Vancouver, BC V6H 2L2 604-876-2222 www.jyomarchitects.com</p>														
<p>NOTES:</p>																	

MATERIAL LEGEND:

- WS-1** WINDOW WALL SYSTEM WITH ALUMINUM FRAME POWDERED-COATED WHITE TO MATCH ACP-1, GLASS HANDRAIL
- WS-2** WINDOW WALL SYSTEM WITH ALUMINUM FRAME POWDERED-COATED GREY TO MATCH ACP-3, GLASS HANDRAIL
- WS-3** DOUBLE-GLAZED CURTAIN WALL SYSTEM WITH SPANDREL PANELS
- WS-4** VISION GLASS STOREFRONT FACADE SYSTEM
- WS-5** WINDOW WALL SYSTEM WITH SPANDREL
- WS-6** WINDOW WALL SYSTEM WITH ACP-2 PANELS
- WS-7** WALL SYSTEM WITH SPANDREL PANELS

- ACP-1** ALUMINUM COMPOSITE PANEL - WHITE
- ACP-2** ALUMINUM COMPOSITE PANEL - ANODIZED BRONZE
- ACP-3** ALUMINUM COMPOSITE PANEL - GREY

- AL-1** ALUMINUM METAL PANEL FIN- WHITE
- LV-1** METAL LOUVER SYSTEM - WHITE
- LV-2** METAL LOUVER SYSTEM - GREY
- SP-1** STONE-TEXTURED PAINT
- SP-2** STONE TILE



Attachment #1 - Elevations

REV	DESCRIPTION	DATE
3	ISSUED FOR REZONING SUBMISSION	2020.01.12
2	ISSUED FOR REZONING SUBMISSION	2020.02.20
1	ISSUED FOR REZONING SUBMISSION	2020.01.30

STUDIO: REZONING APPLICATION

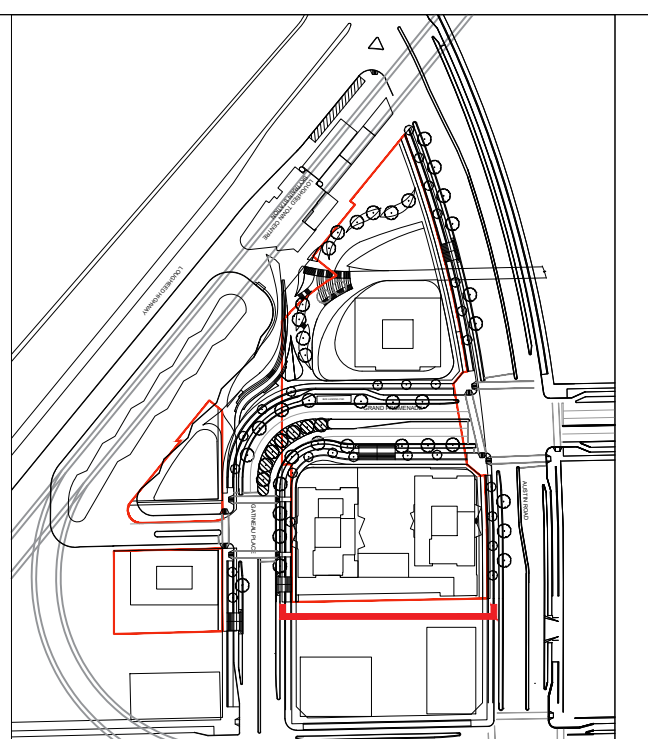
JYOM Architecture
 3378 Cambie Street,
 Vancouver, BC V6H 2L2
 604-876-2222
 www.jyomarchitects.com

CLIENT: PINNACLE INTERNATIONAL
 1830 3711 Renner St
 Vancouver, BC V6B 2M6
 V6B 2M6

SITE: LOUGHEED BURNABY BC

TITLE: PHASE 1 EAST ELEVATION

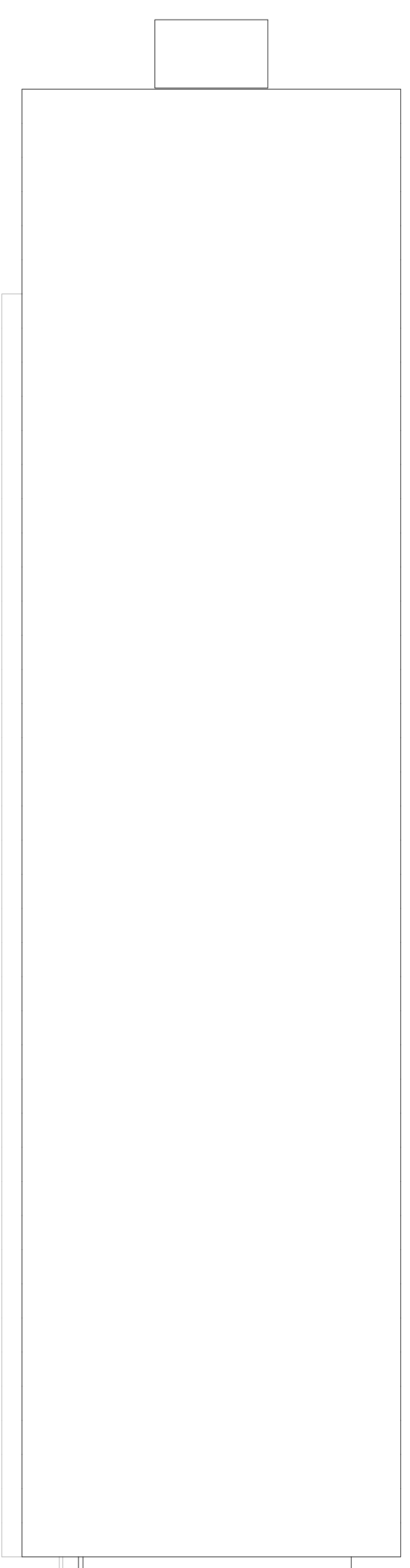
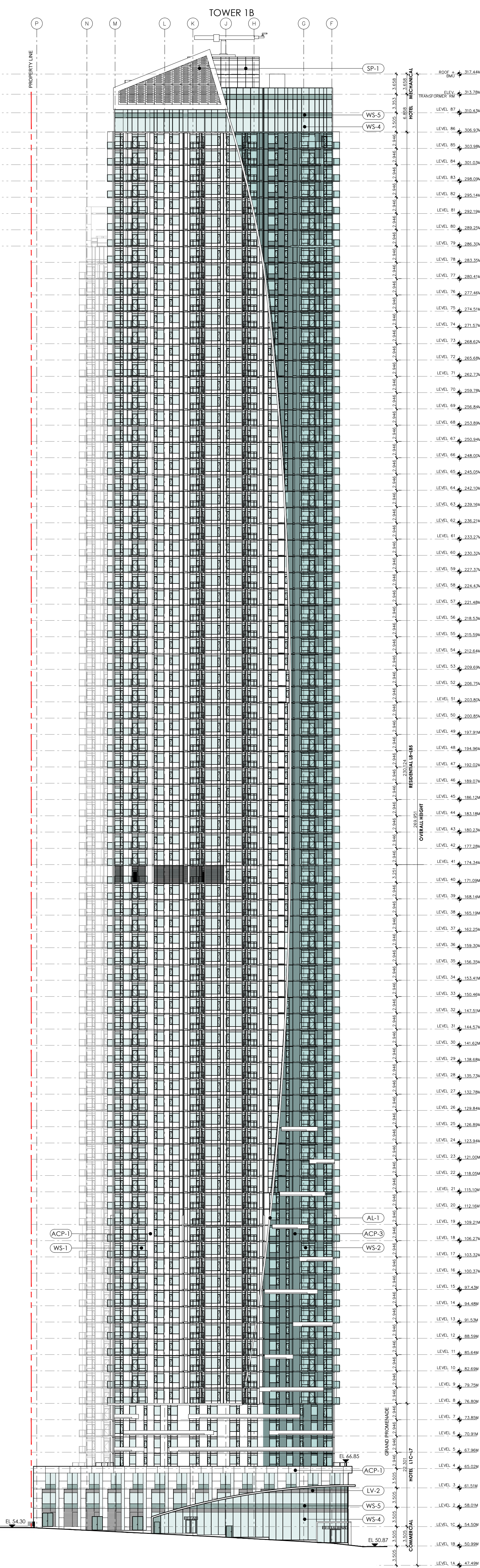
SCALE AT 2/3"=1'
 PROJECT NO: 18001.80
 DRAWING NO: A5.13
 DATE: 2020.01.12
 DRAWN: AL
 CHECKED: KK
 REVISION: 3



Notes:

MATERIAL LEGEND:

- WS-1** WINDOW WALL SYSTEM WITH ALUMINUM FRAME POWDERED-COATED WHITE TO MATCH ACP-1, GLASS HANDRAIL
- WS-2** WINDOW WALL SYSTEM WITH ALUMINUM FRAME POWDERED-COATED GREY TO MATCH ACP-3, GLASS HANDRAIL
- WS-3** DOUBLE-GLAZED CURTAIN WALL SYSTEM WITH SPANDREL PANELS
- WS-4** VISION GLASS STOREFRONT FACADE SYSTEM
- WS-5** WINDOW WALL SYSTEM WITH SPANDREL
- WS-6** WINDOW WALL SYSTEM WITH ACP-2 PANELS
- WS-7** WALL SYSTEM WITH SPANDREL PANELS
- ACP-1** ALUMINUM COMPOSITE PANEL - WHITE
- ACP-2** ALUMINUM COMPOSITE PANEL - ANODIZED BRONZE
- ACP-3** ALUMINUM COMPOSITE PANEL - GREY
- AL-1** ALUMINUM METAL PANEL FIN- WHITE
- LV-1** METAL LOUVER SYSTEM - WHITE
- LV-2** METAL LOUVER SYSTEM - GREY
- SP-1** STONE-TEXTURED PAINT
- SP-2** STONE TILE



Attachment #1 - Elevations

REV	DESCRIPTION	DATE
3	ISSUED FOR REZONING SUBMISSION	2026.01.12
2	ISSUED FOR REZONING SUBMISSION	2025.10.20
1	ISSUED FOR REZONING SUBMISSION	2025.01.30

STATUS: REZONING APPLICATION

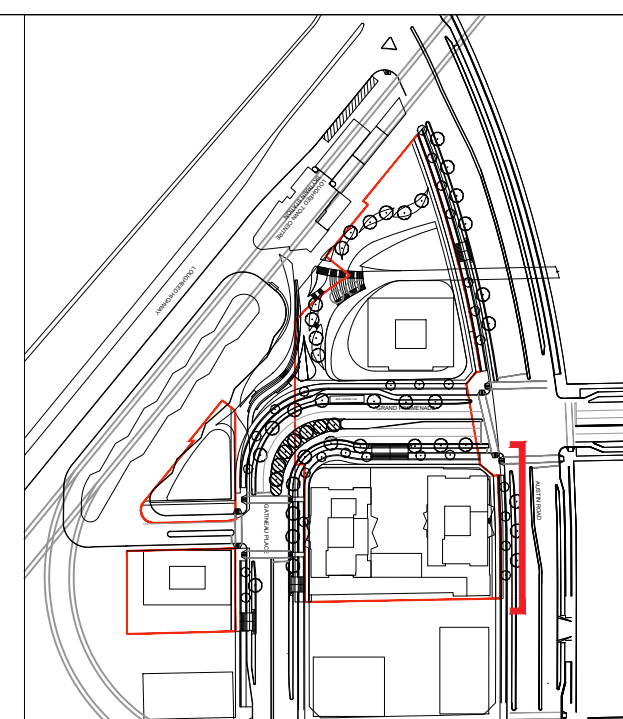
JYOM Architecture
 3378 Cambie Street,
 Vancouver, BC V6H 2L2
 604-876-2222
 www.jyomarchitects.com

CLIENT: PINNACLE INTERNATIONAL
 1800 3118 Haverly St
 Vancouver, BC
 V6B 2W6

SITE: LOUGHREED
 BURNABY BC

TITLE: PHASE 1-TOWER 1B
 NORTH ELEVATION

SCALE AT 2/3"=1'
 PROJECT NO: 18001.80
 DRAWING NO: A5.14
 DATE: 2026.01.12
 DRAWN: AL
 CHECKED: KK
 REVISION: 3



Notes: