

**MATERIAL LEGEND:**

<b>WS-1</b>	WINDOW WALL SYSTEM WITH ALUMINUM FRAME POWDERED-COATED WHITE TO MATCH ACP-1, GLASS HANDRAIL
<b>WS-2</b>	WINDOW WALL SYSTEM WITH ALUMINUM FRAME POWDERED-COATED GREY TO MATCH ACP-3, GLASS HANDRAIL
<b>WS-3</b>	DOUBLE-GLAZED CURTAIN WALL SYSTEM WITH SPANDREL PANELS
<b>WS-4</b>	VISION GLASS STOREFRONT FACADE SYSTEM
<b>WS-5</b>	WINDOW WALL SYSTEM WITH SPANDREL
<b>WS-6</b>	WINDOW WALL SYSTEM WITH ACP-2 PANELS
<b>WS-7</b>	WALL SYSTEM WITH SPANDREL PANELS
<b>ACP-1</b>	ALUMINUM COMPOSITE PANEL - WHITE
<b>ACP-2</b>	ALUMINUM COMPOSITE PANEL - ANODIZED BRONZE
<b>ACP-3</b>	ALUMINUM COMPOSITE PANEL - GREY
<b>AL-1</b>	ALUMINUM METAL PANEL FIN- WHITE
<b>LV-1</b>	METAL LOUVER SYSTEM - WHITE
<b>LV-2</b>	METAL LOUVER SYSTEM - GREY
<b>SP-1</b>	STONE-TEXTURED PAINT
<b>SP-2</b>	STONE TILE

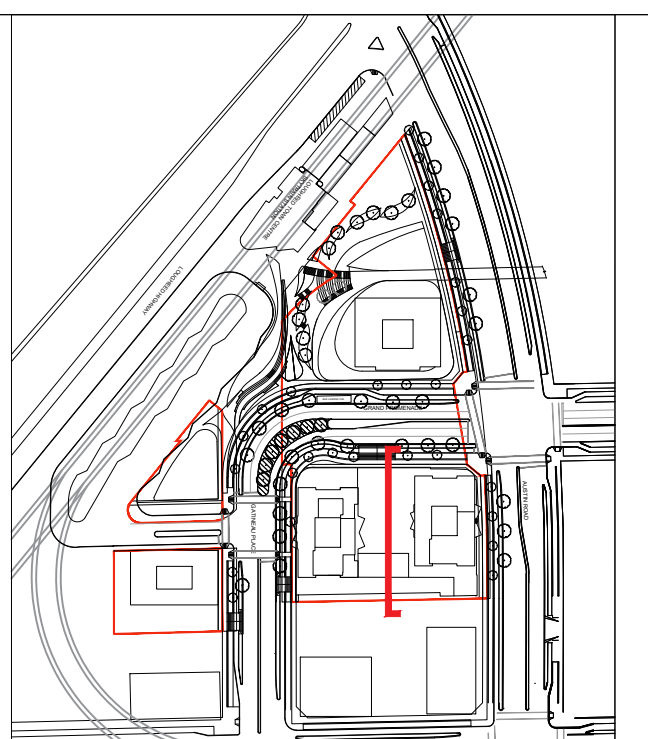
# Attachment #1 - Elevations

CLIENT:	PRINNAACLE INTERNATIONAL 1080 2711 HERRING ST VANCOUVER, BC V6B 2W6
SITE:	LOUGHHEAD BURNABY BC
TITLE:	PHASE 1-TOWER 1B SOUTH ELEVATION
SCALE:	AS.15
PROJECT NO.:	18001.80
DATE:	2026.01.12
DRAWING NO.:	AL
CHECKED:	KK
REVISION:	3

REV:	DESCRIPTION:	DATE:
3	ISSUED FOR REZONING SUBMISSION	2026.01.12
2	ISSUED FOR REZONING SUBMISSION	2025.10.20
1	ISSUED FOR REZONING SUBMISSION	2025.01.30

STATUS: REZONING APPLICATION

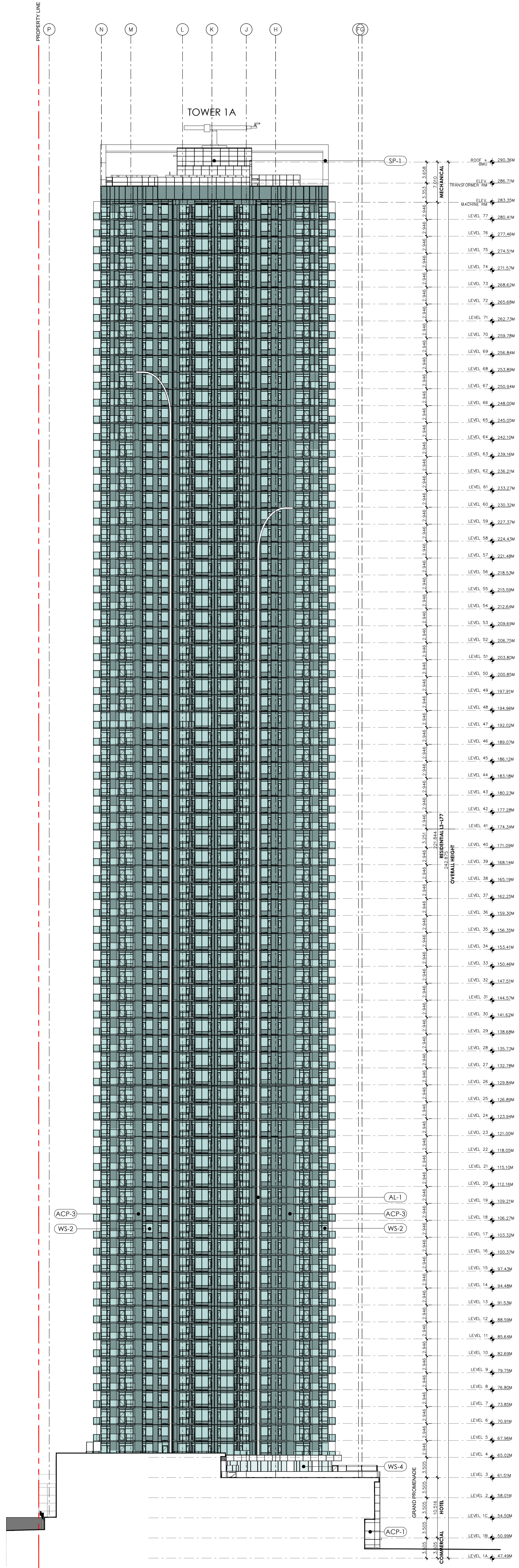
**JYOM** Architecture  
3378 Cambie Street,  
Vancouver, BC V6H 2L2  
604-876-2222  
www.jyomarchitects.com



Notes:

**MATERIAL LEGEND:**

- WS-1** WINDOW WALL SYSTEM WITH ALUMINUM FRAME POWDERED-COATED WHITE TO MATCH ACP-1, GLASS HANDRAIL
- WS-2** WINDOW WALL SYSTEM WITH ALUMINUM FRAME POWDERED-COATED GREY TO MATCH ACP-3, GLASS HANDRAIL
- WS-3** DOUBLE-GLAZED CURTAIN WALL SYSTEM WITH SPANDREL PANELS
- WS-4** VISION GLASS STOREFRONT FACADE SYSTEM
- WS-5** WINDOW WALL SYSTEM WITH SPANDREL
- WS-6** WINDOW WALL SYSTEM WITH ACP-2 PANELS WALL SYSTEM WITH SPANDREL PANELS
- ACP-1** ALUMINUM COMPOSITE PANEL - WHITE
- ACP-2** ALUMINUM COMPOSITE PANEL - ANODIZED BRONZE
- ACP-3** ALUMINUM COMPOSITE PANEL - GREY
- AL-1** ALUMINUM METAL PANEL FIN- WHITE
- LV-1** METAL LOUVER SYSTEM - WHITE
- LV-2** METAL LOUVER SYSTEM - GREY
- SP-1** STONE-TEXTURED PAINT
- SP-2** STONE TILE



# Attachment #1 - Elevations

REV	DESCRIPTION	DATE
3	ISSUED FOR REZONING SUBMISSION	2026.01.12
2	ISSUED FOR REZONING SUBMISSION	2025.10.20
1	ISSUED FOR REZONING SUBMISSION	2025.01.30

STATUS: REZONING APPLICATION

**JYOM**  
 JYOM Architecture  
 3378 Cambie Street,  
 Vancouver, BC V6H 2L2  
 604-876-2222  
 www.jyomarchitects.com

CLIENT: PINNACLE INTERNATIONAL  
 1880 9111 Renner St  
 Vancouver, BC  
 V6B 2M6

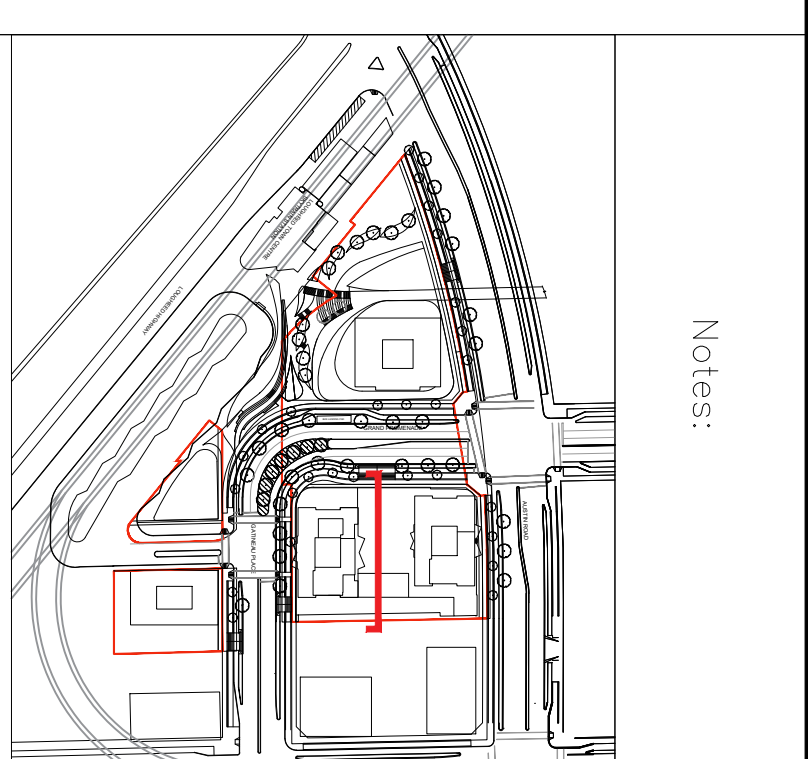
SITE: LOUGHNEED  
 BURNABY BC

TITLE: PHASE 1-TOWER 1A  
 NORTH ELEVATION

SCALE AT 24"X36"  
 1/32"=1'-0"

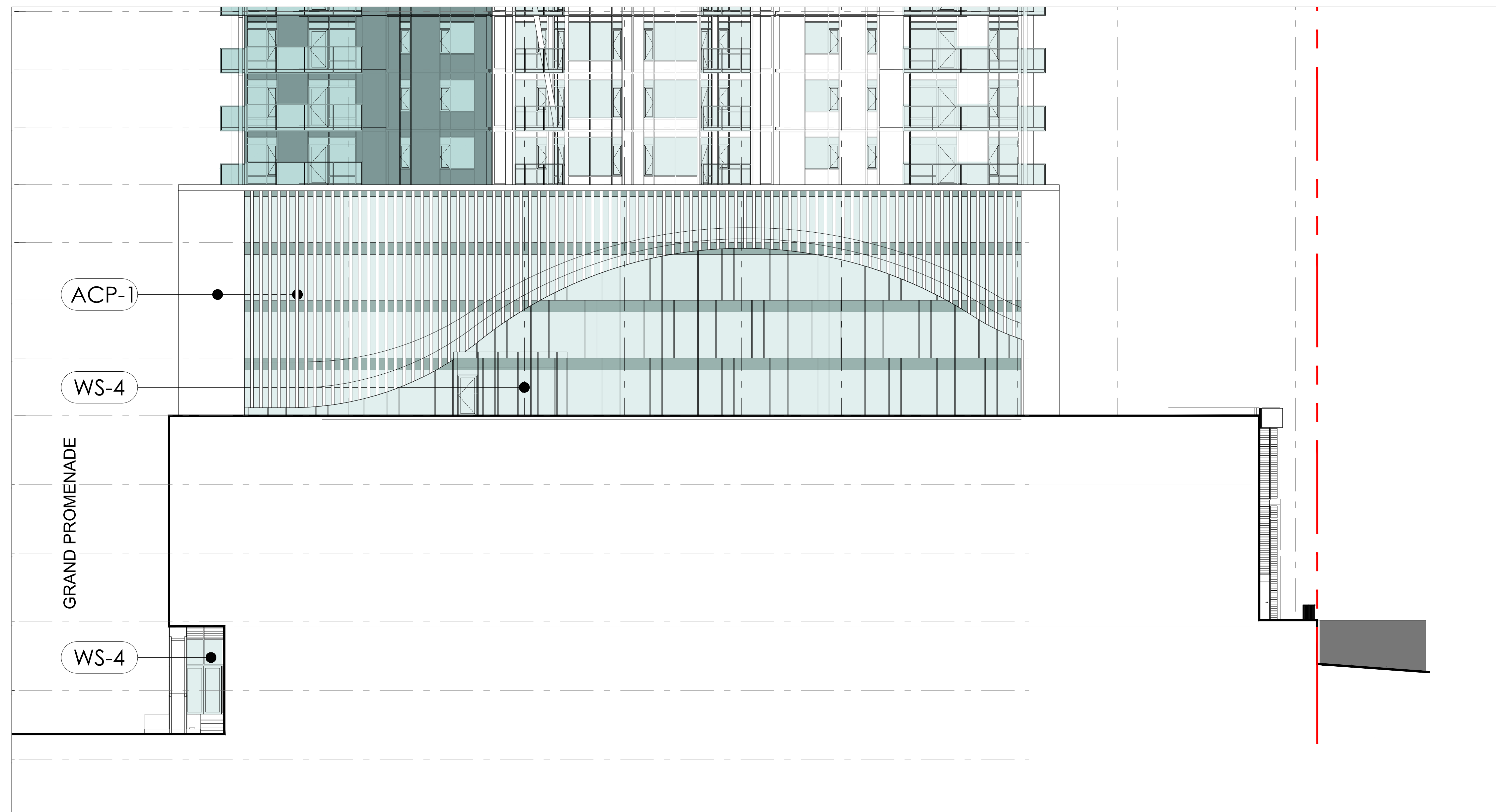
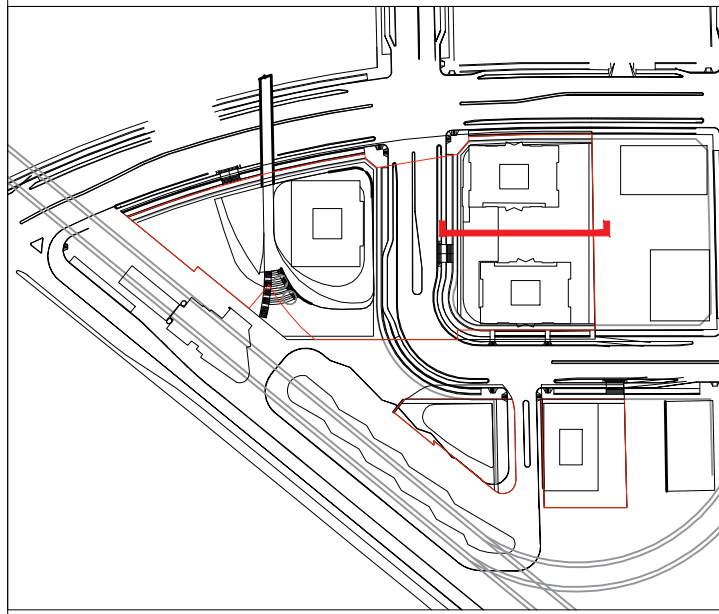
PROJECT NO.	DATE	DRAWN	CHECKED
18001.80	2026.01.12	AL	KK

REVISION: 3



Notes:

Notes:



REV	DESCRIPTION	DATE
3	ISSUED FOR REZONING SUBMISSION	2026.01.12
2	ISSUED FOR REZONING SUBMISSION	2025.10.20
1	ISSUED FOR REZONING SUBMISSION	2025.01.30

STATUS: REZONING APPLICATION

**JYOM** JYOM Architecture  
 3378 Cambie Street,  
 Vancouver, BC V6H 2L2  
 604-876-2222  
 www.JYOMarchitects.com

CLIENT: PINNACLE INTERNATIONAL  
 4300 - 911 Homer St  
 Vancouver, BC  
 V6B 2W6

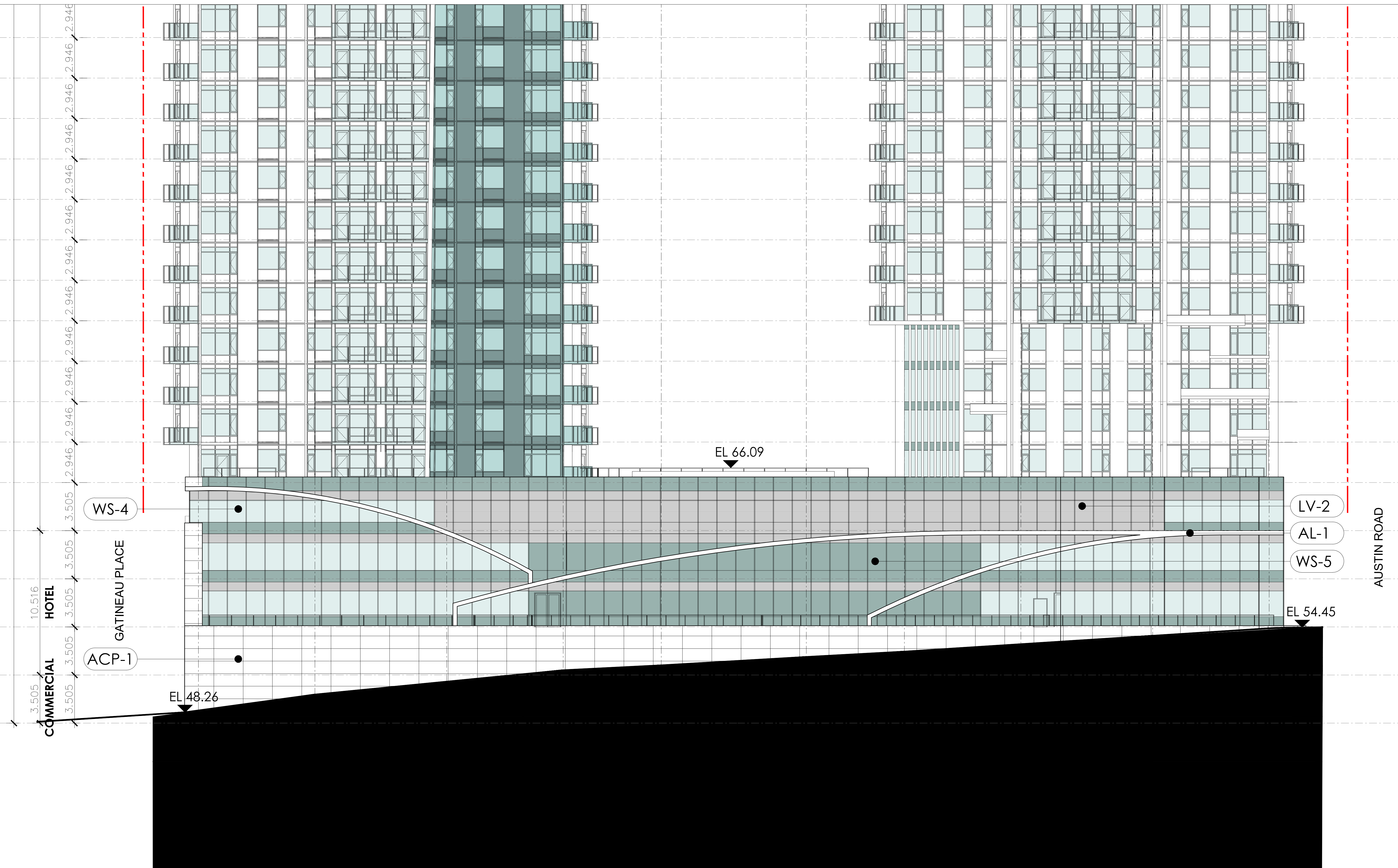
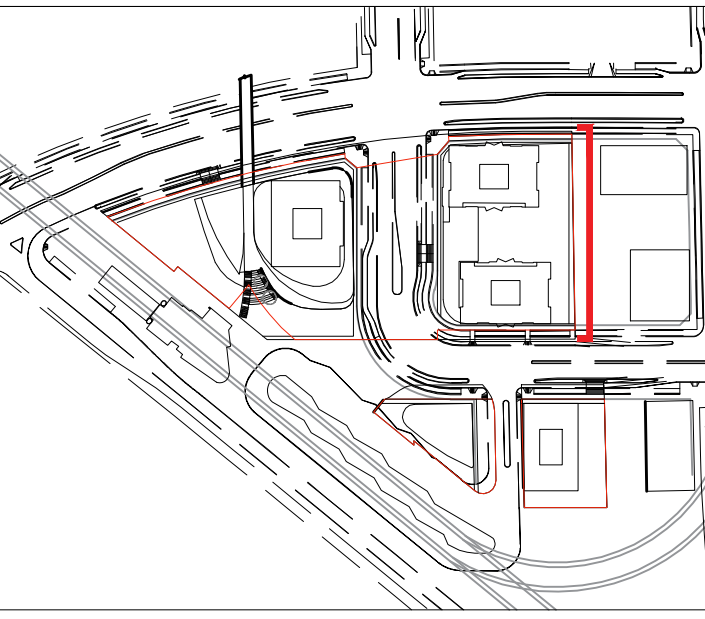
SITE: LOUGHEED  
 BURNABY BC

TITLE: PHASE 1-TOWER 1B  
 SOUTH ELEVATION

SCALE: AT 24"x36"	DATE:	DRAWN:	CHECKED:
	2026.01.12	AL	KK
PROJECT NO:	DRAWING NO:	REVISION:	
18001.80	A5.17	3	

# Attachment #1 - Elevations

Notes:



# Attachment #1 - Elevations

REV.	DESCRIPTION	DATE
3	ISSUED FOR REZONING SUBMISSION	2026.01.12
2	ISSUED FOR REZONING SUBMISSION	2025.10.20
1	ISSUED FOR REZONING SUBMISSION	2025.01.30

STATUS: REZONING APPLICATION

**JYOM** JYOM Architecture  
 3378 Cambie Street,  
 Vancouver, BC V6H 2L2  
 604-876-2222  
 www.JYOMarchitects.com

CLIENT: PINNACLE INTERNATIONAL  
 4300 - 911 Homer St  
 Vancouver, BC  
 V6B 2W6

SITE: LOUGHEED  
 BURNABY BC

TITLE: PHASE 1  
 EAST ELEVATION

SCALE AT 24"x36"	DATE	DRAWN	CHECKED
18001.80	2026.01.12	AL	KK
PROJECT NO:	DRAWING NO:	REVISION:	
18001.80	A5.18	3	